

DRAWING NUMBER  
Amended  
Zephyr Cove Property  
PLAN HOLD CORPORATION • IRVINE, CALIFORNIA  
REGISTERED PROFESSIONAL ARCHITECT

DRAWING NUMBER

DRAWING NUMBER

DRAWING NUMBER

State of Nevada } SS  
County of Ormsby }

I, E.H. Sweetland, do hereby certify that this map, as amended, is a true and accurate plat of the land surveyed by me and laid out into blocks, lots and streets at the instance of the Zephyr Cove Properties Inc.; that the location of the blocks, lots and streets, as amended, have been established in accordance with the law as shown hereon.

That the land subdivided lies wholly in the N $\frac{1}{2}$  of the S.W. $\frac{1}{4}$  of Sec. 10, T. 13 N., R. 18 E.

The survey was completed on May 9, 1929.

*E.H. Sweetland*

Subscribed and sworn to before me this 3<sup>rd</sup> day of August 1929.

*Dale Brunett*  
Notary Public.

My commission expires July 21<sup>st</sup> 1931.

AMENDED MAP  
OF  
ZEPHYR COVE PROPERTY  
IN  
Section 10, T. 13 N., R. 18 E.

OWNED BY ZEPHYR COVE PROPERTIES INC.  
Amended Survey By E.H. Sweetland.

Scale: 1" = 80 feet.

State of Nevada } SS  
County of Ormsby }

This is to certify that the ZEPHYR COVE PROPERTIES INC. is the owner of the piece of land represented on this map or plat, as amended, namely part of the S.W. $\frac{1}{4}$  of Section 10, T. 13 N., R. 18 E. and that the same is hereby executed in compliance with and under the provisions of "An Act authorizing owners of land to lay out and plat such land into blocks, lots, streets etc., and providing for approval and filing of maps and plats thereof," Approved March 3<sup>rd</sup> 1905 and Amended Feb. 24<sup>th</sup> 1921.

In Witness Whereof, the owner has caused its name to be hereto affixed, this 5<sup>th</sup> day of August 1929.

ZEPHYR COVE PROPERTIES INC.

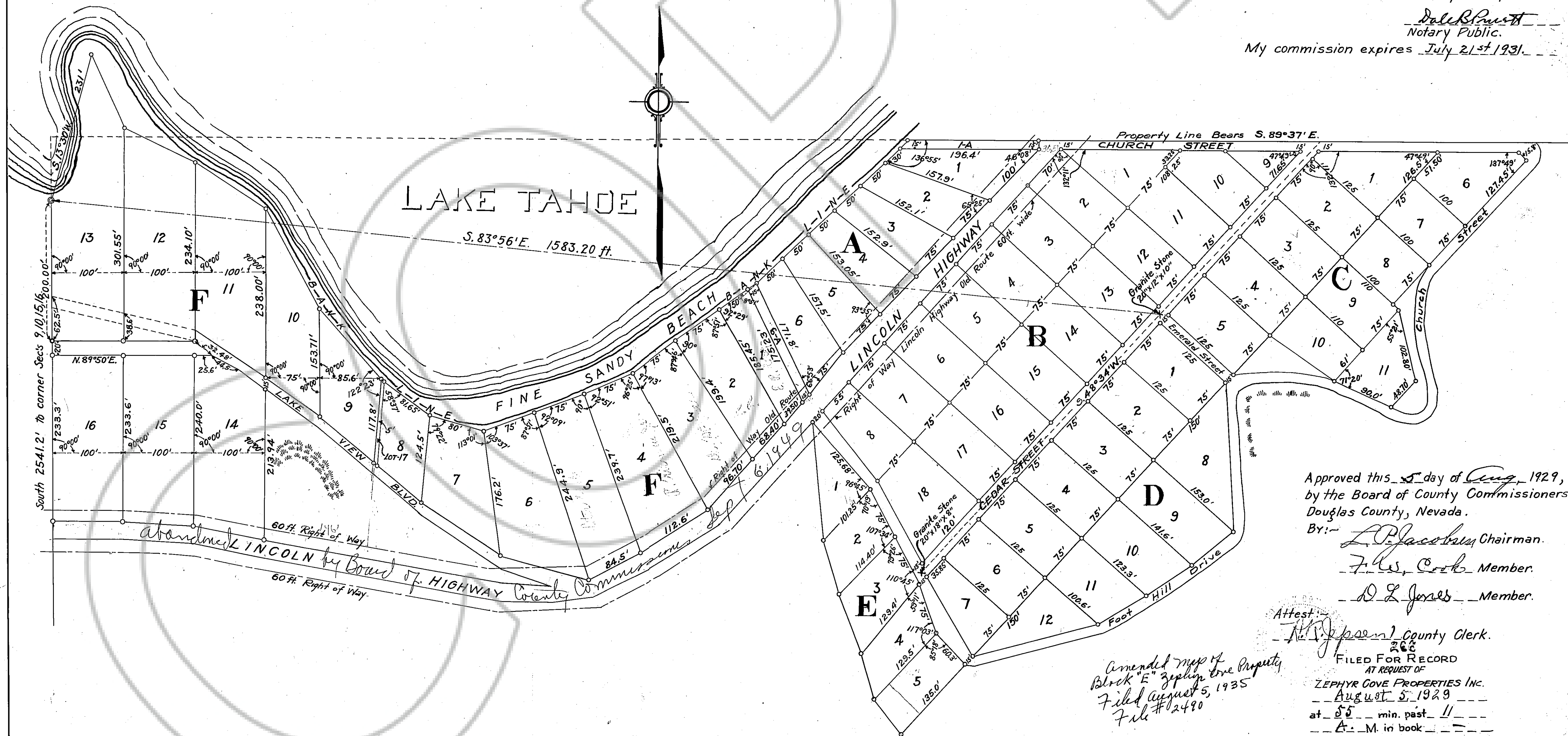
*Gustave S. Church*  
President

*J. L. Harvey*  
Secretary

Subscribed and sworn to before me this 5<sup>th</sup> day of August 1929.

*Dale Brunett*  
Notary Public.

My commission expires July 21<sup>st</sup> 1931.



Approved this 5<sup>th</sup> day of Aug. 1929,  
by the Board of County Commissioners  
Douglas County, Nevada.

By: *L. P. Jacobson* Chairman.

*F. W. Cook* Member.

*O. L. Jones* Member.

Attest:  
*H. J. Jensen* County Clerk.

FILED FOR RECORD  
AT REQUEST OF

ZEPHYR COVE PROPERTIES INC.

August 5, 1929

at 5<sup>55</sup> min. past 11

A.M. in book

of page

County Recorder  
Douglas County, Nevada

Amended Map of  
Block "E" Zephyr Cove Property  
Filed August 5, 1929  
File # 12420

DOCUMENT #000266

DRAWING NUMBER  
Amended  
Zephyr Cove Property

DRAWING NUMBER

DRAWING NUMBER

DRAWING NUMBER

State of Nevada }  
County of Ormsby } SS

I, E.H. Sweetland, do hereby certify that this map, as amended, is a true and accurate plat of the land surveyed by me and laid out into blocks, lots and streets at the instance of the Zephyr Cove Properties Inc.; that the location of the blocks, lots and streets, as amended, have been established in accordance with the law as shown hereon.

That the land subdivided lies wholly in the N $\frac{1}{2}$  of the S.W. $\frac{1}{4}$  of Sec. 10, T. 13 N., R. 18 E.  
The survey was completed on May 9, 1929.

*E.H. Sweetland*

Subscribed and sworn to before me this 3<sup>rd</sup> day of August 1929.

*Dale B. Ruess*  
Notary Public.

My commission expires July 21<sup>st</sup> 1931.

AMENDED MAP  
OF  
ZEPHYR COVE PROPERTY  
IN  
Section 10, T. 13 N., R. 18 E.

OWNED BY ZEPHYR COVE PROPERTIES INC.  
Amended Survey By E.H. Sweetland.  
Scale: ~ 1" = 80 feet.

State of Nevada }  
County of Ormsby } SS

This is to certify that the ZEPHYR COVE PROPERTIES INC. is the owner of the piece of land represented on this map or plat, as amended, namely part of the S.W. $\frac{1}{4}$  of Section 10, T. 13 N., R. 18 E. and that the same is hereby executed in compliance with and under the provisions of "An Act authorizing owners of land to lay out and plat such land into blocks, lots, streets etc., and providing for approval and filing of maps and plats thereof," Approved March 3<sup>rd</sup> 1905 and Amended Feb. 24<sup>th</sup> 1921.

In Witness Whereof, the owner has caused its name to be hereto affixed, this 5<sup>th</sup> day of August 1929.

ZEPHYR COVE PROPERTIES INC.

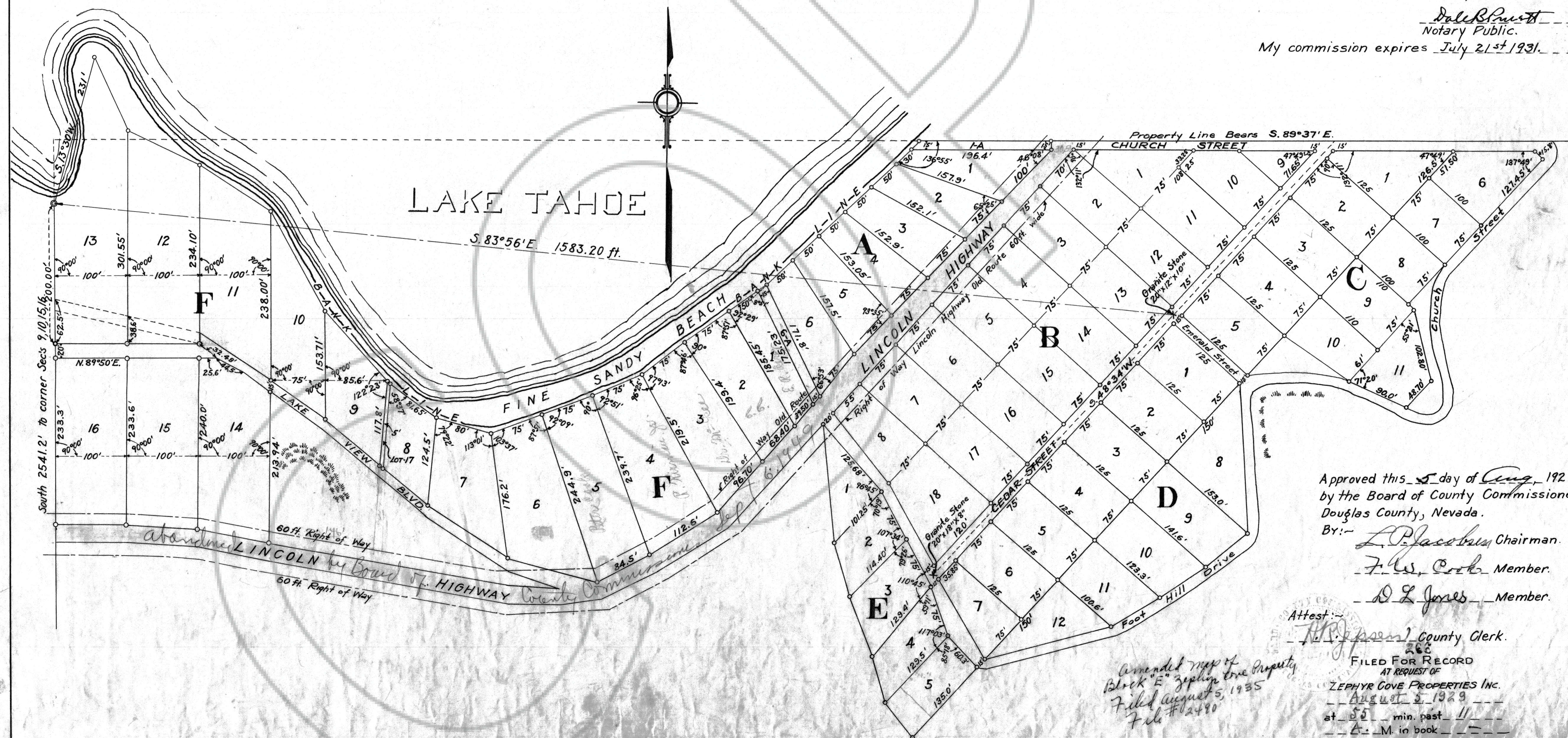
*Gustave S. Church*  
President

*J. L. Harvey*  
Secretary

Subscribed and sworn to before me this 5<sup>th</sup> day of August 1929.

*Dale B. Ruess*  
Notary Public.

My commission expires July 21<sup>st</sup> 1931.



Approved this 5<sup>th</sup> day of Aug, 1929,  
by the Board of County Commissioners  
Douglas County, Nevada.

By: *L. P. Placeman* Chairman.  
*F. W. Cook* Member.  
*D. L. Jones* Member.

Attest: *J. J. Jensen* County Clerk.

FILED FOR RECORD  
AT REQUEST OF  
ZEPHYR COVE PROPERTIES INC.  
August 5, 1929  
at 5<sup>22</sup> min past 11  
of 11 M. in book  
of \_\_\_\_\_ page \_\_\_\_\_

County Recorder  
Douglas County, Nevada.

Doc# 266

Amended map of  
Block 'E' Zephyr Cove Property  
Filed August 5, 1929  
File # 12490