

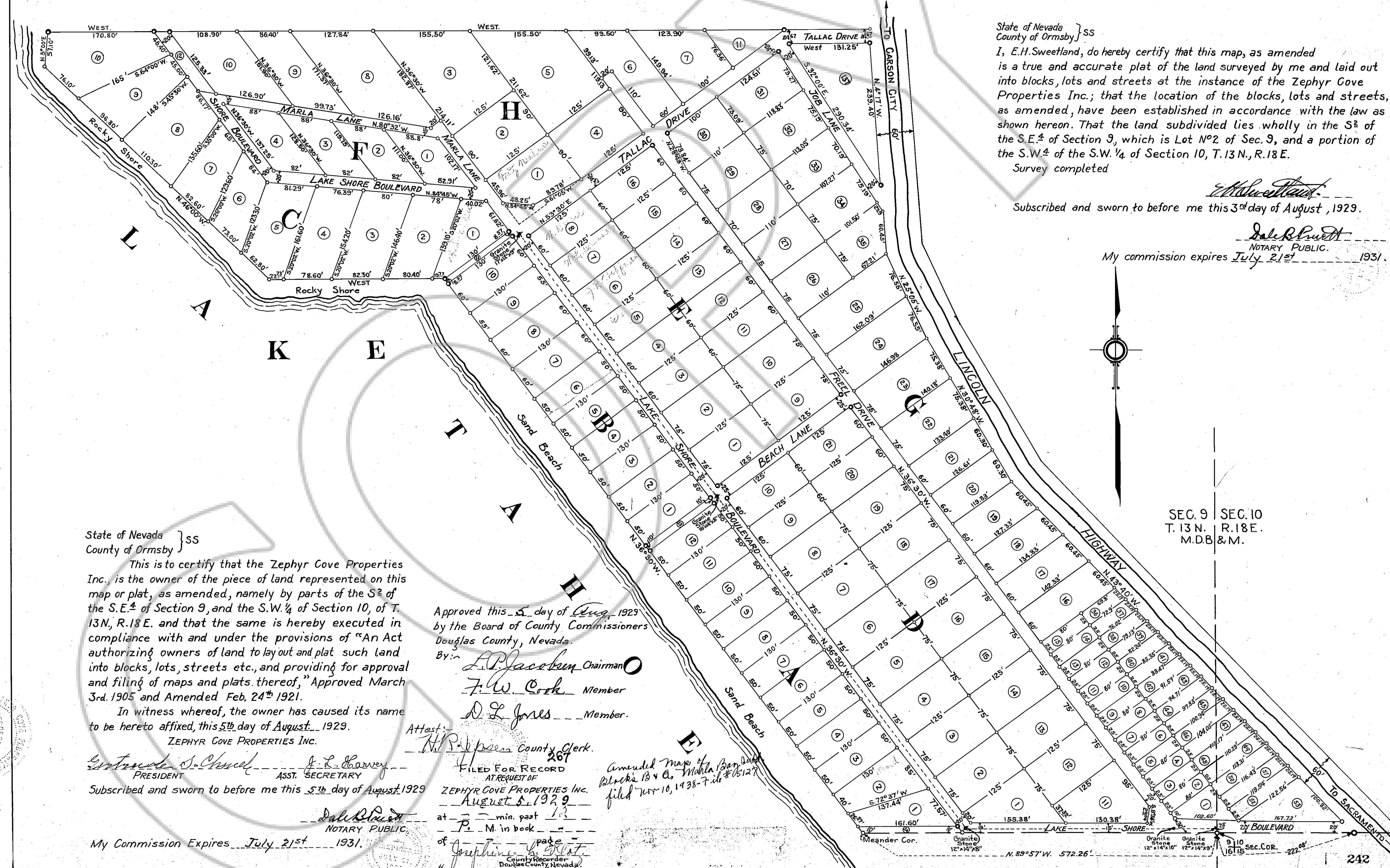
DRAWING NUMBER
Amended
Zephyr Cove Prop. No. 2
PLANNED BY ARCHITECT - IRVINE CALIFORNIA
DESIGNED BY ARCHITECT - IRVINE CALIFORNIA

DRAWING NUMBER
PLANNED BY ARCHITECT - IRVINE CALIFORNIA
DESIGNED BY ARCHITECT - IRVINE CALIFORNIA

DRAWING NUMBER
PLANNED BY ARCHITECT - IRVINE CALIFORNIA
DESIGNED BY ARCHITECT - IRVINE CALIFORNIA

DRAWING NUMBER
PLANNED BY ARCHITECT - IRVINE CALIFORNIA
DESIGNED BY ARCHITECT - IRVINE CALIFORNIA

AMENDED MAP
OF
SUBDIVISION No 2
OF
ZEPHYR COVE PROPERTIES INC.
IN
SECTIONS 9 AND 10-T.13 N.- R.18 E.
SCALE ~ 1 in. = 80 ft.
D.S.P. 129



State of Nevada } ss
County of Ormsby }
I, E.H. Sweetland, do hereby certify that this map, as amended is a true and accurate plat of the land surveyed by me and laid out into blocks, lots and streets at the instance of the Zephyr Cove Properties Inc.; that the location of the blocks, lots and streets, as amended, have been established in accordance with the law as shown hereon. That the land subdivided lies wholly in the S² of the S.E. ⁴ of Section 9, which is Lot No 2 of Sec. 9, and a portion of the S.W. ⁴ of the S.W. ⁴ of Section 10, T.13 N., R.18 E.
Survey completed

Subscribed and sworn to before me this 3rd day of August, 1929.
E.H. Sweetland
NOTARY PUBLIC.
My commission expires July 21st 1931.

State of Nevada } ss
County of Ormsby }
This is to certify that the Zephyr Cove Properties Inc. is the owner of the piece of land represented on this map or plat, as amended, namely by parts of the S² of the S.E. ⁴ of Section 9, and the S.W. ⁴ of Section 10, of T. 13 N., R. 18 E. and that the same is hereby executed in compliance with and under the provisions of "An Act authorizing owners of land to lay out and plat such land into blocks, lots, streets etc., and providing for approval and filing of maps and plats thereof," Approved March 3rd. 1905 and Amended Feb. 24th 1921.
In witness whereof, the owner has caused its name to be hereto affixed, this 5th day of August, 1929.
ZEPHYR COVE PROPERTIES INC.

Approved this 5th day of Aug. 1929
by the Board of County Commissioners
Douglas County, Nevada.
By: *L.P. Jacobsen* Chairman
F.W. Cook Member
D.L. Jones Member.

W. S. Church PRESIDENT
J. L. Harvey ASST. SECRETARY
Subscribed and sworn to before me this 5th day of August 1929
E.H. Sweetland
NOTARY PUBLIC.
My Commission Expires July 21st 1931.

Attest:
W.P. Jones County Clerk.
FILED FOR RECORD
AT REQUEST OF
ZEPHYR COVE PROPERTIES INC.
August 5, 1929
at _____ min. past _____
P. M. in book _____
of _____ page _____
County Recorder
Douglas County, Nevada.

Amended Map of Mohla Bend
Block 13 v O. Mohla Bend
filed Nov 10, 1938 - 7 il #16127

SEC. 9 SEC. 10
T. 13 N. R. 18 E.
M.D.B. & M.