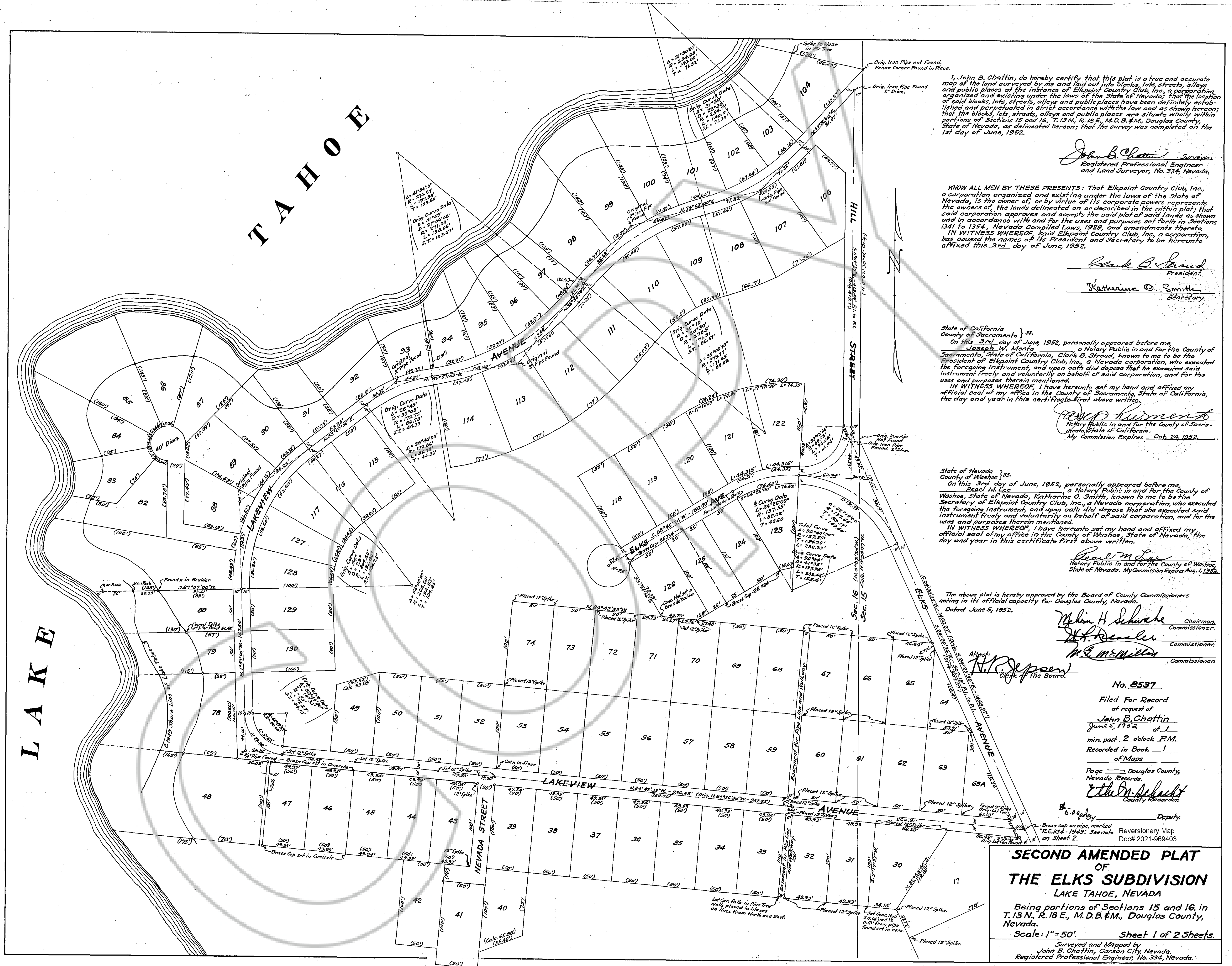


DRAWING NUMBER  
Elks  
2nd Amend. Sheet 1 of 2  
PLAN HOLD CORPORATION - IRVINE, CALIFORNIA

DRAWING NUMBER  
PLAN HOLD CORPORATION - IRVINE, CALIFORNIA

DRAWING NUMBER  
PLAN HOLD CORPORATION - IRVINE, CALIFORNIA

DRAWING NUMBER  
PLAN HOLD CORPORATION - IRVINE, CALIFORNIA



I, John B. Chattin, do hereby certify that this plat is a true and accurate map of the land surveyed by me and laid out into blocks, lots, streets, alleys and public places at the instance of Elkpoint Country Club, Inc., a corporation organized and existing under the laws of the State of Nevada; that the location of said blocks, lots, streets, alleys and public places have been definitely established and perpetuated in strict accordance with the law and as shown hereon; that the blocks, lots, streets, alleys and public places are situated wholly within portions of Sections 15 and 16, T. 13 N., R. 18 E., M.D.B. & M., Douglas County, State of Nevada, as delineated hereon; that the survey was completed on the 1st day of June, 1952.

*John B. Chattin* Surveyor  
Registered Professional Engineer  
and Land Surveyor, No. 334, Nevada.

KNOW ALL MEN BY THESE PRESENTS: That Elkpoint Country Club, Inc., a corporation organized and existing under the laws of the State of Nevada, is the owner of, or by virtue of its corporate powers represents the owners of, the lands delineated on or described in the within plat; that said corporation approves and accepts the said plat of said lands, as shown and in accordance with and for the uses and purposes set forth in Sections 1341 to 1354, Nevada Compiled Laws, 1929, and amendments thereto. IN WITNESS WHEREOF, said Elkpoint Country Club, Inc., a corporation, has caused the names of its President and Secretary to be hereunto affixed this 3rd day of June, 1952.

*Clark B. Stroud* President  
*Katherine O. Smith* Secretary

State of California } ss.  
County of Sacramento } ss.  
On this 3rd day of June, 1952, personally appeared before me, *Joseph W. Manta*, a Notary Public in and for the County of Sacramento, State of California, *Clark B. Stroud*, known to me to be the President of Elkpoint Country Club, Inc., a Nevada corporation, who executed the foregoing instrument, and upon oath did depose that she executed said instrument freely and voluntarily on behalf of said corporation, and for the uses and purposes therein mentioned. IN WITNESS WHEREOF, I have hereunto set my hand and affixed my official seal at my office in the County of Sacramento, State of California, the day and year in this certificate first above written.

*Joseph W. Manta*  
Notary Public in and for the County of Sacramento, State of California.  
My Commission Expires Oct. 24, 1952.

State of Nevada } ss.  
County of Washoe } ss.  
On this 3rd day of June, 1952, personally appeared before me, *Pearl M. Lee*, a Notary Public in and for the County of Washoe, State of Nevada, *Katherine O. Smith*, known to me to be the Secretary of Elkpoint Country Club, Inc., a Nevada corporation, who executed the foregoing instrument, and upon oath did depose that she executed said instrument freely and voluntarily on behalf of said corporation, and for the uses and purposes therein mentioned. IN WITNESS WHEREOF, I have hereunto set my hand and affixed my official seal at my office in the County of Washoe, State of Nevada, the day and year in this certificate first above written.

*Pearl M. Lee*  
Notary Public in and for the County of Washoe, State of Nevada. My Commission Expires Aug. 1, 1953.

The above plat is hereby approved by the Board of County Commissioners acting in its official capacity for Douglas County, Nevada.  
Dated June 5, 1952.

*Malvin H. Schwabe* Chairman, Commissioner.  
*H. J. Denales* Commissioner.  
*R. E. McMillan* Commissioner.

Attest:  
*H. J. Jensen*  
Clerk of the Board.

No. 8537  
Filed For Record  
at request of  
*John B. Chattin*  
June 5, 1952  
of 1  
min. past 2 o'clock P.M.  
Recorded in Book 1  
of Maps  
Page \_\_\_\_\_ Douglas County,  
Nevada Records.  
*E. M. Schacht*  
County Recorder.  
5.00 p.p. by \_\_\_\_\_ Deputy.  
Reversionary Map  
Doc# 2021-969403

**SECOND AMENDED PLAT  
OF  
THE ELKS SUBDIVISION  
LAKE TAHOE, NEVADA**  
Being portions of Sections 15 and 16, in  
T. 13 N., R. 18 E., M.D.B. & M., Douglas County,  
Nevada.  
Scale: 1" = 50'. Sheet 1 of 2 Sheets.  
Surveyed and Mapped by  
*John B. Chattin*, Carson City, Nevada,  
Registered Professional Engineer, No. 334, Nevada.

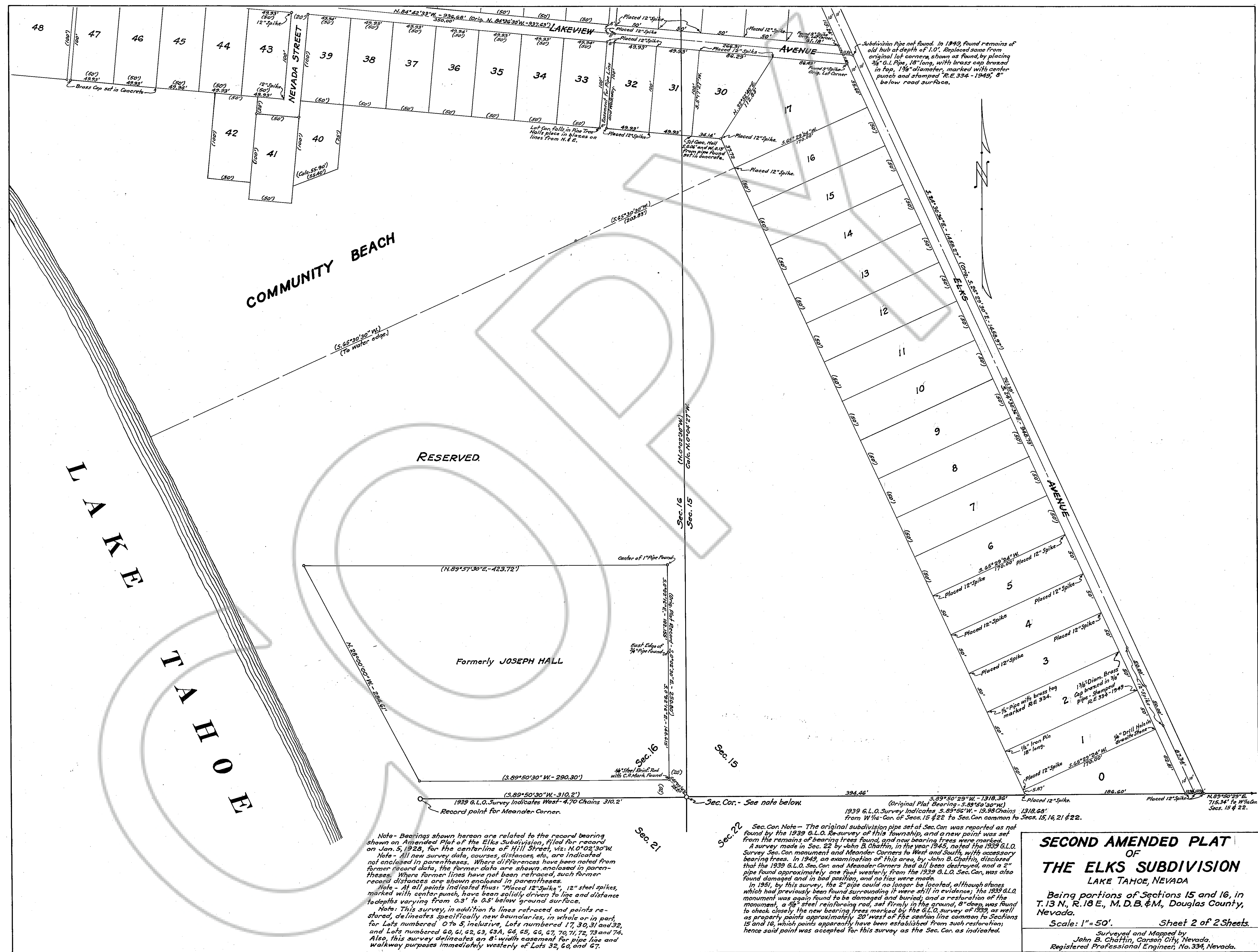


DRAWING NUMBER  
Elks  
2nd Amd. Sheet 2 of 2  
PLAN HOLD CORPORATION • IRVINE, CALIFORNIA

DRAWING NUMBER  
PLAN HOLD CORPORATION • IRVINE, CALIFORNIA

DRAWING NUMBER  
PLAN HOLD CORPORATION • IRVINE, CALIFORNIA

DRAWING NUMBER  
PLAN HOLD CORPORATION • IRVINE, CALIFORNIA



Note - Bearings shown hereon are related to the record bearing shown on Amended Plat of the Elks Subdivision, filed for record on Jan. 5, 1928, for the centerline of Hill Street, viz. N. 0° 02' 30" W.  
Note - All new survey data, courses, distances, etc., are indicated not enclosed in parentheses. Where differences have been noted from former record data, the former data are shown enclosed in parentheses. Where former lines have not been retraced, such former record distances are shown enclosed in parentheses.  
Note - At all points indicated thus: "Placed 12" Spike", 12" steel spikes, marked with center punch, have been solidly driven to line and distance to depths varying from 0.3' to 0.5' below ground surface.  
Note - This survey, in addition to lines retraced and points restored, delineates specifically new boundaries, in whole or in part, for Lots numbered 0 to 5, inclusive. Lots numbered 17, 30, 31 and 32, and Lots numbered 60, 61, 62, 63, 64, 65, 66, 67, 70, 71, 72, 73 and 74. Also, this survey delineates an 8' width easement for pipe line and walkway purposes immediately westerly of Lots 32, 60, and 67.

Sec. Cor. Note - The original subdivision pipe set at Sec. Cor. was reported as not found by the 1939 G.L.O. Re-survey of this Township, and a new point was set from the remains of bearing trees found, and new bearing trees were marked.  
A survey made in Sec. 22 by John B. Chaffin, in the year 1945, noted the 1939 G.L.O. Survey Sec. Cor. monument and Meander Corners to West and South, with accessory bearing trees. In 1949, an examination of this area, by John B. Chaffin, disclosed that the 1939 G.L.O. Sec. Cor. and Meander Corners had all been destroyed, and a 2" pipe found approximately one foot westerly from the 1939 G.L.O. Sec. Cor., was also found damaged and in bad position, and no ties were made.  
In 1951, by this survey, the 2" pipe could no longer be located, although stones which had previously been found surrounding it were still in evidence. The 1939 G.L.O. monument was again found to be damaged and buried; and a restoration of the monument, a 5/8" steel reinforcing rod, set firmly in the ground, 8" deep, was found to check closely the new bearing trees marked by the G.L.O. survey of 1939, as well as property points approximately 20' west of the section line common to Sections 15 and 16, which points apparently have been established from such restorations; hence said point was accepted for this survey as the Sec. Cor. as indicated.

**SECOND AMENDED PLAT**  
OF  
**THE ELKS SUBDIVISION**  
LAKE TAHOE, NEVADA  
Being portions of Sections 15 and 16, in T. 13 N., R. 18 E., M. D. B. & M., Douglas County, Nevada.  
Scale: 1" = 50'. Sheet 2 of 2 Sheets.  
Surveyed and Mapped by  
John B. Chaffin, Carson City, Nevada.  
Registered Professional Engineer, No. 334, Nevada.