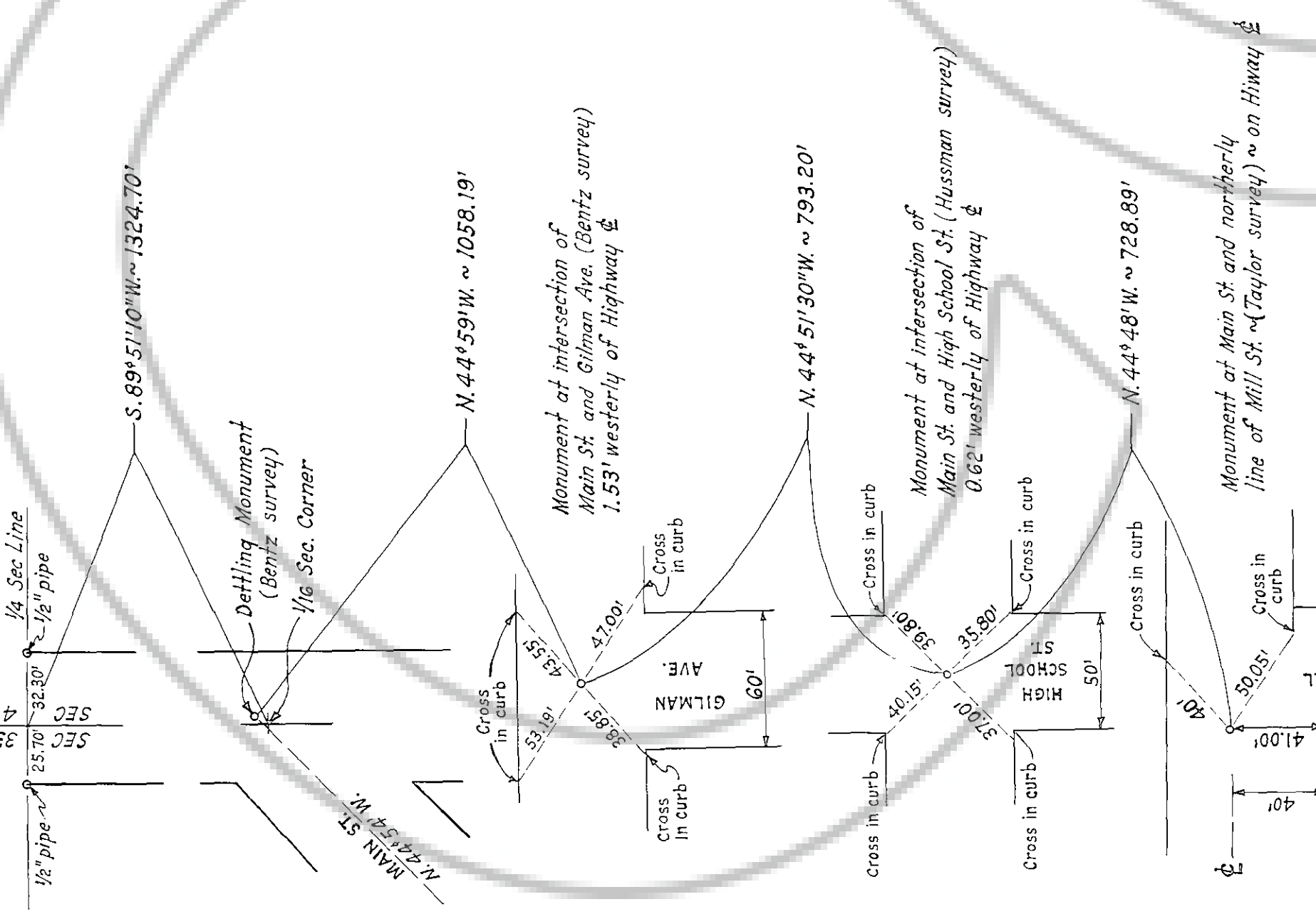


Reference points set for Town Monuments



I hereby certify that this map correctly represents the location by metes and bounds of the revised town limits for the town of Gardnerville and was prepared from surveys made by me and also from property records on file in the Douglas County Court House in Minden.

*E. L. Newman*  
 Licensed Professional Surveyor

Approved and accepted this 5<sup>th</sup> day of July, 1954, by the Board of the County Commissioners of Douglas County, Nevada.

*M. E. Williams* Chairman  
*M. S. Lee* Member  
*Martin Schelmeier* Member

The alignment of Main Street as fixed by the Nevada Highway Department in 1938 varies from that of the original town survey.

Town limits are marked thus: ---  
 Bearings and distances for Town Monuments are described and referenced in. With the exception of the Maneley Addition and the Glock-Lampe Subdivision the bearings and the distances of the town boundaries are approximate only.

MAP  
 OF  
 GARDNERVILLE NEVADA  
 AND LOCATION OF TOWN  
 MONUMENTS

*E. L. Newman*  
 August 5, 1954, 5.5  
 Maps  
*Elmer Schult*

No fee

SCALE: 1" = 200'

DOCUMENT #009768

*E. L. Newman*  
 August 5, 1954

Gardnerville  
 Revised

DRAWING NUMBER

DRAWING NUMBER

DRAWING NUMBER