

DRAWING NUMBER
Lake Ridge Estates
#1

PLAN HOLD CORPORATION • IRVINE, CALIFORNIA
REPRODUCED BY NUMBER 012188

DRAWING NUMBER

PLAN HOLD CORPORATION • IRVINE, CALIFORNIA
REPRODUCED BY NUMBER 012188

DRAWING NUMBER

PLAN HOLD CORPORATION • IRVINE, CALIFORNIA
REPRODUCED BY NUMBER 012188

DRAWING NUMBER

PLAN HOLD CORPORATION • IRVINE, CALIFORNIA
REPRODUCED BY NUMBER 012188

I Robert H Barrett hereby certify that I am a registered professional engineer and land surveyor in and for the State of Nevada; and that this map of LAKE RIDGE ESTATES - consisting of one sheet correctly represents a survey made by me April 1957, that the monuments shown hereon actually exist and their positions on this map are correctly shown

Robert H Barrett
R.E. No. 288

This is to certify that the undersigned - PAUL W. DIGGLE and GENE EMPEY are the owners of the tract of land represented on this map or plat and the same is hereby executed in compliance with and subject to the provisions as set forth in sections 1341-1354 of Nevada Compiled Laws, 1929 and subsequent amendments thereto

Paul W Diggle
Gene Empey

LAKE RIDGE ESTATES NO. 1.

DOUGLAS COUNTY NEVADA

Found
Found
Found

STATE OF NEVADA
COUNTY OF DOUGLAS } S.S.

On this 6th day of May 1957 before me a notary public in and for said county, personally appeared before me, Paul W. Diggle and Gene Empey, known to me to be the persons that executed the foregoing instrument and acknowledged to me that they executed the same

Ernest L. Vick

Notary public in and for Douglas County, State of Nevada
My commission expires: April 2, 1958

Approved and accepted this 6th day of May 1957 by the Board of County Commissioners of Douglas County subject to the stipulation that by adopting the same, hereby assume no responsibility for the public ways shown hereon. The County Commissioners however reserve the right to accept the streets as shown hereon at any future date
Chairman Marion Dittmer Member Donald T. Hall

Attested: Earlbert W. Swan
County Clerk

Reviewed, approved and recommended to the Board of County Commissioners of Douglas County, by the Douglas County Planning Commission on this 1st day of May 1957

Robert A. Kuehn
Chairman

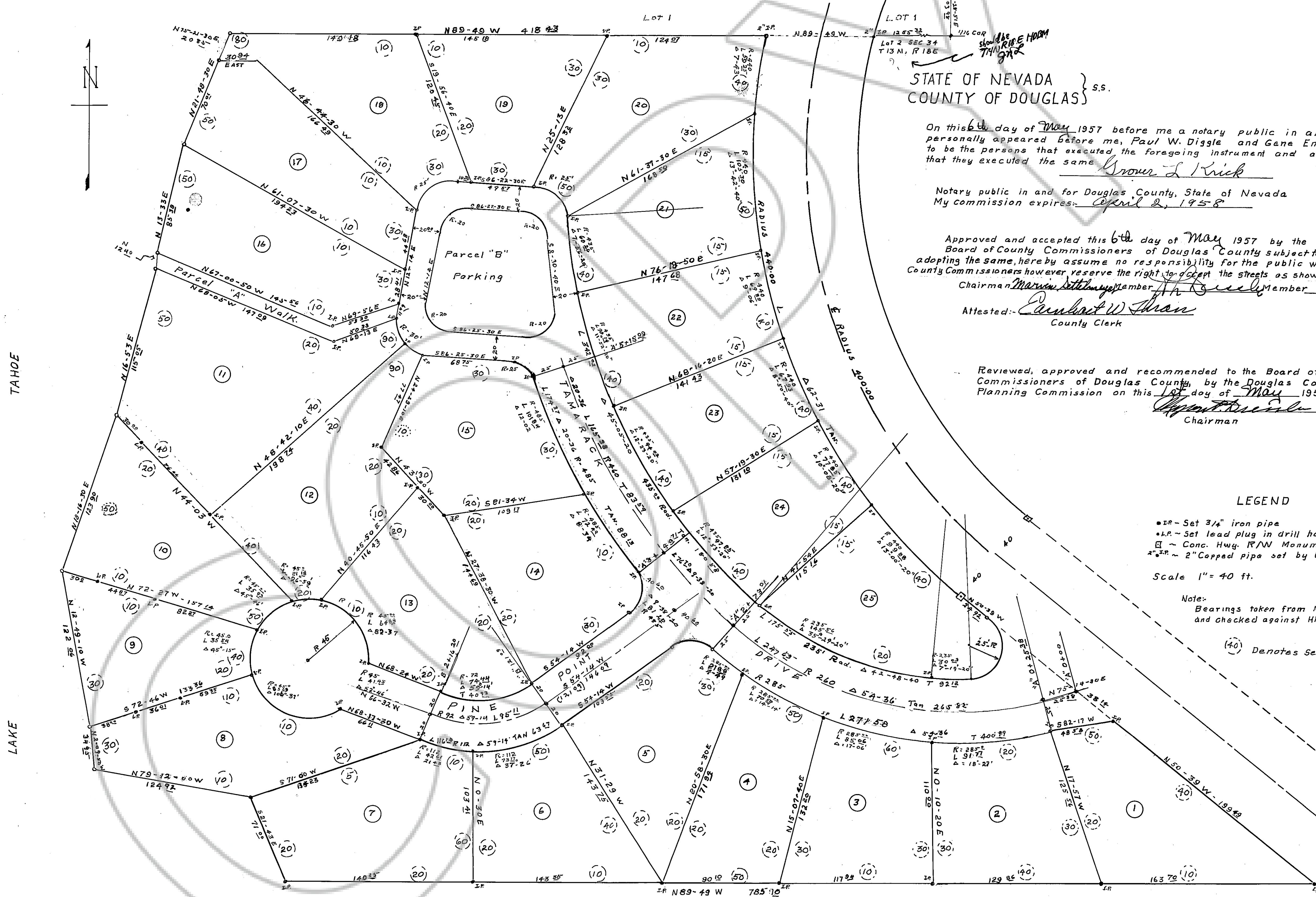
LEGEND

- IR - Set 3/4" iron pipe
- L.P. - Set lead plug in drill hole
- - Conc. Hwy. R/W Monument
- IR - 2" Copped pipe set by U.S. Bureau Public roads

Scale 1" = 40 ft.

Note:
Bearings taken from North line of Sec. 34 and checked against Highway bearing.

(40) Denotes Set back distance



Paul W. Diggle
May 7, 1957 20
9 A

Mayer

Earlbert W. Swan

Lake Ridge Estates No. 1
Revised Plat
filed February 23, 1959
in Book 1, Maps
File # 14083

Earlbert W. Swan
County Recorder

DOCUMENT #012188