

DRAWING NUMBER
Cont To North Lakeridge Sub.
Lake Ridge Estates # 2
PLAN HOLD CORPORATION • IRVINE, CALIFORNIA
REGISTERED BY NUMBER OTHER

DRAWING NUMBER
PLAN HOLD CORPORATION • IRVINE, CALIFORNIA
REGISTERED BY NUMBER OTHER

DRAWING NUMBER
PLAN HOLD CORPORATION • IRVINE, CALIFORNIA
REGISTERED BY NUMBER OTHER

DRAWING NUMBER
PLAN HOLD CORPORATION • IRVINE, CALIFORNIA
REGISTERED BY NUMBER OTHER

STATE OF NEVADA } S.S.
COUNTY OF DOUGLAS }

I, Robert H. Barrett hereby certify that I am a registered Professional engineer and land surveyor in and for the State of Nevada; and that this map of LAKE RIDGE ESTATES No 2 consisting of one sheet, correctly represents a survey made by me May 1957, that the monuments shown hereon actually exist and their positions on this map are correctly shown

Robert H Barrett
R.E. No. 288

On this 5th day of June 1957, before me, a notary public in and for said County, personally appeared before me, PAUL W. DIGGLE and GENE EMPEY, known to me to be the persons that executed the foregoing instrument and acknowledged to me that they executed the same

Notary public in and for Douglas County, State of Nevada
My Commission expires April 2, 1958

LAKERIDGE ESTATES NO. 2

DOUGLAS COUNTY, NEVADA

This is to certify that the undersigned - PAUL W. DIGGLE and GENE EMPEY are the owners of the tract of land represented on this map or plat and the same is hereby executed in compliance with and subject to the provisions as set forth in sections 1341-1354 of Nevada Compiled Laws 1929 and subsequent amendments thereto

Paul W. Diggle
Gene Empey

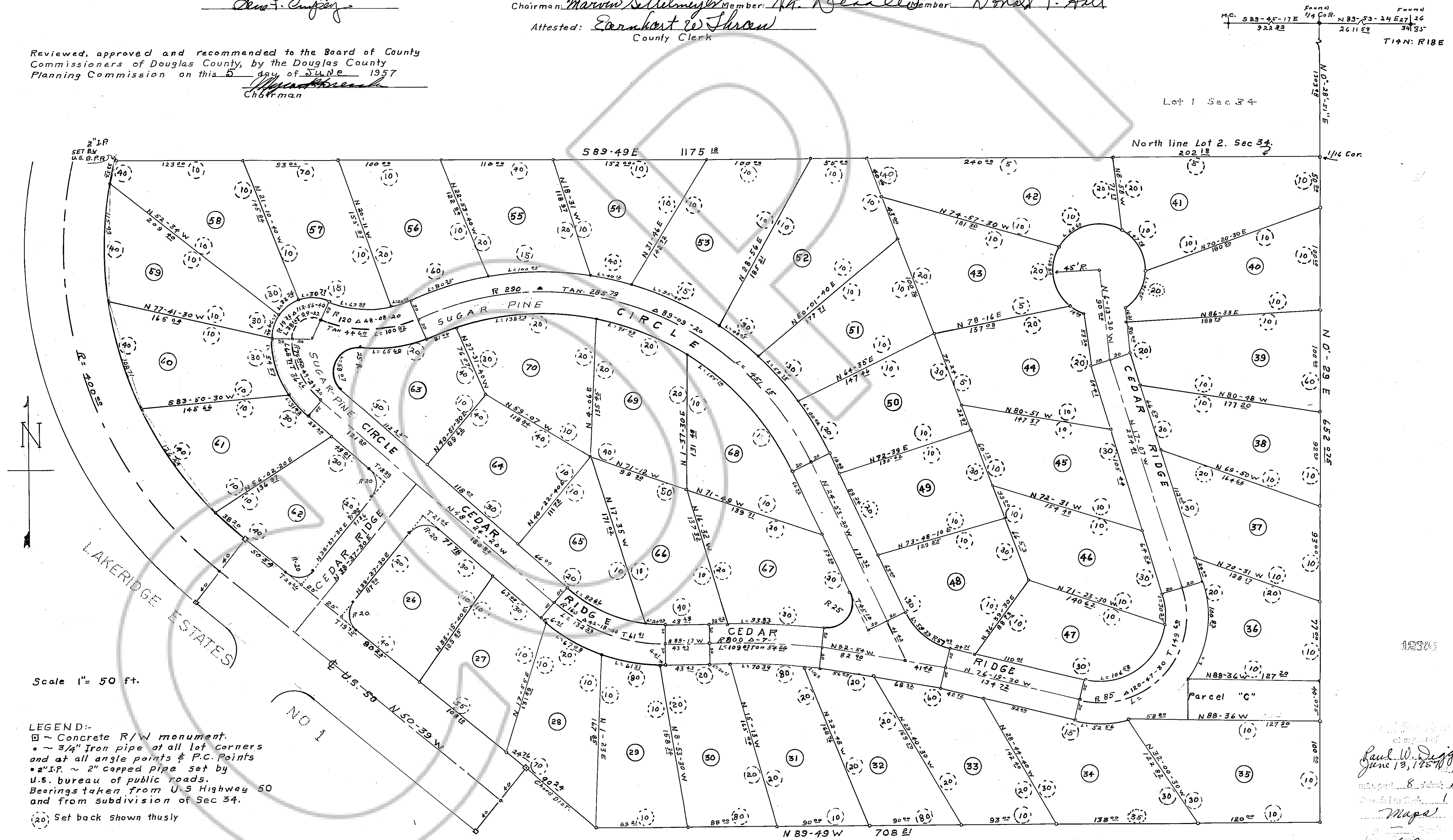
Approved and accepted this 5th day of June 1957 by the Board of County Commissioners of Douglas County, subject to the stipulation that by adopting the same, the Board of County Commissioners hereby assume no responsibility for the public ways shown hereon. The Board of County Commissioners however reserve the right to accept the streets as shown hereon at any future date.

Chairman: Marvin S. Tuttle Member: H. Deane Lewis Member: Donald T. Hall

Attested: Everett W. Thross
County Clerk

Reviewed, approved and recommended to the Board of County Commissioners of Douglas County, by the Douglas County Planning Commission on this 5th day of June 1957

Chairman



Scale 1" = 50 ft.

LEGEND:-
□ - Concrete R/W monument.
• - 3/4" Iron pipe at all lot corners and at all angle points & P.C. Points
• 2" I.P. - 2" capped pipe set by U.S. bureau of public roads.
Bearings taken from U.S Highway 50 and from subdivision of Sec 34.
⊙ - Set back shown thusly

Paul W. Diggle
June 13, 1957
Gene Empey
Map
Ethel Schacht

DOCUMENT #012301

4500gd 114