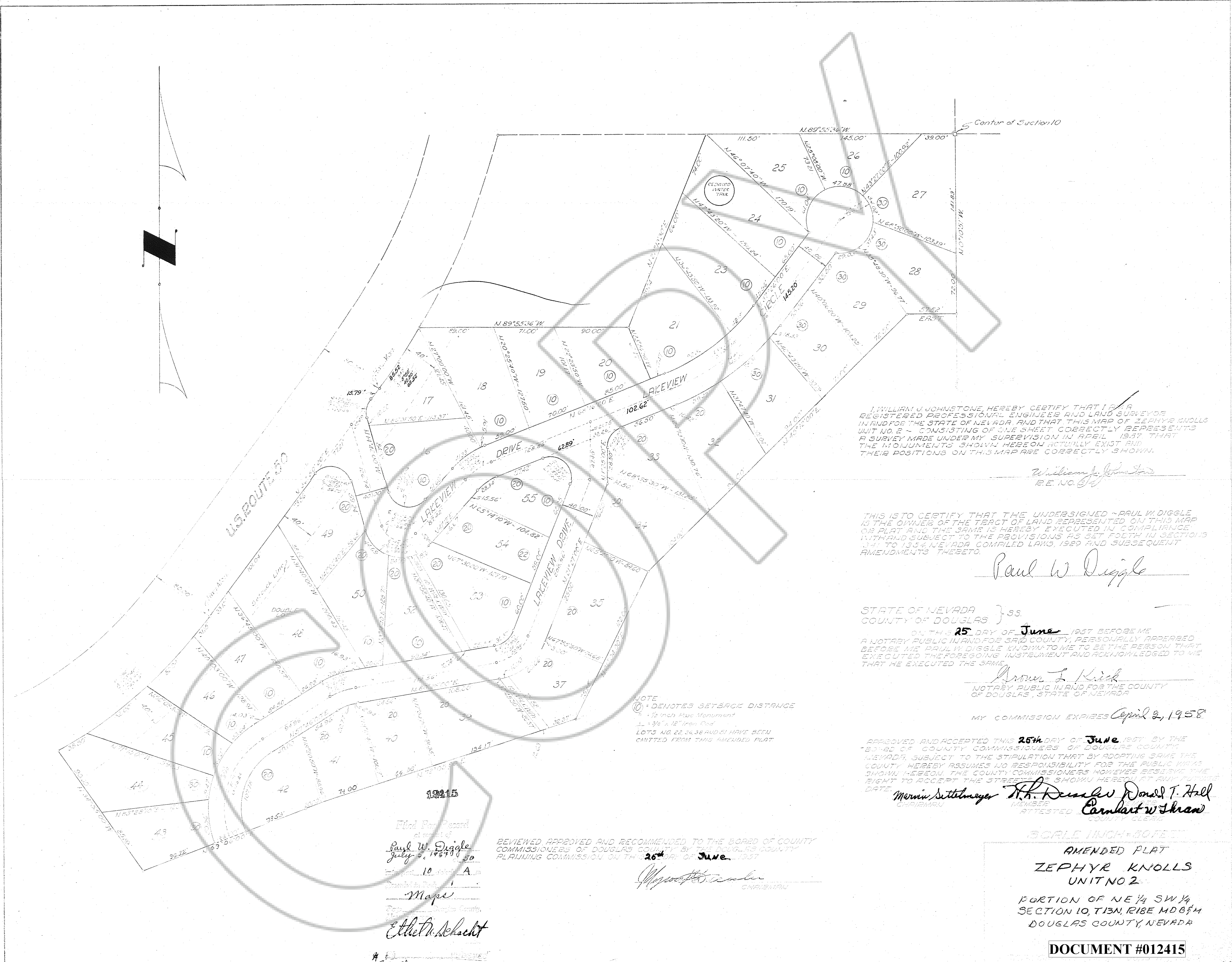


DRAWING NUMBER
Amended
Zephyr Knolls
No. 2
PLAN HOLD CORPORATION • IRVINE, CALIFORNIA
ENGINEER BY REGISTRATION

DRAWING NUMBER
PLAN HOLD CORPORATION • IRVINE, CALIFORNIA
ENGINEER BY REGISTRATION

DRAWING NUMBER
PLAN HOLD CORPORATION • IRVINE, CALIFORNIA
ENGINEER BY REGISTRATION

DRAWING NUMBER
PLAN HOLD CORPORATION • IRVINE, CALIFORNIA
ENGINEER BY REGISTRATION



I, WILLIAM J. JOHNSTONE, HEREBY CERTIFY THAT I AM A REGISTERED PROFESSIONAL ENGINEER AND LAND SURVEYOR IN AND FOR THE STATE OF NEVADA, AND THAT THIS MAP OF ZEPHYR KNOLLS UNIT NO. 2 - CONSISTING OF ONE SHEET CORRECTLY REPRESENTS A SURVEY MADE UNDER MY SUPERVISION IN APRIL, 1957, THAT THE MONUMENTS SHOWN HEREON ACTUALLY EXIST AND THEIR POSITIONS ON THIS MAP ARE CORRECTLY SHOWN.

William J. Johnstone
R.E. NO. 10022

THIS IS TO CERTIFY THAT THE UNDERSIGNED - PAUL W. DIGGLE IS THE OWNER OF THE TRACT OF LAND REPRESENTED ON THIS MAP OR PLAT AND THE SAME IS HEREBY EXECUTED IN COMPLIANCE WITH AND SUBJECT TO THE PROVISIONS AS SET FORTH IN SECTIONS 1341 TO 1354 NEVADA COMPILLED LAWS, 1929 AND SUBSEQUENT AMENDMENTS THERE TO.

Paul W. Diggle

STATE OF NEVADA } ss.
COUNTY OF DOUGLAS }

ON THIS 25 DAY OF June, 1957 BEFORE ME A NOTARY PUBLIC IN AND FOR SAID COUNTY, PERSONALLY APPEARED BEFORE ME PAUL W. DIGGLE KNOWN TO ME TO BE THE PERSON THAT EXECUTED THE FOREGOING INSTRUMENT AND ACKNOWLEDGED TO ME THAT HE EXECUTED THE SAME.

Arnon L. Krick
NOTARY PUBLIC IN AND FOR THE COUNTY OF DOUGLAS, STATE OF NEVADA

MY COMMISSION EXPIRES April 2, 1958

APPROVED AND ACCEPTED THIS 25th DAY OF June, 1957, BY THE BOARD OF COUNTY COMMISSIONERS OF DOUGLAS COUNTY, NEVADA, SUBJECT TO THE STIPULATION THAT BY ADOPTING SAME THE COUNTY HEREBY ASSUMES NO RESPONSIBILITY FOR THE PUBLIC MARKS SHOWN HEREON. THE COUNTY COMMISSIONERS HOWEVER RESERVE THE RIGHT TO ACCEPT THE STREETS SHOWN HEREON AT ANY FUTURE DATE.

Merrin Sittelmejer CHAIRMAN
R.H. Decker MEMBER
Donald T. Hall MEMBER
Carlhart W. Skraw COUNTY CLERK

SCALE 1 INCH = 60 FEET
AMENDED PLAT
ZEPHYR KNOLLS
UNIT NO. 2

PORTION OF NE 1/4 SW 1/4
SECTION 10, T13N, R18E, MOB 64M
DOUGLAS COUNTY, NEVADA

DOCUMENT #012415

NOTE
⑩ DENOTES SETBACK DISTANCE
1/2" inch Pace Monument
1" 3/8" x 12" Iron Rod
LOTS NO. 22, 36, 38 AND 51 HAVE BEEN OMITTED FROM THIS AMENDED PLAT.

Filed For Record
at request of
Paul W. Diggle
July 5, 1957
Map No. 10
Map
Ethel W. Schacht

REVIEWED, APPROVED AND RECOMMENDED TO THE BOARD OF COUNTY COMMISSIONERS OF DOUGLAS COUNTY BY THE DOUGLAS COUNTY PLANNING COMMISSION ON THE 26th DAY OF June, 1957

William J. Johnstone CHAIRMAN

5.0008