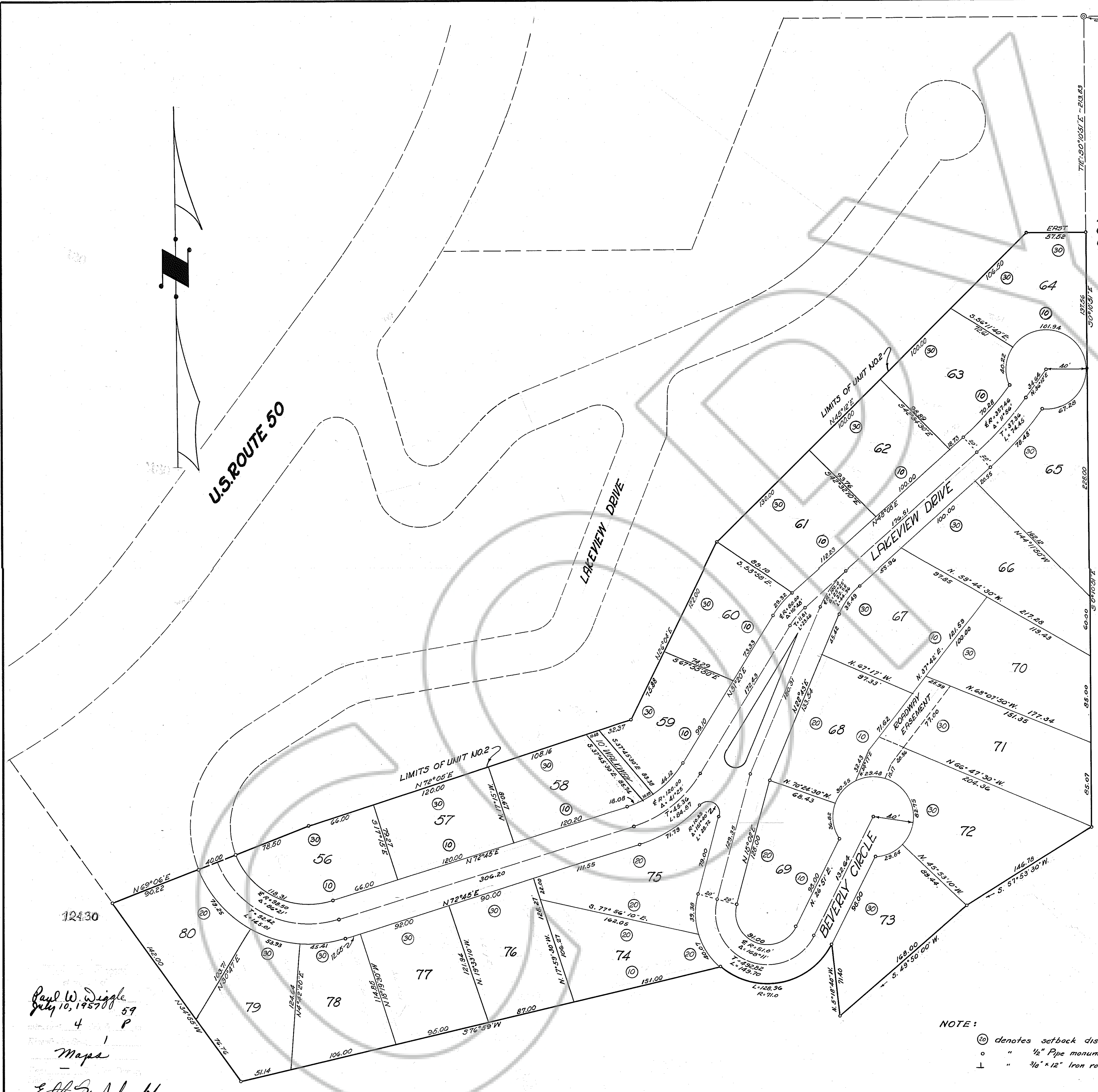


DRAWING NUMBER
Zephyr Knolls
No. 3
PLAN HOLD CORPORATION • IRVINE, CALIFORNIA
REGISTERED PROFESSIONAL ENGINEER

DRAWING NUMBER
PLAN HOLD CORPORATION • IRVINE, CALIFORNIA
REGISTERED PROFESSIONAL ENGINEER

DRAWING NUMBER
PLAN HOLD CORPORATION • IRVINE, CALIFORNIA
REGISTERED PROFESSIONAL ENGINEER

DRAWING NUMBER
PLAN HOLD CORPORATION • IRVINE, CALIFORNIA
REGISTERED PROFESSIONAL ENGINEER



Paul W. Diggle
July 10, 1957
4
P
Maps
Elli N. Schacht

95.00 pd.

Reviewed, approved and recommended to the Board of County Commissioners of Douglas County by the Douglas County Planning Commission on this 5th day of July 1957
Almont G. ...
Chairman

William J. Johnstone, hereby certify that I am a Registered Professional Engineer and Land Surveyor in and for the State of Nevada, and that this map of Zephyr Knolls Unit No. 3 - consisting of one sheet, correctly represents a survey made under my supervision in June 1957 that the monuments shown hereon actually exist and their positions on this map are correctly shown.
William J. Johnstone
R.E. No. 314

This is to certify that the undersigned - Paul W. Diggle is the owner of the tract of land represented on this map or plat and the same is hereby executed in compliance with and subject to the provisions as set forth in Sections 1341 to 1354, Nevada Compiled Laws, 1929 and subsequent Amendments thereto.
Paul W. Diggle

STATE OF NEVADA } 3.5
COUNTY OF DOUGLAS }
On this 3rd day of July 1957 personally appeared before me Paul W. Diggle, known to me to be the person who executed the foregoing instrument and acknowledged to me that he executed same.
Carnehart W. Thrown
County Clerk
Douglas County, Nevada

Approved and accepted this 5th day of July 1957 by the Board of County Commissioners of Douglas County, Nevada, subject to the stipulation that by adopting same the County hereby assumes no responsibility for the public ways shown hereon. The County Commissioners however reserve the right to accept the streets as shown hereon at any future date.
Marvin ... Chairman
Don T. Hall Member
Attested - *Carnehart W. Thrown*
County Clerk

NOTE:
⊙ denotes setback distance.
○ " 1/2" Pipe monument.
┆ " 3/8" x 12" Iron rod.

SCALE 1 INCH = 50 FEET

ZEPHYR KNOLLS
UNIT NO. 3
PORTION OF N.E. 1/4 S.W. 1/4
SECTION 10, T.13N., R.18E., M.D.B.&M.
DOUGLAS COUNTY, NEVADA
JOHNSTONE ENGINEERS
CARSON CITY, NEV. - JUNE 29, 1957

DOCUMENT #012430