

DRAWING NUMBER
Kingsbury Meadows
1st Add

DRAWING NUMBER
Kingsbury Meadows
1st Add

DRAWING NUMBER
Kingsbury Meadows
1st Add

DRAWING NUMBER
Kingsbury Meadows
1st Add

FIRST ADDITION TO KINGSBURY MEADOWS SUBDIVISION DOUGLAS COUNTY - NEVADA

SCALE - 1"=100'

I, WILLIAM A. REINKEN, do hereby certify that this is a true and accurate map of the land surveyed by me and platted into blocks, lots, streets and public places at the instance of DONALD T. HALL and PEGGY HALL, owners; that the street monuments and control points for said blocks, lots, streets and public places, as platted, will be definitely established in accordance with the law as shown hereon; that the tract of land as shown hereon is situate wholly within the S 1/2 of the SE 1/4 of Section 23 and the N 1/2 of the NE 1/4 of Section 26, all in T. 13 N., R. 18 E., M.D.B. & M.

William A. Reinken
Registered Professional Engineer and
Land Surveyor No. 614

KNOW ALL MEN BY THESE PRESENTS:
That we, DONALD T. HALL and PEGGY HALL, do here represent that we are the owners of the land described in this plat; that we approve and accept this plat of said lands as shown and in accordance with and for the uses and purposes set forth in "An Act of the Legislature of the State of Nevada authorizing owners of land to lay out and plat such lands into blocks, lots, streets and public places and providing for the approval and filing of maps or plats thereof, approved March 13, 1905, as amended in 1921 and 1925" and ordinances of Douglas County regulating the subdivision of lands therein.

Donald T. Hall
Peggy Hall

STATE OF NEVADA
COUNTY OF DOUGLAS SS.
On this 5th day of June, 1957, personally appeared before me, EARNHART W. THRAW, County Clerk in and for the County of Douglas, State of Nevada, DONALD T. HALL and PEGGY HALL, known to me to be the persons described in and who executed the foregoing instrument and plat, and who acknowledged to me that they executed the same freely and voluntarily and for the uses and purposes therein mentioned.
In witness whereof, I have hereunto set my hand and affixed my official seal, the day and year in this certificate first above written.

Earnhart W. Thraw
County Clerk in and for
Douglas County, Nevada.

Reviewed, approved and recommended to the County Commissioners of Douglas County by the Douglas County Planning Commission this 5th day of June, 1957.

Chairman
Chairman

Approved and accepted this 5th day of June, 1957 by the Board of County Commissioners of Douglas County, Nevada, subject to the stipulation that the County Commissioners in adopting the same assume no responsibility for the Public Works shown hereon. The County Commissioners, however, reserve the right to accept the streets as shown hereon at any future date.

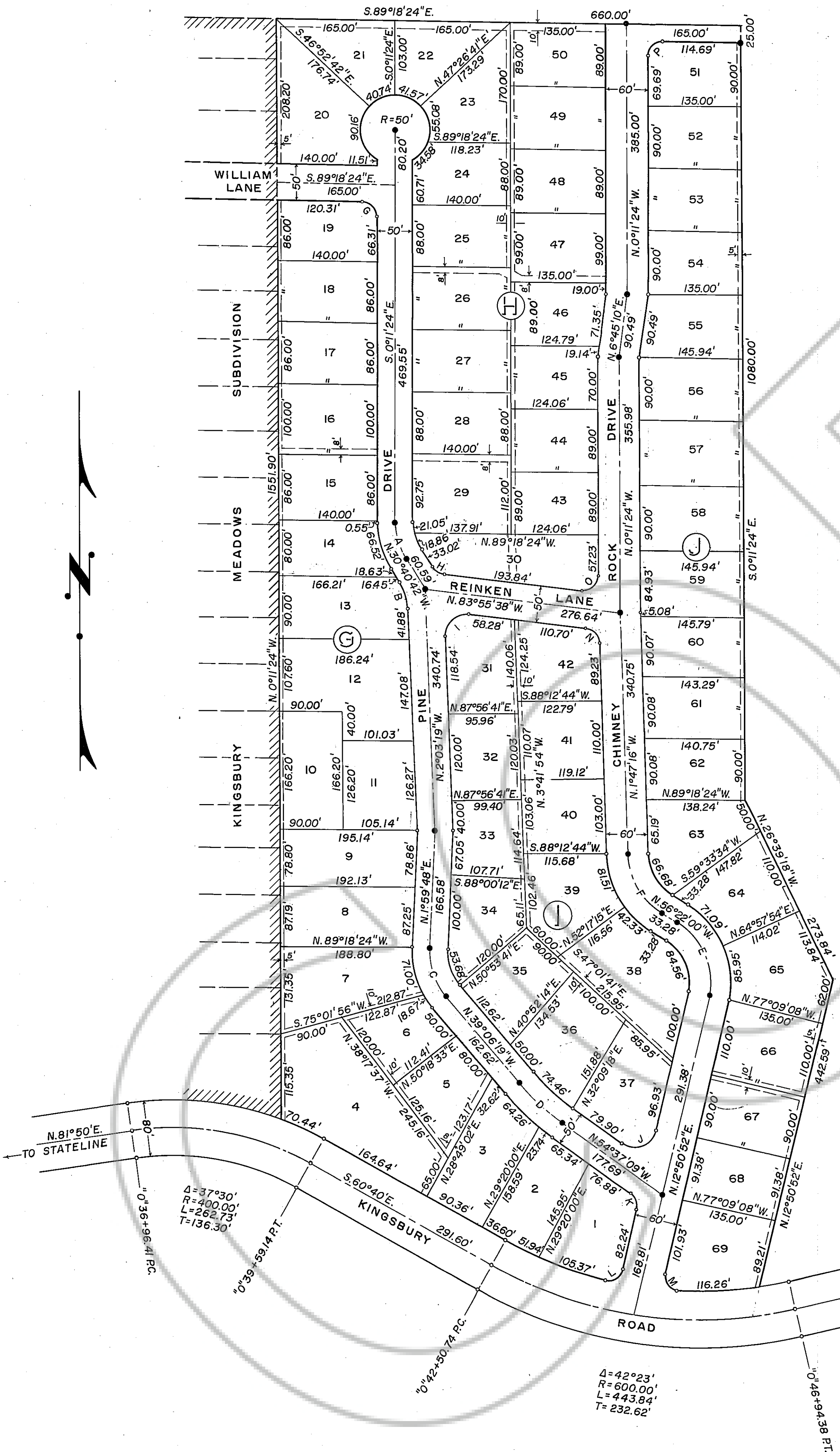
Chairman
Chairman
Member
Member
Member
Member

ATTESTED:
Earnhart W. Thraw
County Clerk

— LEGEND —
• Street monument - bronze disk.
--- Utility easement.

NO.	DELTA	RADIUS	LENGTH	TANGENT
A	30°29'18"	100.00'	53.21'	27.25'
B	28°37'23"	75.00'	37.47'	17.86'
C	41°06'07"	100.00'	71.58'	37.49'
D	15°30'50"	300.00'	81.23'	40.87'
E	69°12'52"	100.00'	120.80'	69.01'
F	54°34'44"	"	95.26'	51.59'
G	89°07'00"	20.00'	31.11'	19.69'
H	53°14'56"	"	18.59'	10.03'
I	98°07'41"	30.00'	51.38'	34.59'
J	112°31'59"	"	58.92'	44.93'
K	67°28'01"	20.00'	23.55'	13.36'
L	90°23'44"	"	31.55'	20.14'
M	100°16'11"	"	35.00'	23.95'
N	82°08'22"	"	28.67'	17.43'
O	96°15'46"	"	33.60'	22.31'
P	90°53'00"	"	31.72'	20.31'

Note:
All lots subject to 10' setback for garages and 30' setback for dwelling units.
Yellow lot stakes pertain to lots fronting on Pine Drive, red stakes to lots fronting on Chimney Rock Drive.



12441

Donald T. Hall
July 17, 1957
8 A
maps
Elliott N. Schacht