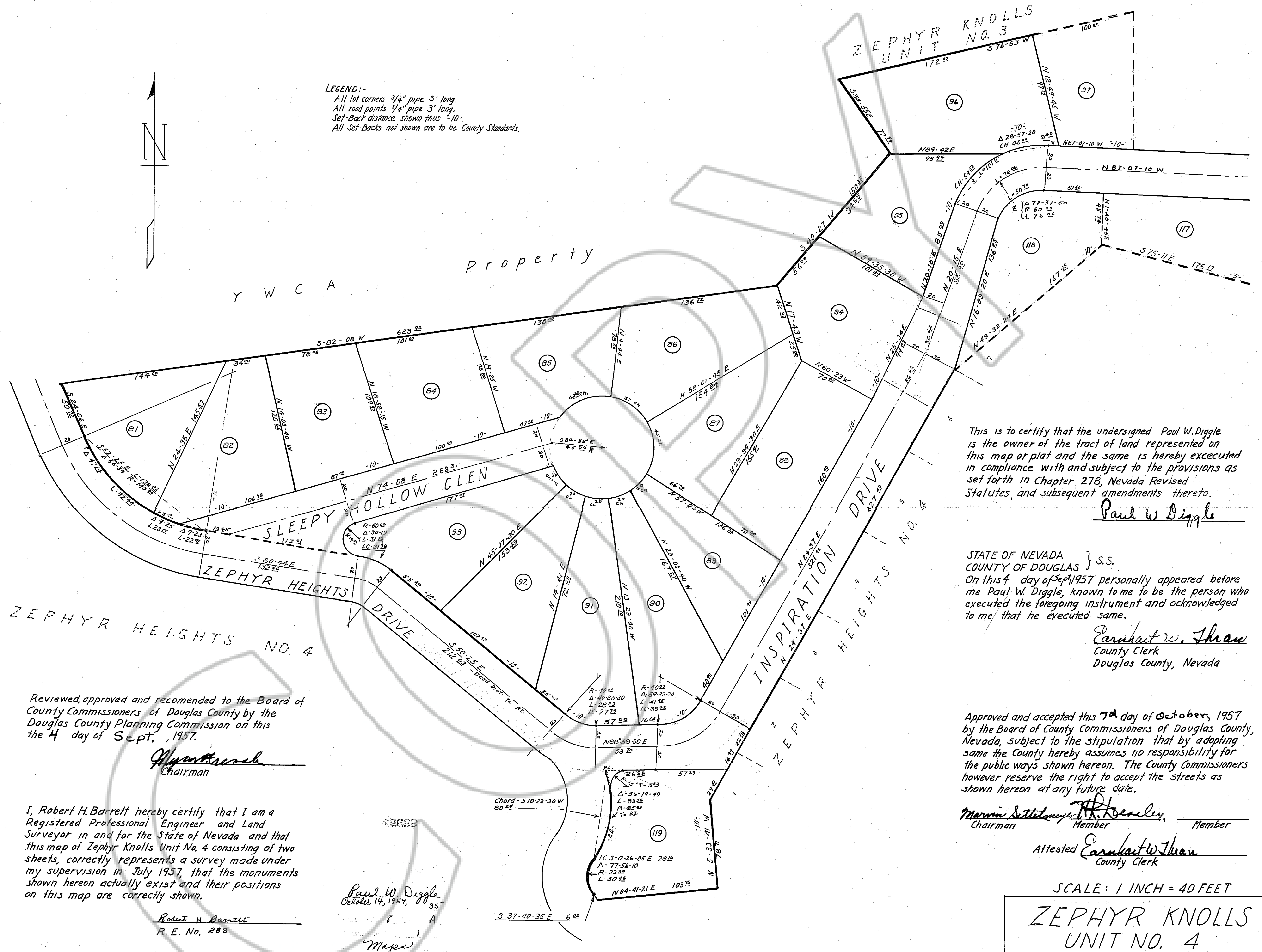


LEGEND:-  
All lot corners 3/4" pipe 3' long.  
All road points 1/2" pipe 3' long.  
Set-Back distance shown thus -10'-  
All Set-Backs not shown are to be County Standards.



This is to certify that the undersigned Paul W. Diggle is the owner of the tract of land represented on this map or plat and the same is hereby executed in compliance with and subject to the provisions as set forth in Chapter 278, Nevada Revised Statutes, and subsequent amendments thereto.  
Paul W. Diggle

STATE OF NEVADA } s.s.  
COUNTY OF DOUGLAS }  
On this 4 day of Sept, 1957 personally appeared before me Paul W. Diggle, known to me to be the person who executed the foregoing instrument and acknowledged to me that he executed same.  
Earnhart W. Thran  
County Clerk  
Douglas County, Nevada

Approved and accepted this 7th day of October, 1957 by the Board of County Commissioners of Douglas County, Nevada, subject to the stipulation that by adopting same the County hereby assumes no responsibility for the public ways shown hereon. The County Commissioners however reserve the right to accept the streets as shown hereon at any future date.  
Martin Sittler Chairman  
R. H. Barrett Member  
Member Member  
Attested Earnhart W. Thran  
County Clerk

Reviewed, approved and recommended to the Board of County Commissioners of Douglas County by the Douglas County Planning Commission on this the 4 day of Sept, 1957.  
Myron ...  
Chairman

I, Robert H. Barrett hereby certify that I am a Registered Professional Engineer and Land Surveyor in and for the State of Nevada and that this map of Zephyr Knolls Unit No. 4 consisting of two sheets, correctly represents a survey made under my supervision in July 1957, that the monuments shown hereon actually exist and their positions on this map are correctly shown.  
Robert H. Barrett  
R. E. No. 288

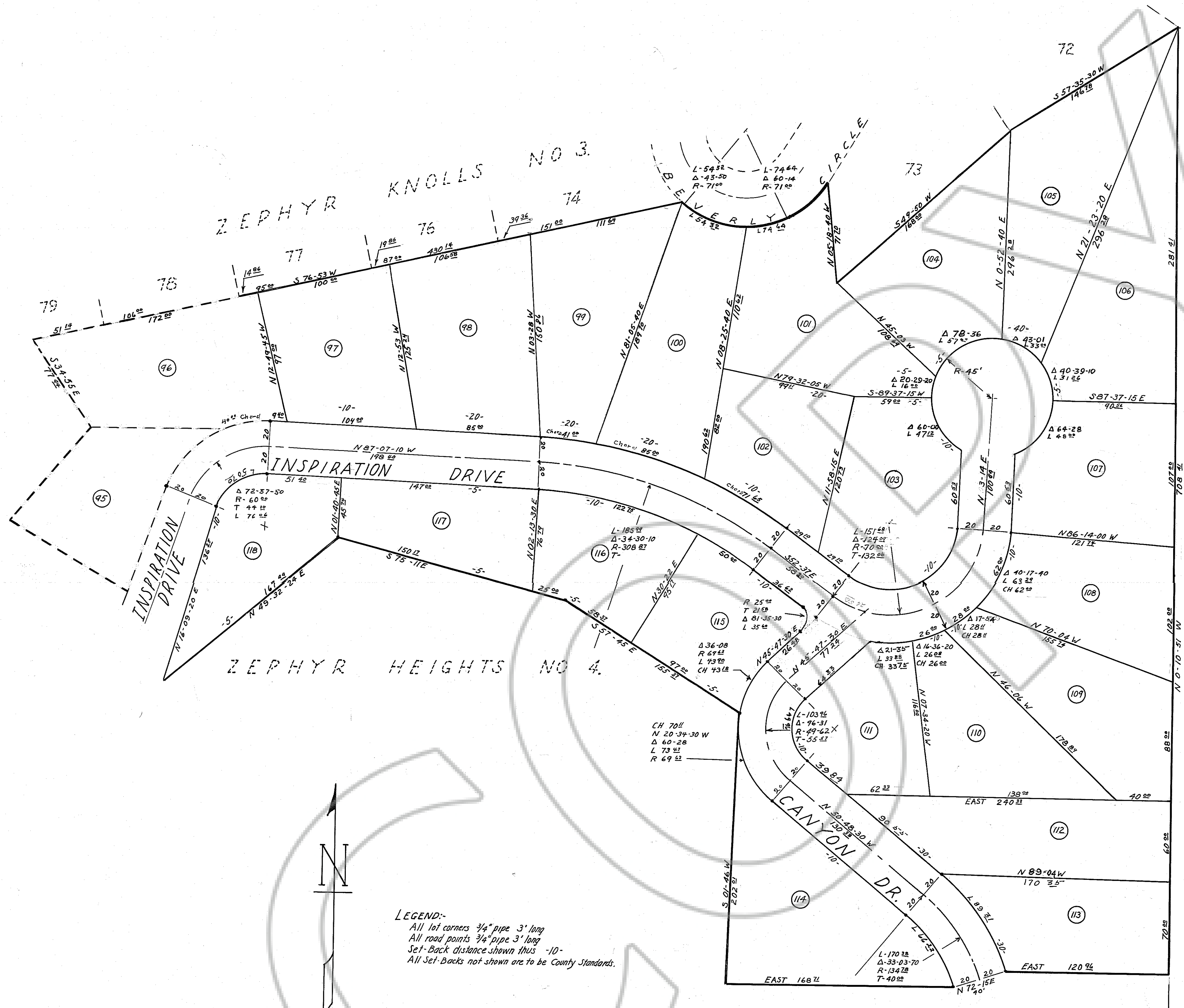
Paul W. Diggle  
October 14, 1957, 80 35  
8 A  
Maps  
Ethel A. Schacht

SCALE: 1 INCH = 40 FEET  
ZEPHYR KNOLLS  
UNIT NO. 4  
PORTION OF E 1/2, SW 1/4,  
SECTION 10, T13N, R18E MDB&M  
DOUGLAS COUNTY, NEVADA  
R. H. BARRETT ENGINEER  
RENO, NEVADA JULY 29, 1957

DOCUMENT #012699

SHEET 1 OF 2 SHEETS

#5.00



LEGEND:-  
 All lot corners 3/4" pipe 3' long  
 All road points 3/4" pipe 3' long  
 Set-Back distance shown thus -10'  
 All Set-Backs not shown are to be County Standards.

Reviewed, approved and recommended to the Board of County Commissioners of Douglas County by the Douglas County Planning Commission on this the 4 day of Sept., 1957.

*Walter Reseda*  
 Chairman

I, Robert H. Barrett hereby certify that I am a Registered Professional Engineer and Land Surveyor in and for the State of Nevada, and that this map of Zephyr Knolls Unit No. 4 consisting of two sheets, correctly represents a survey made under my supervision in July 1957, that the monuments shown hereon actually exist and their positions on this map are correctly shown.

*Robert H. Barrett*  
 R. E. No. 288

This is to certify that the undersigned Paul W. Diggle is the owner of the tract of land represented on this map or plat and the same is hereby executed in compliance with and subject to the provisions as set forth in Chapter 278, Nevada Revised Statutes and subsequent amendments thereto.

*Paul W. Diggle*

STATE OF NEVADA } S.S.  
 COUNTY OF DOUGLAS }  
 On this 4th day of Sept 1957 personally appeared before me Paul W. Diggle, known to me to be the person who executed the foregoing instrument and acknowledged to me that he executed same.

*Samuel W. Shran*  
 County Clerk  
 Douglas County, Nevada

Approved and accepted this 7th day of October 1957 by the Board of County Commissioners of Douglas County, Nevada, subject to the stipulation that by adopting same the County hereby assumes no responsibility for the public ways shown hereon. The County Commissioners however reserve the right to accept the streets as shown hereon at any future date.

*Marvin S. Stehman* Chairman  
*W. H. Crossley* Member  
 Member

Attested *Samuel W. Shran*  
 County Clerk

SCALE: 1 INCH = 40 FEET

ZEPHYR KNOLLS  
 UNIT NO. 4  
 PORTION OF E 1/2, SW 1/4,  
 SECTION 10, T13N, R18E, MDB&M  
 DOUGLAS COUNTY, NEVADA  
 R. H. BARRETT, ENGINEER  
 RENO, NEVADA JULY 29, 1957

DOCUMENT #012699

SHEET 2 OF 2 SHEETS

SEC 10 T13N  
 SEC 15 R18E  
 1/4 COR.