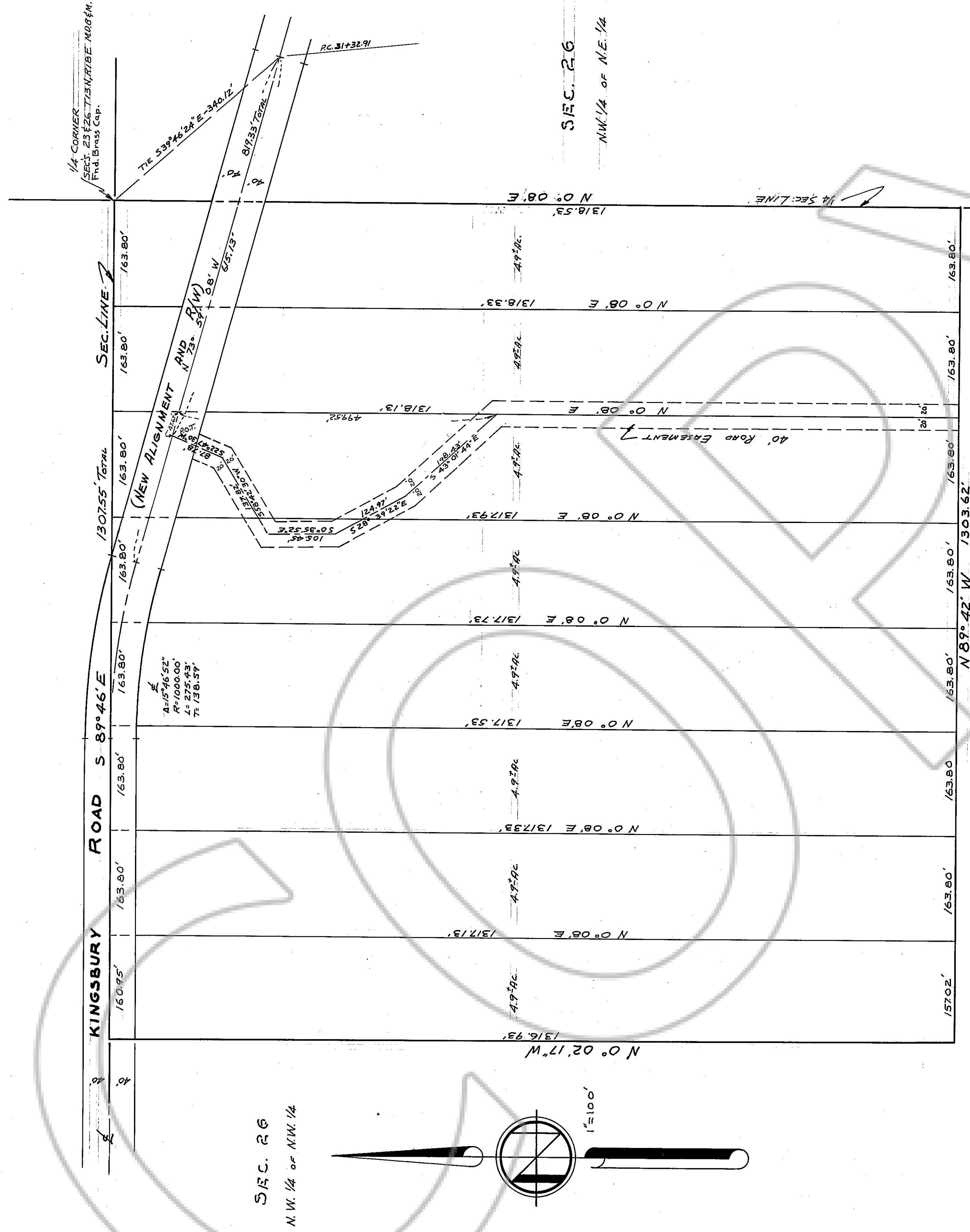


S.E.C. 23  
S.E. 1/4 of S.W. 1/4



S.E.C. 26  
S.E. 1/4 of N.W. 1/4

Filed at the request of Mrs. John Palady  
January 22, 1957, at 3:07 min. past 4 P.M.  
County Recorder  
\$1.00 pd.

I, Gilbert A. Fitch, hereby certify that I am a  
Registered Professional Engineer and Land  
Surveyor in and for the State of Nevada and  
that this map correctly represents a survey  
made under my supervision in September 1957.

Billy A. Fitch  
P.E. No. 1117

Basis of bearings: Section line between section 23  
and section 26, S. 89° 46' E.

SURVEY FOR JOHN & MARY PALADY  
SHOWING LOCATION OF EXISTING ROADS  
IN N.E. 1/4 OF N.W. 1/4 OF SECTION 26  
T. 13 N., R. 18 E., M. D. B. & M.

DOUGLAS COUNTY NEVADA

SCALE: 1" = 100' SEPTEMBER 27, 1957.

12909