

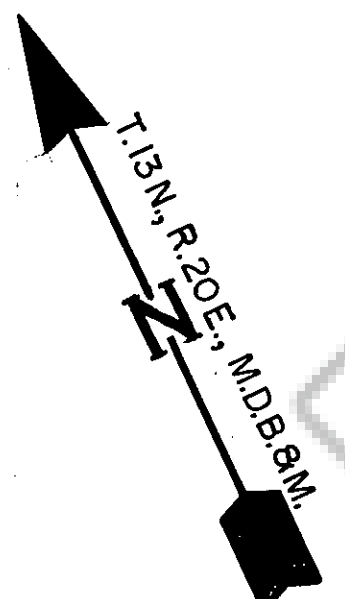
S.R. 3 (U.S. 395)

RAILROAD AVENUE

APPROVED AND ACCEPTED ON THE 5TH DAY OF DECEMBER, 1957, BY THE BOARD OF COUNTY COMMISSIONERS, DOUGLAS COUNTY, NEVADA.

Morris Sattelmeyer
CHAIRMAN

ATTEST *Carroll W. Strain*
COUNTY CLERK



FILED FOR RECORD FEBRUARY _____, 1958,
RECORDS OF DOUGLAS COUNTY, NEVADA.

COUNTY RECORDER

I, JAMES D. WALLACE JR., CERTIFY THAT THIS MAP SHOWING THE AREA ANNEXED TO THE TOWN OF MINDEN, DOUGLAS COUNTY, NEVADA, BY RESOLUTION OF THE BOARD OF COUNTY COMMISSIONERS DATED DECEMBER 5, 1957, HAS BEEN DRAWN TO THE DESIGNATED SCALE IN ACCORDANCE WITH THE TERMS AND PROVISIONS OF SAID RESOLUTION AND FROM INFORMATION OBTAINED FROM THE RECORDS OF DOUGLAS COUNTY.

James D. Wallace Jr.
NEVADA REGISTERED PROFESSIONAL
CIVIL ENGINEER AND
LAND SURVEYOR No. 169

12925

135

Board of County Commissioners
February 2, 1958

4

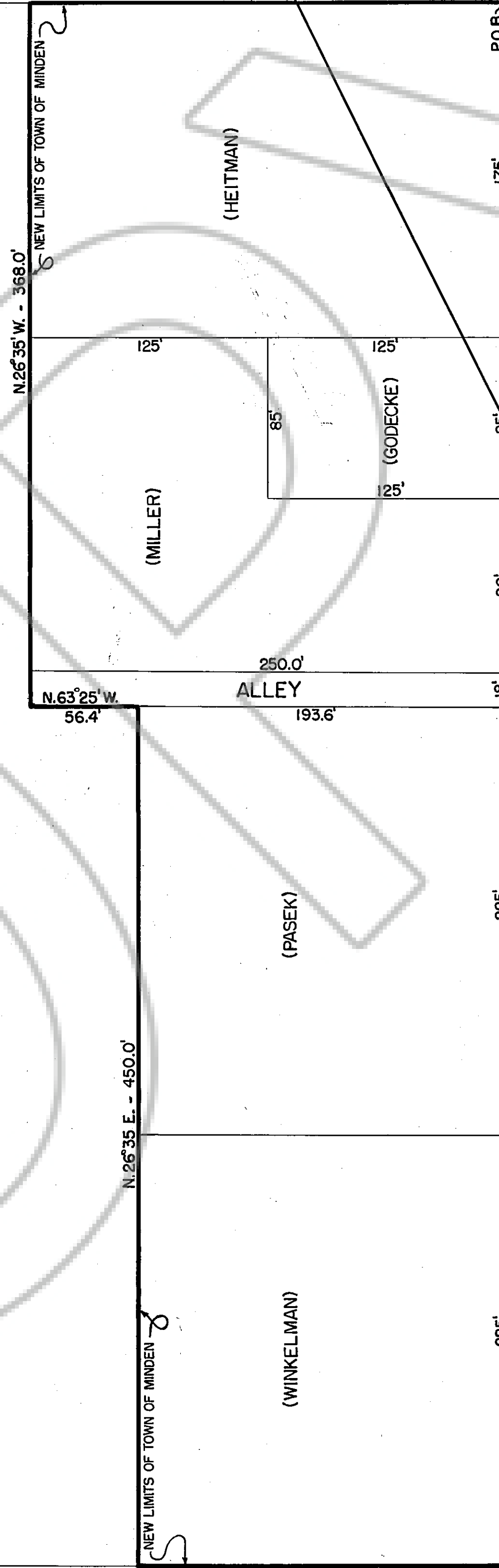
maps

Petition File # 12923
Filed in Book # 18

Resolution File # 12924
Filed in Book # 18

E. H. Schacht

S. 63° 25' E. - 250.0'



PO.B.M. 175' 90' 18' 225' 225' 225' 225'

TENTH STREET

ESMERALDA AVENUE

MONO AVENUE

G

H

I

MINDEN
OF
TOWN
TO
ADDITION
WEST

SCALE: 1" = 50'

135

30 29
31 32

MAP
SHOWING AREA
ANNEXED TO
THE TOWN OF MINDEN,
DOUGLAS COUNTY, NEVADA,
DECEMBER 5, 1957

MINDEN/TOWN OF - DOCUMENT #012925