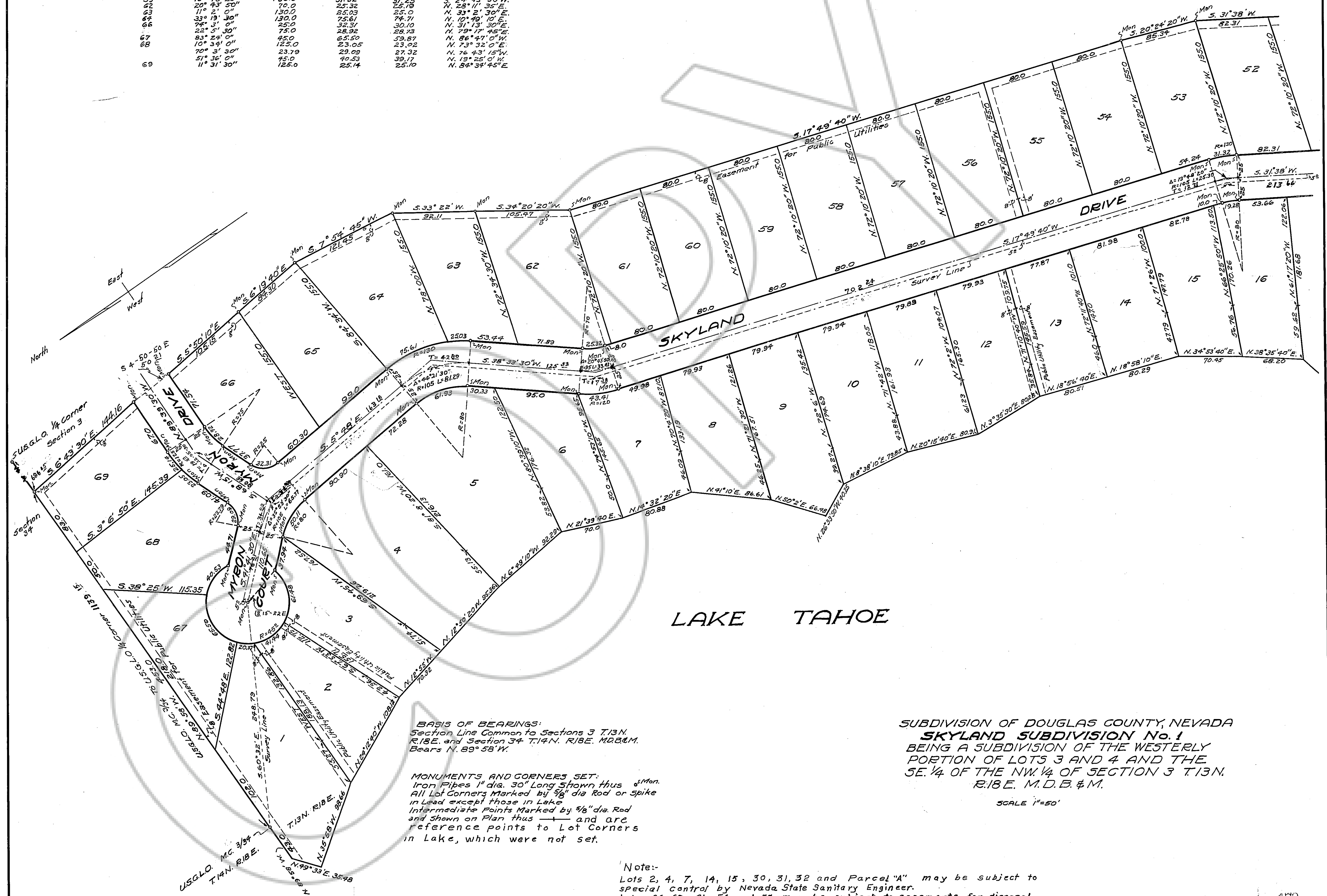


Curve Data Lot Number	Angle	Radius	Length	Chord	Chord Bearing
1	25° 40' 40"	45.0	20.17	20.0	S. 38° 34' W.
2	52° 46' 01"	45.0	41.44	39.99	S. 0° 39' 30" E.
3	78° 16' 40"	45.0	61.48	56.80	S. 66° 10' 30" E.
4	35° 53' 30"	80.0	30.11	49.30	S. 23° 44' 45" E.
5	44° 21' 30"	80.0	61.93	60.40	S. 16° 22' 45" W.
6	20° 43' 20"	120.0	13.41	43.18	S. 20° 11' 35" W.
7	13° 48' 20"	80.0	13.23	13.23	S. 24° 43' 30" W.
8	13° 48' 20"	130.0	31.25	31.25	S. 24° 43' 30" W.
9	20° 43' 20"	70.0	25.32	25.70	N. 28° 11' 35" E.
10	11° 2' 01"	130.0	25.03	25.0	N. 30° 21' 30" E.
11	33° 19' 30"	130.0	74.71	74.71	N. 10° 49' 10" E.
12	25° 0' 01"	25.0	32.31	30.10	N. 31° 13' 30" E.
13	22° 5' 30"	75.0	28.92	28.73	N. 79° 17' 45" E.
14	83° 24' 01"	45.0	65.50	59.87	N. 86° 41' 0" W.
15	10° 34' 01"	125.0	23.05	23.02	N. 73° 32' 0" E.
16	70° 3' 30"	23.70	29.09	27.32	N. 76° 43' 15" W.
17	51° 36' 01"	75.0	40.53	39.17	N. 13° 25' 0" W.
18	11° 31' 30"	125.0	25.14	25.10	N. 84° 34' 45" E.



BASIS OF BEARINGS:
 Section Line Common to Sections 3 T.13N.
 R.18E. and Section 34 T.14N. R.18E. M.D.B. & M.
 Bears N. 89° 58' W.

MONUMENTS AND CORNERS SET:
 Iron Pipes 1" dia. 30" Long shown thus Mon.
 All Lot Corners Marked by $\frac{3}{8}$ " dia Rod or Spike
 in Lead except those in Lake
 Intermediate Points Marked by $\frac{1}{8}$ " dia. Rod
 and shown on Plan thus --- and are
 reference points to Lot Corners
 in Lake, which were not set.

Note:-
 Lots 2, 4, 7, 14, 15, 30, 31, 32 and Parcel "A" may be subject to
 special control by Nevada State Sanitary Engineer.
 Lots 66, 68, 61, 54 and 53 may be subject to easements for disposal
 of sanitary sewage from the above mentioned lots.

SUBDIVISION OF DOUGLAS COUNTY, NEVADA
SKYLAND SUBDIVISION No. 1
 BEING A SUBDIVISION OF THE WESTERLY
 PORTION OF LOTS 3 AND 4 AND THE
 SE. 1/4 OF THE NW. 1/4 OF SECTION 3 T.13N.
 R.18E. M.D.B. & M.

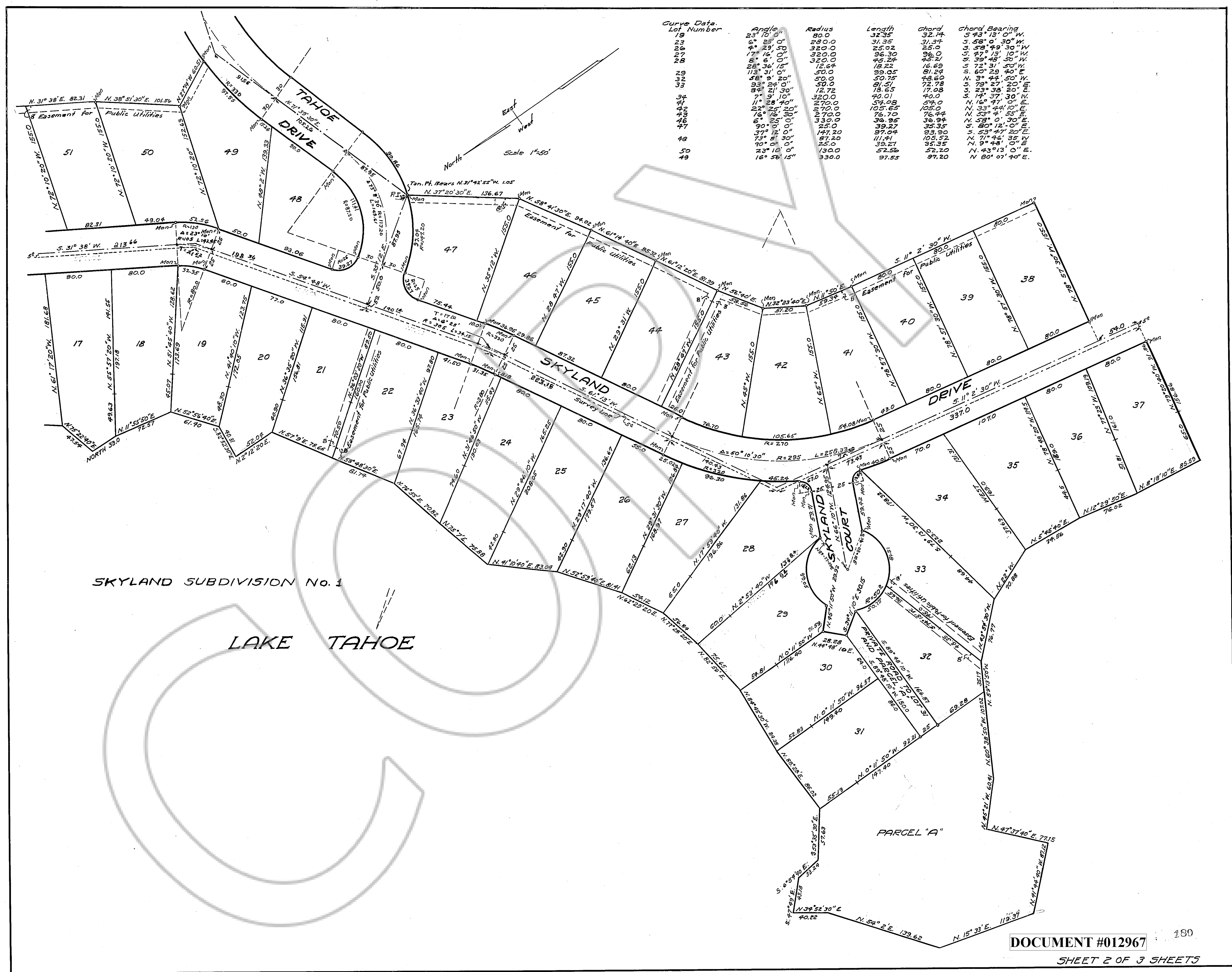
SCALE 1"=50'

PLAN HOLD CORPORATION • IRVINE, CALIFORNIA
 REPRODUCED BY NUMBER 02048
 POSSIBLE TYPE OF PRINT ON THIS DATE

PLAN HOLD CORPORATION • IRVINE, CALIFORNIA
 REPRODUCED BY NUMBER 02048
 POSSIBLE TYPE OF PRINT ON THIS DATE

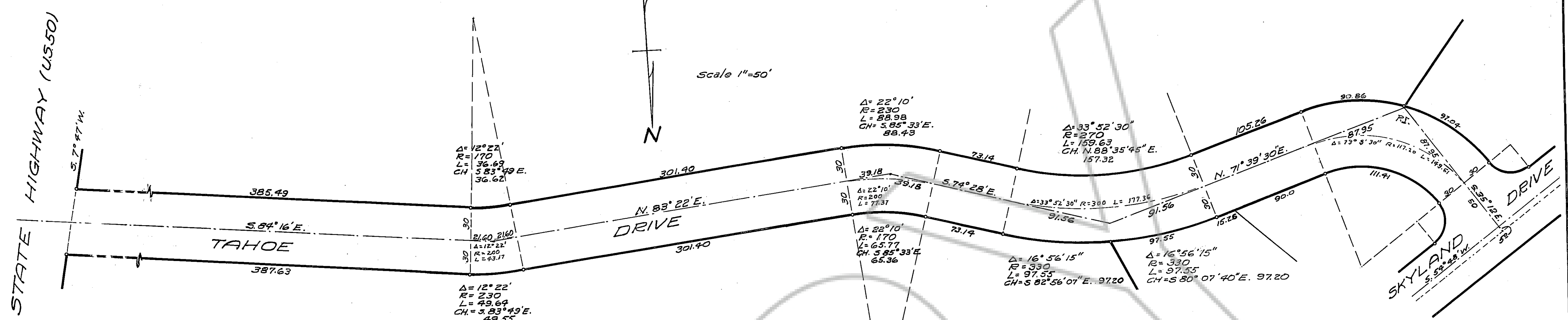
PLAN HOLD CORPORATION • IRVINE, CALIFORNIA
 REPRODUCED BY NUMBER 02048
 POSSIBLE TYPE OF PRINT ON THIS DATE

PLAN HOLD CORPORATION • IRVINE, CALIFORNIA
 REPRODUCED BY NUMBER 02048
 POSSIBLE TYPE OF PRINT ON THIS DATE



Curve Data

Lot Number	Angle	Radius	Length	Chord	Chord Bearing
19	23° 10' 0"	80.0	32.35	32.14	S 43° 13' 0" W
23	6° 25' 0"	280.0	31.35	31.34	S 58° 0' 30" W
26	17° 29' 50"	320.0	25.02	25.0	S 58° 49' 30" W
27	17° 16' 0"	320.0	26.30	26.30	S 57° 49' 10" W
28	8° 36' 15"	320.0	45.24	45.21	S 59° 48' 50" W
29	113° 31' 0"	50.0	18.22	18.22	S 72° 31' 50" W
30	38° 3' 20"	50.0	39.05	39.05	S 60° 29' 40" W
31	93° 24' 0"	50.0	50.75	48.60	S 9° 44' 50" W
32	84° 21' 30"	50.0	50.0	48.60	S 9° 27' 20" W
33	7° 9' 10"	12.72	18.65	17.08	S 23° 58' 20" E
34	11° 28' 40"	320.0	40.0	40.0	S 14° 37' 30" W
35	22° 6' 10"	270.0	54.08	54.0	N 16° 47' 0" E
36	16° 16' 10"	270.0	105.0	105.0	N 33° 48' 10" E
37	6° 25' 0"	330.0	76.70	76.70	N 53° 4' 55" E
38	30° 0' 0"	25.0	36.95	36.94	N 58° 0' 30" E
39	37° 12' 0"	25.0	25.0	25.35	S 80° 12' 0" E
40	70° 0' 0"	147.20	97.24	93.90	S 53° 47' 20" E
41	23° 10' 0"	87.20	11.41	10.52	N 70° 44' 35" W
42	16° 58' 15"	130.0	39.27	35.35	N 9° 48' 0" E
43			52.56	52.20	N 43° 13' 0" E
44			330.0	97.20	N 80° 07' 40" E



Reviewed, approved and recommended to the Board of County Commissioners of Douglas County by the Douglas County Planning Commission on this the 11th day of December 1957

Alfred W. ...
Chairman

STATE OF NEVADA } ss.
 COUNTY OF DOUGLAS }
 On this 5th day of Dec. 1957 personally appeared before me, John Cheney, known to me to be the person who executed the foregoing instrument and acknowledged to me that he executed same.

Carneal W. Thraw
County Clerk
Douglas County, Nevada

I, Robert H. Barrett, hereby certify that I am a Registered Professional Engineer and Land Surveyor in and for the State of Nevada, and that this map of Skyland Subdivision, No. 1 consisting of three sheets, correctly represents a survey made under my supervision in August and September 1957, that monuments shown hereon actually exist and their positions on this map are correctly shown

Robert H. Barrett
R.E. No. 288

Approved and accepted this 14th day of January, 1958 by the Board of County Commissioners of Douglas County, Nevada, subject to the stipulation that by adopting same the County hereby assumes no responsibility for the public ways shown hereon. The County Commissioners however reserve the right to accept the streets as shown hereon at any future date.

Maxine ... Chairman
... Member
Donald T. Hall Member

This is to certify that the undersigned, Stockton Garden Homes Inc. is the owner of the tract of land represented on this map or plat and the same is hereby executed in compliance with and subject to the provisions as set forth in Chapter 278 Nevada Revised Statutes and subsequent amendments thereto.

Stockton Garden Homes Inc.
 by *John Cheney*
 Secretary-Treasurer

Minutes of special meeting in Book 6, Misc. page 114.

12987

Filed For Record
 at request of
Robert H. Barrett
 February 27, 1958 at 4:00
 min. past 8 o'clock A. M.
 Recorded in Book 1
 Maps
 Page - Douglas County,
 Nevada Records.
Ethel M. Schacht