

DRAWING NUMBER
TOPAZ LODGE SUBDIVISION
FIRST & SECOND SECTIONS

DRAWING NUMBER
PLAN HOLD CORPORATION • IRVINE, CALIFORNIA
RECORDED BY NUMBER 0708A

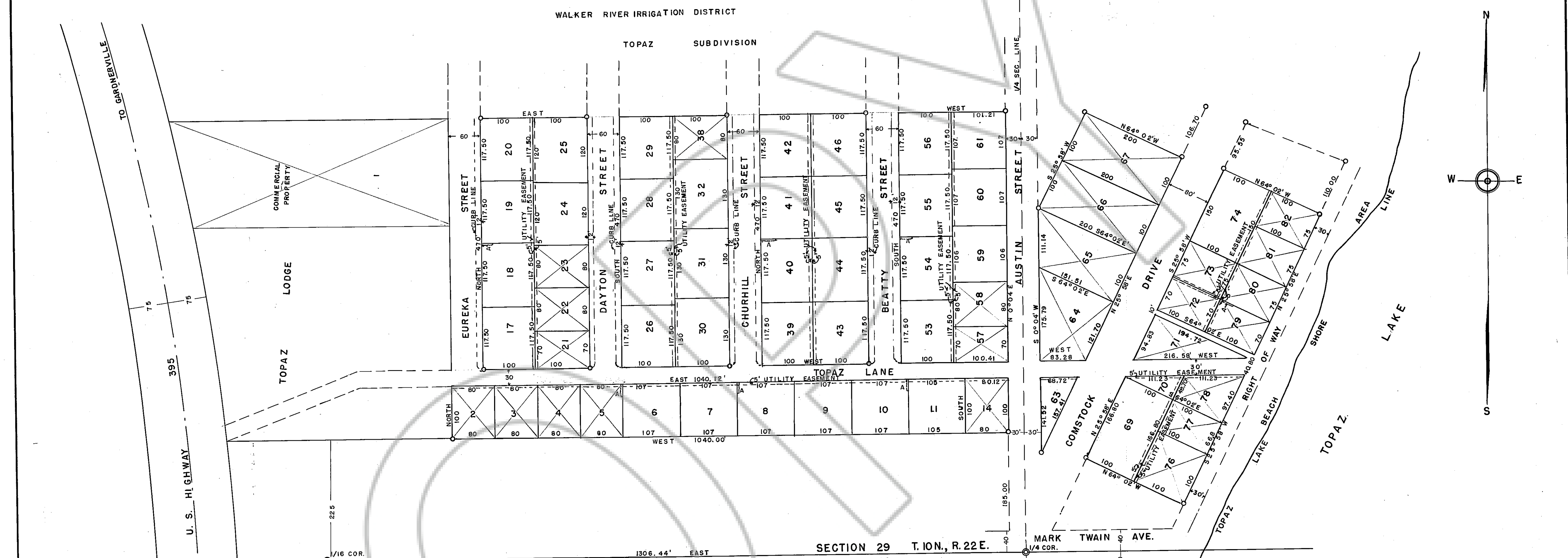
DRAWING NUMBER
PLAN HOLD CORPORATION • IRVINE, CALIFORNIA
RECORDED BY NUMBER 0708A

DRAWING NUMBER
PLAN HOLD CORPORATION • IRVINE, CALIFORNIA
RECORDED BY NUMBER 0708A

SURVEYORS CERTIFICATE:
THE UNDERSIGNED CERTIFIES THAT HE IS THE SURVEYOR RESPONSIBLE FOR THE SURVEY AND THE PREPARATION OF THIS MAP; THAT THE SURVEY OF SAID PROPERTY WAS COMPLETED ON THE 26TH. DAY OF JULY, 1958, AND WAS MADE BY THE UNDERSIGNED, AND THAT THE SURVEY IS TRUE AND COMPLETE AS SHOWN, AND THAT THE MONUMENTS ARE OF THE CHARACTER THAT OCCUPY THE POSITIONS INDICATED.
DATED THIS 2ND. DAY OF SEPTEMBER, 1958.

Walter G. Reid
WALTER G. REID
R.E. & L.S. 235

A 2' X 20' ANCHOR EASEMENT
○ 6" X 6" X 12" CONCRETE SUBDIVISION MONUMENTS
● B.L.M. SURVEY MON'S. PIPE & BRASS CAP
☒ INDICATES LOTS NOT AFFECTED BY OR SUBJECT TO AMENDMENTS.



OWNERS CERTIFICATE:
KNOW ALL MEN BY THESE PRESENTS: THAT M.E. LIGHT IS THE OWNER OF THE AMENDED PORTIONS OF THE TRACT OF LAND SHOWN ON THIS MAP, OR PLAT, AND THAT THE SAME IS HEREBY EXECUTED IN COMPLIANCE WITH AND SUBJECT TO THE PROVISIONS OF THE LAWS OF THE STATE OF NEVADA AUTHORIZING THE OWNERS OF LAND TO LAY OUT AND PLAT SUCH LANDS INTO LOTS BLOCKS AND STREETS.
THE UNDERSIGNED DOES HEREBY OFFER TO DEDICATE FOR PUBLIC STREET AND ROADWAY PURPOSES EACH OF THE STREETS DELINEATED ON SAID PLAT AND DOES HEREBY DEDICATE FOR PUBLIC UTILITY PURPOSES EACH OF THE UTILITY EASEMENTS DELINEATED ON SAID PLAT.
IN WITNESS WHEREOF, M. E. LIGHT HAS HEREUNTO SET HIS HAND THIS 5th DAY OF SEPTEMBER, 1958.

M. E. Light
M. E. LIGHT

CERTIFICATE OF COUNTY CLERK:
THE UNDERSIGNED CERTIFIES THAT HE IS THE COUNTY CLERK OF DOUGLAS COUNTY, NEVADA, AND THAT THE COUNTY COMMISSIONERS OF SAID COUNTY APPROVED THE MAP, SUBJECT TO THE STIPULATION THAT THE COUNTY COMMISSIONERS IN ADOPTING SAME HEREBY ASSUMES NO RESPONSIBILITY FOR THE PUBLIC WAYS SHOWN HEREON: THE SAME NOT BEING ACCEPTED AS PUBLIC DEDICATIONS. THE COUNTY COUNTY COMMISSIONERS HOWEVER RESERVES THE RIGHT TO ACCEPT THE STREETS AS SHOWN HEREON AT ANY FUTURE DATE.
DATED THIS 5th DAY OF SEPTEMBER, 1958.

Emmett W. Shran
COUNTY CLERK

STATE OF NEVADA
COUNTY OF
ON THIS 5th DAY OF SEPTEMBER, 1958, PERSONALLY APPEARED BEFORE ME, A NOTARY PUBLIC IN AND FOR SAID COUNTY AND STATE, M. E. LIGHT, KNOWN TO ME TO BE THE PERSON DESCRIBED IN AND WHO EXECUTED THE FOREGOING INSTRUMENT, AND HE ACKNOWLEDGED TO ME THAT HE EXECUTED THE SAME FREELY AND VOLUNTARILY AND FOR THE USES AND PURPOSES THEREIN MENTIONED.
IN WITNESS WHEREOF, I HAVE HEREUNTO SET MY HAND AND SEAL THE DAY AND YEAR IN THIS CERTIFICATE FIRST ABOVE WRITTEN.

Simon L. Krick
NOTARY PUBLIC IN AND FOR THE COUNTY OF NEVADA.
MY COMMISSION EXPIRES
April 2, 1962.

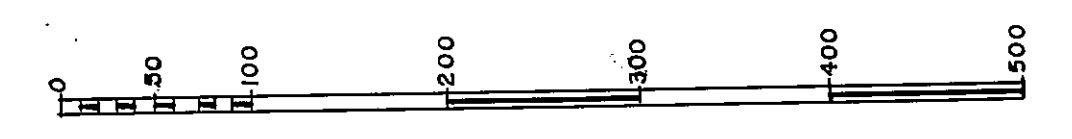
CERTIFICATE OF COUNTY SURVEYOR
I hereby certify that I have examined this AMENDED MAP of TOPAZ LODGE SUBDIVISION, FIRST AND SECOND SECTIONS; have determined that this amended map is consistent and in agreement with the original approved and filed subdivision map in all particulars not specifically and purposely changed; that the changes made have been approved by the Board of County Commissioners in accordance with the recommendations of the Planning Commission; that applicable laws and ordinances have been complied with; and that I am satisfied that the map is technically correct.
Dated this 10th day of September 1958.

J.M. Littlefield
J.M. Littlefield
County Surveyor
R.E. & L.S. No. A63

NOTE: THE AMENDMENTS TO THE "TOPAZ LODGE SUBDIVISION (FIRST & SECOND SECTIONS)," CONSISTS OF THE ENLARGEMENT OF CERTAIN LOTS AND RENUMBERING. NO CHANGE IS MADE IN THE EXTERIOR BOUNDARIES, STREETS OR RIGHTS-OF-WAYS.

AMENDED MAP OF
TOPAZ LODGE SUBDIVISION
FIRST & SECOND SECTIONS
BY
M. E. LIGHT
IN THE SE 1/4 SW 1/4 & SW 1/4 SE 1/4,
SECTION 29, T. 10N., R. 22E., M.D.B. & M.
DOUGLAS COUNTY, NEVADA.

SCALE - 1" = 100'



DOCUMENT #013594

WALTER G. REID
R. E. 235

Reversionary Map
Doc# 2021-977127

Reversionary Map
Doc# 2022-988532

M. E. Light
September 6, 1958
3
Maps
E. H. Schacht

*7 P.M. limited kept except to this sub division
see to area.
W. W. White
July 29, 1958*