

DRAWING NUMBER  
Revised Plat  
Lake Ridge Estates #1  
Sheet 1 of 2

DRAWING NUMBER  
PLANNED CORPORATION - IRVINE CALIFORNIA  
REGISTERED PROFESSIONAL ENGINEER

DRAWING NUMBER  
PLANNED CORPORATION - IRVINE CALIFORNIA  
REGISTERED PROFESSIONAL ENGINEER

DRAWING NUMBER  
PLANNED CORPORATION - IRVINE CALIFORNIA  
REGISTERED PROFESSIONAL ENGINEER

# LAKERIDGE ESTATES NO. 1

## DOUGLAS COUNTY-NEVADA

### REVISED PLAT

I, ROBERT H. BARRETT, DO HEREBY CERTIFY THAT I AM A REGISTERED PROFESSIONAL ENGINEER AND LAND SURVEYOR IN AND FOR THE STATE OF NEVADA, THAT THIS MAP OF LAKERIDGE ESTATES NO. 1 CONSISTING OF 2 SHEETS- CORRECTLY REPRESENTS A SURVEY MADE BY ME IN APRIL 1957 AND THAT THE MONUMENTS SHOWN HEREON ACTUALLY EXIST AND THEIR POSITIONS ON THIS MAP ARE CORRECTLY SHOWN.

Robert H. Barrett  
R. E. NO 288

COUNTY OF DOUGLAS S S  
STATE OF NEVADA

ON THIS 5<sup>th</sup> DAY OF August 1958 PERSONALLY APPEARED BEFORE ME, PAUL W. DIGGLE AND GENE EMPEY, KNOWN TO ME TO BE THE PERSONS THAT EXECUTED THE FOREGOING INSTRUMENT AND ACKNOWLEDGED TO ME THAT THEY EXECUTED THE SAME FREELY AND VOLUNTARILY.  
County Clerk - Cassius W. Shuman  
NOTARY PUBLIC IN AND FOR DOUGLAS COUNTY - STATE OF NEVADA  
MY COMMISSION EXPIRES

REVIEWED, APPROVED AND RECOMMENDED TO THE BOARD OF COUNTY COMMISSIONERS OF DOUGLAS COUNTY BY THE DOUGLAS COUNTY PLANNING COMMISSION ON THIS 26<sup>th</sup> DAY OF March 1958

[Signature]  
CHAIRMAN

THIS IS TO CERTIFY THAT THE UNDERSIGNED - PAUL W. DIGGLE, AND GENE EMPEY - ARE THE OWNERS OF THE TRACT OF LAND REPRESENTED ON THIS MAP AND THE SAME IS HEREBY EXECUTED IN COMPLIANCE WITH AND SUBJECT TO THE PROVISIONS AS SET FORTH IN CHAPTER 278 NEVADA REVISED STATUTES AND SUBSEQUENT AMENDMENTS THERETO

Paul W. Diggle  
Gene F. Empey

APPROVED AND ACCEPTED THIS 5<sup>th</sup> DAY OF August 1958 BY THE BOARD OF COUNTY COMMISSIONERS OF DOUGLAS COUNTY, SUBJECT TO THE STIPULATION THAT BY ADOPTING THE SAME HEREBY ASSUME NO RESPONSIBILITY FOR THE PUBLIC WAYS SHOWN HEREON. THE COUNTY COMMISSIONERS HOWEVER RESERVE THE RIGHT TO ACCEPT THE STREETS AS SHOWN HEREON AT ANY FUTURE DATE

CHAIRMAN Marvin S. [Signature] MEMBER [Signature] MEMBER Donald J. Hall  
ATTESTED Cassius W. Shuman  
COUNTY CLERK

I, J. N. LITTLEFIELD, ENGINEER FOR DOUGLAS COUNTY STATE OF NEVADA HEREBY CERTIFY THAT I HAVE EXAMINED THE MAP OF LAKERIDGE ESTATES NO. 1. AND THAT SAID SUBDIVISION IS SUBSTANTIALLY AS IT APPEARED ON THE ORIGINAL MAP. THAT ALL OF THE CONDITIONS OF STATE LAWS AND LOCAL ORDINANCES HAVE BEEN COMPLIED WITH AND I AM SATISFIED THAT THE SAME IS TECHNICALLY CORRECT

J. N. Littlefield 17 February 1959  
ENGINEER FOR COUNTY OF DOUGLAS  
STATE OF NEVADA

14083

CERTIFICATE OF AMENDMENT  
DOC NO. 841523 BK 414 PG 4904  
CERTIFICATE OF AMENDMENT  
DOC NO. 842097 BK 0514 PG 1162  
CERTIFICATE OF AMENDMENT  
DOC NO. 844172 BK 614 PG 1680

REVERSIONARY MAP  
DOC# 2023-1002201

Filed For Record  
at request of  
Robert H. Barrett  
February 23, 1959, at 26  
min. past 3 o'clock P. M.  
Recorded in Book 1  
Maps  
Page - Douglas County  
Nevada Register  
E. [Signature]  
County Recorder.

DOCUMENT #014083

\$5.00 pd.  
SHEET 1 of 2

DRAWING NUMBER  
Rev: See Plot  
Lake Ridge Estates #1  
Sheet 2 of 2  
PLAN HOLD CORPORATION • IRVINE, CALIFORNIA  
RECORDED BY NUMBER 07234

DRAWING NUMBER  
PLAN HOLD CORPORATION • IRVINE, CALIFORNIA  
RECORDED BY NUMBER 07234

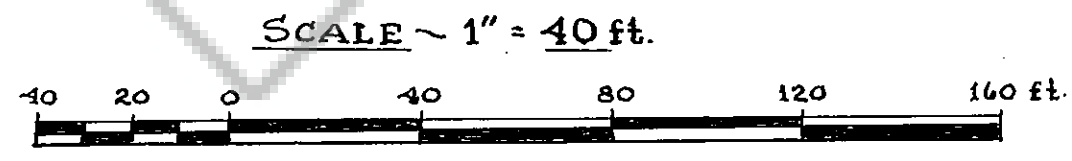
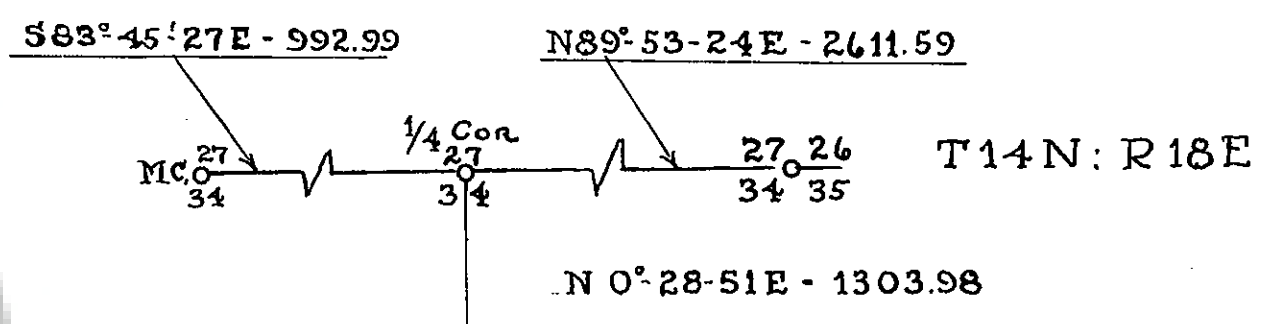
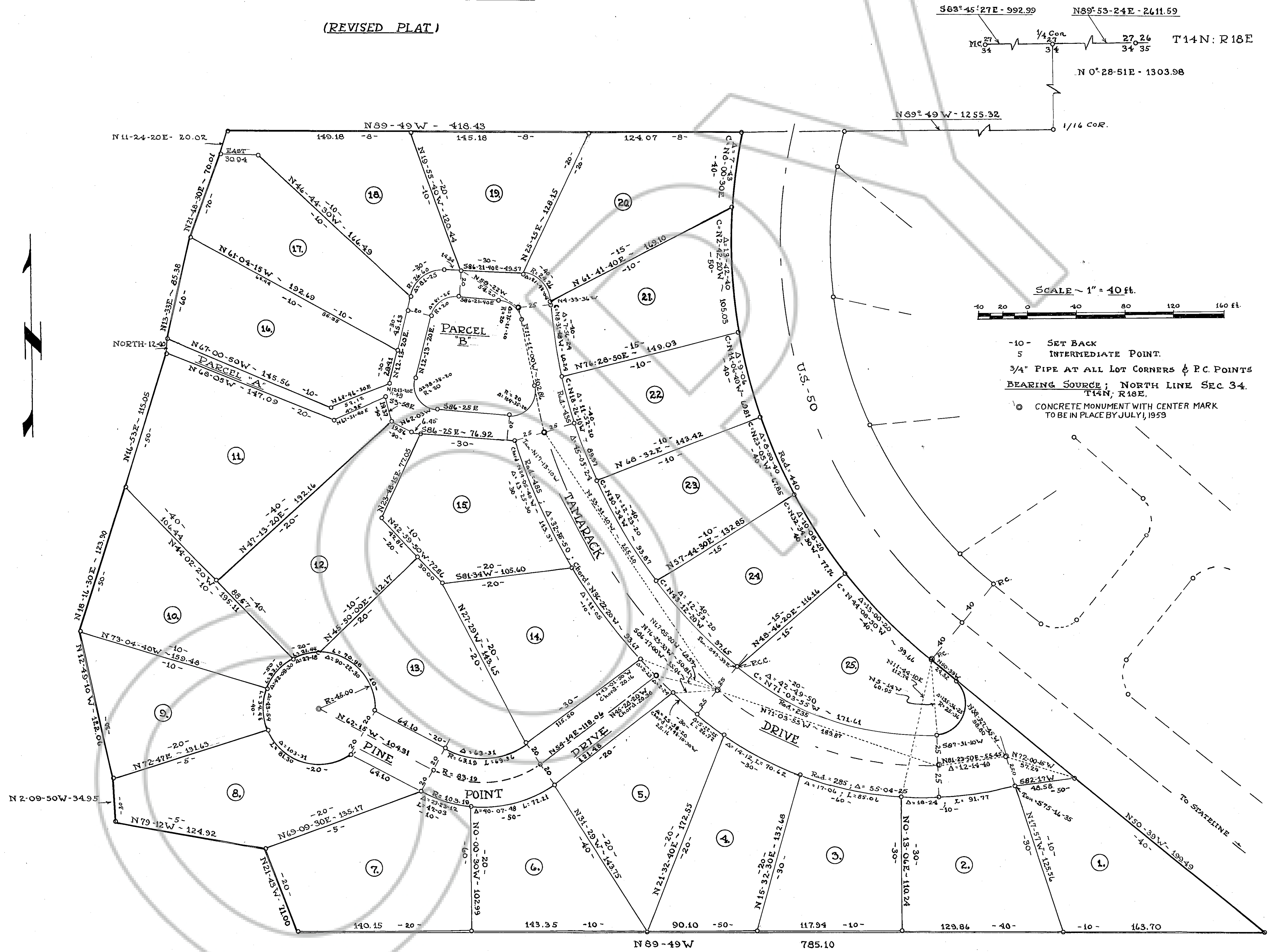
DRAWING NUMBER  
PLAN HOLD CORPORATION • IRVINE, CALIFORNIA  
RECORDED BY NUMBER 07234

DRAWING NUMBER  
PLAN HOLD CORPORATION • IRVINE, CALIFORNIA  
RECORDED BY NUMBER 07234

# LAKERIDGE ESTATES NO. 1

## DOUGLAS COUNTY - NEVADA

(REVISED PLAT)



- 10- SET BACK
- 5 INTERMEDIATE POINT.
- 3/4" PIPE AT ALL LOT CORNERS & P.C. POINTS
- BEARING SOURCE; NORTH LINE SEC. 34. T14N, R18E.
- ⊙ CONCRETE MONUMENT WITH CENTER MARK TO BE IN PLACE BY JULY, 1953