

DRAWING NUMBER
Skyland #3
Sheet 1 of 3
PLAN HOLD CORPORATION • IRVINE, CALIFORNIA
RECORD BY NUMBER 0204

DRAWING NUMBER
PLAN HOLD CORPORATION • IRVINE, CALIFORNIA
RECORD BY NUMBER 0204

DRAWING NUMBER
PLAN HOLD CORPORATION • IRVINE, CALIFORNIA
RECORD BY NUMBER 0204

DRAWING NUMBER
PLAN HOLD CORPORATION • IRVINE, CALIFORNIA
RECORD BY NUMBER 0204

SKYLAND NO. 3

REVIEWED, APPROVED AND RECOMMENDED TO THE BOARD OF COUNTY COMMISSIONERS OF DOUGLAS COUNTY BY THE DOUGLAS COUNTY PLANNING COMMISSION ON THIS THE 2ND DAY OF JANUARY 1960.

Wilfred Brown
CHAIRMAN

APPROVED AND ACCEPTED THIS 5TH DAY OF Feb. 1960 BY THE BOARD OF COUNTY COMMISSIONERS OF DOUGLAS COUNTY, NEVADA, SUBJECT TO THE STIPULATION THAT BY ADOPTING SAME THE COUNTY HEREBY ASSUMES NO RESPONSIBILITY FOR THE PUBLIC WAYS SHOWN HEREON. THE COUNTY COMMISSIONERS HOWEVER RESERVE THE RIGHT TO ACCEPT THE STREETS AS SHOWN HEREON AT ANY FUTURE DATE.

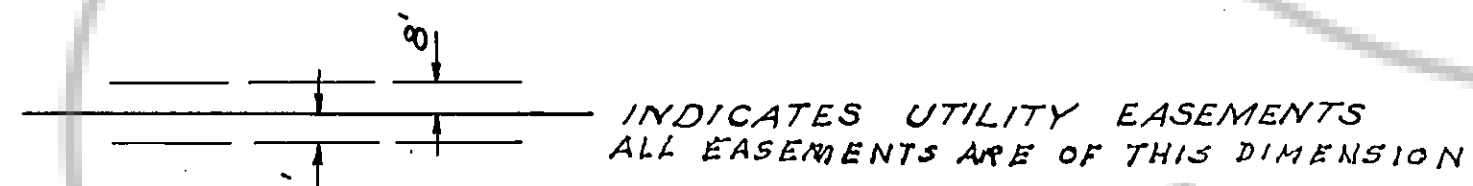
Marvin Sotelmeyer CHAIRMAN
W.H. Kessler MEMBER
Alfred A. Plimpton MEMBER

ATTESTED
Ernest W. Shraw
COUNTY CLERK

THE UNDERSIGNED HEREBY CERTIFIES THAT HE IS THE DULY APPOINTED COUNTY ENGINEER OF DOUGLAS COUNTY, NEVADA. THAT HE HAS EXAMINED THE PLAT TO WHICH THIS CERTIFICATE IS ATTACHED, THAT THE SUBDIVISION AS SHOWN THEREON IS SUBSTANTIALLY THE SAME AS IT APPEARED ON THE TENTATIVE MAP AND ANY APPROVED ALTERATIONS THEREOF, THAT ALL PROVISIONS OF THE LAWS OF THE STATE OF NEVADA AND ORDINANCES OF THE COUNTY OF DOUGLAS APPLICABLE AT THE TIME OF APPROVAL OF THE TENTATIVE MAP HAVE BEEN COMPLIED WITH AND THAT HE IS SATISFIED SAID MAP IS TECHNICALLY CORRECT.

J. W. [Signature]
COUNTY ENGINEER

BASIS OF BEARINGS:
SKYLAND SUBDIVISION NO. 1
AND SECTION LINE COMMON TO SEC. 3, T. 13 N., R. 18 E.
& SEC. 34, T. 14 N., R. 18 E., M.D.B. & M. BEARS N89°58'W



INDICATES STREET LINE MONUMENTS TO BE SET BY PRIOR TO RELEASE OF BOND.
ALL LOT CORNERS, B.C. & E.C. NOT OTHERWISE MONUMENTED
WILL BE 1/2" IRON PINS.

STATE OF NEVADA
COUNTY OF DOUGLAS S.S.

THIS IS TO CERTIFY THAT THE UNDERSIGNED, STOCKTON GARDEN HOMES INC. IS THE OWNER OF THE TRACT OF LAND REPRESENTED ON THIS MAP OR PLAT AND THAT THE SAME IS EXECUTED IN COMPLIANCE WITH AND SUBJECT TO THE PROVISIONS OF CHAPTER 278 OF NEVADA REVISED STATUTES AUTHORIZING OWNERS OF LAND TO LAY OUT AND PLAT SUCH LANDS INTO LOTS, BLOCKS, STREETS AND PUBLIC PLACES AND PROVIDING FOR THE APPROVAL AND FILING OF MAPS OR PLATS THEREOF. APPROVED JANUARY 25, 1957, AS AMENDED, AND THAT THE STREETS AND AVENUES AS SHOWN ON THIS MAP OR PLAT ARE HEREBY DEDICATED AND SET APART TO BE USED AS PUBLIC THOROUGHFARES FOREVER.

IN WITNESS WHEREOF, THE SAID STOCKTON GARDEN HOMES INC. HAS CAUSED ITS NAME TO BE SIGNED AND ITS CORPORATE SEAL HERETO AFFIXED BY ITS DULY ELECTED OFFICER

STOCKTON GARDEN HOMES INC. - BY *John Cheney*
SECRETARY-TREASURER

STATE OF NEVADA
COUNTY OF DOUGLAS S.S.

ON THIS 7TH DAY OF Feb. 1959 PERSONALLY APPEARED BEFORE ME, JOHN CHENEY, KNOWN TO ME TO BE THE SECRETARY-TREASURER OF THE CORPORATION THAT EXECUTED THE FOREGOING INSTRUMENT AND UPON OATH DID DEPOSE THAT HE IS THE OFFICER OF SAID CORPORATION AS ABOVE DESIGNATED; THAT THE SIGNATURES TO SAID INSTRUMENT WERE MADE BY THE OFFICERS OF SAID CORPORATION AS INDICATED AFTER SAID SIGNATURES; AND THAT SAID CORPORATION EXECUTED THE SAID INSTRUMENT FREELY AND VOLUNTARILY AND FOR THE USES AND PURPOSES THEREIN MENTIONED.

Ernest W. Shraw
DOUGLAS COUNTY CLERK

STATE OF NEVADA
COUNTY OF DOUGLAS S.S.

I, ROBERT H. BARRETT, DO HEREBY CERTIFY THAT THIS PLAT IS A TRUE AND ACCURATE MAP OF THE LANDS REPRESENTED THEREON, SURVEYED BY ME AND LAYED OUT INTO LOTS, BLOCKS, STREETS AND PUBLIC PLACES AT THE INSTANCE OF STOCKTON GARDEN HOMES INC., THAT THE LOCATION OF SAID LOTS, BLOCKS, STREETS AND PUBLIC PLACES HAS BEEN DEFINITELY ESTABLISHED AND PERPETUATED IN ACCORDANCE WITH THE LAW AS SHOWN HEREON, THAT THE LANDS AS SHOWN HEREON BEING A SUBDIVISION OF THE WESTERLY PORTION OF LOTS 3 AND 4 AND THE SE 1/4 OF THE NW 1/4 OF SECTION 3, T. 13 N., R. 18 E., M.D.B. & M. AND THAT THE SURVEY WAS COMPLETED ON THE 31 DAY OF OCTOBER 1958. THIS PLAT INCLUDES A RE-SUBDIVISION OF LOTS 45 & 46 IN SKYLAND SUBDIVISION NO. 1.

Robert H. Barrett
R.E. No. 288

18680
FILE NO. FILE NO.

FILED FOR RECORD AT THE REQUEST OF STOCKTON GARDEN HOMES INC. February 24 1960 AT 05 MIN. PAST 2 O'CLOCK P.M. RECORDS OF DOUGLAS COUNTY, NEV.

FEE \$5.00 pd.

Elmer D. Schacht
RECORDER

BY _____

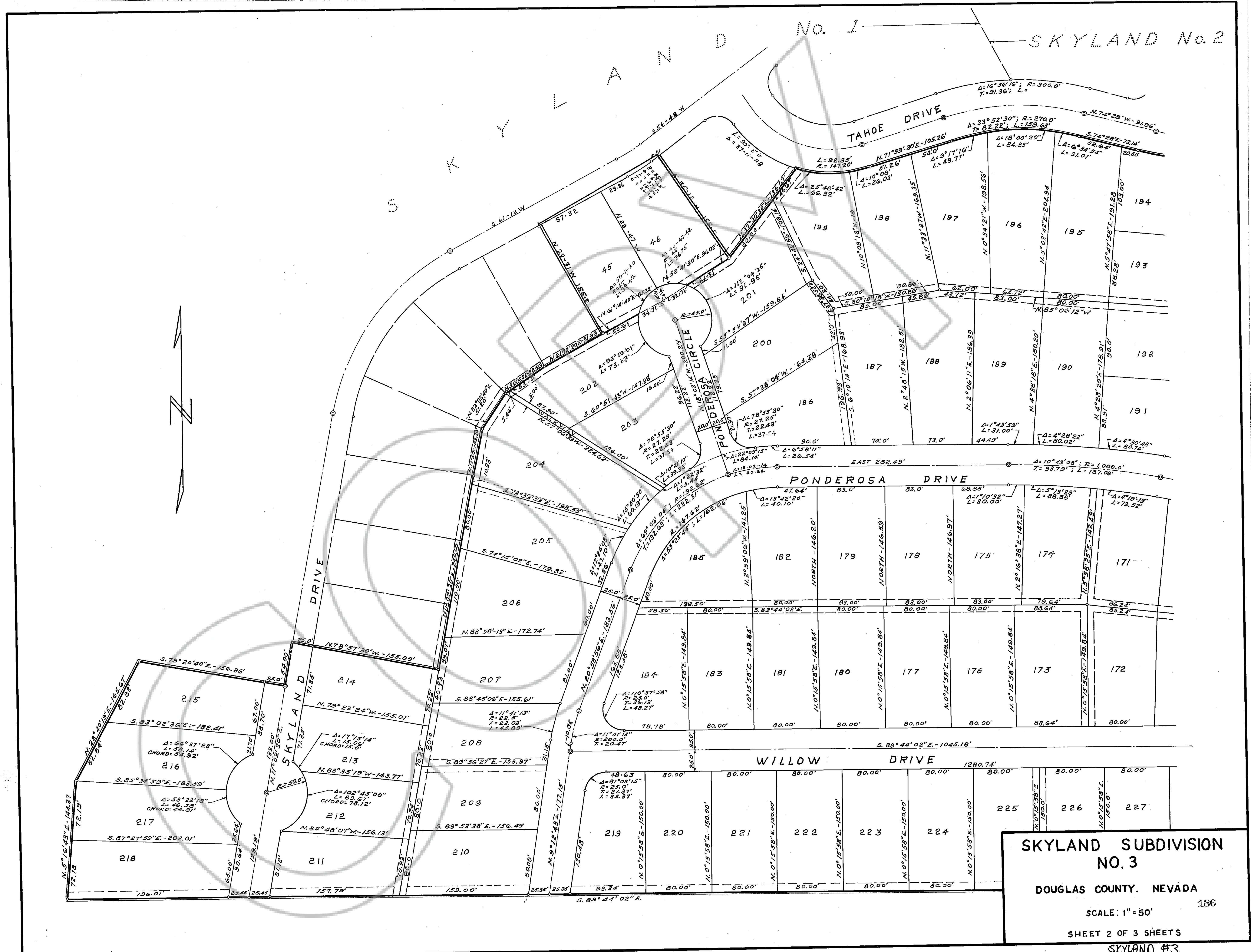
SKYLAND SUBDIVISION
NO. 3
DOUGLAS COUNTY, NEVADA
SCALE: 1" = 50'
SHEET 1 OF 3 SHEETS
SKYLAND #3

DRAWING NUMBER
Skyland # 3
Sheet 2 of 3
PLAN HOLD CORPORATION • IRVINE, CALIFORNIA
REGISTERED NUMBER 00004

DRAWING NUMBER
PLAN HOLD CORPORATION • IRVINE, CALIFORNIA
REGISTERED NUMBER 00004

DRAWING NUMBER
PLAN HOLD CORPORATION • IRVINE, CALIFORNIA
REGISTERED NUMBER 00004

DRAWING NUMBER
PLAN HOLD CORPORATION • IRVINE, CALIFORNIA
REGISTERED NUMBER 00004



**SKYLAND SUBDIVISION
NO. 3**
DOUGLAS COUNTY, NEVADA
SCALE: 1" = 50'
SHEET 2 OF 3 SHEETS
SKYLAND #3

DRAWING NUMBER
 Skyland #3
 Sheet 3 of 3
 PLANNED DEVELOPMENT • IRVINE, CALIFORNIA
 PREPARED BY: [unreadable]

DRAWING NUMBER
 PLANNED DEVELOPMENT • IRVINE, CALIFORNIA
 PREPARED BY: [unreadable]

DRAWING NUMBER
 PLANNED DEVELOPMENT • IRVINE, CALIFORNIA
 PREPARED BY: [unreadable]

DRAWING NUMBER
 PLANNED DEVELOPMENT • IRVINE, CALIFORNIA
 PREPARED BY: [unreadable]



SKYLAND SUBDIVISION
 NO. 3
 DOUGLAS COUNTY, NEVADA
 SCALE: 1" = 50'
 SHEET 3 OF 3 SHEETS
 SKYLAND #3