

DRAWING NUMBER
Gardnerville Ranchos #2
Sheet 1 of 6
PLANT HOLD CORPORATION • IRVINE, CALIFORNIA
ENGINEER BY NUMBER 1004

DRAWING NUMBER
Gardnerville Ranchos #2
Sheet 1 of 6
PLANT HOLD CORPORATION • IRVINE, CALIFORNIA
ENGINEER BY NUMBER 1004

DRAWING NUMBER
Gardnerville Ranchos #2
Sheet 1 of 6
PLANT HOLD CORPORATION • IRVINE, CALIFORNIA
ENGINEER BY NUMBER 1004

DRAWING NUMBER
Gardnerville Ranchos #2
Sheet 1 of 6
PLANT HOLD CORPORATION • IRVINE, CALIFORNIA
ENGINEER BY NUMBER 1004

GARDNERVILLE RANCHOS UNIT No 2

PORTION OF SECTIONS 9, 15 AND 16 T-12-N R-20-E
M. D. B. & M. DOUGLAS COUNTY, NEVADA

SCALE 1"=100' MAY 1965
ENGINEERS LTD. INC. ZEPHYR COVE, NEVADA.
CIVIL ENGINEERING SURVEYING
BASIS OF BEARING OF N 1° 51' 47" W OF THE EAST LINE OF LOT 33 OF GARDNERVILLE RANCHOS
UNIT No 1 RECORDS OF DOUGLAS COUNTY, NEVADA WAS USED AS A BASIS OF BEARING SHOWN ON
THIS MAP.

KNOW ALL MEN BY THESE PRESENTS
THAT GARDNERVILLE RANCHOS GENERAL IMPROVEMENT DISTRICT
DOES HEREBY REPRESENT THAT
THEY ARE THE OWNERS OF THE LAND DESCRIBED IN THIS PLAT CONSISTING
OF TWO SHEETS; THAT THEY APPROVE AND ACCEPT THIS PLAT OF SAID
LANDS AS SHOWN IN ACCORDANCE WITH AND FOR THE USES AND
PURPOSES SET FORTH IN NEVADA REVISED STATUTES 116 AND 278 AND
SUBSEQUENT AMENDMENTS THEREIN AND DOUGLAS COUNTY ORDINANCE
106, AND DOES HEREBY DEDICATE TO THE PUBLIC USE THOSE PORTIONS OF
SAID LANDS DESIGNATED ON THIS PLAT AS STREETS AND OTHER PUBLIC
WAYS SHOWN HEREON; AND ALSO OFFER FOR DEDICATION AND DO
HEREBY DEDICATE FOR PARTICULAR PURPOSES THE FOLLOWING; RIGHTS
OF WAY AND EASEMENTS FOR WATER, GAS, SEWER AND DRAINAGE
PIPES; AND FOR POLES, ANCHORS AND GUYS AND OVERHEAD AND
UNDERGROUND WIRES AND CONDUITS FOR ELECTRIC AND TELEPHONE
SERVICE, TOGETHER WITH ANY AND ALL APPURTENANCES APPERTAINING
THEREON, OVER, ACROSS AND UNDER THOSE STRIPS OF LAND
LYING BETWEEN THE REAR OR SIDE LINES OF LOTS OR BOTH, AND
THE LINES SHOWN HEREON AND DESIGNATED "PUBLIC UTILITY
EASEMENTS" LINES AND RIGHTS OF WAY AND EASEMENTS FOR POLES,
ANCHORS AND GUYS AND OVERHEAD AND UNDERGROUND WIRES AND
CONDUITS FOR ELECTRIC AND TELEPHONE SERVICE TOGETHER WITH ANY
AND ALL APPURTENANCES APPERTAINING THERETO ON, OVER, ACROSS
AND UNDER STRIPS OF LAND 10 FEET IN WIDTH, CONTIGUOUS TO ANY
LOT LINE, WHICH IS CONTIGUOUS TO ANY STREET OR OTHER PUBLIC
WAY AND WITHIN SUCH LOTS AND RIGHTS OF WAY AND EASEMENTS FOR
POLES, ANCHORS AND GUYS WITHIN THOSE STRIPS OF LAND LYING 10
FEET ON EITHER SIDE OF ALL SIDE LOT LINES

BY: C.E. Swift BY: C.N. Swift
PRESIDENT SECRETARY - TREASURER

STATE OF NEVADA } S.S.
COUNTY OF DOUGLAS }
ON THIS 20th DAY OF MAY IN THE YEAR
1965 BEFORE ME, EARNHART W. THREAN, COUNTY CLERK IN AND FOR
THE COUNTY OF DOUGLAS, STATE OF NEVADA, PERSONALLY APPEARED
C.E. Swift AND C.N. Swift KNOWN TO ME TO BE
THE PRESIDENT AND SECRETARY-TREASURER RESPECTIVELY OF THE
CORPORATION THAT EXECUTED THE FOREGOING INSTRUMENT, AND UPON
OATH DID DEPOSE THAT THEY ARE THE OFFICERS OF SAID
CORPORATION AS ASSIGNED, DESIGNATED THAT THEY ARE ACQUAINTED
WITH THE SEAL OF SAID CORPORATION AND THAT THE SEAL AFFIXED
TO SAID INSTRUMENT IS THE SEAL OF SAID CORPORATION, THAT THE
SIGNATURES TO SAID INSTRUMENT WERE MADE BY THE OFFICERS
OF SAID CORPORATION AS INDICATED AFTER SAID SIGNATURES
AND THAT SAID CORPORATION EXECUTED SAID INSTRUMENT FREELY
AND VOLUNTARILY FOR THE USES AND PURPOSES THEREIN
MENTIONED.

IN WITNESS WHEREOF I HAVE HEREBY SET MY HAND
AND AFFIXED MY OFFICIAL SEAL AT MY OFFICE IN SAID COUNTY
THE DAY AND THE YEAR IN THIS CERTIFICATE FIRST ABOVE WRITTEN
Earhart W Thran
COUNTY CLERK IN AND FOR THE COUNTY OF DOUGLAS,
STATE OF NEVADA

THE EASEMENTS ON THIS MAP HAVE BEEN CHECKED AND
APPROVED BY THE CALIFORNIA INTERSTATE TELEPHONE COMPANY
AND SIERRA PACIFIC POWER COMPANY:

CALIFORNIA INTERSTATE TELEPHONE COMPANY
SIERRA PACIFIC POWER COMPANY
BY: Thomas BY: L.C. Shannon

I, EARL SWAN, DO HEREBY CERTIFY THAT THIS PLAT IS A TRUE
AND ACCURATE MAP OF THE LAND SURVEYED BY ME AND LAID OUT
INTO BLOCKS, LOTS AND STREETS AT THE INSTANCES OF GARDNERVILLE
RANCHOS GENERAL IMPROVEMENT DISTRICT THAT THE LOCATION OF THE LOTS AND
STREETS HAS BEEN DEFINITELY ESTABLISHED IN STRICT ACCORDANCE
WITH THE LAW AND AS SHOWN HEREON; THAT THE BLOCKS, LOTS AND
STREETS SHOWN HEREON ARE SITUATED WHOLLY WITHIN SECTIONS 9, 15 AND 16,
TOWNSHIP 12 NORTH RANGE 20 EAST, MOUNT DIABLO BASE AND
MERIDIAN, THAT THE SURVEY WAS MADE DURING APRIL, 1965 THAT
THE MONUMENTS HAVE BEEN COMPLIED TO ENABLE THE SURVEY TO BE
RETRACED; MONUMENTS TO BE SET UPON COMPLETION OF PAVING

Earl Swan
EARL SWAN L.S. 1035

I, Robert C. Downer ENGINEER FOR THE
COUNTY OF DOUGLAS, STATE OF NEVADA, HEREBY CERTIFY THAT I HAVE
EXAMINED THIS MAP ENTITLED GARDNERVILLE RANCHOS UNIT No 2 AND THAT
SAID SUBDIVISION IS SUBSTANTIALLY AS IT APPEARED ON THE
TENTATIVE MAP; THAT ALL OF THE CONDITIONS OF STATE LAWS AND
LOCAL ORDINANCES HAVE BEEN COMPLIED WITH AND I AM SATISFIED
THE SAME IS TECHNICALLY CORRECT
Robert C. Downer
ENGINEER FOR THE COUNTY OF DOUGLAS, STATE OF
NEVADA

THIS SUBDIVISION PLAN IS HEREBY APPROVED WITH REGARD TO
COMPLIANCE WITH HEALTH DEPARTMENT REGULATIONS GOVERNING LOT
SIZES. THIS DOES NOT CONSTITUTE APPROVAL OF CERTAIN LOTS
THAT MAY BE FOUND UPON CLOSE EXAMINATION, AT A LATER DATE
TO BE UNSUITABLE FOR PRIVATE SEWAGE DISPOSAL SYSTEM.

M. N. Niles
NEVADA STATE HEALTH DEPARTMENT

STATE OF NEVADA } S.S.
COUNTY OF DOUGLAS }
I, EARNHART W. THREAN, COUNTY CLERK IN AND FOR THE
COUNTY OF DOUGLAS, STATE OF NEVADA, DO HEREBY CERTIFY THAT
THE ABOVE AND FOREGOING PLAT ENTITLED "GARDNERVILLE RANCHOS
UNIT No 2" WAS PRESENTED TO THE BOARD OF COMMISSIONERS
OF DOUGLAS COUNTY, AT A REGULAR MEETING THEREOF, HELD
ON THE 20th DAY OF MAY 1965, AND THAT SAID
BOARD OF COMMISSIONERS DID THEREON BY RESOLUTION DULY
PASSED AND ADOPTED AT SAID MEETING APPROVE AND ACCEPT
SAID MAP, BUT DID NOT ACCEPT FOR PUBLIC USE ANY OF THE
STREETS, ROADS OR EASEMENTS SHOWN THEREON, BUT DID
RESERVE THE RIGHT TO ACCEPT SAID STREETS, ROADS AND
EASEMENTS AT ANY FUTURE DATE.
I FURTHER CERTIFY THAT ALL BONDS AS REQUIRED BY LAW
TO ACCOMPANY THE WITHIN MAP HAVE BEEN APPROVED BY
SAID BOARD OF COMMISSIONERS AND FILED IN MY OFFICE.
IN WITNESS WHEREOF, I HAVE HEREBY SET MY HAND
THIS 20th DAY OF MAY 1965
Earhart W Thran
COUNTY CLERK IN AND FOR THE COUNTY OF DOUGLAS
STATE OF NEVADA

REVIEWED, APPROVED AND RECOMMENDED TO THE COUNTY
PLANNING COMMISSION BY THE DOUGLAS COUNTY
PLANNING COMMISSION ON THIS 17th DAY OF MAY 1965
L. M. Dorda
CHAIRMAN - PLANNING COMMISSION DOUGLAS COUNTY
STATE OF NEVADA

28300
FILED FOR RECORD AT THE REQUEST OF TAHOE TITLE
GUARANTY CO. ON THE 1st DAY OF JUNE 1965, AT
22 MINUTES PAST 9 O'CLOCK
RECORDED IN BOOK 1 OF MAPS AT PAGE
RECORDS OF DOUGLAS COUNTY, NEVADA
Earhart W Thran County Recorder

THIS IS TO CERTIFY GARDNERVILLE RANCHOS GENERAL IMPROVEMENT DISTRICT
IS THE ONLY PARTY HAVING RECORD TITLE INTEREST IN THE TRACT OF
LAND REPRESENTED ON THIS MAP.

TAHOE TITLE GUARANTY COMPANY
BY: James Oliver

GARDNERVILLE RANCHOS UNIT N^o 2

See Sheet 3

SHEET 2 OF 3

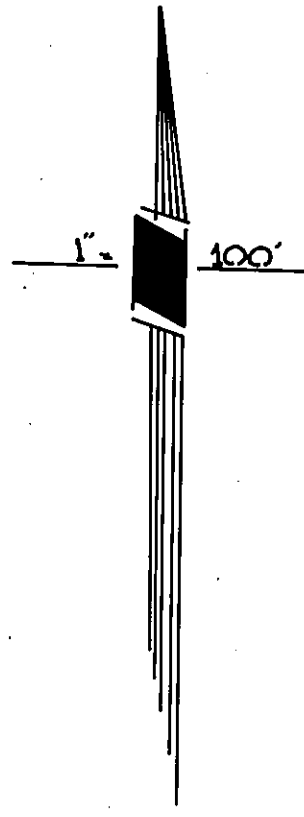
DRAWING NUMBER
Gardnerville Ranchos # 2
Sheet 2 of 3

DRAWING NUMBER

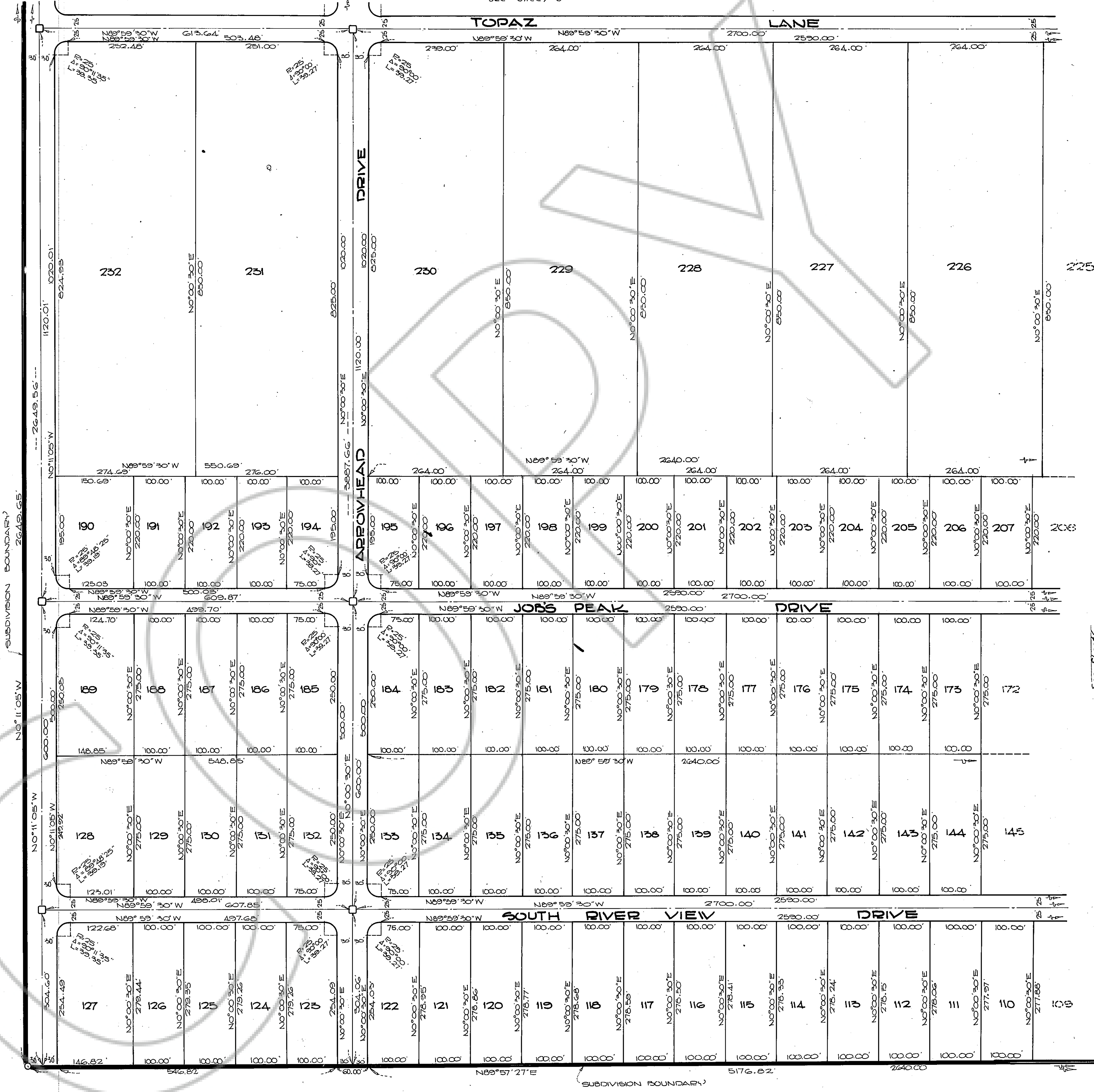
DRAWING NUMBER

DRAWING NUMBER

PLAN HOLD CORPORATION • IRVINE, CALIFORNIA
REGISTERED PROFESSIONAL ARCHITECT
REGISTERED PROFESSIONAL LANDSCAPE ARCHITECT
REGISTERED PROFESSIONAL CIVIL ENGINEER
REGISTERED PROFESSIONAL ELECTRICAL ENGINEER
REGISTERED PROFESSIONAL MECHANICAL ENGINEER
REGISTERED PROFESSIONAL PLUMBING ENGINEER
REGISTERED PROFESSIONAL SURVEYOR



LEGEND
□ INDICATES MONUMENT



See Sheet 6

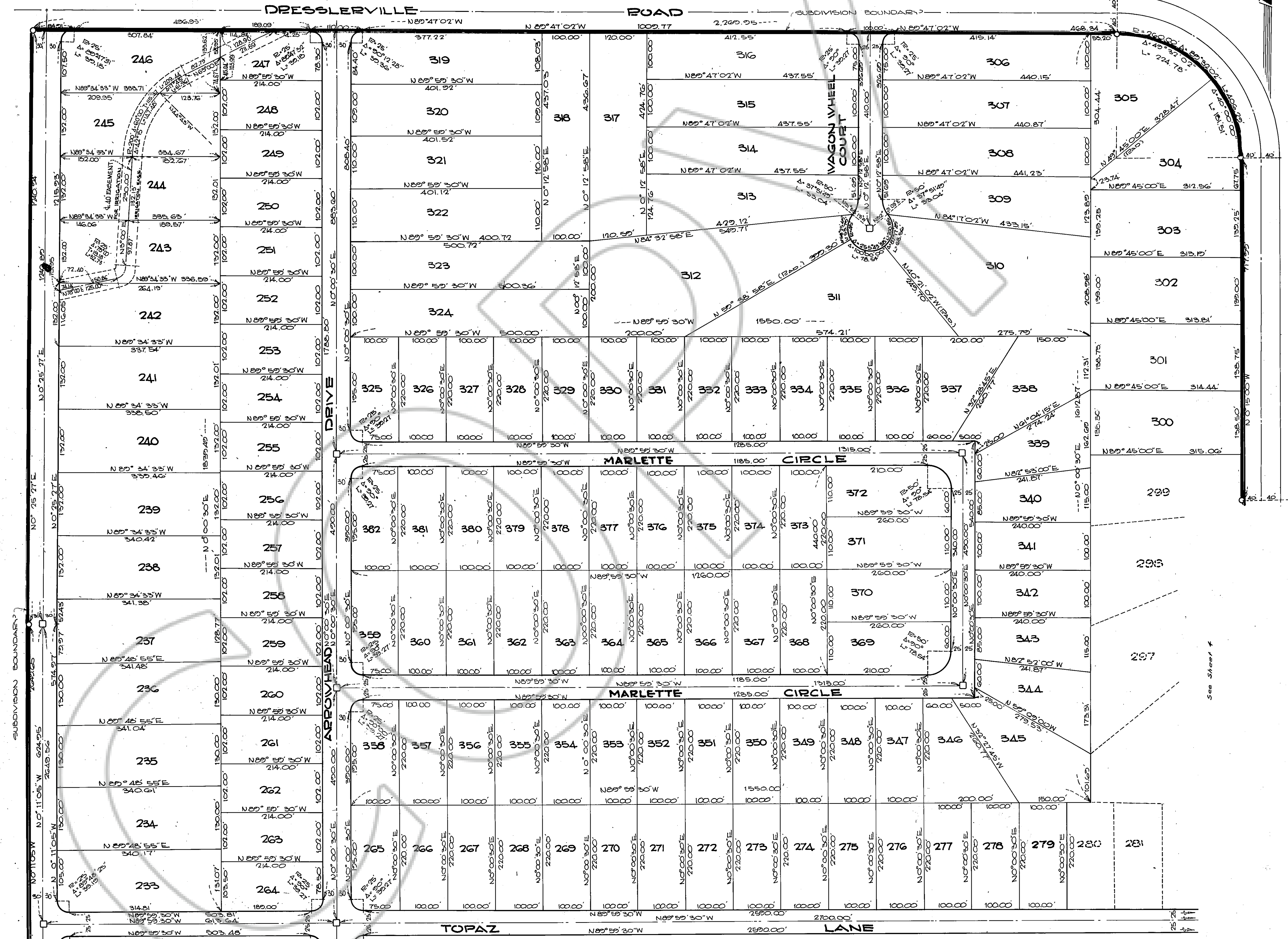
GARDNERVILLE RANCHOS UNIT # 2

DRAWING NUMBER
Gardnerville Ranchos #2
Sheet 3 of 8
PLAN HOLD CORPORATION • IRVINE, CALIFORNIA
REGISTERED PROFESSIONAL ARCHITECT

DRAWING NUMBER
PLAN HOLD CORPORATION • IRVINE, CALIFORNIA
REGISTERED PROFESSIONAL ARCHITECT

DRAWING NUMBER
PLAN HOLD CORPORATION • IRVINE, CALIFORNIA
REGISTERED PROFESSIONAL ARCHITECT

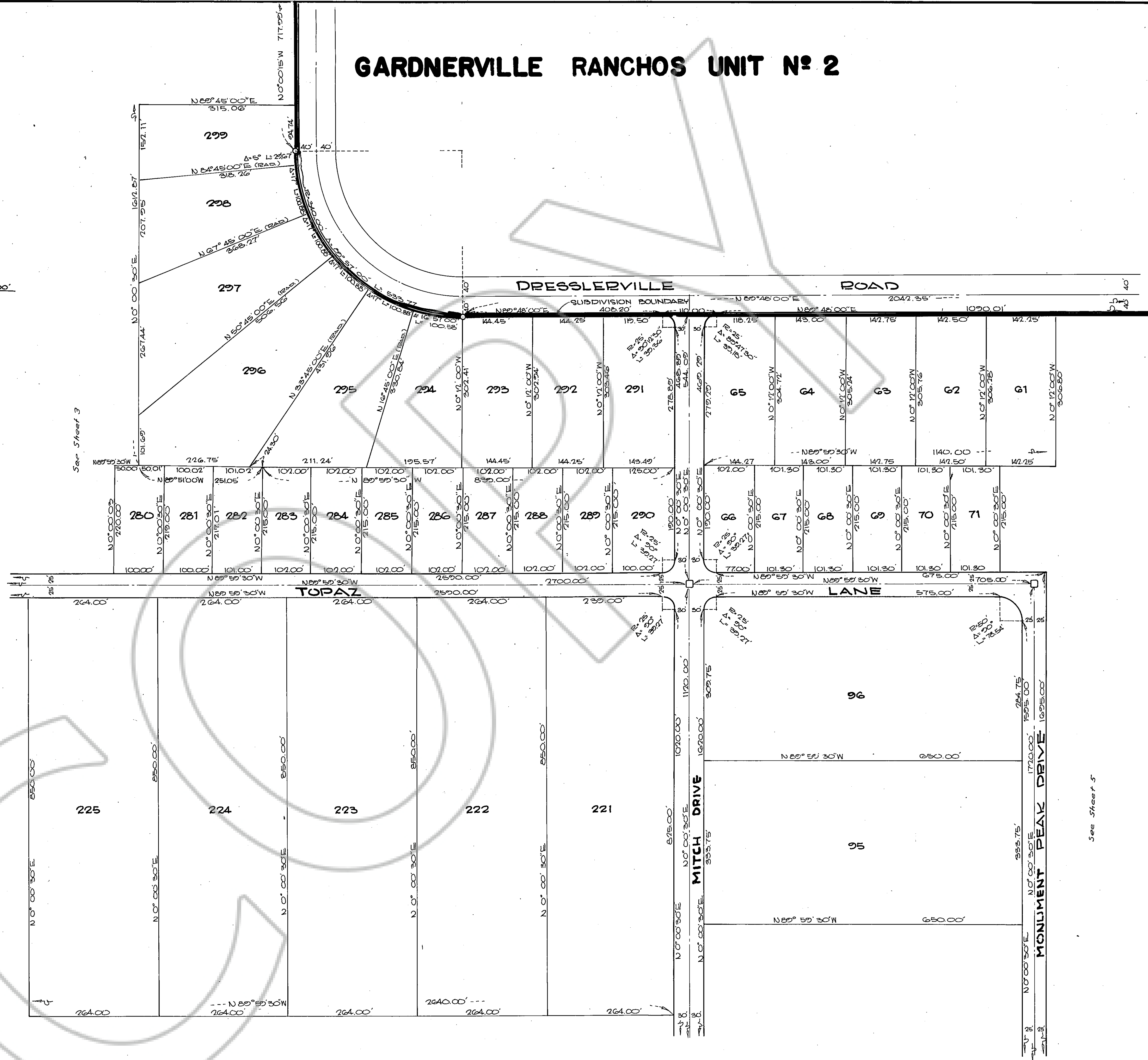
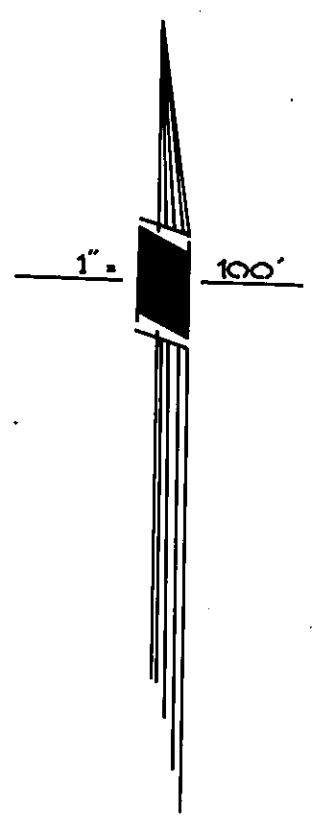
DRAWING NUMBER
PLAN HOLD CORPORATION • IRVINE, CALIFORNIA
REGISTERED PROFESSIONAL ARCHITECT



See Sheet 2

See Sheet 4

GARDNERVILLE RANCHOS UNIT N^o 2



See Sheet 3

See Sheet 6

See Sheet 5

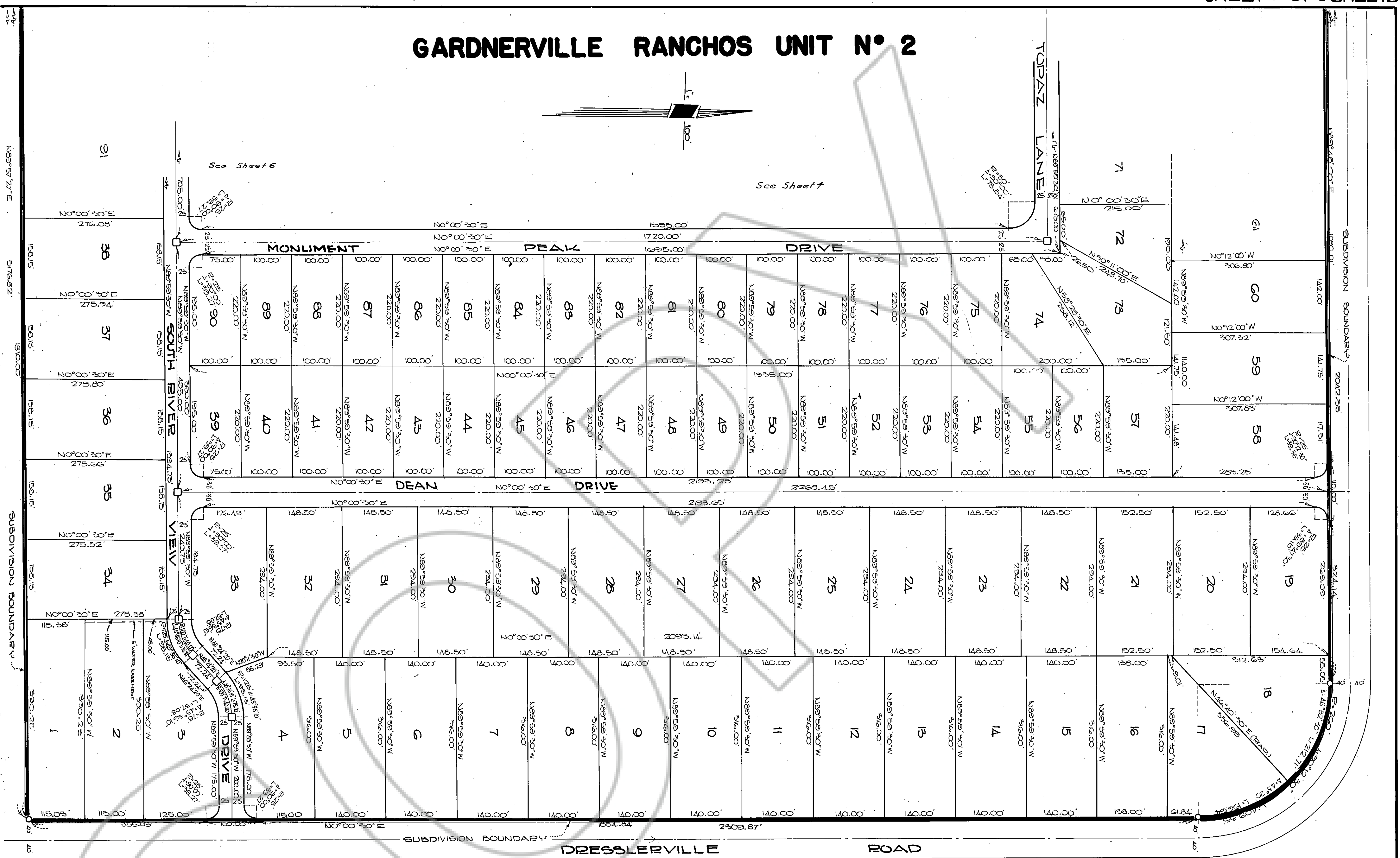
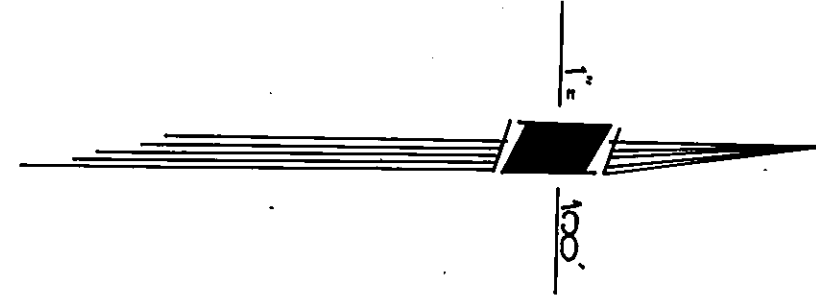
DRAWING NUMBER
Gardnerville Ranchos #2
 SHEET 7 OF 6
 PLAN HOLD CORPORATION • PRIVATE CALIFORNIA
 RECORD BY NUMBER OTHER

DRAWING NUMBER
 PLAN HOLD CORPORATION • PRIVATE CALIFORNIA
 RECORD BY NUMBER OTHER

DRAWING NUMBER
 PLAN HOLD CORPORATION • PRIVATE CALIFORNIA
 RECORD BY NUMBER OTHER

DRAWING NUMBER
 PLAN HOLD CORPORATION • PRIVATE CALIFORNIA
 RECORD BY NUMBER OTHER

GARDNERVILLE RANCHOS UNIT N° 2



DRAWING NUMBER
Gardnerville Ranchos #2
Sheet 5 of 6
FLAT HOLD CORPORATION • IRVINE, CALIFORNIA
REGISTERED PROFESSIONAL ARCHITECT

DRAWING NUMBER
FLAT HOLD CORPORATION • IRVINE, CALIFORNIA
REGISTERED PROFESSIONAL ARCHITECT

DRAWING NUMBER
FLAT HOLD CORPORATION • IRVINE, CALIFORNIA
REGISTERED PROFESSIONAL ARCHITECT

DRAWING NUMBER
FLAT HOLD CORPORATION • IRVINE, CALIFORNIA
REGISTERED PROFESSIONAL ARCHITECT

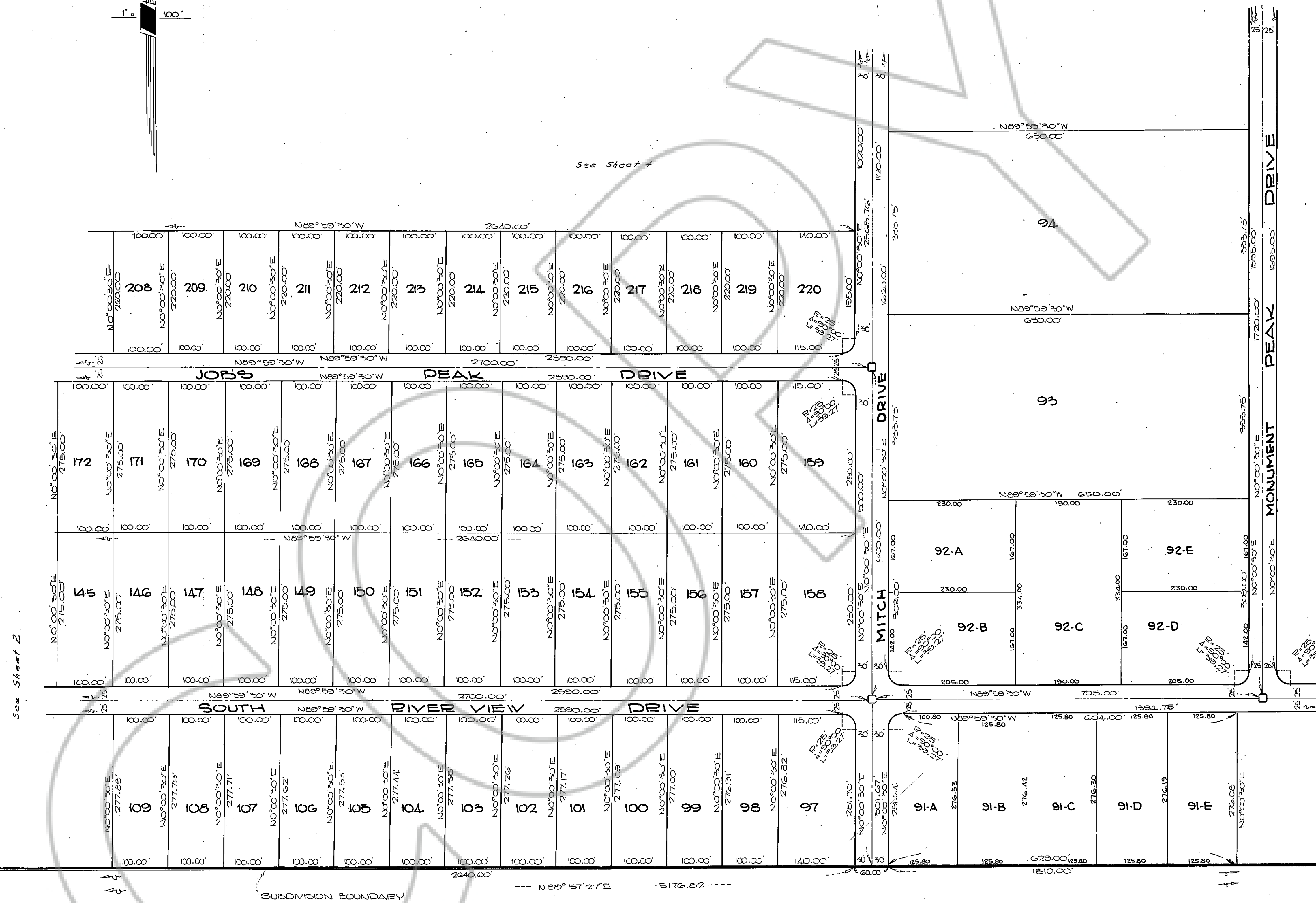
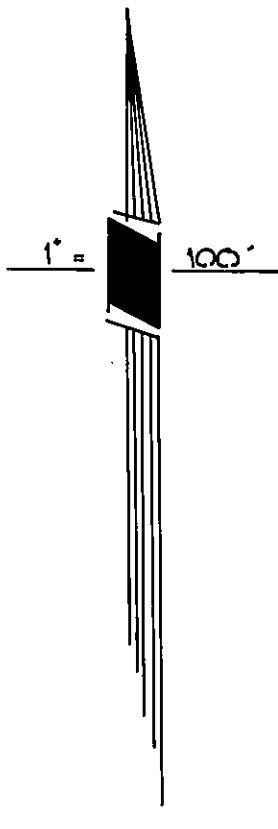
GARDNERVILLE RANCHOS UNIT N^o 2

DRAWING NUMBER
Gardnerville Ranchos #2
Sheet 6 of 6

DRAWING NUMBER
PLAN HOLD CORPORATION • IRVINE, CALIFORNIA
REGISTERED PROFESSIONAL ARCHITECT

DRAWING NUMBER
PLAN HOLD CORPORATION • IRVINE, CALIFORNIA
REGISTERED PROFESSIONAL ARCHITECT

DRAWING NUMBER
PLAN HOLD CORPORATION • IRVINE, CALIFORNIA
REGISTERED PROFESSIONAL ARCHITECT



See Sheet 2

See Sheet 4

See Sheet 5