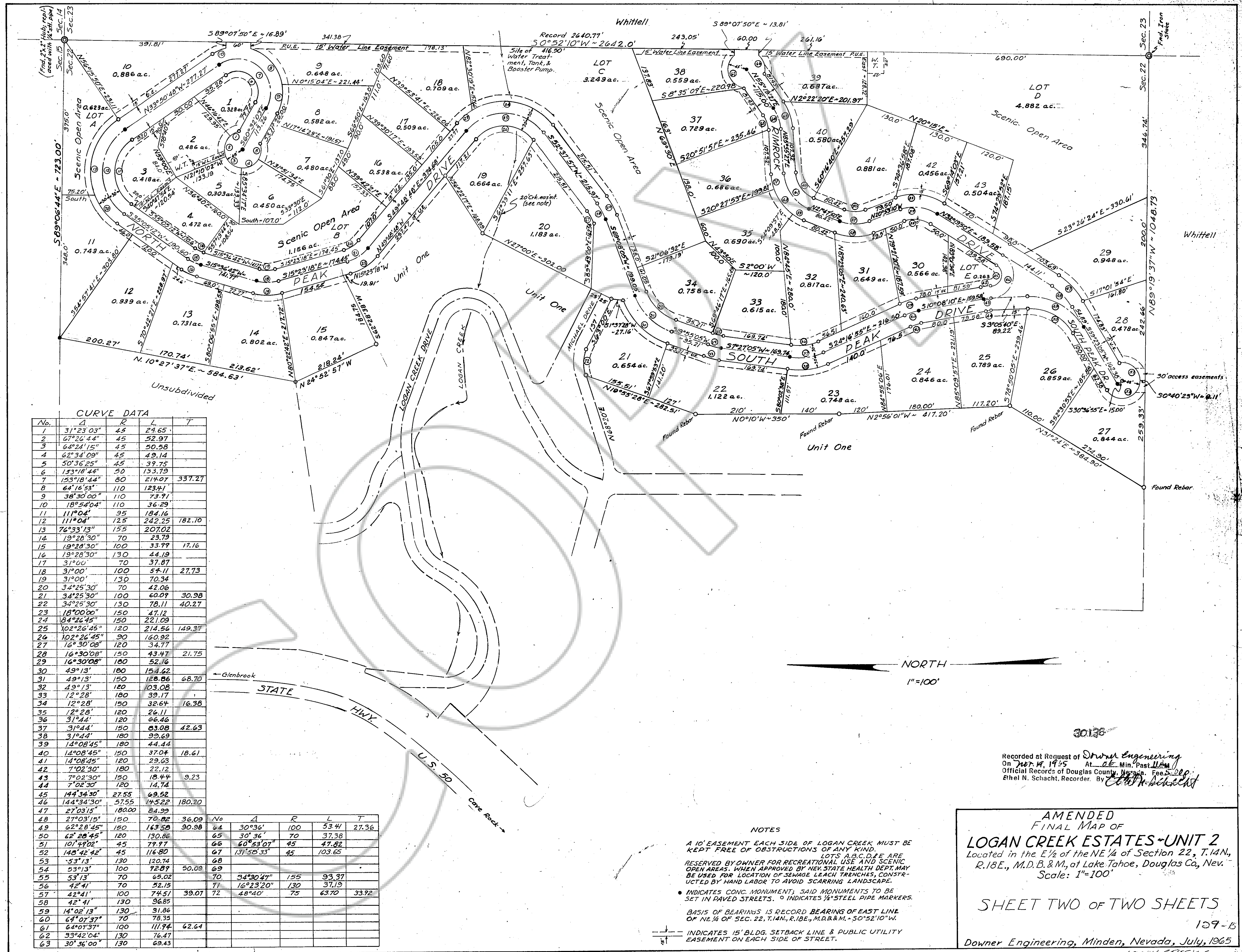


DRAWING NUMBER
Logan Creek
 Estate #2 Amd.
 PLAN HOLD CORPORATION • IRVINE, CALIFORNIA
 SURVEY BY NUMBER 0704

DRAWING NUMBER
 PLAN HOLD CORPORATION • IRVINE, CALIFORNIA
 SURVEY BY NUMBER 0704

DRAWING NUMBER
 PLAN HOLD CORPORATION • IRVINE, CALIFORNIA
 SURVEY BY NUMBER 0704

DRAWING NUMBER
 PLAN HOLD CORPORATION • IRVINE, CALIFORNIA
 SURVEY BY NUMBER 0704



CURVE DATA

No.	A	R	L	T
1	31°23'03"	45	24.65	
2	67°26'44"	45	52.97	
3	64°24'15"	45	50.58	
4	62°34'09"	45	49.14	
5	50°36'25"	45	39.75	
6	153°18'44"	50	133.79	
7	153°18'44"	80	214.07	337.27
8	64°16'53"	110	123.41	
9	38°30'00"	110	73.91	
10	18°54'04"	110	36.29	
11	111°04'	95	184.16	
12	111°04'	125	242.25	182.10
13	76°33'13"	155	207.02	
14	19°28'30"	70	23.79	
15	19°28'30"	100	33.99	17.16
16	19°28'30"	130	44.19	
17	31°00'	70	37.87	
18	31°00'	100	54.11	27.73
19	31°00'	130	70.34	
20	34°25'30"	70	42.06	
21	34°25'30"	100	60.09	30.98
22	34°25'30"	130	78.11	40.27
23	18°00'00"	150	47.12	
24	184°26'45"	150	221.09	
25	102°26'45"	120	214.56	149.37
26	102°26'45"	90	160.92	
27	16°30'08"	120	34.77	
28	16°30'08"	150	43.47	21.75
29	16°30'08"	180	52.16	
30	49°13'	180	154.62	
31	49°13'	150	128.86	68.70
32	49°13'	120	103.08	
33	12°28'	180	39.17	
34	12°28'	150	32.64	16.38
35	12°28'	120	26.11	
36	31°44'	120	66.46	
37	31°44'	150	83.08	42.63
38	31°44'	180	99.69	
39	14°08'45"	180	44.44	
40	14°08'45"	150	37.04	18.61
41	14°08'45"	120	29.63	
42	7°02'30"	180	22.12	
43	7°02'30"	150	18.44	9.23
44	7°02'30"	120	14.74	
45	144°34'30"	27.55	69.52	
46	144°34'30"	57.55	145.22	180.20
47	27°03'15"	180.00	84.99	
48	27°03'15"	150	70.82	36.09
49	62°28'45"	150	143.58	90.98
50	62°28'45"	120	130.86	
51	101°47'02"	45	79.77	
52	148°42'42"	45	116.80	
53	53°13'	130	120.74	
54	53°13'	100	72.89	50.09
55	53°13'	70	65.02	
56	42°41'	70	52.15	
57	42°41'	100	74.51	39.07
58	42°41'	130	96.85	
59	14°02'13"	130	31.86	
60	64°07'37"	70	78.35	
61	64°07'37"	100	111.94	62.64
62	33°42'04"	130	76.47	
63	30°36'00"	130	69.43	

No.	A	R	L	T
64	30°36'	100	53.41	27.36
65	30°36'	70	37.38	
66	60°53'07"	45	47.62	
67	131°50'33"	45	103.65	
68				
69				
70	54°30'47"	155	93.37	
71	16°23'20"	130	37.19	
72	48°40'	75	63.70	33.92

NOTES

A 10' EASEMENT EACH SIDE OF LOGAN CREEK MUST BE KEPT FREE OF OBSTRUCTIONS OF ANY KIND.

LOTS A,B,C,D,E ARE RESERVED BY OWNER FOR RECREATIONAL USE AND SCENIC OPEN AREAS. WHEN APPROVED BY NEV. STATE HEALTH DEPT. MAY BE USED FOR LOCATION OF SEWAGE LEACH TRENCHES, CONSTRUCTED BY HAND LABOR TO AVOID SCARRING LANDSCAPE.

INDICATES CONC. MONUMENT; SAID MONUMENTS TO BE SET IN PAVED STREETS. ○ INDICATES 1/4" STEEL PIPE MARKERS.

BASIS OF BEARINGS IS RECORD BEARING OF EAST LINE OF NE 1/4 OF SEC. 22, T.14N., R.18E., M.D.B.&M., S.0°52'10"W.

INDICATES 15' BLDG. SETBACK LINE & PUBLIC UTILITY EASEMENT ON EACH SIDE OF STREET.

30136

Recorded at Request of **Downer Engineering**
 On **Nov. 19, 1965** At **11:45** Min. Past **11 AM**
 Official Records of Douglas County, Nevada. Fee **\$ 200.**
 Ethel N. Schacht, Recorder. By **Ethel N. Schacht**

AMENDED FINAL MAP OF LOGAN CREEK ESTATES - UNIT 2
 Located in the E 1/2 of the NE 1/4 of Section 22, T.14N., R.18E., M.D.B.&M., at Lake Tahoe, Douglas Co., Nev.
 Scale: 1"=100'

SHEET TWO OF TWO SHEETS

109-B
 Downer Engineering, Minden, Nevada, July, 1965
 LOGAN CREEK ESTATES