

DRAWING NUMBER  
Round Hill Village #4  
Sheet 1 of 5  
PLAN HOLD CORPORATION • IRVINE, CALIFORNIA  
REORDER BY NUMBER 07048

DRAWING NUMBER  
PLAN HOLD CORPORATION • IRVINE, CALIFORNIA  
REORDER BY NUMBER 07048

DRAWING NUMBER  
PLAN HOLD CORPORATION • IRVINE, CALIFORNIA  
REORDER BY NUMBER 07048

DRAWING NUMBER  
PLAN HOLD CORPORATION • IRVINE, CALIFORNIA  
REORDER BY NUMBER 07048

ROUND HILL VILLAGE • UNIT NO 4  
PORTION OF SECTION 15, T.13N., R.18E., M.D.B&M.  
DOUGLAS COUNTY, NEVADA  
GEORGE S. NOLTE CONSULTING CIVIL ENGINEERS INC.  
SAN FRANCISCO, CALIFORNIA  
MARCH, 1966

KNOW ALL MEN BY THESE PRESENTS

THAT B-NEVA, INC. DOES HEREBY REPRESENT THAT IT IS THE OWNER OF THE LAND DESCRIBED IN THIS PLAT CONSISTING OF FIVE SHEETS; THAT IT APPROVES AND ACCEPTS THIS PLAT OF SAID LANDS AS SHOWN IN ACCORDANCE WITH AND FOR THE USES AND PURPOSES SET FORTH IN NEVADA REVISED STATUTES 116 AND 278 AND SUBSEQUENT AMENDMENTS THERETO AND DOUGLAS COUNTY ORDINANCE 106, AND SAID LANDS DESIGNATED ON THIS PLAT AS STREETS AND OTHER PUBLIC WAYS SHOWN HEREON, AND ALSO OFFER FOR DEDICATION AND DOES HEREBY DEDICATE FOR PARTICULAR PURPOSES THE FOLLOWING: RIGHTS OF WAY AND EASEMENTS FOR WATER, GAS, SEWER AND DRAINAGE PIPES; AND FOR POLES, ANCHORS AND GUYS AND OVERHEAD AND UNDERGROUND WIRES AND CONDUITS FOR ELECTRIC AND TELEPHONE SERVICE, TOGETHER WITH ANY AND ALL APPURTENANCES APPERTAINING THERETO ON, OVER, ACROSS AND UNDER THOSE STRIPS OF LAND LYING BETWEEN THE REAR OR SIDE LINES OF LOTS OR BOTH AND THE LINES SHOWN HEREON AND DESIGNATED "PUBLIC UTILITY EASEMENTS" LINES AND RIGHTS OF WAY AND EASEMENTS FOR POLES, ANCHORS AND GUYS AND OVERHEAD AND UNDERGROUND WIRES AND CONDUITS FOR ELECTRIC AND TELEPHONE SERVICE TOGETHER WITH ANY AND ALL APPURTENANCES APPERTAINING THERETO ON, OVER, ACROSS AND UNDER STRIPS OF LAND 10 FEET IN WIDTH, CONTIGUOUS TO ANY LOT LINE WHICH IS CONTIGUOUS TO ANY STREET OR OTHER PUBLIC WAY AND WITHIN SUCH LOTS AND RIGHTS OF WAY AND EASEMENTS FOR POLES, ANCHORS AND GUYS WITHIN THOSE STRIPS OF LAND LYING 10 FEET ON EITHER SIDE OF ALL SIDE LOT LINES.

BY Stephen H. Bourne PRESIDENT  
BY Norma D. Bourne SECRETARY - TREASURER

STATE OF NEVADA } s.s.  
COUNTY OF DOUGLAS }  
ON THIS 20th DAY OF April IN THE YEAR  
BEFORE ME, EARNHART W. THIRAN, COUNTY CLERK IN AND FOR THE COUNTY OF DOUGLAS, STATE OF NEVADA PERSONALLY APPEARED Stephen H. Bourne AND Norma D. Bourne KNOWN TO ME TO BE THE PRESIDENT AND SECRETARY - TREASURER RESPECTIVELY OF THE CORPORATION THAT EXECUTED THE FOREGOING INSTRUMENT, AND UPON OATH DID DEPOSE THAT THEY ARE THE OFFICERS OF SAID CORPORATION AS ABOVE DESIGNATED; THAT THEY ARE ACQUAINTED WITH THE SEAL OF SAID CORPORATION AND THAT THE SEAL AFFIXED TO SAID INSTRUMENT IS THE SEAL OF SAID CORPORATION, THAT THE SIGNATURES TO SAID INSTRUMENT WERE MADE BY THE OFFICERS OF SAID CORPORATION AS INDICATED AFTER SAID SIGNATURES AND THAT SAID CORPORATION EXECUTED SAID INSTRUMENT FREELY AND VOLUNTARILY FOR THE USES AND PURPOSES THEREIN MENTIONED.  
IN WITNESS WHEREOF I HAVE HEREUNTO SET MY HAND AND AFFIXED MY OFFICIAL SEAL, AT MY OFFICE IN SAID COUNTY THE DAY AND THE YEAR IN THIS CERTIFICATE FIRST ABOVE WRITTEN.

Earnhart W. Thiran  
COUNTY CLERK IN AND FOR THE COUNTY OF DOUGLAS,  
STATE OF NEVADA

I, GEORGE S. NOLTE, DO HEREBY CERTIFY THAT THIS PLAT IS A TRUE AND ACCURATE MAP OF THE LAND SURVEYED UNDER MY SUPERVISION AND LAID OUT INTO BLOCKS, LOTS AND STREETS AT THE INSTANCE OF B-NEVA, INC. THAT THE LOCATIONS OF THE BLOCKS, LOTS AND STREETS HAVE BEEN DEFINITELY ESTABLISHED IN STRICT ACCORDANCE WITH THE LAW AND AS SHOWN HEREON; THAT THE BLOCKS, LOTS AND STREETS SHOWN HEREON ARE SITUATED WHOLLY WITHIN SECTION 15, TOWNSHIP 13 NORTH, RANGE 18 EAST, MOUNT DIABLO BASE AND MERIDIAN, THAT THE SURVEY WAS MADE DURING NOVEMBER, 1965 THAT THE MONUMENTS ARE SUFFICIENT TO ENABLE THE SURVEY TO BE RETRACED; MONUMENTS TO BE SET UPON COMPLETION OF GRADING OR NO LATER THAN DECEMBER, 1966 AND THAT THE AREA IS 34.80 ACRES MORE OR LESS.

George S. Nolte  
GEORGE S. NOLTE, R. E. NO. 1198

I, Robert D. Dwyer ENGINEER FOR THE COUNTY OF DOUGLAS, STATE OF NEVADA, HEREBY CERTIFY THAT I HAVE EXAMINED THIS MAP ENTITLED ROUND HILL VILLAGE, UNIT NO. 4 AND THAT SAID SUBDIVISION IS SUBSTANTIALLY AS IT APPEARED ON THE TENTATIVE MAP; THAT ALL OF THE CONDITIONS OF STATE LAWS AND LOCAL ORDINANCES HAVE BEEN COMPLIED WITH AND I AM SATISFIED THE SAME IS TECHNICALLY CORRECT.

Robert D. Dwyer  
ENGINEER FOR THE COUNTY OF DOUGLAS, STATE OF NEVADA

THIS SUBDIVISION PLAN IS HEREBY APPROVED WITH REGARD TO COMPLIANCE WITH HEALTH DEPARTMENT REGULATIONS GOVERNING LOT SIZES. CONSTRUCTION PERMITS WILL NOT BE APPROVED UNTIL PLANS AND SPECIFICATIONS FOR THE SUBDIVISION WATER SUPPLY IS ASSURED AND NO BUILDING PERMITS WILL BE ISSUED UNTIL A SATISFACTORY METHOD OF SEWAGE DISPOSAL IS PROVIDED.

Robert D. Dwyer 4-12-66  
NEVADA STATE HEALTH DEPARTMENT

THE EASEMENTS ON THIS MAP HAVE BEEN CHECKED AND APPROVED BY THE CALIFORNIA INTERSTATE TELEPHONE COMPANY AND SIERRA PACIFIC POWER COMPANY:  
CALIFORNIA INTERSTATE TELEPHONE COMPANY  
SIERRA PACIFIC POWER COMPANY  
BY: H.L. Roberts 4-13-66 BY: Fred Bering 3-31-66

REVIEWED, APPROVED AND RECOMMENDED TO THE COUNTY COMMISSIONERS OF DOUGLAS COUNTY, BY THE DOUGLAS COUNTY PLANNING COMMISSION ON THIS 30 DAY OF MARCH 1966.

Earl A. Raven  
CHAIRMAN - PLANNING COMMISSION DOUGLAS COUNTY,  
STATE OF NEVADA

STATE OF NEVADA } s.s.  
COUNTY OF DOUGLAS }  
I, EARNHART W. THIRAN, COUNTY CLERK IN AND FOR THE COUNTY OF DOUGLAS, STATE OF NEVADA, DO HEREBY CERTIFY THAT THE ABOVE AND FOREGOING PLAT ENTITLED "ROUND HILL VILLAGE, UNIT NO. 4" WAS PRESENTED TO THE BOARD OF COMMISSIONERS OF DOUGLAS COUNTY, AT A REGULAR MEETING THEREOF HELD ON THE 20th DAY OF April, 1966, AND THAT SAID BOARD OF COMMISSIONERS DID THEREON BY RESOLUTION DULY PASSED AND ADOPTED AT SAID MEETING APPROVE AND ACCEPT SAID MAP, BUT DID NOT ACCEPT FOR PUBLIC USE ANY OF THE STREETS, ROADS OR EASEMENTS SHOWN THERON, BUT DID RESERVE THE RIGHT TO ACCEPT SAID STREETS, ROADS AND EASEMENTS AT ANY FUTURE DATE.

I FURTHER CERTIFY THAT ALL BONDS AS REQUIRED BY LAW TO ACCOMPANY THE WITHIN MAP HAVE BEEN APPROVED BY SAID BOARD OF COMMISSIONERS AND FILED IN MY OFFICE.  
IN WITNESS WHEREOF, I HAVE HEREUNTO SET MY HAND THIS 20th DAY OF April 1966  
Earnhart W. Thiran  
COUNTY CLERK IN AND FOR THE COUNTY OF DOUGLAS,  
STATE OF NEVADA

31837  
FILED FOR RECORD AT THE REQUEST OF NEVADA TITLE GUARANTY COMPANY ON THE 25 DAY OF April 1966  
AT 01 MINUTES PAST 8 M.  
RECORDED IN BOOK \_\_\_\_\_ OF MAPS AT PAGE \_\_\_\_\_  
RECORDS OF DOUGLAS COUNTY, NEVADA.  
7 5:00 pm  
Ethel J. Schacht  
County Recorder

THIS IS TO CERTIFY THAT B-NEVA, INC. IS THE ONLY PARTY HAVING A RECORD TITLE INTEREST IN THE TRACT OF LAND REPRESENTED ON THIS MAP.  
NEVADA TITLE GUARANTY COMPANY  
BY: C. W. Riggan

DRAWING NUMBER  
*Round Hill Village #4*  
 Sheet 2 of 5  
 PLAN HOLD CORPORATION • IRVINE, CALIFORNIA  
 RECORDED BY NUMBER 0704

DRAWING NUMBER  
 PLAN HOLD CORPORATION • IRVINE, CALIFORNIA  
 RECORDED BY NUMBER 0704

DRAWING NUMBER  
 PLAN HOLD CORPORATION • IRVINE, CALIFORNIA  
 RECORDED BY NUMBER 0704

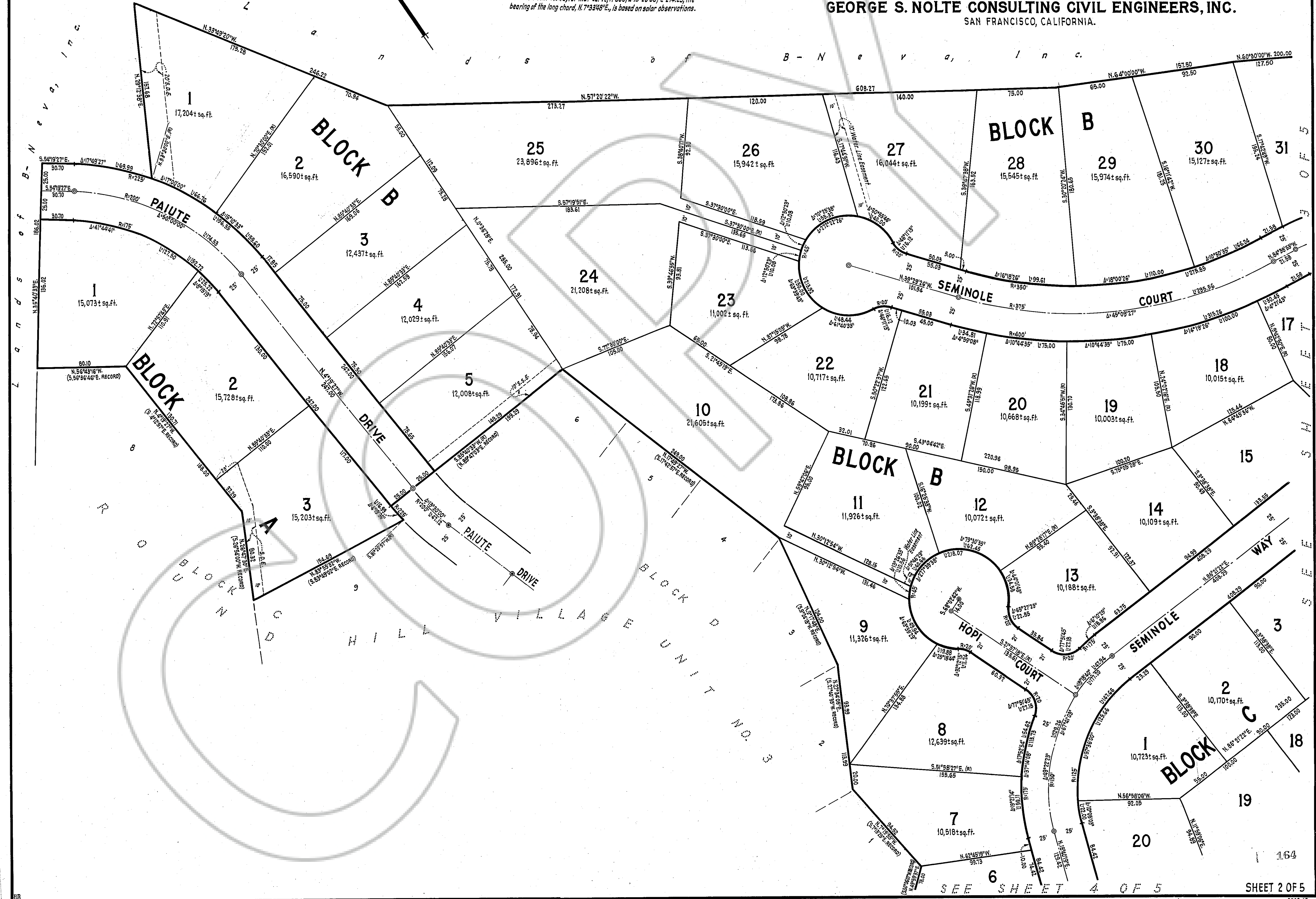
DRAWING NUMBER  
 PLAN HOLD CORPORATION • IRVINE, CALIFORNIA  
 RECORDED BY NUMBER 0704

**LEGEND**  
 — Concrete street monument set.  
 — Existing street monument.  
 S.S.E. Sanitary sewer easement and pedestrian path.  
 S.D.E. Storm drain easement and pedestrian path.

**BASIS OF BEARING**  
 On Elks Point Road, for that curve, R=800', Δ=15°20'36", L=214.23, the bearing of the long chord, N.7°33'48"E, is based on solar observations.

# ROUND HILL VILLAGE UNIT NO. 4

PORTION OF SECTION 15, T.13N., R.18E., M.D.B. & M.  
**DOUGLAS COUNTY, NEVADA.**  
 SCALE: 1"=40'  
 MARCH, 1966.  
**GEORGE S. NOLTE CONSULTING CIVIL ENGINEERS, INC.**  
 SAN FRANCISCO, CALIFORNIA.



DRAWING NUMBER  
Round Hill Village #4  
Sheet 3 of 5  
PLAN HOLD CORPORATION • IRVINE, CALIFORNIA  
REGISTERED PROFESSIONAL ENGINEER

DRAWING NUMBER  
PLAN HOLD CORPORATION • IRVINE, CALIFORNIA  
REGISTERED PROFESSIONAL ENGINEER

DRAWING NUMBER  
PLAN HOLD CORPORATION • IRVINE, CALIFORNIA  
REGISTERED PROFESSIONAL ENGINEER

DRAWING NUMBER  
PLAN HOLD CORPORATION • IRVINE, CALIFORNIA  
REGISTERED PROFESSIONAL ENGINEER

# ROUND HILL VILLAGE UNIT NO. 4

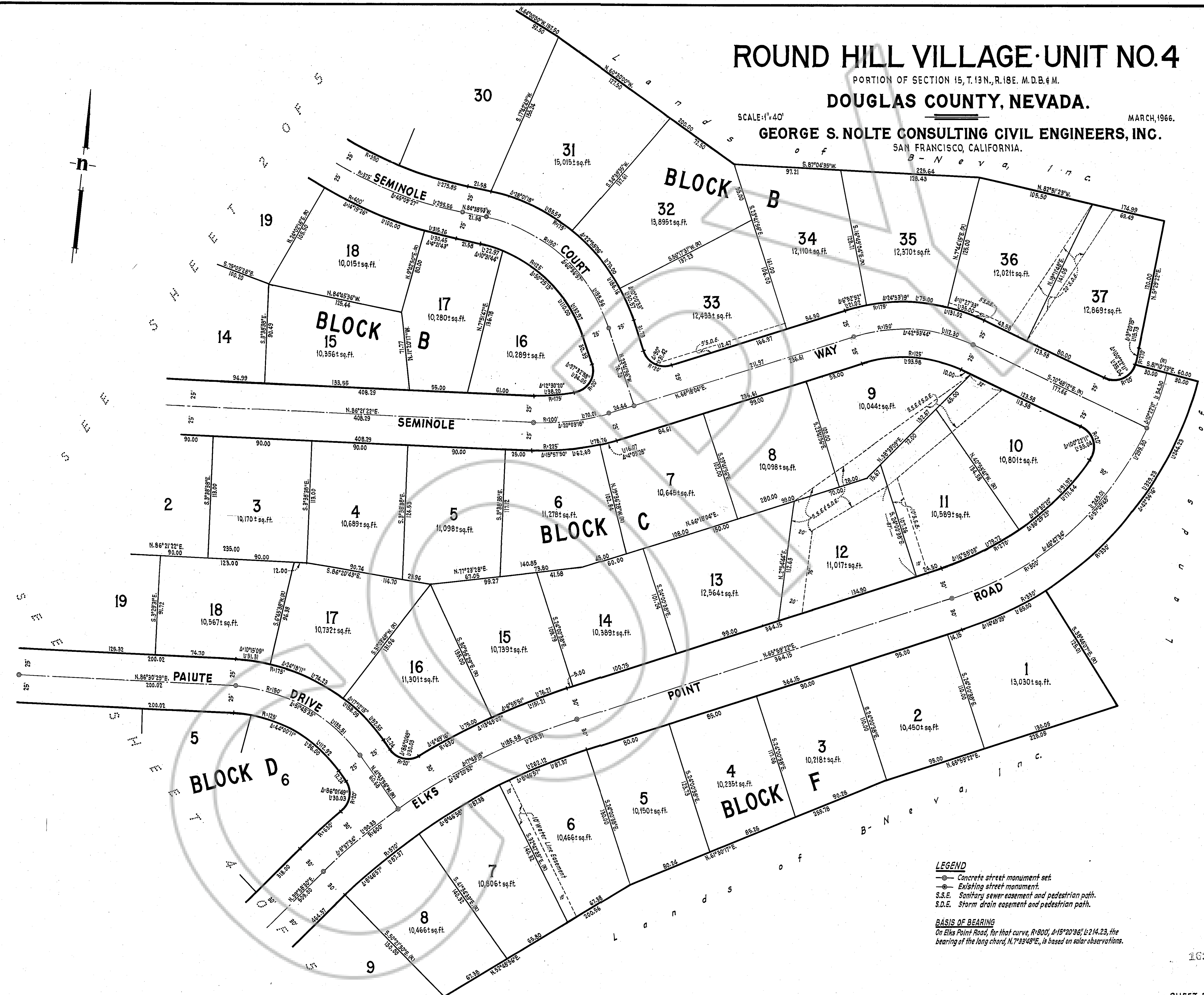
PORTION OF SECTION 15, T.13N., R.18E. M.D.B.#M.

## DOUGLAS COUNTY, NEVADA.

SCALE: 1"=40'

GEORGE S. NOLTE CONSULTING CIVIL ENGINEERS, INC.  
SAN FRANCISCO, CALIFORNIA.

MARCH, 1966.



**LEGEND**  
— Concrete street monument set  
— Existing street monument  
S.S.E. Sanitary sewer easement and pedestrian path.  
S.D.E. Storm drain easement and pedestrian path.

**BASIS OF BEARING**  
On Elks Point Road, for that curve, R=800', Δ=15°20'36" Δ=214.23, the bearing of the long chord, N.7°33'48"E, is based on solar observations.

DRAWING NUMBER  
Round Hill Village #4  
Sheet 4 of 5

DRAWING NUMBER

DRAWING NUMBER

DRAWING NUMBER

# ROUND HILL VILLAGE UNIT NO. 4

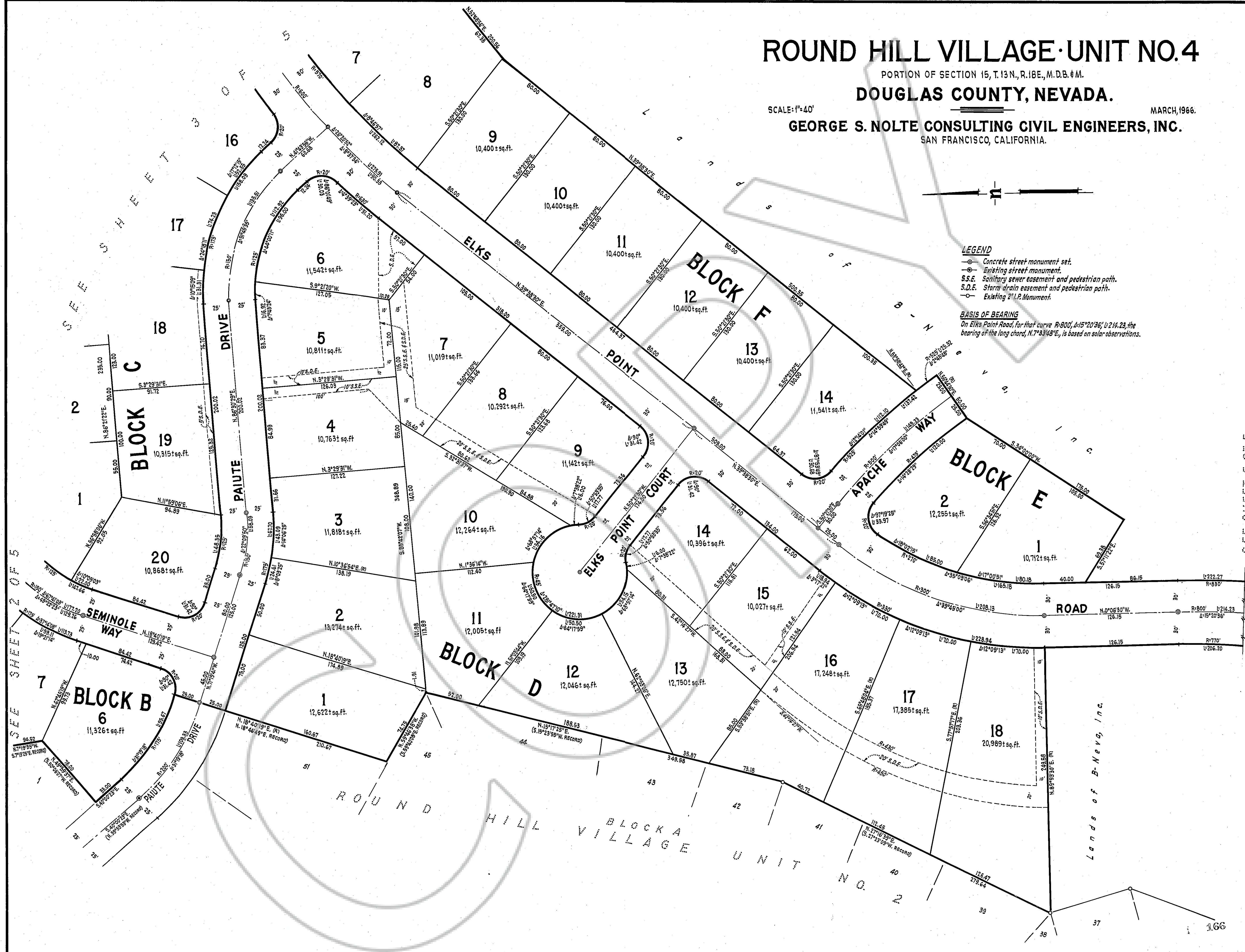
PORTION OF SECTION 15, T.13N., R.18E., M.D.B. & M.

## DOUGLAS COUNTY, NEVADA.

SCALE: 1"=40'

MARCH, 1966.

GEORGE S. NOLTE CONSULTING CIVIL ENGINEERS, INC.  
SAN FRANCISCO, CALIFORNIA.



**LEGEND**  
— Concrete street monument set.  
— Existing street monument.  
S.S.E. Sanitary sewer easement and pedestrian path.  
S.D.E. Storm drain easement and pedestrian path.  
— Existing 2 1/2" P. Monument.

**BASIS OF BEARING**  
On Elks Point Road, for that curve R=800', Δ=15°20'36", L=214.23, the bearing of the long chord, N.7°33'48"E., is based on solar observations.

SEE SHEET 5 OF 5

DRAWING NUMBER  
*Round Hill Village #4*  
Sheet 5 of 5  
PLAN HOLD CORPORATION • IRVINE, CALIFORNIA  
RECORD BY NUMBER 07204

DRAWING NUMBER  
PLAN HOLD CORPORATION • IRVINE, CALIFORNIA  
RECORD BY NUMBER 07204

DRAWING NUMBER  
PLAN HOLD CORPORATION • IRVINE, CALIFORNIA  
RECORD BY NUMBER 07204

DRAWING NUMBER  
PLAN HOLD CORPORATION • IRVINE, CALIFORNIA  
RECORD BY NUMBER 07204

# ROUND HILL VILLAGE UNIT NO. 4

PORTION OF SECTION 15, T.13N., R.18E., M.D.B. & M.

## DOUGLAS COUNTY, NEVADA.

SCALE: 1"=40'

MARCH, 1966.

### GEORGE S. NOLTE CONSULTING CIVIL ENGINEERS, INC.

SAN FRANCISCO, CALIFORNIA.

SEE SHEET #03

L  
a  
n  
d  
s

o  
f

B - Nevada, Inc.

L

a

n

d

s

L

a

n

d

s

L

a

n

d

s

L

a

n

d

s

MSFAUL

N. 25°17'30"W.  
(N. 25°17'00"W. RECORD)

ROUND HILL VILLAGE UNIT NO. 1

Lands of Robert Vignalats and Augustine Vignalats

Lands of B-Neva, Inc.

167

SHEET 5 OF 5

ROUND HILL VILLAGE #4 3069-65

#### LEGEND

- ⊙ Concrete street monument set.
- ⊙ Existing street monument.
- S.S.E. Sanitary sewer easement and pedestrian path.
- S.D.E. Storm drain easement and pedestrian path.

#### BASIS OF BEARING

On Elks Point Road, for that curve R=800', Δ=15°20'36", L=214.23, the bearing of the long chord, N.7°33'48"E, is based on solar observations.

