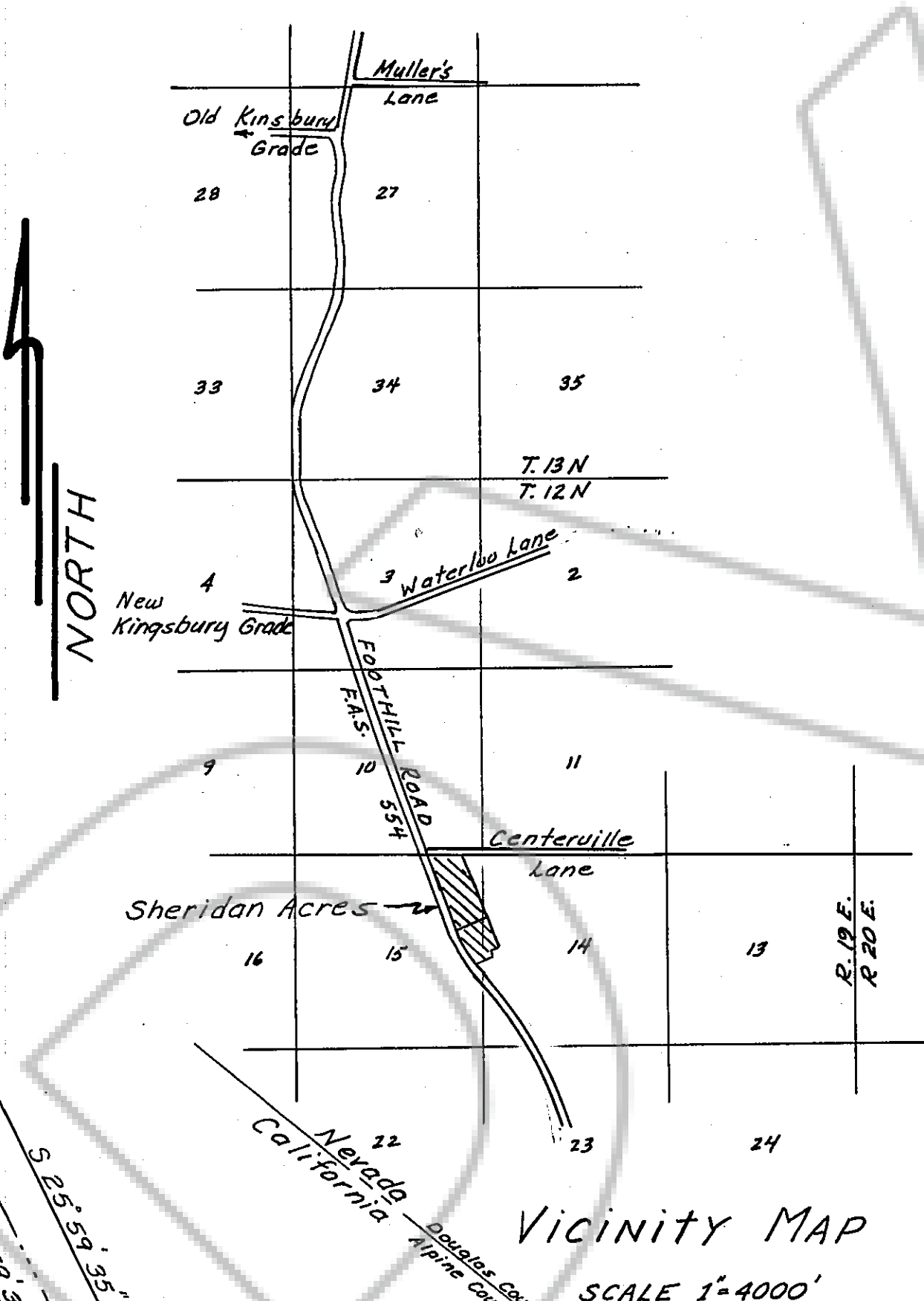


DRAWING NUMBER
Sheridan Acres #2

DRAWING NUMBER

DRAWING NUMBER

DRAWING NUMBER



42501
FILE NUMBER
FILED FOR RECORD AT THE REQUEST OF
L. J. Navaran
ON Oct 14, 1968, AT 35 MINUTES PAST
10 O'CLOCK A. M., RECORDS OF
DOUGLAS COUNTY NEVADA
5.00pd
C. J. Schuch
COUNTY RECORDER

Note: The front 10 ft. of all lots contiguous to all streets or roads shall be reserved as a public utility easement for underground telephone & electric facilities, together with surface-mounted transformers and surface-mounted switchgear, and other associated fixtures or appurtenances necessary for the installation and operation of said underground electric distribution system.

Note: The sizes of the lots in this subdivision are in accordance with the approved master plan for the complete development of the 245 acre Sheridan Acres property which specifies an overall density of one homesite per acre.

CERTIFICATE OF COUNTY CLERK
Approved and accepted this 5th day of Sept. 1968, by the Board of County Commissioners of Douglas County, Nevada, subject to the stipulation that by adopting same the County hereby assumes no responsibility for the public ways shown hereon. The County Commissioners, however, reserve the right to accept streets as shown hereon at any future date.

ATTEST
Richard L. Smith
CHAIRMAN
Earhart Witham
COUNTY CLERK

PLANNING COMMISSION CERTIFICATE
Received, approved, and recommended to the Board of County Commissioners of Douglas County by the Douglas County Planning Commission. Dated this 28 day of August 1968.

Richard K. DeFau
CHAIRMAN

COUNTY ENGINEERS CERTIFICATE
I certify that I have examined this map, and that all provisions of all acts and ordinances applicable have been complied with and that I am satisfied that the map is technically correct.

Richard Witham
COUNTY ENGINEER

UTILITY COMPANIES CERTIFICATE
The easements shown on this plat have been checked and approved by the Sierra Pacific Power Company and the California Interstate Telephone Co.

Robert Shannon
SIERRA PACIFIC POWER CO.
Ed P. Munnwell
CALIF. INTERSTATE TELEPHONE CO.

TITLE CERTIFICATE
The undersigned hereby certifies that this map has been examined and that L. J. Navaran is the owner of all lands designated hereon as SHERIDAN ACRES UNIT NO. 2.

SIGNATURE James D. DeFau
DATED September 2, 1968

STATE OF NEVADA
COUNTY OF DOUGLAS
I, L. J. Navaran, do hereby certify that I am the owner of the parcel of land which is shown upon the map of SHERIDAN ACRES SUBDIVISION UNIT TWO and have consented to and do hereby dedicate all the streets and public easements indicated hereon for the use of the public and have consented to the preparation and recording of this map.

L. J. Navaran
OWNER

STATE OF NEVADA
COUNTY OF DOUGLAS
I, Robert C. Downer, do hereby certify that this plat is a true and accurate map of the land shown hereon, surveyed by me and laid out into blocks, lots, and streets at the instance of the hereinafter signed owners; that the location of said blocks, lots, and streets will be definitely established and perpetuated in strict accordance with the law and as shown hereon; that the lots, blocks, and streets shown hereon are situated within the East one-half of Sec. 15, and the West one-half of Sec. 14, T. 12 N., R. 19 E., M.D.B. & M.

Robert C. Downer
Reg. Nev. R.L.S. #446

This subdivision will be served by a community water system, water quality conforming to Nevada Water Supply Regulations and in that volume required for Fire Protection, the design and layout to be approved by the State Health Department, and under Public Service Commission Direction. No permit for construction of a dwelling on any lot is to be issued or requested until that lot can be served by this water system, but a permit can be issued when it is determined the water supply will be ready when the construction for which it is requested is completed.
I hereby certify that I have examined this plat, consisting of two sheets, that I am familiar with this tract, and that the Rules and Regulations of the Nevada Department of Health have been complied with in offering this plat for dedication; however, this does not constitute approval of certain lots found upon closer examination, at a later date, to be unsuitable for private sewage disposal systems.

Robert C. Downer P-27-68
Nevada State Department of Health
Division of Public Health Engineering

**SHERIDAN ACRES
UNIT TWO**
Located in the E. 1/2 Sec. 15 &
W. 1/2 Sec. 14, T. 12 N., R. 19 E.
M.D.B. & M.
Douglas County, Nevada
SCALE 1" = 100'
DOWNER ENGINEERING
Minden, Nevada 175-B