

DRAWING NUMBER  
Lake U: Ilage Unit 2D  
Sheet 1 of 2  
PLAN HOLD CORPORATION • IRVINE, CALIFORNIA  
RECORDED BY NUMBER 02048

DRAWING NUMBER  
PLAN HOLD CORPORATION • IRVINE, CALIFORNIA  
RECORDED BY NUMBER 02048

DRAWING NUMBER  
PLAN HOLD CORPORATION • IRVINE, CALIFORNIA  
RECORDED BY NUMBER 02048

DRAWING NUMBER  
PLAN HOLD CORPORATION • IRVINE, CALIFORNIA  
RECORDED BY NUMBER 02048

# LAKE VILLAGE UNIT No. 2D

PORTION OF SECTION 23 T13N R18E MDB & M  
DOUGLAS COUNTY, NEVADA

**CHRISTOPH J. ALTEMUELLER, P.E.**

CONSULTING ENGINEER  
MINDEN, NEVADA

APRIL 1972  
SHEET 1 OF 2 SHEETS

KNOW ALL MEN BY THESE PRESENTS THAT, SAMUEL ZELL, TRUSTEE, DOES HEREBY REPRESENT THAT HE IS THE OWNER OF THE LAND DESCRIBED IN THIS MAP CONSISTING OF TWO SHEETS, AND THAT HE APPROVES AND ACCEPTS THIS MAP OF SAID LANDS AS SHOWN IN ACCORDANCE WITH AND FOR THE USES AND PURPOSES SET FORTH IN THE NEVADA REVISED STATUTES 116 AND 278 AND SUBSEQUENT AMENDMENTS THERETO, AND DOUGLAS COUNTY ORDINANCE 106, AND DOES HEREBY DEDICATE TO THE PUBLIC USE THOSE PORTIONS OF SAID LANDS DESIGNATED ON THIS MAP AS AVENUES AND OTHER PUBLIC WAYS SHOWN THEREON AND ALSO OFFERS FOR DEDICATION AND DOES HEREBY DEDICATE FOR PARTICULAR PURPOSES THE FOLLOWING RIGHTS OF WAY AND EASEMENTS FOR WATER, GAS, SEWER AND DRAINAGE PIPES AND FOR POLES, ANCHORS AND GUYS, AND OVER-HEAD AND UNDERGROUND WIRES AND CONDUITS FOR ELECTRIC AND TELEPHONE SERVICE TOGETHER WITH ANY AND ALL APPURTENANCES PERTAINING THERETO ON, OVER, ACROSS AND UNDER ALL THAT LAND LYING OUTSIDE THE INDIVIDUAL SITES SHOWN HEREON.

*Samuel Zell trustee by  
Jack Lance his attorney  
in fact.*

### DEDICATION OF COMMON AREAS

SAMUEL ZELL, TRUSTEE, IN RECORDING THIS PLAT OF LAKE VILLAGE UNIT No. 2D HAS DESIGNATED CERTAIN AREAS OF LAND AS PARKS, COMMON AREAS, ETC., INTENDED FOR USE BY THE HOMEOWNERS IN LAKE VILLAGE UNIT No. 2D, FOR RECREATION AND OTHER RELATED ACTIVITIES. THE DESIGNATED AREAS ARE NOT DEDICATED HEREBY FOR USE BY THE GENERAL PUBLIC BUT ARE DEDICATED TO THE COMMON USE AND ENJOYMENT OF THE HOMEOWNERS IN UNIT No. 2D AS MORE FULLY PROVIDED IN THE DECLARATION OF COVENANTS, CONDITIONS AND RESTRICTIONS APPLICABLE TO LAKE VILLAGE UNIT NOS. 1 & 2, DATED \_\_\_\_\_, 19\_\_\_\_. SAID DECLARATION OF COVENANTS, CONDITIONS AND RESTRICTIONS IS HEREBY INCORPORATED AND MADE A PART OF THIS PLAT.

### NOTES:

ALL OF LAKE VILLAGE UNIT No. 2D LIES WITHIN DOUGLAS COUNTY SEWER IMPROVEMENT DISTRICT NO. 1 AND LAKE TAHOE FIRE PROTECTION DISTRICT. WATER SUPPLY BY KINGSBURY WATER COMPANY. SUBDIVIDER IS SAMUEL ZELL, TRUSTEE 10 SO. LASALLE STREET CHICAGO, ILLINOIS

I, JOHN M. STEWART, DO HEREBY CERTIFY THAT THIS MAP IS A TRUE AND ACCURATE MAP OF THE LAND SURVEYED BY ME AND LAID OUT INTO LOTS AND STREETS AT THE INSTANCE OF SAMUEL ZELL, TRUSTEE, AND THAT THE LOCATION OF THE LOTS AND STREETS HAS BEEN DEFINITELY ESTABLISHED IN STRICT ACCORDANCE WITH THE LAW AND AS SHOWN HEREON; THAT THE LOTS AND STREETS HEREON ARE SITUATED WHOLLY WITHIN SECTION 23, TOWNSHIP 13 NORTH, RANGE 18 EAST, MOUNT DIABLO BASE AND MERIDIAN; THAT THE SURVEY WAS MADE DURING THE MONTH OF APRIL, 1972, THAT THE MONUMENTS ARE SUFFICIENT TO ENABLE THE SURVEY TO BE RETRACED, MONUMENTS TO BE SET UPON COMPLETION OF GRADING, BUT NO LATER THAN \_\_\_\_\_

*John M. Stewart*  
JOHN M. STEWART, R.L.S. 2338

THE EASEMENTS ON THIS MAP HAVE BEEN CHECKED AND APPROVED BY THE CONTINENTAL TELEPHONE COMPANY AND BY THE SIERRA PACIFIC POWER COMPANY.

CONTINENTAL TELEPHONE COMPANY  
SIERRA PACIFIC POWER COMPANY  
BY: *R.J. Picken* 5/22/72 BY: *Ray Robustelli*

APPROVED AND ACCEPTED THIS 17 DAY OF May 1972, BY THE DIRECTOR, BUREAU OF ENVIRONMENTAL HEALTH.

BY: *James B. Williams 1.*  
NEVADA STATE HEALTH DEPARTMENT

I, JERE WILLIAMS, ENGINEER IN AND FOR THE COUNTY OF DOUGLAS, STATE OF NEVADA, HEREBY CERTIFY THAT I HAVE EXAMINED THIS MAP ENTITLED LAKE VILLAGE UNIT No. 2D AND THAT SAID MAP OF SAID SUBDIVISION IS SUBSTANTIALLY AS IT APPEARED ON THE TENTATIVE MAP, THAT ALL CONDITIONS OF STATE LAWS AND LOCAL ORDINANCES HAVE BEEN COMPLIED WITH AND I AM SATISFIED THE SAME IS TECHNICALLY CORRECT.

*Jere E. Williams* 5/17/72  
ENGINEER FOR THE COUNTY OF DOUGLAS,  
STATE OF NEVADA

STATE OF NEVADA S.S.  
COUNTY OF DOUGLAS

ON THIS 5<sup>th</sup> DAY OF May IN THE YEAR 1972 BEFORE ME, EARNHART W. THRAN, COUNTY CLERK IN AND FOR THE COUNTY OF DOUGLAS, STATE OF NEVADA, PERSONALLY APPEARED SAMUEL ZELL, KNOWN TO ME TO BE THE PERSON WHO EXECUTED THE FOREGOING INSTRUMENT AND UPON OATH DID DEPOSE THAT HE, AS TRUSTEE, IS THE OWNER OF THE LAND DESCRIBED IN THIS MAP; THAT THE SIGNATURE TO SAID INSTRUMENT WAS EXECUTED BY HIMSELF FREELY AND VOLUNTARILY FOR THE USES AND PURPOSES THEREIN MENTIONED.

IN WITNESS WHEREOF I HAVE HEREUNTO SET MY HAND AND AFFIXED MY OFFICIAL SEAL AT MY OFFICE IN SAID COUNTY, THE DAY, MONTH AND YEAR IN THIS CERTIFICATE FIRST ABOVE WRITTEN.

*Earnhart W. Thran*  
COUNTY CLERK IN AND FOR THE COUNTY OF DOUGLAS  
STATE OF NEVADA

STATE OF NEVADA S.S.  
COUNTY OF DOUGLAS

I, EARNHART W. THRAN, COUNTY CLERK IN AND FOR THE COUNTY OF DOUGLAS, STATE OF NEVADA, DO HEREBY CERTIFY THAT THE ABOVE AND FOREGOING PLAT ENTITLED, LAKE VILLAGE UNIT No. 2D WAS PRESENTED TO THE BOARD OF COMMISSIONERS OF DOUGLAS COUNTY AT A REGULAR MEETING THEREOF HELD ON THE 5<sup>th</sup> DAY OF MAY 1972, AND THAT SAID BOARD OF COMMISSIONERS DID THEREON BY RESOLUTION DULY PASSED AND ADOPTED AT SAID MEETING APPROVE AND ACCEPT SAID MAP, BUT DID NOT ACCEPT FOR PUBLIC USE ANY OF THE STREETS, ROADS OR EASEMENTS SHOWN THEREON BUT DID RESERVE THE RIGHT TO ACCEPT SAID STREETS, ROADS AND EASEMENTS AT ANY FUTURE DATE.

I FURTHER CERTIFY THAT ALL BONDS AS REQUIRED BY LAW TO ACCOMPANY THE WITHIN MAP HAVE BEEN APPROVED BY SAID BOARD OF COMMISSIONERS AND FILED IN MY OFFICE. IN WITNESS WHEREOF, I HAVE HEREUNTO SET MY HAND THIS 5<sup>th</sup> DAY OF May, 1972.

*Earnhart W. Thran*  
COUNTY CLERK IN AND FOR THE COUNTY  
OF DOUGLAS, STATE OF NEVADA

REVIEWED, APPROVED AND RECOMMENDED TO THE COUNTY COMMISSIONERS OF DOUGLAS COUNTY BY THE DOUGLAS COUNTY PLANNING COMMISSION ON THIS 17<sup>th</sup> DAY OF May 1972.

*[Signature]*  
CHAIRMAN PLANNING COMMISSION OF THE  
COUNTY OF DOUGLAS, STATE OF NEVADA

Doc. No. 59803 Book 101 Page 277  
FILED FOR RECORD AT THE REQUEST OF *Samuel Zell* ON THE 5<sup>th</sup> DAY OF June 1972; AT 55 MINUTES PAST 03 O'CLOCK P.M. RECORDS OF DOUGLAS COUNTY, NEVADA.

*Patricia Stanley by Jacqueline O'Leary, Deputy*  
PATRICIA STANLEY COUNTY RECORDER IN  
AND FOR THE COUNTY OF DOUGLAS, STATE OF NEVADA

THIS IS TO CERTIFY THAT SAMUEL ZELL, TRUSTEE IS THE ONLY PARTY HAVING RECORD TITLE INTEREST IN THE TRACT OF LAND REPRESENTED ON THIS MAP.

BY: *Eleanor J. Helling*  
FIRST AMERICAN TITLE COMPANY

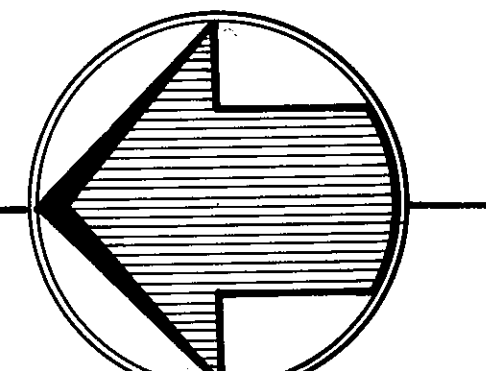


DRAWING NUMBER  
Lake Village Unit 2D  
Sheet 2 of 2  
PLAN HOLD CORPORATION • IRVINE, CALIFORNIA  
REGISTERED PROFESSIONAL ENGINEER

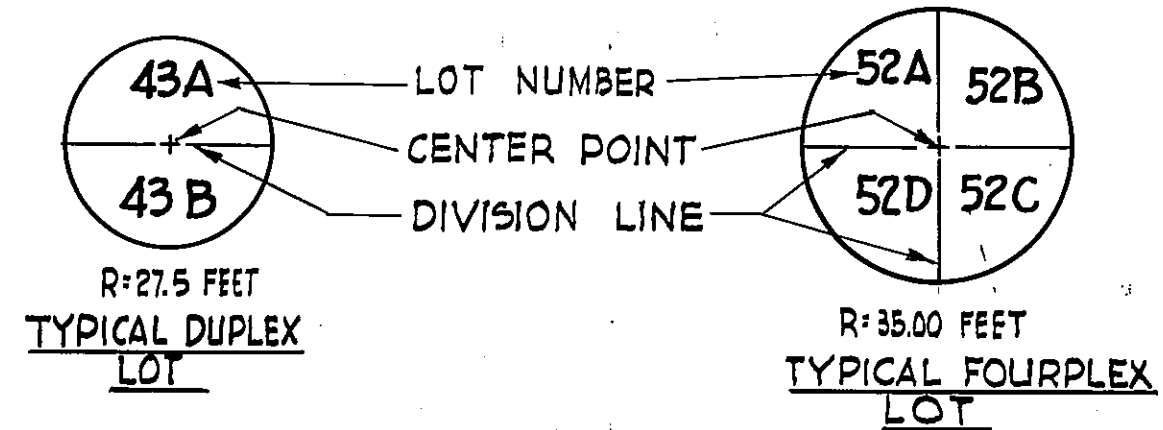
DRAWING NUMBER  
PLAN HOLD CORPORATION • IRVINE, CALIFORNIA  
REGISTERED PROFESSIONAL ENGINEER

DRAWING NUMBER  
PLAN HOLD CORPORATION • IRVINE, CALIFORNIA  
REGISTERED PROFESSIONAL ENGINEER

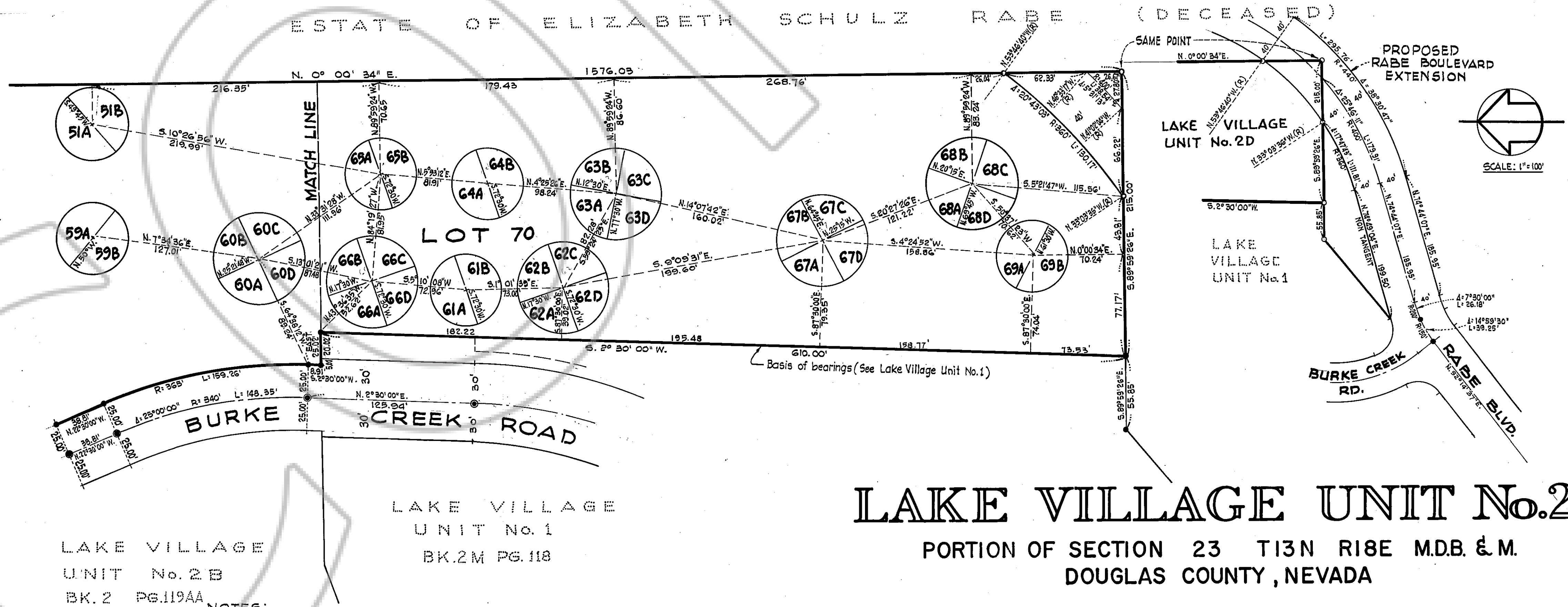
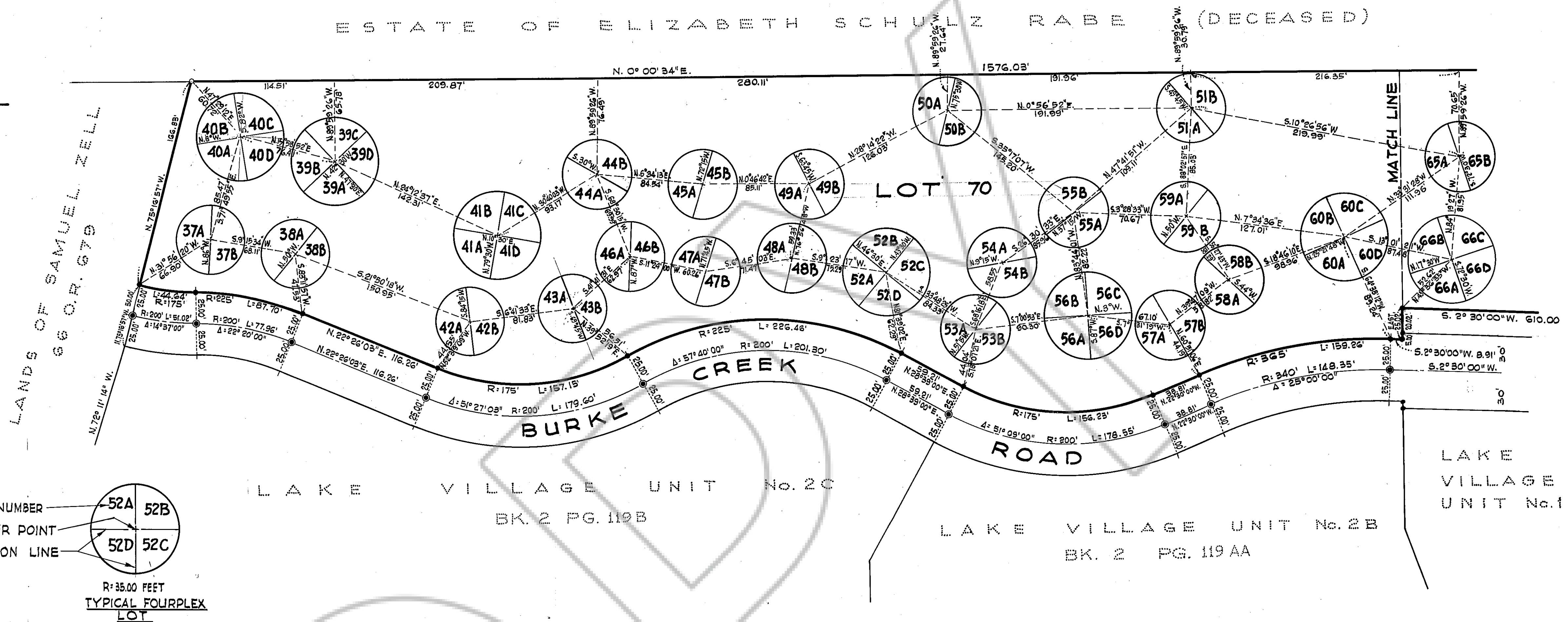
DRAWING NUMBER  
PLAN HOLD CORPORATION • IRVINE, CALIFORNIA  
REGISTERED PROFESSIONAL ENGINEER



SCALE: 1" = 50'



LOT 70 = COMMON AREA FOR LOTS 37 THRU 70



- NOTES:
- All distances and dimensions are given in feet and decimals thereof.
  - The blue borderline indicates the boundary of land subdivided by this map.
  - All lot dimensions and bearings are parallel with or at right angles to the given bearing for each group of lots, except as noted.

- LEGEND:
- Indicates Class "A" Monument found.
  - Indicates Class "B" Monument set.
  - Indicates 3/4" Iron Pipe set at all lot corners and curve extremities.
  - Indicates 3/4" Iron Pipe found or as noted.

# LAKE VILLAGE UNIT No. 2D

PORTION OF SECTION 23 T13N R18E M.D.B. & M.  
DOUGLAS COUNTY, NEVADA

CHRISTOPH J. ALTEMUELLER, P.E.  
CONSULTING ENGINEER  
MINDEN, NEVADA

SCALE: 1" = 50' APRIL 1972  
SHEET 2 OF 2 SHEETS