

DRAWING NUMBER
Lake Village Unit 2C
Amd
PLAN HOLD CORPORATION • IRVINE, CALIFORNIA
REGISTERED PROFESSIONAL ENGINEER

DRAWING NUMBER
PLAN HOLD CORPORATION • IRVINE, CALIFORNIA
REGISTERED PROFESSIONAL ENGINEER

DRAWING NUMBER
PLAN HOLD CORPORATION • IRVINE, CALIFORNIA
REGISTERED PROFESSIONAL ENGINEER

DRAWING NUMBER
PLAN HOLD CORPORATION • IRVINE, CALIFORNIA
REGISTERED PROFESSIONAL ENGINEER

AMENDED MAP OF LAKE VILLAGE UNIT No.2C

AS RECORDED IN BOOK 97 AT PAGE 442
DOUGLAS COUNTY, NEVADA, RECORDS
BEING A PORTION OF SECTION 23, T13N, R18E, M.D.B.&M.

CHRISTOPH J. ALTEMUELLER. P.E.

CONSULTING ENGINEER
MINDEN, NEVADA
SCALE: 1"=50' NOVEMBER 1972

KNOWN ALL MEN BY THESE PRESENTS

That John C. Knorpp does hereby represent that he is the owner of Lots 11A and 11B as shown on this map. This map consisting of one sheet, and that he approved and accepts this map of said lands as shown in accordance with and for the uses and purposes set forth in the Nevada revised statutes 116 and 278 and subsequent amendments thereto, and Douglas County Ordinance 106.

John C. Knorpp
John C. Knorpp

KNOWN ALL MEN BY THESE PRESENTS

That Charles Neff does hereby represent that he is the owner of Lots 12A and 12B as shown on this map. This map consisting of one sheet, and that he approved and accepts this map of said lands as shown in accordance with and for the uses and purposes set forth in the Nevada revised statutes 116 and 278 and subsequent amendments thereto, and Douglas County Ordinance 106.

Charles Neff
Charles Neff

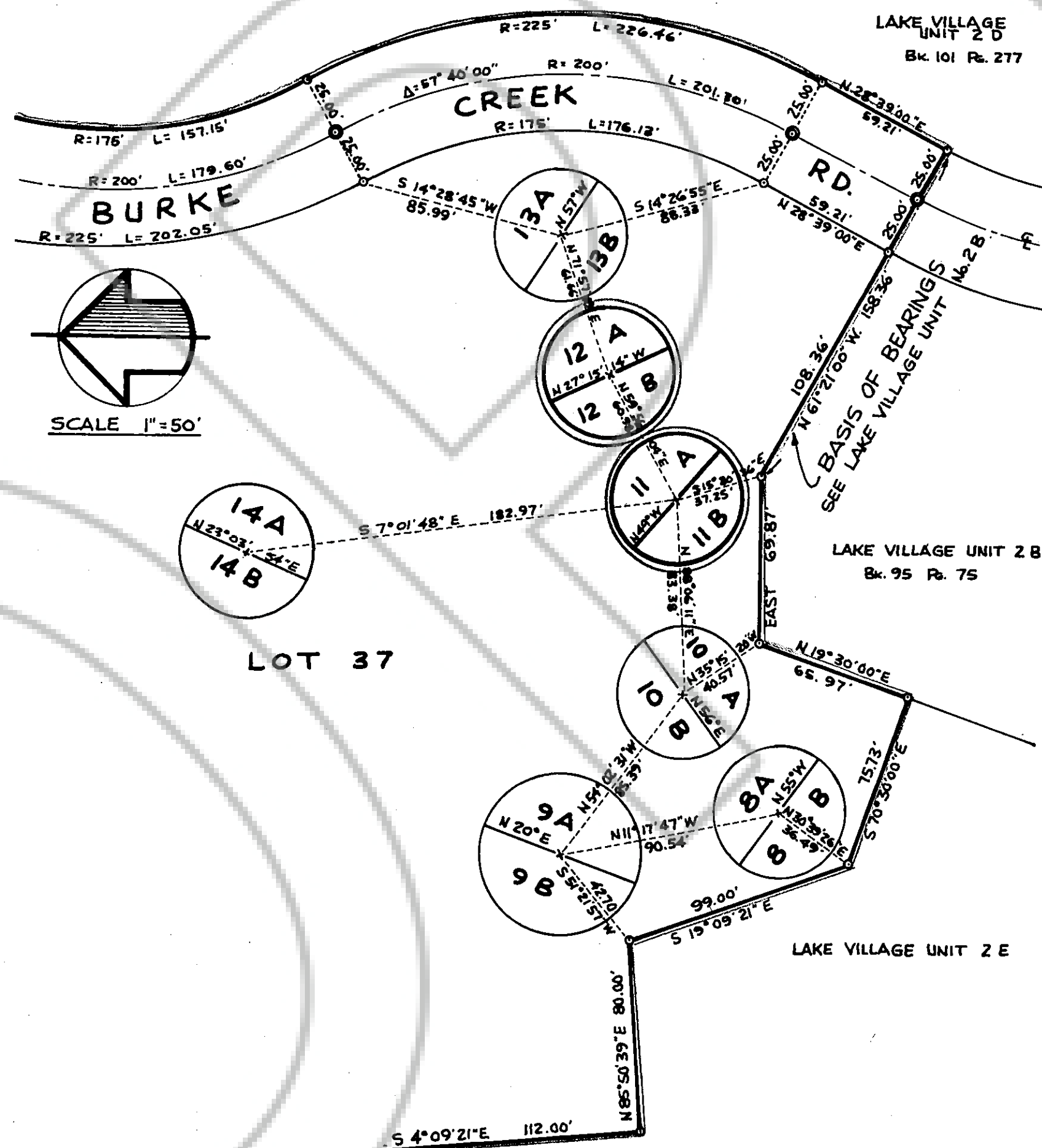
KNOWN ALL MEN BY THESE PRESENTS

That Lake Village Homeowners Association does hereby represent that it is the owner of Lot 37 Common Area as shown on this map. This map consisting of one sheet, and that it approved and accepts this map of said lands as shown in accordance with and for the uses and purposes set forth in the Nevada revised statutes 116 and 278 and subsequent amendments thereto, and Douglas County Ordinance 106.

Lake Village Homeowners Association
John C. Knorpp

I, John M. Stewart, do hereby certify that this map is a true and accurate map of the land surveyed by me and laid out into Lots and Streets and that the location of the Lots and Streets has been definitely established in strict accordance with the law and as shown hereon; That the Lots are situated wholly within Section 23, Township 13 North, Range 18 East, Mount Diablo Base and Meridian; That the survey was made during the month of October 1971; That the Monuments are sufficient to enable the survey to be retraced.

John M. Stewart
John M. Stewart, R.L.S. 2358



NOTE

This map is amended in order to relocate Lots 11A, 11B, 12A and 12B.

I, James Rankin, Engineer in and for the County of Douglas, State of Nevada, hereby certify that I have examined this map entitled "Amended Map of Lake Village Unit No. 2C" and that said map of said Subdivision is substantially as it appeared on the Tentative Map, that all conditions of state laws and local ordinances have been complied with and I am satisfied the same is technically correct.

James Rankin
Engineer for the County of Douglas
State of Nevada

STATE OF NEVADA
COUNTY OF DOUGLAS

On this 20th day of April in the year 1973 before me, Earnhart W. Thran, County Clerk in and for the County of Douglas, State of Nevada, personally appeared John C. Knorpp, Charles Neff and Lake Village Homeowners Association, known to me to be the persons who executed the foregoing instrument and upon oath did depose that they are the owners of the land described in this map; that the signatures to said instrument was executed by themselves freely and voluntarily for the uses and purposes therein mentioned.

In witness whereof I have hereunto set me hand and affixed my official seal at my office in said county, the day, month and year in this certification first above written.

Earnhart W. Thran
County Clerk in and for the County of Douglas, State of Nevada

STATE OF NEVADA
COUNTY OF DOUGLAS

I, Earnhart W. Thran, County Clerk in and for the County of Douglas, State of Nevada, do hereby certify that the above and foregoing plat entitled "Amended Map to the Amended Map of Lake Village Unit No. 1" was presented to the Board of Commissioners of Douglas County at a regular meeting thereof held on the 20th day of April 1973, and that said Board of Commissioners did thereon be resolution duly passed and adopted at said meeting approve and accept said map.

Earnhart W. Thran
County Clerk in and for the County of Douglas, State of Nevada

Doc #65826

Filed for Record at the request of *Ferschler & Sons* on the 27th day of April 1973 at 30 minutes past 12 o'clock P.M. Records of Douglas County, Nevada. Book 473 Page 1145

Patricia J. Stanley
Pat Stanley, County Recorder in and for the County of Douglas, State of Nevada

This is to certify that John C. Knorpp, Charles Neff and Lake Village Homeowners Association are the only parties having record title interest in the tract of land represented on this map.

John R. Cooper
FIRST AMERICAN TITLE
COMPANY OF NEVADA

SHEET 1 OF SHEET 1 572-54

SEE CERTIFICATE OF AMENDMENT
DOCUMENT # 17211 BOOK 174 PAGE 1838
LAKE VILLAGE 2C