

DRAWING NUMBER  
Gardnerville Ranchos #6  
Sheet 1 of 16  
PLAN HOLD CORPORATION • IRVINE, CALIFORNIA  
REGISTERED PROFESSIONAL

DRAWING NUMBER  
PLAN HOLD CORPORATION • IRVINE, CALIFORNIA  
REGISTERED PROFESSIONAL

DRAWING NUMBER  
PLAN HOLD CORPORATION • IRVINE, CALIFORNIA  
REGISTERED PROFESSIONAL

DRAWING NUMBER  
PLAN HOLD CORPORATION • IRVINE, CALIFORNIA  
REGISTERED PROFESSIONAL

# GARDNERVILLE RANCHOS UNIT No. 6

BEING A SUBDIVISION OF THE NORTHEAST 1/4, SECTION 21, AND THE SOUTH 1/2 OF THE NORTHWEST 1/4, SECTION 22, T12N, R20E M.D.M. IN THE COUNTY OF DOUGLAS, STATE OF NEVADA  
REVISING THE WEST 1/2 OF GARDNERVILLE RANCHOS UNIT NO. 5 AS PROVIDED IN N.R.S. 116.120

ENGINEERS LTD. INC.  
P.O. BOX 616  
ZEPHYR COVE, NEVADA, 89448

### OWNERS CERTIFICATE

I, SIERRA CHARTER CORPORATION OF NEVADA DOES HEREBY REPRESENT THAT THEY ARE THE OWNERS OF THE LAND DESCRIBED BY THIS MAP CONSISTING OF SIXTEEN SHEETS AND THAT THEY APPROVE AND ACCEPT THIS MAP OF SAID LANDS AS SHOWN IN ACCORDANCE WITH AND FOR THE PURPOSES SET FORTH IN THE NEVADA REVISED STATUTES 170 AND 278 AND ALL SUBSEQUENT AMENDMENTS THERETO AND DOUGLAS COUNTY ORDINANCES NO. 153, AND DO HEREBY DEDICATE TO ANY AND ALL PUBLIC PURPOSES THOSE PORTIONS OF SAID LANDS DESIGNATED ON THIS MAP AS STREETS AND OTHER PUBLIC WAYS AND PUBLIC PLACES SHOWN HEREON AND ALSO OFFER FOR DEDICATION AND DO HEREBY DEDICATE FOR PARTICULAR PURPOSES THE FOLLOWING:

- A. RIGHTS OF WAY AND EASEMENTS FOR WATER, GAS, SEWER, AND DRAINAGE PIPES AND AND FOR POLES, ANCHORAGE AND GUNTS, AND OVERHEAD AND UNDERGROUND WIRES AND CONDUITS FOR ELECTRIC, TELEPHONE, AND TELEVISION SERVICES TOGETHER WITH ANY AND ALL APPURTENANCES PERTAINING THERETO, ON, OVER, ACROSS, AND UNDER THE 5 FEET OF LAND ADJACENT TO ALL LOT LINES AND REAR LOT LINES OF ALL LOTS, AND THE BORDERS OF ALL OPEN AREAS, AND ON, OVER, ACROSS, AND UNDER THE FRONT 10 FEET OF ALL LOTS ADJACENT TO ALL STREETS AND PUBLIC WAYS.
- B. EASEMENTS FOR UTILITY SERVICES; IN CONNECTION WITH THE CONSTRUCTION OF THE INITIAL SERVICES; THE RIGHT TO REMOVE TREES, AND FOR SUBSEQUENT MAINTENANCE OF SUCH SERVICES; THE RIGHT TO TRIM, LIMB, AND REMOVE BRUSH FROM TIME TO TIME ON, OVER, ACROSS AND UPON THOSE EASEMENTS DEDICATED HEREIN.
- C. EASEMENTS AS DELINEATED AND NOTED ON THE SUBDIVISION MAP, TOGETHER WITH EASEMENTS AND RIGHTS OF WAY AS MAY BE A MATTER OF RECORD.
- D. THE RIGHT OF INGRESS AND EGRESS FROM ALL EASEMENTS AND RIGHTS OF WAY OVER THE LANDS SHOWN ON THE SUBDIVISION MAP

Stanley J. Franklin

STATE OF NEVADA  
County of Douglas SS

ON May 17, 1973, BEFORE ME, THE UNDERSIGNED, A NOTARY PUBLIC IN AND FOR THE COUNTY OF DOUGLAS, STATE OF NEVADA, PERSONALLY APPEARED Stanley J. Franklin, KNOWN TO ME TO BE THE President OF SAID CORPORATION THAT EXECUTED THE WITHIN INSTRUMENT AND KNOWN TO ME TO BE THE PERSON WHO EXECUTED THE WITHIN INSTRUMENT ON BEHALF OF THE CORPORATION THEREIN NAMED, AND ACKNOWLEDGED TO ME THAT SUCH CORPORATION EXECUTED THE SAME. IN WITNESS WHEREOF, SAID CORPORATION HAS CAUSED ITS CORPORATE NAME AND SEAL TO BE AFFIXED HERETO AND THIS INSTRUMENT TO BE EXECUTED BY ITS DULY AUTHORIZED OFFICERS.

James D. Olson  
NOTARY PUBLIC  
MY COMMISSION EXPIRES 11/21/75

### SURVEYORS CERTIFICATE

I, EARL SWAN, DO HEREBY CERTIFY THAT THIS MAP IS A TRUE AND ACCURATE MAP OF THE LANDS SURVEYED BY ME, OR UNDER MY SUPERVISION, AND Laid OUT INTO LOTS AND STREETS AT THE INSTAANCE OF Sierra Charter Corp of NEVADA, AND THAT THE LOCATION OF THE LOTS AND STREETS HAS BEEN DEFINITELY ESTABLISHED IN ACCORDANCE WITH THE LAW AND AS SHOWN HEREON THAT THE LOTS AND STREETS HEREON LIE WHOLLY WITHIN THE NORTHEAST 1/4, SECTION 21, AND THE SOUTH 1/2 OF THE NORTHWEST 1/4, SECTION 22, T12N, R20E, M.D.M., THAT THE SURVEY WAS MADE DURING THE MONTHS OF MARCH AND APRIL, 1973, AND THAT THE MONUMENTS ARE SUFFICIENT TO ENABLE THE SURVEY TO BE RETRACED.

Earl Swan  
EARL SWAN R.L.S. 1635

### UTILITIES APPROVAL

THE UTILITY EASEMENTS ON THIS MAP HAVE BEEN CHECKED AND APPROVED AS ADEQUATE FOR THE INSTALLATION OF ELECTRIC, AND TELEPHONE SERVICES.

Ande Henke 7-May-73 J.F. Bellman 17-MAY-73  
SIERRA PACIFIC POWER CO. DATE CONTINENTAL TELEPHONE CO. DATE

### HEALTH DEPARTMENT APPROVAL

THIS FINAL MAP IS APPROVED BY THE HEALTH DIVISION OF THE DEPARTMENT OF HEALTH, WELFARE, AND REHABILITATION CONCERNING SEWAGE DISPOSAL, WATER POLLUTION, WATER QUALITY AND WATER QUANTITY IN ACCORDANCE WITH NEVADA REVISED STATUTES, CONCERNING WATER QUANTITY, APPROVAL IS SUBJECT TO THE LETTER OF CONFIRMATION BY THE STATE ENGINEER ON FILE WITH THIS OFFICE AND OPEN TO INSPECTION.

Ernest J. Seeger 5-15-73  
HEALTH DIVISION DATE

### GARDNERVILLE RANCHOS GENERAL IMPROVEMENT DISTRICT

THE GARDNERVILLE RANCHOS GENERAL IMPROVEMENT DISTRICT HEREBY ACCEPTS THOSE LANDS MENTIONED IN THE OWNERS CERTIFICATE (ABOVE) AS STREETS, PUBLIC WAYS, AND PUBLIC PLACES EXCLUSIVE OF THOSE LANDS ACCEPTED BY DOUGLAS COUNTY.

BY: C.E. Sniff Pass 5-15-73  
GARDNERVILLE RANCHOS GENERAL IMPROVEMENT DISTRICT

### COUNTY ENGINEERS CERTIFICATE

I, JAMES A. RANKIN, ENGINEER IN AND FOR THE COUNTY OF DOUGLAS, STATE OF NEVADA, HEREBY CERTIFY I HAVE EXAMINED THIS MAP ENTITLED GARDNERVILLE RANCHOS UNIT No. 6 AND THAT SAID MAP OF SAID SUBDIVISION IS SUBSTANTIALLY AS IT APPEARS ON THE TENTATIVE MAP, THAT ALL CONDITIONS OF STATE LAWS AND LOCAL ORDINANCES HAVE BEEN COMPLIED WITH AND I AM SATISFIED THE SAME IS TECHNICALLY CORRECT.

James A. Rankin 5/29/73  
ENGINEER IN AND FOR THE COUNTY OF DOUGLAS, STATE OF NEVADA DATE

### COUNTY CERTIFICATE

STATE OF NEVADA  
COUNTY OF DOUGLAS SS

I, EMMANUEL K. THAM, COUNTY CLERK IN AND FOR THE COUNTY OF DOUGLAS, STATE OF NEVADA, DO HEREBY CERTIFY THAT THIS PLAT ENTITLED GARDNERVILLE RANCHOS UNIT No. 6 WAS PRESENTED TO THE BOARD OF COMMISSIONERS OF DOUGLAS COUNTY AT A REGULAR MEETING THEREOF HELD ON THE 25th DAY OF May, 1973, AND THAT SAID BOARD OF COMMISSIONERS DID THEREON BY RESOLUTION, DULY PASSED AND ADOPTED AT SAID MEETING, APPROVE AND ACCEPT SAID MAP, AND DID ACCEPT THE DEDICATION FOR PUBLIC USE OF PARCELS NO. 706, 707, 714A AND 728, BUT DID NOT ACCEPT FOR PUBLIC USE ANY OF THE STREETS, ROADS OR EASEMENTS SHOWN THEREON, BUT DID RESERVE THE RIGHT TO ACCEPT SAID ROADS STREETS OR EASEMENTS AT ANY FUTURE DATE.

I FURTHER CERTIFY THAT ALL BONDS AS REQUIRED BY LAW TO ACCOMPANY THIS PLAT HAVE BEEN APPROVED BY SAID BOARD OF COMMISSIONERS AND FILED IN MY OFFICE, IN WITNESS WHEREOF I HEREBY SET MY HAND THIS 29th DAY OF May, 1973.

Emmanuel K. Tham  
COUNTY CLERK IN AND FOR THE COUNTY OF DOUGLAS, STATE OF NEVADA

### ACKNOWLEDGEMENT

STATE OF NEVADA  
COUNTY OF DOUGLAS SS

ON THIS 29 DAY OF May, 1973, BEFORE ME, EMMANUEL K. THAM, COUNTY CLERK IN AND FOR THE COUNTY OF DOUGLAS, STATE OF NEVADA, PERSONALLY APPEARED STANLEY J. FRANKLIN KNOWN TO ME TO BE THE PERSON WHO EXECUTED THE FOREGOING INSTRUMENT AND UPON OATH DID DEPOSE THAT HE IS PRESIDENT OF SIERRA CHARTER CORP. OF NEVADA, AS ABOVE DESIGNATED, THAT THE SIGNATURE TO SAID INSTRUMENT WAS EXECUTED BY HIM FREELY AND VOLUNTARILY FOR THE USES AND PURPOSES THEREIN MENTIONED. IN WITNESS WHEREOF I HAVE HEREBY SET MY HAND AND AFFIXED MY OFFICIAL SEAL AT MY OFFICE IN SAID COUNTY THE DAY, MONTH, AND YEAR IN THIS CERTIFICATE FIRST ABOVE WRITTEN.

Emmanuel K. Tham  
COUNTY CLERK IN AND FOR THE COUNTY OF DOUGLAS, STATE OF NEVADA

### PLANNING COMMISSION CERTIFICATE

REVIEWED, APPROVED, AND RECOMMENDED TO THE COUNTY COMMISSIONERS OF DOUGLAS COUNTY BY THE DOUGLAS COUNTY PLANNING COMMISSION ON THIS 18th DAY OF MAY, 1973.

James D. Olson  
CHAIRMAN, PLANNING COMMISSION, COUNTY OF DOUGLAS, STATE OF NEVADA

### TITLE CERTIFICATE

THIS IS TO CERTIFY THAT SIERRA CHARTER CORP OF NEVADA ARE THE ONLY PARTIES HAVING RECORDED TITLE INTEREST IN THE TRACT OF LAND REPRESENTED ON THIS MAP.

BY: James D. Olson May 17, 1973  
DATE

### RECORDERS CERTIFICATE

FILED FOR RECORD AT THE REQUEST OF Sierra Charter Corp ON THE 29th DAY OF May, 1973, AT 25 MINUTES PAST 4 O'CLOCK P.M., AS INSTRUMENT NO. 66512 IN BOOK 573 OF maps, PAGE 1026, RECORDS OF DOUGLAS COUNTY, NEVADA.

Patricia J. Stanley  
Douglas Co Recorder

GARDNERVILLE RANCHOS UNIT No. 6  
A SUBDIVISION OF THE NORTHEAST 1/4, SECTION 21, AND THE SOUTH 1/2 OF THE NORTHWEST 1/4, SECTION 22, T12N, R20E, M.D.M., COUNTY OF DOUGLAS, STATE OF NEVADA.  
MAY 1973 SHEET 1 OF 16 SHEETS

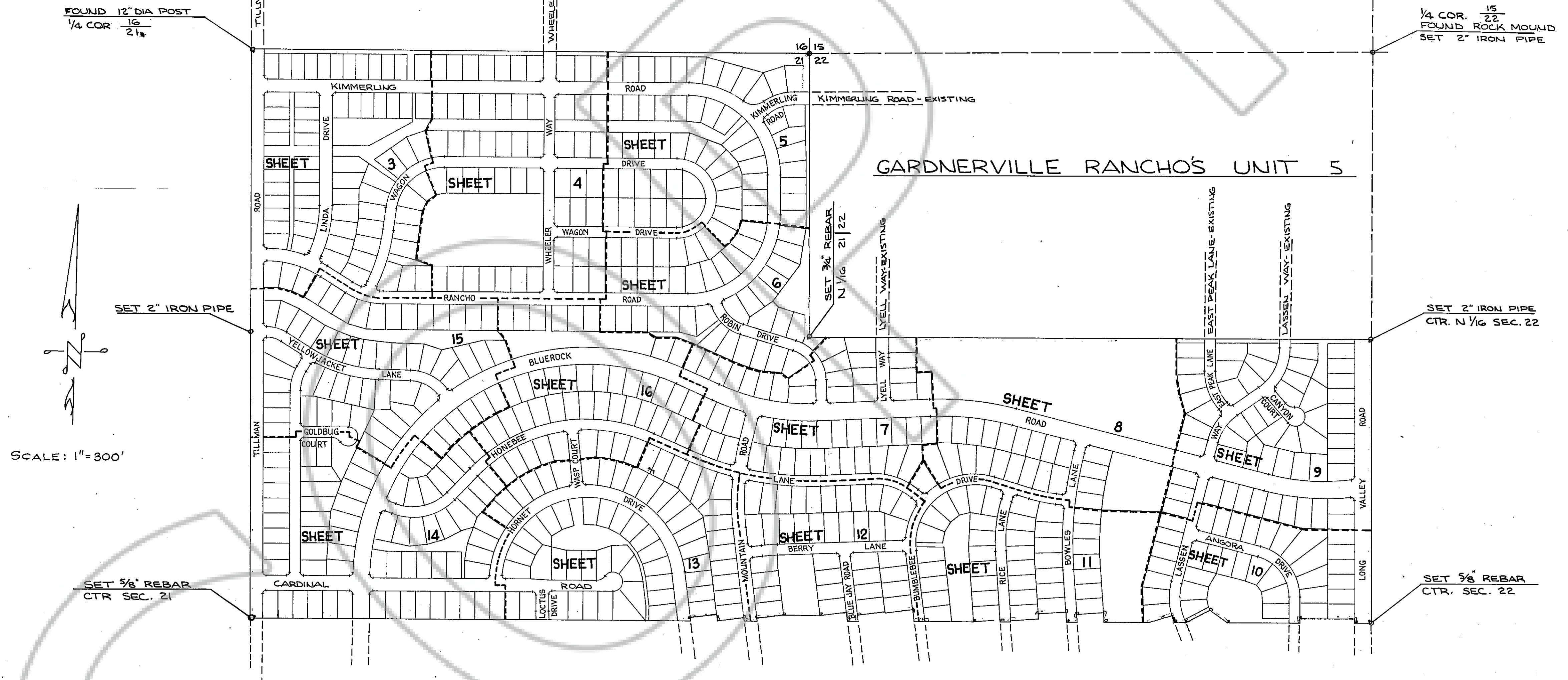
Earl Swan  
R.L.S. 1635



# GARDNERVILLE RANCHOS UNIT No. 6

GARDNERVILLE RANCHOS UNIT 4

GARDNERVILLE RANCHOS UNIT 5



SCALE: 1" = 300'

THE BASIS OF BEARING OF THIS SUBDIVISION IS IDENTICAL WITH GARDNERVILLE RANCHOS UNITS 1 THROUGH 5, RANCHO ESTATES AND ALL ARE BASED ON NEVADA DIVISION HIGHWAYS ALONG U.S. 395

A TOTAL OF 730 PARCELS  
(701 RESIDENTIAL LOTS)  
238.30 ACRES

- LEGEND**
- = FOUND MONUMENT
  - = CLASS 'A' MONUMENT SET AT INTERSECTION AND BEGINNING AND END OF CURVES
  - ⊥ = 5/8" REBAR SET AT ALL LOT CORNERS

DRAWING NUMBER  
Gardnerville Ranchos #6  
Sheet 2 of 16  
PLAN HOLD CORPORATION • IRVINE, CALIFORNIA  
REGISTERED PROFESSIONAL ARCHITECT

DRAWING NUMBER  
PLAN HOLD CORPORATION • IRVINE, CALIFORNIA  
REGISTERED PROFESSIONAL ARCHITECT

DRAWING NUMBER  
PLAN HOLD CORPORATION • IRVINE, CALIFORNIA  
REGISTERED PROFESSIONAL ARCHITECT

DRAWING NUMBER  
PLAN HOLD CORPORATION • IRVINE, CALIFORNIA  
REGISTERED PROFESSIONAL ARCHITECT



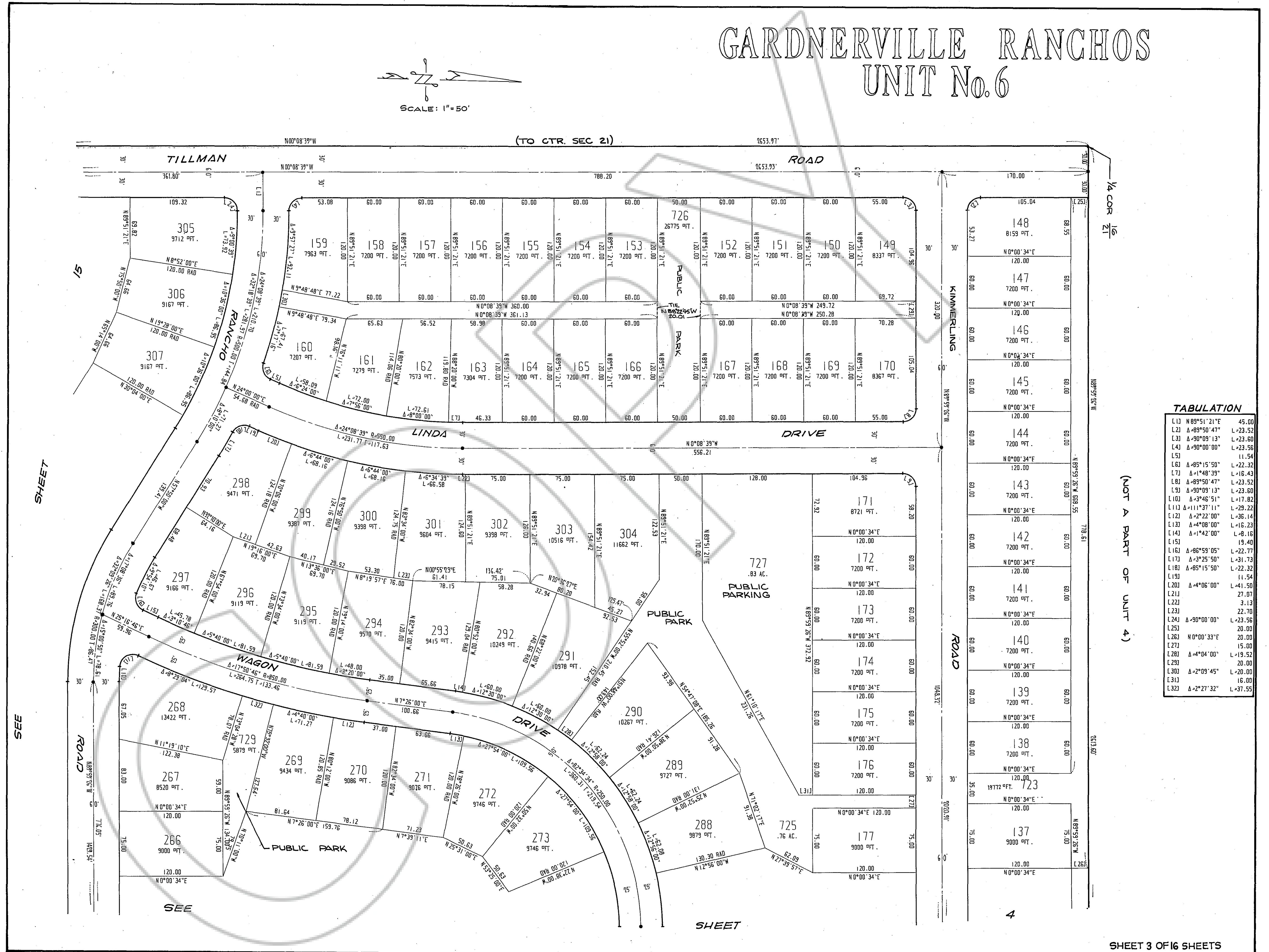
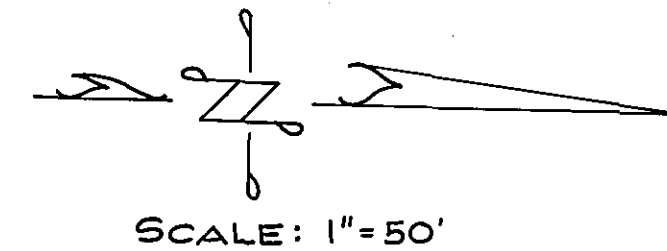
DRAWING NUMBER  
Gardner's Ranchos #6  
Sheet 3 of 16  
PLAN HOLD CORPORATION • IRVINE, CALIFORNIA  
RECORD BY NUMBER 02048

DRAWING NUMBER  
PLAN HOLD CORPORATION • IRVINE, CALIFORNIA  
RECORD BY NUMBER 02048

DRAWING NUMBER  
PLAN HOLD CORPORATION • IRVINE, CALIFORNIA  
RECORD BY NUMBER 02048

DRAWING NUMBER  
PLAN HOLD CORPORATION • IRVINE, CALIFORNIA  
RECORD BY NUMBER 02048

# GARDNERVILLE RANCHOS UNIT No. 6



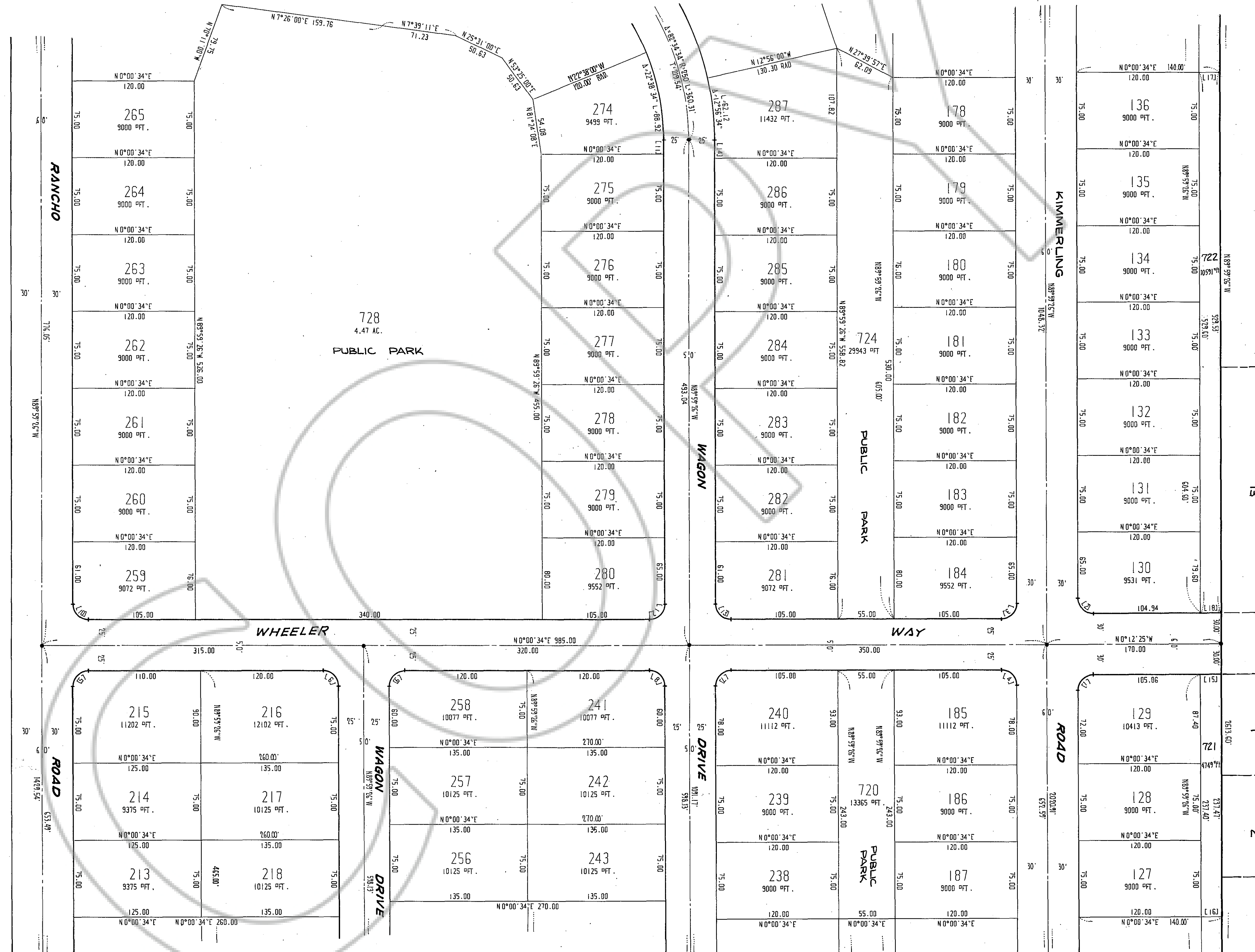
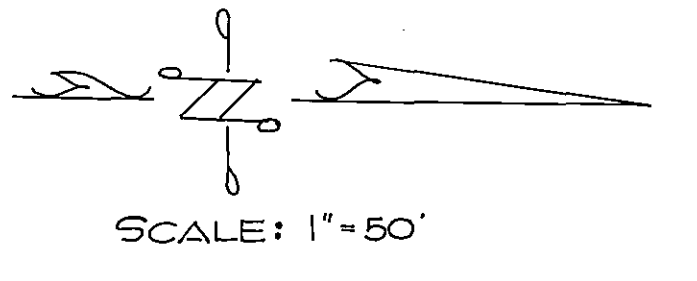
**TABULATION**

L13	N89°51'21"E	45.00
L21	A-89°50'47"	L-23.52
L31	A-90°09'13"	L-23.60
L41	A-90°00'00"	L-23.56
L51		11.54
L61	A-85°15'50"	L-22.32
L71	A-1°48'39"	L-16.43
L81	A-89°50'47"	L-23.52
L91	A-90°09'13"	L-23.60
L101	A-3°46'51"	L-17.82
L111	A-111°37'11"	L-36.14
L121	A-2°22'00"	L-16.14
L131	A-4°08'00"	L-16.23
L141	A-1°42'00"	L-16.16
L151		19.40
L161	A-86°59'05"	L-22.77
L171	A-3°25'50"	L-31.73
L181	A-85°15'50"	L-22.32
L191		11.54
L201	A-4°06'00"	L-41.50
L211		27.07
L221		3.13
L231		22.70
L241	A-90°00'00"	L-23.56
L251		20.00
L261	N0°00'33"E	L-20.00
L271		19.50
L281	A-4°04'00"	L-19.52
L291		20.00
L301	A-2°09'45"	L-20.00
L311		16.00
L321	A-2°27'32"	L-37.55

(NOT A PART OF UNIT 4)



# GARDNERVILLE RANCHOS UNIT No. 6



(NOT A PART OF UNIT 4)

L11	Δ-89°47'01"	L-23.51
L21	Δ-90°12'59"	L-23.62
L31	Δ-90°00'00"	L-23.56
L41	Δ-90°00'00"	L-23.56
L51	Δ-90°00'00"	L-23.56
L61	Δ-90°00'00"	L-23.56
L71	Δ-90°00'00"	L-23.56
L81	Δ-90°00'00"	L-23.56
L91	Δ-90°00'00"	L-23.56
L101	Δ-90°00'00"	L-23.56
L111		13.04
L121	Δ-90°00'00"	L-23.56
L131	Δ-90°00'00"	L-23.56
L141		17.04
L151		20.00
L161	N 0°00'33"E	20.00
L171	N 0°00'33"E	20.00
L181		20.00

GARDNERVILLE RANCHOS UNIT 4

DRAWING NUMBER  
Gardnerville Ranchos #6  
Sheet 4 of 6  
PLANNED CORPORATION • IRVINE, CALIFORNIA  
REGISTERED PROFESSIONAL ARCHITECT

DRAWING NUMBER  
PLANNED CORPORATION • IRVINE, CALIFORNIA  
REGISTERED PROFESSIONAL ARCHITECT

DRAWING NUMBER  
PLANNED CORPORATION • IRVINE, CALIFORNIA  
REGISTERED PROFESSIONAL ARCHITECT

DRAWING NUMBER  
PLANNED CORPORATION • IRVINE, CALIFORNIA  
REGISTERED PROFESSIONAL ARCHITECT

SEE

SHEET

15

SEE

SHEET

16

SEE SHEET 6

SEE

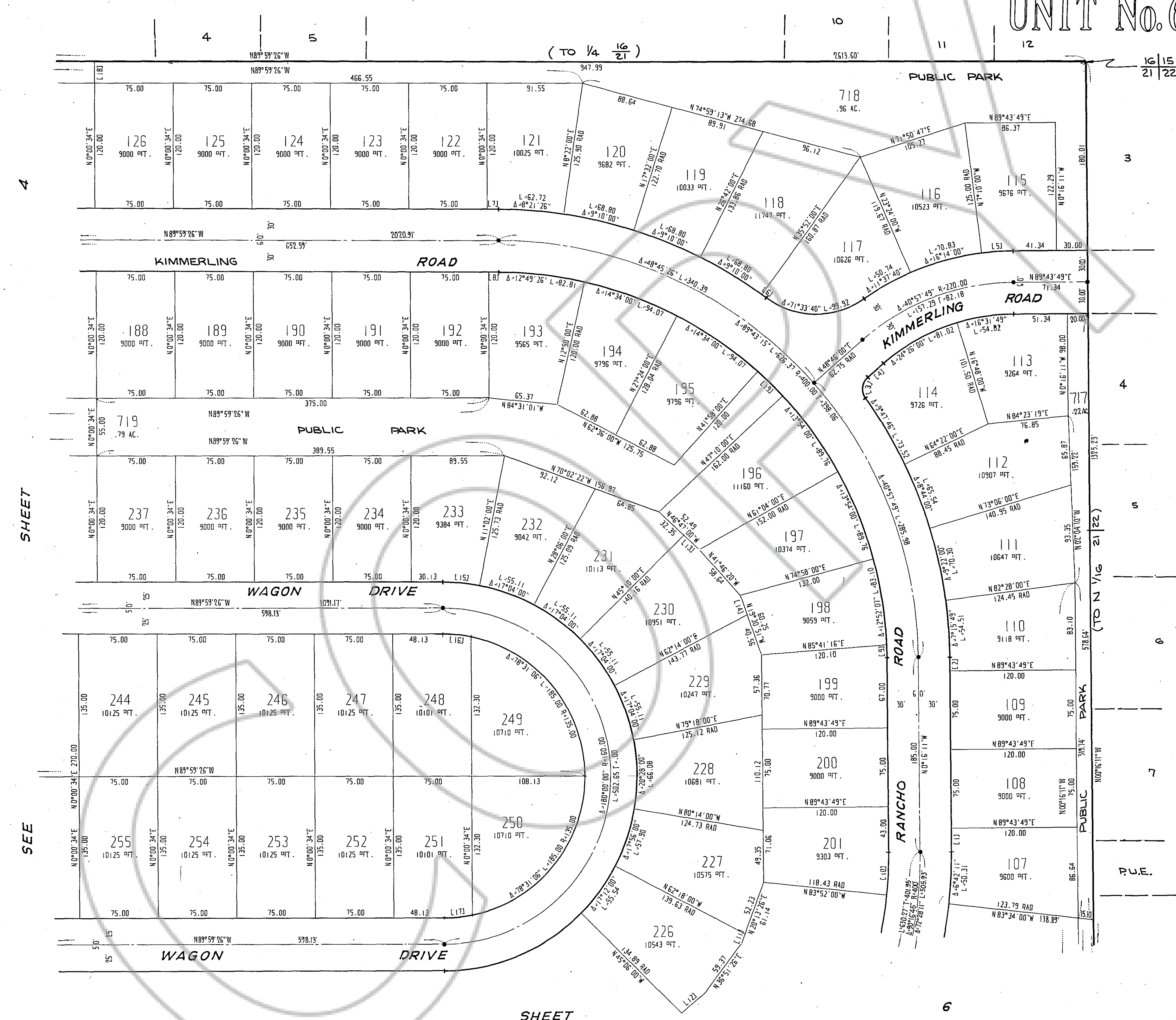
SHEET

5



# GARDNERVILLE RANCHOS UNIT No. 6

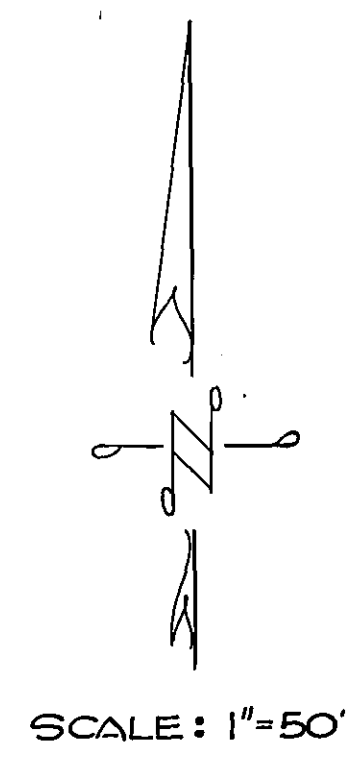
GARDNERVILLE RANCHO'S UNIT 4



**TABULATION**

L11	22.00	
L21	13.00	
L31	Δ-84°11'46"	L-22.04
L41	20.03	
L51	Δ-6°53'49"	L-30.09
L61	Δ-0°40'00"	L-5.00
L71	10.76	
L81	9.59	
L91	Δ-1°53'42"	L-12.24
L101	Δ-6°24'11"	L-41.35
L111	8.91	
L121	N49°18'53"E	L-29.20
L131	20.14	
L141	19.69	
L151	Δ-11°01'26"	L-35.59
L161	Δ-11°28'54"	L-27.05
L171	Δ-11°28'54"	L-27.05
L181	N0°00'33"E	20.00
L191	Δ-5°12'00"	L-33.58

R=135.00  
R=135.00



SHEET

SEE

SHEET

SEE

DRAWING NUMBER  
Gardnerville Ranchos #6  
Sheet 5 of 16  
PLAN HOLD CORPORATION • IRVINE, CALIFORNIA  
REGISTERED PROFESSIONAL

DRAWING NUMBER  
PLAN HOLD CORPORATION • IRVINE, CALIFORNIA  
REGISTERED PROFESSIONAL

DRAWING NUMBER  
PLAN HOLD CORPORATION • IRVINE, CALIFORNIA  
REGISTERED PROFESSIONAL

DRAWING NUMBER  
PLAN HOLD CORPORATION • IRVINE, CALIFORNIA  
REGISTERED PROFESSIONAL



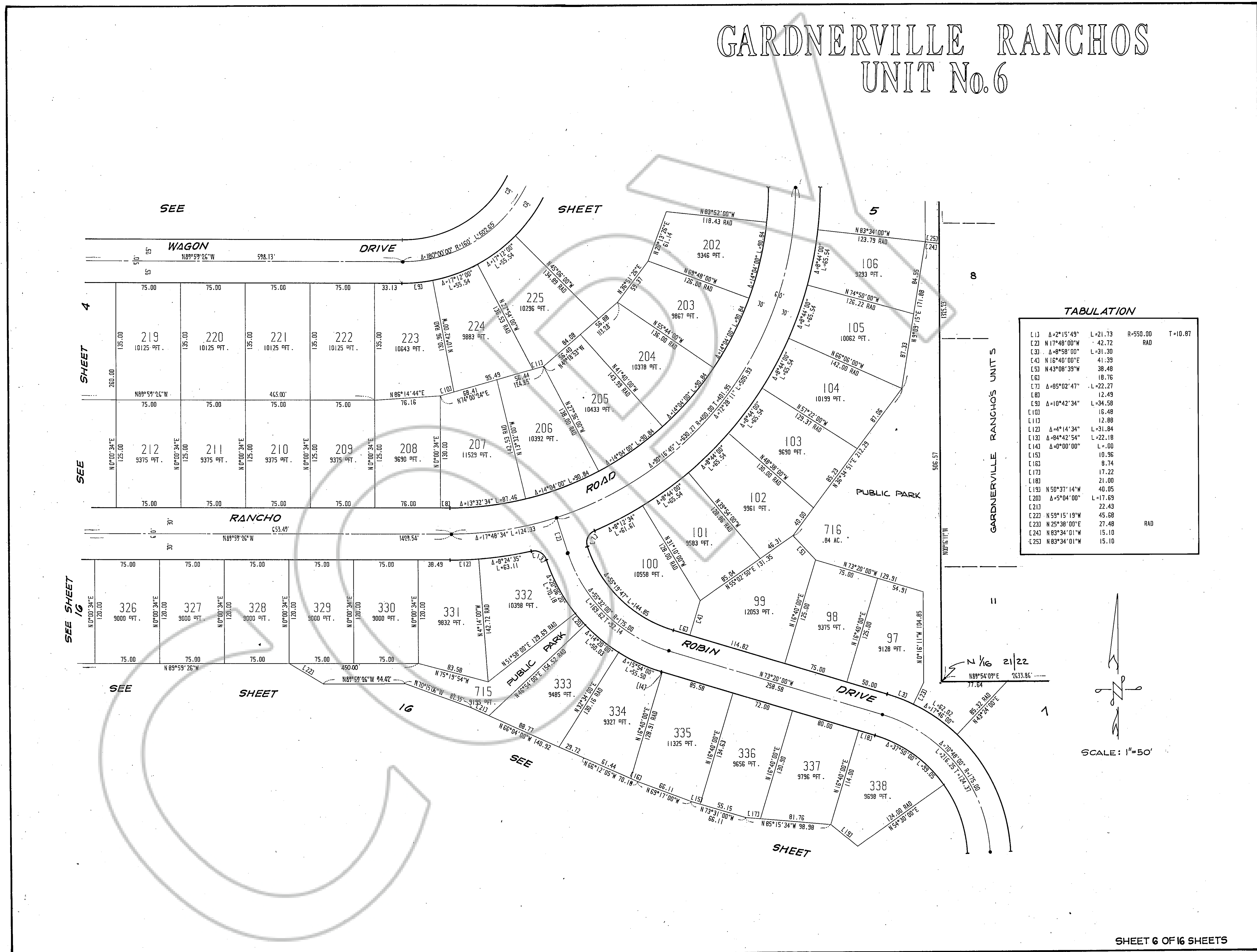
# GARDNERVILLE RANCHOS UNIT No. 6

DRAWING NUMBER  
**Gardnerville Ranchos #6**  
SHEET 6 OF 16  
PLAN HOLD CORPORATION • IRVINE, CALIFORNIA  
REVISION BY NUMBER/DATE

DRAWING NUMBER  
PLAN HOLD CORPORATION • IRVINE, CALIFORNIA  
REVISION BY NUMBER/DATE

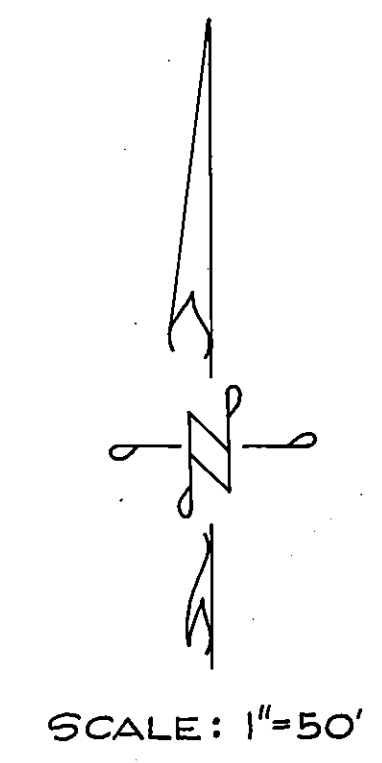
DRAWING NUMBER  
PLAN HOLD CORPORATION • IRVINE, CALIFORNIA  
REVISION BY NUMBER/DATE

DRAWING NUMBER  
PLAN HOLD CORPORATION • IRVINE, CALIFORNIA  
REVISION BY NUMBER/DATE



**TABULATION**

L13	Δ=2°15'49"	L=21.73	R=550.00	T=10.87
L23	Δ=17°48'00"	L=42.72		
L33	Δ=8°58'00"	L=31.30		
L43	Δ=16°40'00"	L=41.39		
L53	Δ=43°08'39"	L=38.48		
L63		L=18.76		
L73	Δ=65°02'47"	L=22.27		
L83		L=12.49		
L93	Δ=10°42'34"	L=34.58		
L103		L=16.48		
L113		L=12.88		
L123	Δ=4°14'34"	L=31.84		
L133	Δ=84°42'54"	L=22.18		
L143	Δ=0°00'00"	L=0.00		
L153		L=10.96		
L163		L=8.74		
L173		L=17.22		
L183		L=21.00		
L193	Δ=50°37'14"	L=40.05		
L203	Δ=5°04'00"	L=17.69		
L213		L=22.43		
L223	Δ=59°15'19"	L=45.68		
L233	Δ=25°38'00"	L=27.48		
L243	Δ=83°34'01"	L=15.10		
L253	Δ=83°34'01"	L=15.10		

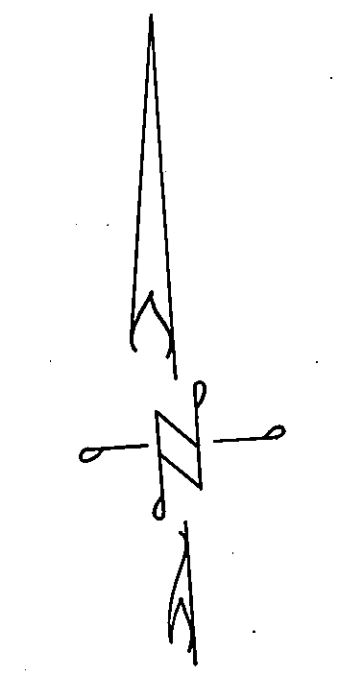




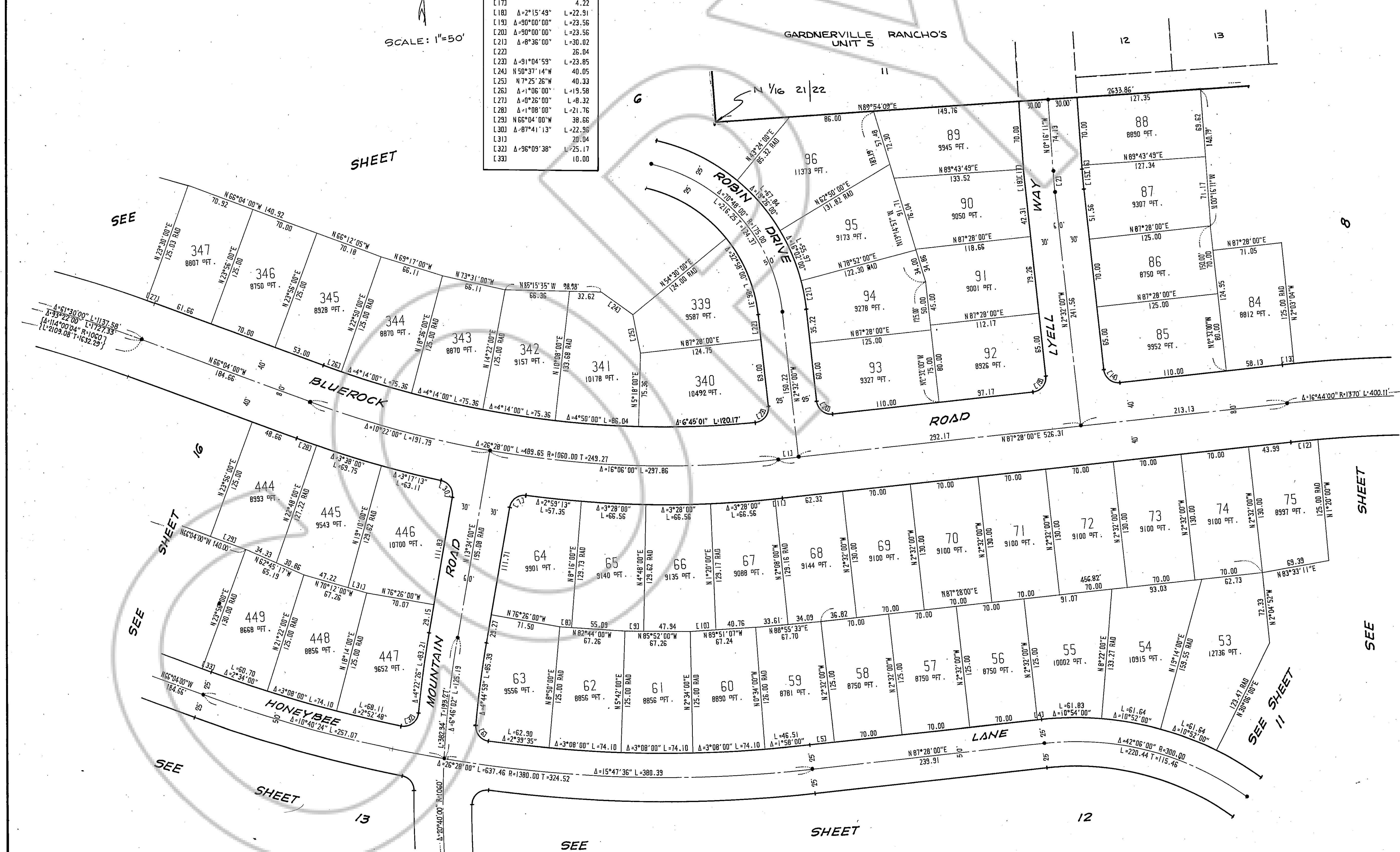
# GARDNERVILLE RANCHOS UNIT No. 6

## TABULATION

L13	21.00		
L23	Δ=2°15'49"	L=21.73	R=550.00 T=10.87
L33	N17°48'00"W	L=42.72	RAD
L43		4.41	
L53		25.50	
L63	Δ=87°19'27"	L=22.86	
L73	Δ=87°41'13"	L=22.96	
L83		12.17	
L93		19.32	
L103		26.48	
L113	Δ=0°24'00"	L=7.68	
L123	Δ=1°12'00"	L=27.86	
L133	Δ=0°28'56"	L=11.87	
L143	Δ=90°00'00"	L=23.56	
L153	Δ=2°15'49"	L=20.54	
L163		4.04	
L173		4.22	
L183	Δ=2°15'49"	L=22.91	
L193	Δ=90°00'00"	L=23.56	
L203	Δ=90°00'00"	L=23.56	
L213	Δ=8°36'00"	L=30.02	
L223		26.04	
L233	Δ=91°04'59"	L=23.85	
L243	N50°37'14"W	40.05	
L253	N7°25'26"W	40.33	
L263	Δ=1°06'00"	L=19.58	
L273	Δ=0°26'00"	L=8.32	
L283	Δ=1°08'00"	L=21.76	
L293	N65°04'00"W	38.66	
L303	Δ=87°41'13"	L=22.96	
L313		20.04	
L323	Δ=96°09'38"	L=25.17	
L333		10.00	



SCALE: 1"=50'



SEE SHEET

SEE SHEET

SEE SHEET

SEE SHEET

SEE

SHEET

SEE SHEET 11



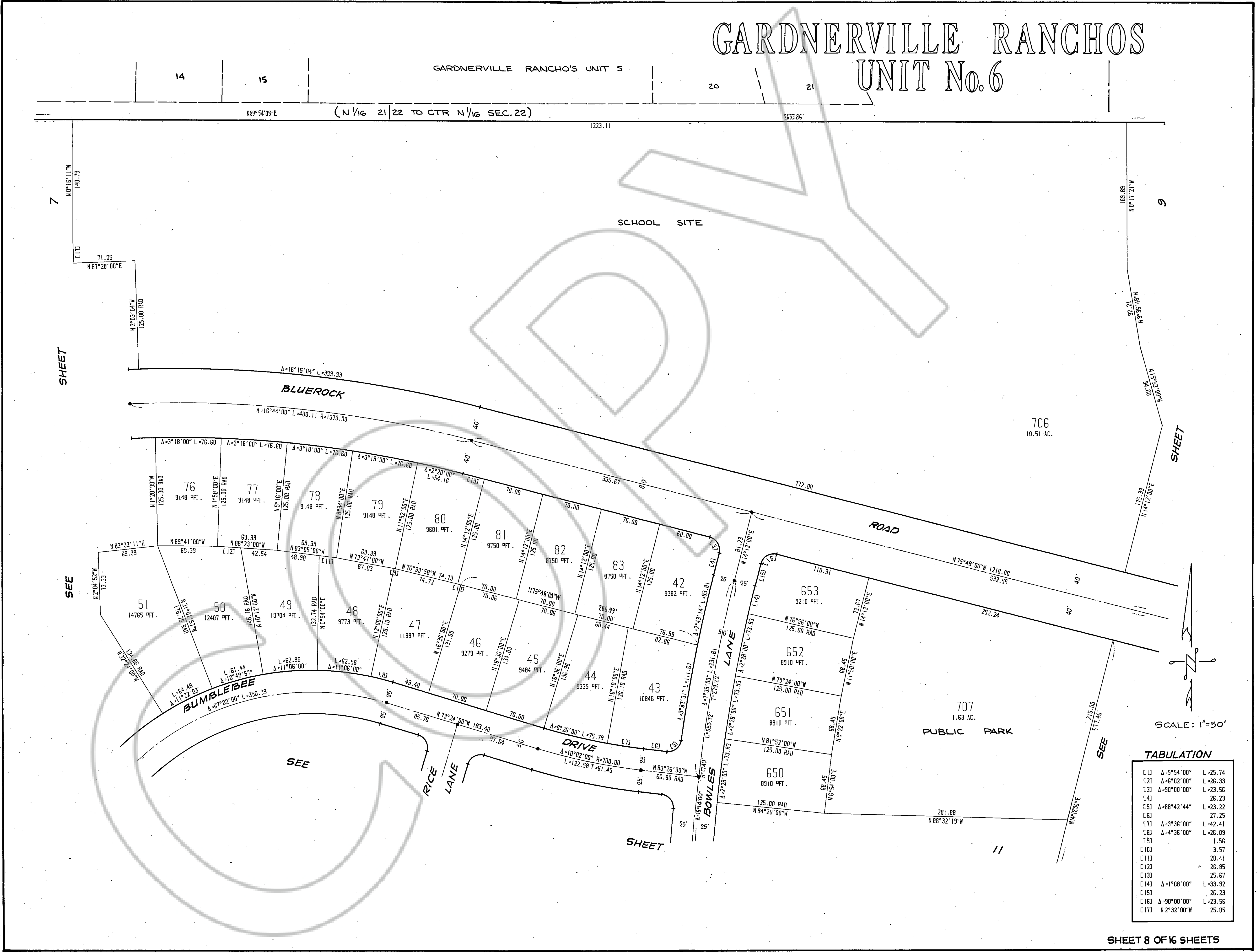
DRAWING NUMBER  
Gardnerville Ranchos #6  
Sheet 8 of 16  
PLAN HOLD CORPORATION  
IRVINE, CALIFORNIA  
REGISTERED PROFESSIONAL ENGINEER

DRAWING NUMBER  
PLAN HOLD CORPORATION  
IRVINE, CALIFORNIA  
REGISTERED PROFESSIONAL ENGINEER

DRAWING NUMBER  
PLAN HOLD CORPORATION  
IRVINE, CALIFORNIA  
REGISTERED PROFESSIONAL ENGINEER

DRAWING NUMBER  
PLAN HOLD CORPORATION  
IRVINE, CALIFORNIA  
REGISTERED PROFESSIONAL ENGINEER

# GARDNERVILLE RANCHOS UNIT No. 6



**TABULATION**

E 13	Δ=5°54'00"	L=25.74
E 22	Δ=6°02'00"	L=26.33
E 31	Δ=9°00'00"	L=23.56
E 43		L=26.23
E 53	Δ=88°42'44"	L=23.22
E 63		L=27.25
E 73	Δ=3°36'00"	L=42.41
E 83	Δ=4°36'00"	L=26.09
E 93		L=1.56
E 103		L=3.57
E 113		L=20.41
E 123		L=26.85
E 133		L=25.67
E 143	Δ=1°08'00"	L=33.92
E 153		L=26.23
E 163	Δ=9°00'00"	L=23.56
E 173	N 2°32'00"W	L=25.05

SCALE: 1"=50'



DRAWING NUMBER  
Gardnerville Ranchos #6  
Sheet 9 of 16  
PLAN HOLD CORPORATION • IRVINE, CALIFORNIA  
RECORDED BY NUMBER 07048

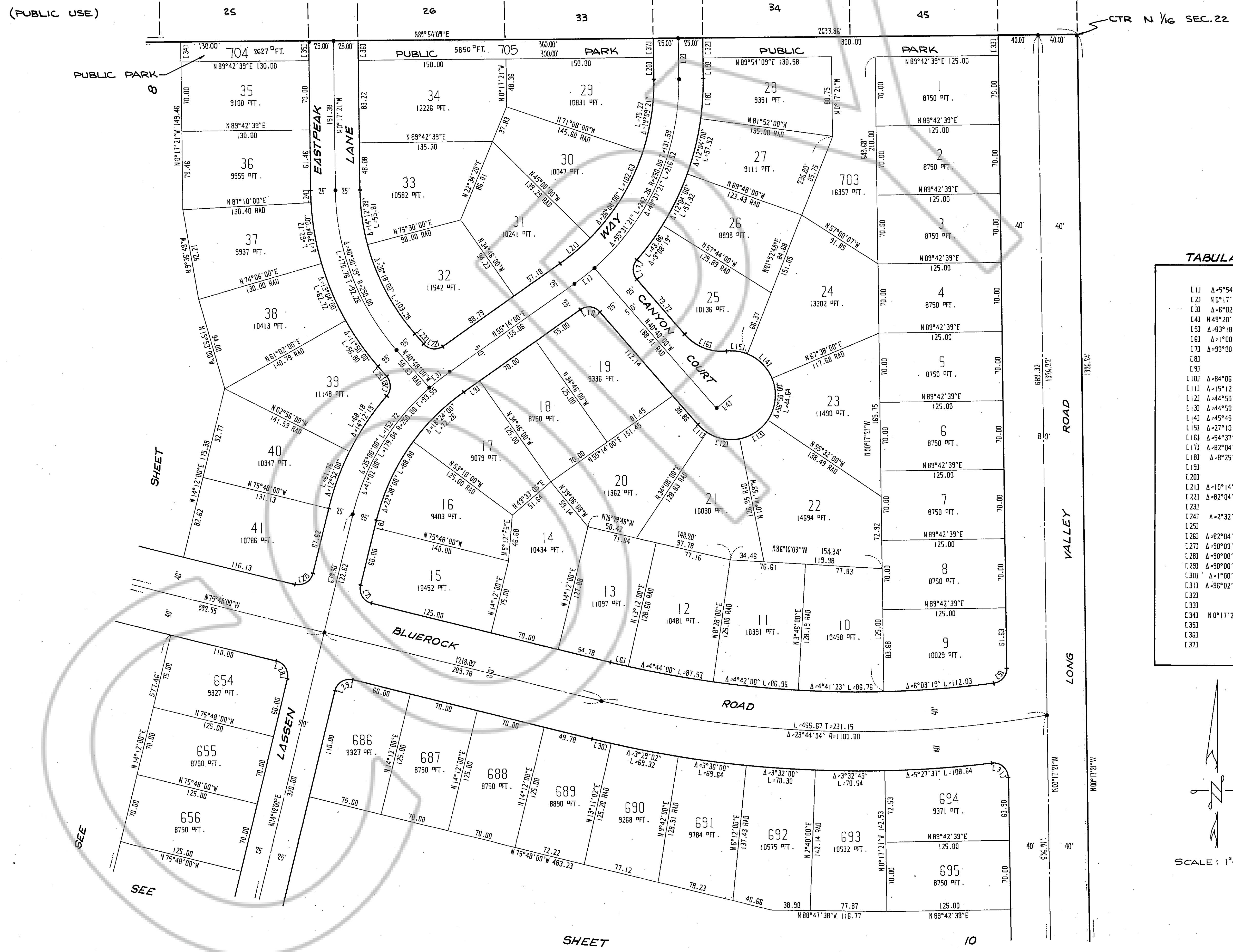
DRAWING NUMBER  
PLAN HOLD CORPORATION • IRVINE, CALIFORNIA  
RECORDED BY NUMBER 07048

DRAWING NUMBER  
PLAN HOLD CORPORATION • IRVINE, CALIFORNIA  
RECORDED BY NUMBER 07048

DRAWING NUMBER  
PLAN HOLD CORPORATION • IRVINE, CALIFORNIA  
RECORDED BY NUMBER 07048

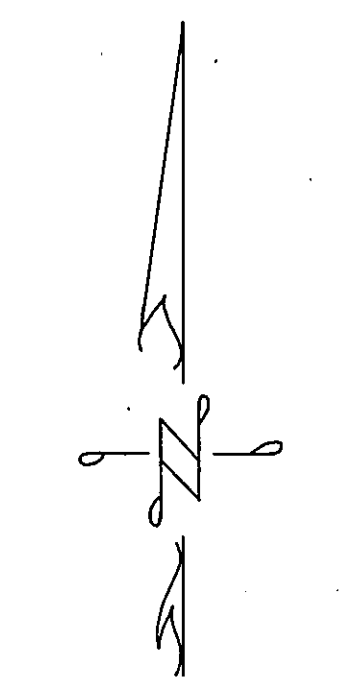
# GARDNERVILLE RANCHOS UNIT No. 6

GARDNERVILLE RANCHOS UNITS



**TABULATION**

L11	Δ-5°54'00"	L-25.74
L22	N0°17'21"W	41.22
L33	Δ-6°02'00"	L-26.33
L44	N49°20'00"E	20.00
L55	Δ-83°18'38"	L-21.81
L66	Δ-1°00'00"	L-18.50
L77	Δ-90°00'00"	L-23.56
L88		7.62
L99		19.82
L100	Δ-84°06'00"	L-22.02
L111	Δ-15°12'00"	L-11.94
L122	Δ-44°50'00"	L-35.21
L133	Δ-44°50'00"	L-35.21
L144	Δ-45°45'12"	L-35.93
L155	Δ-27°10'13"	L-21.34
L166	Δ-54°37'24"	L-47.67
L177	Δ-82°04'19"	L-21.49
L188	Δ-82°25'21"	L-40.43
L199		21.13
L200		22.30
L211	Δ-10°14'00"	L-40.19
L222	Δ-82°04'19"	L-21.49
L233		13.40
L244	Δ-2°32'39"	L-12.21
L255		13.40
L266	Δ-82°04'19"	L-21.49
L277	Δ-90°00'00"	L-23.56
L288	Δ-90°00'00"	L-23.56
L299	Δ-90°00'00"	L-23.56
L300	Δ-1°00'58"	L-20.22
L311	Δ-96°02'59"	L-25.15
L322		20.00
L333		20.00
L344	N0°17'21"W	20.43
L355		20.00
L366		20.00
L377		19.00



SCALE: 1"=50'

(PUBLIC USE)

CTR N 1/16 SEC. 22

SHEET

SHEET

10



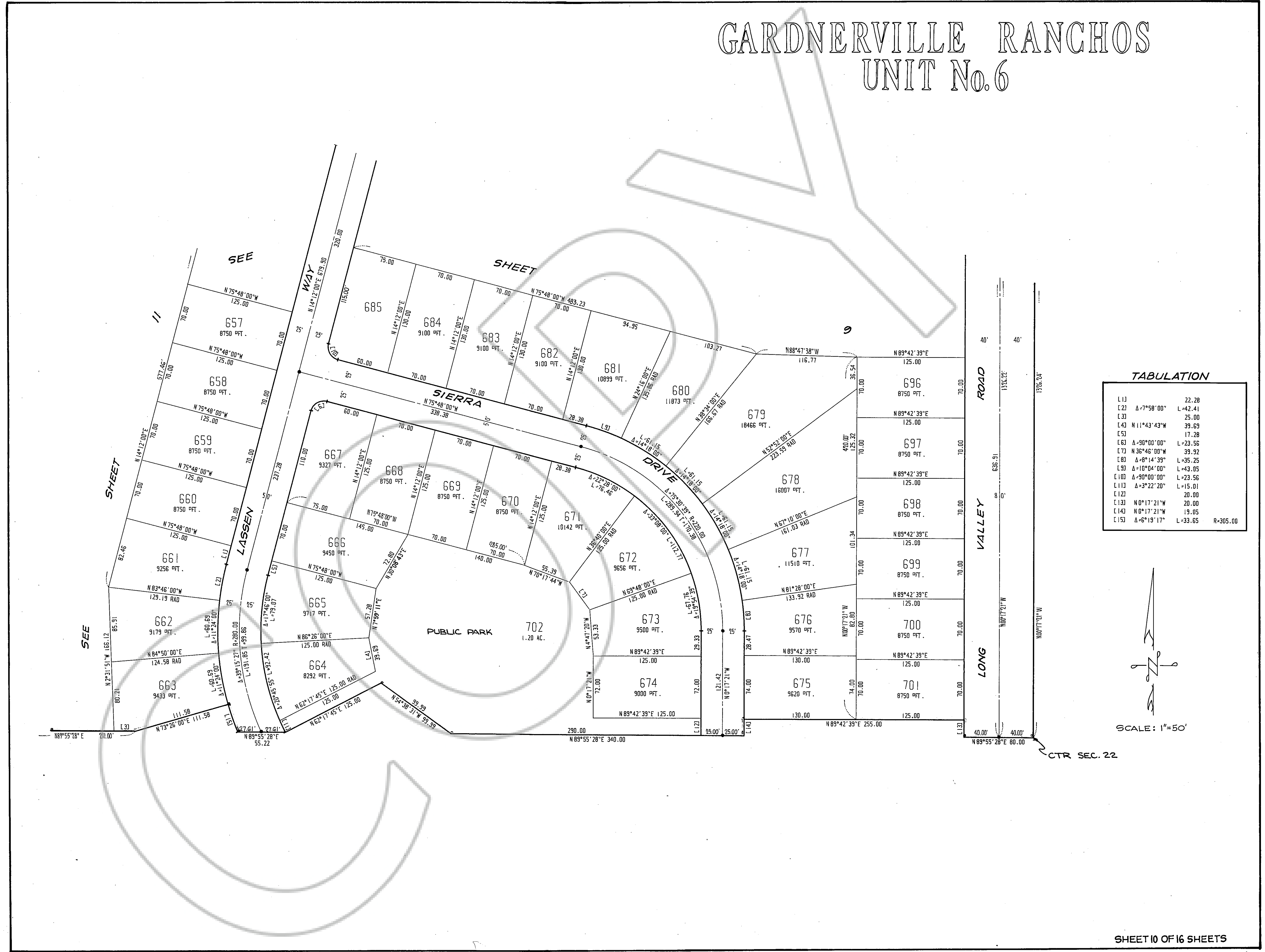
# GARDNERVILLE RANCHOS UNIT No. 6

DRAWING NUMBER  
Gardnerville Ranchos #6  
Sheet 10 of 16  
PLAN HOLD CORPORATION • IRVINE, CALIFORNIA  
REGISTERED NUMBER 00048

DRAWING NUMBER

DRAWING NUMBER

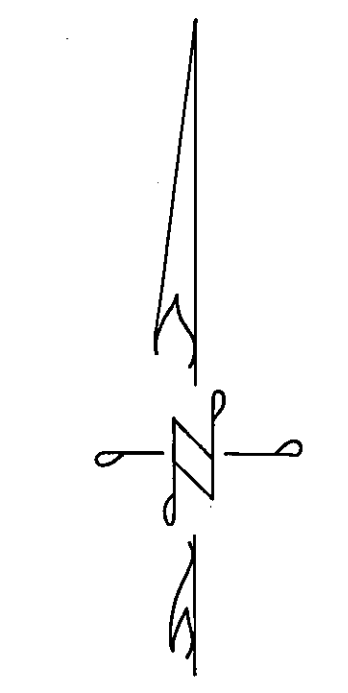
DRAWING NUMBER



**TABULATION**

L11		22.28
L21	$\Delta=7^{\circ}58'00''$	L=42.41
L31		25.00
L41	$N11^{\circ}43'43''W$	39.69
L51		17.28
L61	$\Delta=90^{\circ}00'00''$	L=23.56
L71	$N36^{\circ}46'00''W$	39.92
L81	$\Delta=8^{\circ}14'39''$	L=35.25
L91	$\Delta=10^{\circ}04'00''$	L=43.05
L101	$\Delta=90^{\circ}00'00''$	L=23.56
L111	$\Delta=3^{\circ}22'20''$	L=15.01
L121		20.00
L131	$N0^{\circ}17'21''W$	20.00
L141	$N0^{\circ}17'21''W$	19.05
L151	$\Delta=6^{\circ}19'17''$	L=33.65

R=305.00



SCALE: 1"=50'

CTR SEC. 22



# GARDNERVILLE RANCHOS UNIT No. 6

DRAWING NUMBER  
*Gardner's Ranchos #6*  
Sheet 11 of 16  
PLANT HOLD CORPORATION • RANCHO, CALIFORNIA  
REGISTERED BY INSTRUMENT

DRAWING NUMBER  
PLANT HOLD CORPORATION • RANCHO, CALIFORNIA  
REGISTERED BY INSTRUMENT

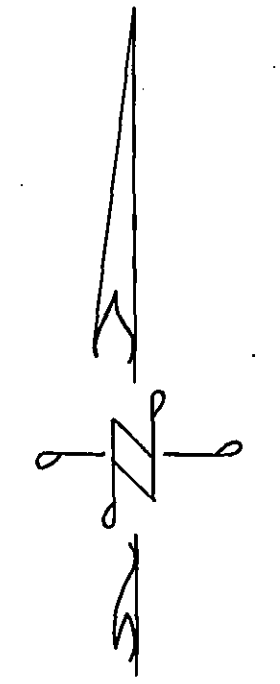
DRAWING NUMBER  
PLANT HOLD CORPORATION • RANCHO, CALIFORNIA  
REGISTERED BY INSTRUMENT

DRAWING NUMBER  
PLANT HOLD CORPORATION • RANCHO, CALIFORNIA  
REGISTERED BY INSTRUMENT

### TABULATION

L 11	Δ=5°06'00"	L=26.70
L 21	Δ=83°14'37"	L=21.79
L 31		25.87
L 41	Δ=3°49'46"	L=18.38
L 51	Δ=4°42'00"	L=22.56
L 61	Δ=90°00'00"	L=23.56
L 71		22.68
L 81	Δ=2°18'21"	L=27.77
L 91	Δ=1°50'00"	L=20.48
L 101		22.68
L 111	Δ=90°00'00"	L=23.56
L 121		27.25
L 131	Δ=88°42'44"	L=23.22
L 141		14.67
L 151		25.09
L 161	Δ=0°24'00"	L=12.32
L 171		1.93
L 181	Δ=4°10'14"	L=20.02
L 191	Δ=6°19'17"	L=33.65
L 201	N 4°02'00"W	44.65
L 211	N 4°02'00"W	36.00
L 221	N 4°02'00"W	23.80
L 231	N 4°01'59"W	5.00
L 241	N 4°02'00"W	8.65

R=305.00



SCALE: 1"=50'





# GARDNERVILLE RANCHOS UNIT No. 6

DRAWING NUMBER  
**Gardnerville Ranchos #1**  
Sheet 12 of 16  
PLANNED CORPORATION • IRVINE, CALIFORNIA  
REGISTERED PROFESSIONAL ARCHITECT

DRAWING NUMBER  
PLANNED CORPORATION • IRVINE, CALIFORNIA  
REGISTERED PROFESSIONAL ARCHITECT

DRAWING NUMBER  
PLANNED CORPORATION • IRVINE, CALIFORNIA  
REGISTERED PROFESSIONAL ARCHITECT

DRAWING NUMBER  
PLANNED CORPORATION • IRVINE, CALIFORNIA  
REGISTERED PROFESSIONAL ARCHITECT



### TABULATION

L11	Δ-5°06'00"	L-26.70
L21	Δ-9°00'00"	L-23.56
C31	Δ-84°54'00"	L-22.23
C41	Δ-95°06'00"	L-24.90
E51		25.77
E61		9.69
L71		12.36
E81	Δ-1°02'00"	L-14.88
E91	Δ-9°00'00"	L-23.56
L101		12.83
L111	Δ-96°55'50"	L-25.38
L121		16.05
L131		25.87
L141	Δ-83°14'37"	L-21.79
L151	Δ-83°14'37"	L-21.79
L161	Δ-84°54'00"	L-22.23
L171	N7°06'00"W	L-5.53
L181	N7°06'00"W	29.07
L191	N7°06'00"W	42.05
L201	N7°06'01"W	12.30
L211	N7°06'00"W	15.42

SCALE: 1"=50'



DRAWING NUMBER  
Gardnerville Ranchos #6  
Sheet 13 of 16  
PLANT HOLD CORPORATION • IRVINE, CALIFORNIA  
REDCROSS BY NUMBER 02/04R

DRAWING NUMBER

DRAWING NUMBER

DRAWING NUMBER

**TABULATION**

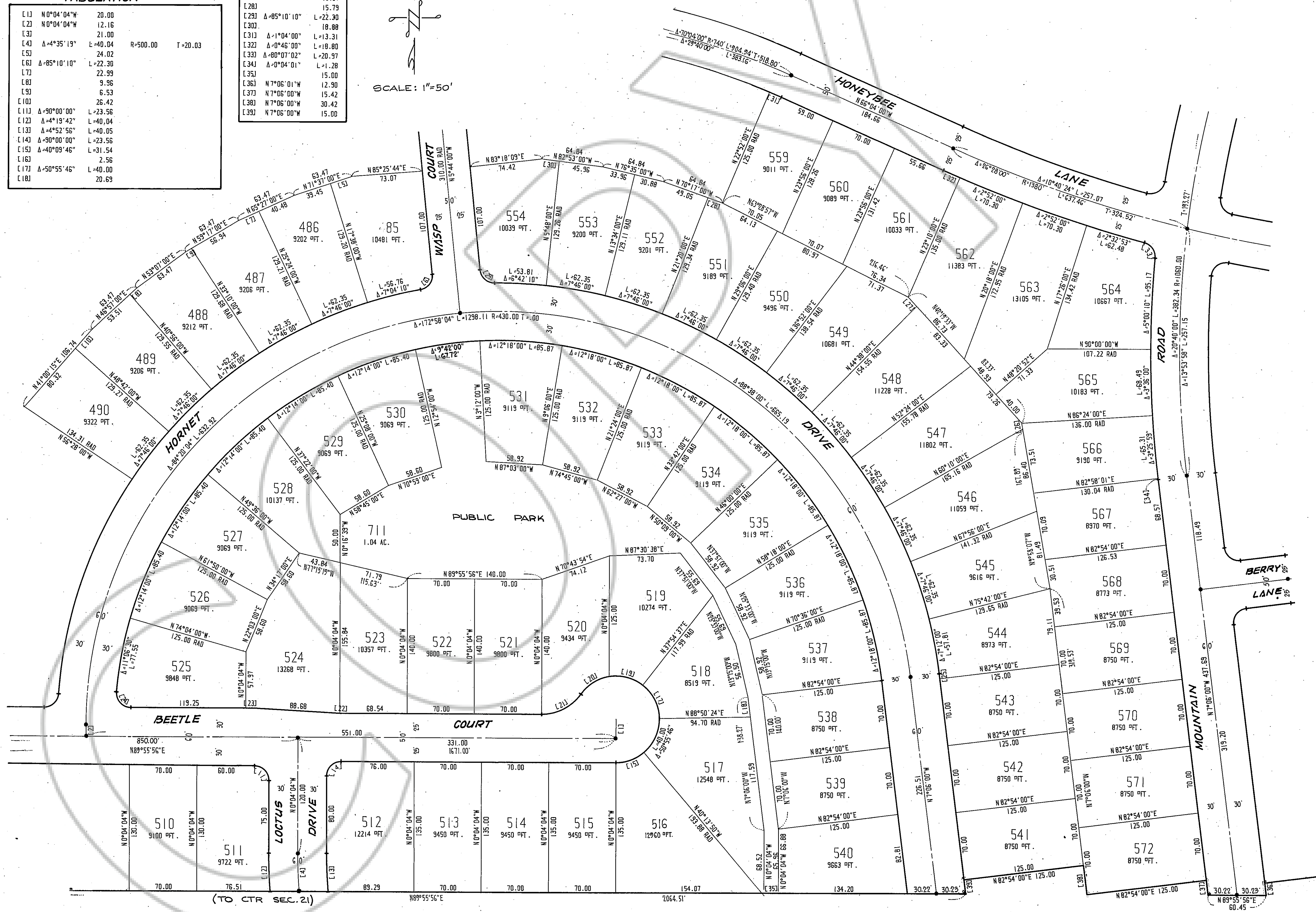
L11	N0°04'04"W	20.00
L21	N0°04'04"W	12.16
L31		21.00
L41	Δ=4°35'19"	L=40.04
L51		24.02
L61	Δ=85°10'10"	L=22.30
L71		22.99
L81		9.96
L91		6.53
L101		26.42
L111	Δ=90°00'00"	L=23.56
L121	Δ=4°19'42"	L=40.04
L131	Δ=4°52'56"	L=40.05
L141	Δ=90°00'00"	L=23.56
L151	Δ=40°09'46"	L=31.54
L161		2.56
L171	Δ=50°55'46"	L=40.00
L181		20.69

**TABULATION**

L191	Δ=47°31'12"	L=37.32
L201	Δ=45°04'53"	L=35.41
L211	Δ=54°37'24"	L=47.67
L221		1.46
L231		9.35
L241	Δ=94°53'34"	L=24.84
L251		5.21
L261		6.21
L271		13.07
L281		15.79
L291	Δ=85°10'10"	L=22.30
L301		18.88
L311	Δ=1°04'00"	L=13.31
L321	Δ=0°46'00"	L=18.80
L331	Δ=80°07'02"	L=20.97
L341	Δ=0°04'01"	L=1.28
L351		15.00
L361	N7°06'01"W	12.90
L371	N7°06'00"W	15.42
L381	N7°06'00"W	30.42
L391	N7°06'00"W	15.00

SCALE: 1"=50'

# GARDNERVILLE RANCHOS UNIT No. 6

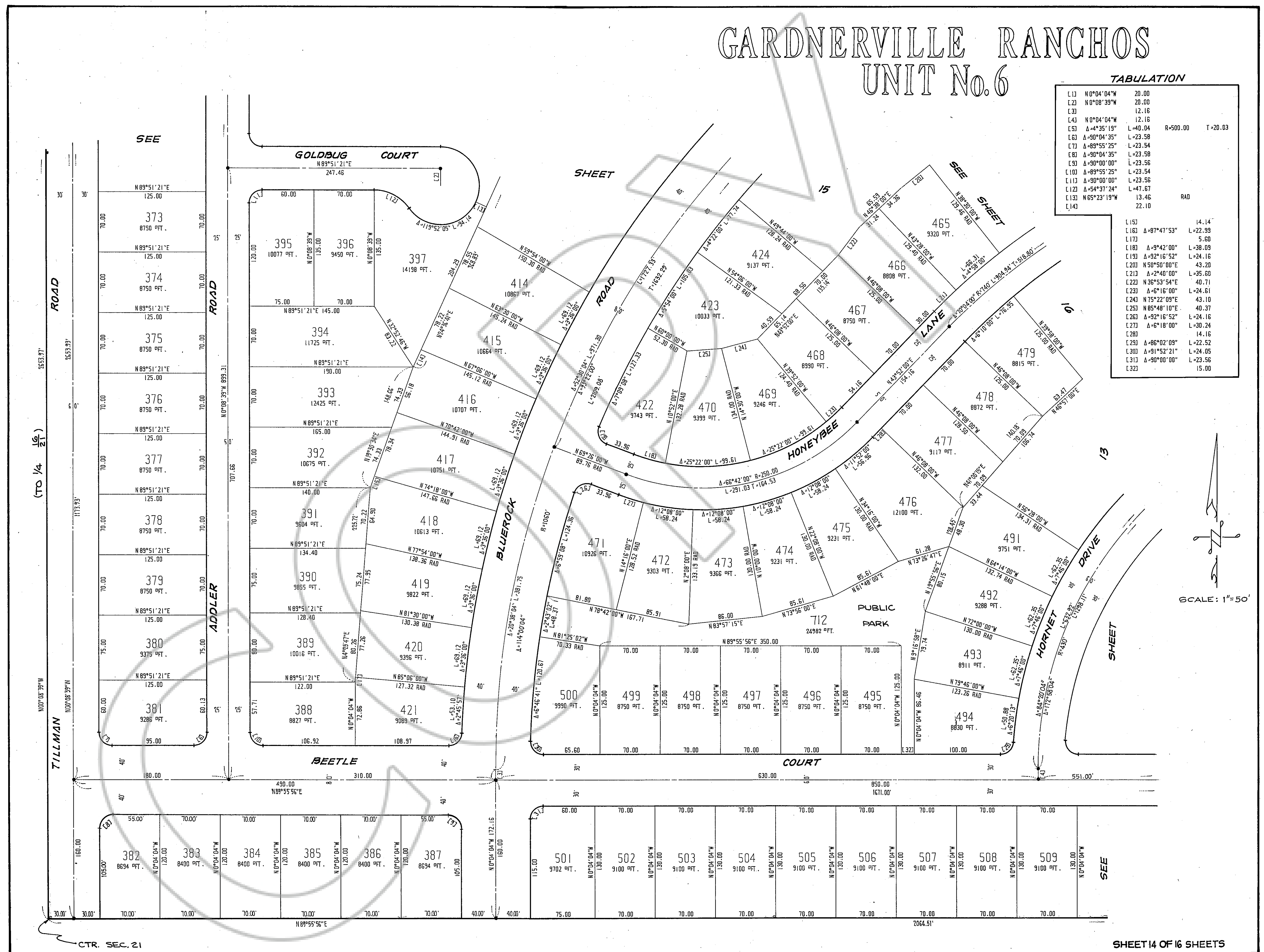




# GARDNERVILLE RANCHOS UNIT No. 6

### TABULATION

L11	N0°04'04"W	20.00	
L23	N0°08'39"W	20.00	
L33		12.16	
L43	N0°04'04"W	12.16	
L53	A=4°35'19"	L=40.04	R=500.00 T=20.03
L63	A=90°04'35"	L=23.58	
L77	A=89°55'25"	L=23.54	
L80	A=90°04'35"	L=23.58	
L93	A=90°00'00"	L=23.56	
L100	A=89°55'25"	L=23.54	
L113	A=90°00'00"	L=23.56	
L123	A=54°37'24"	L=47.67	
L133	N65°23'19"W	13.46	RAD
L143		22.10	
L153		14.14	
L163	A=87°47'53"	L=22.99	
L173		5.60	
L183	A=9°42'00"	L=38.09	
L193	A=92°16'52"	L=24.16	
L203	N50°50'00"E	43.20	
L213	A=2°40'00"	L=35.60	
L223	N36°53'54"E	40.71	
L233	A=6°18'00"	L=24.61	
L243	N75°22'09"E	43.10	
L253	N85°48'10"E	40.37	
L263	A=92°16'52"	L=24.16	
L273	A=6°18'00"	L=30.24	
L283		14.16	
L293	A=86°02'09"	L=22.52	
L303	A=91°52'21"	L=24.05	
L313	A=90°00'00"	L=23.56	
L323		15.00	



DRAWING NUMBER  
Cochran: De Ranchos #6  
Sheet 14 of 16  
PLAN HOLD CORPORATION • IRVINE, CALIFORNIA  
REORDER BY NUMBER 0104

DRAWING NUMBER  
PLAN HOLD CORPORATION • IRVINE, CALIFORNIA  
REORDER BY NUMBER 0104

DRAWING NUMBER  
PLAN HOLD CORPORATION • IRVINE, CALIFORNIA  
REORDER BY NUMBER 0104

DRAWING NUMBER  
PLAN HOLD CORPORATION • IRVINE, CALIFORNIA  
REORDER BY NUMBER 0104

CTR. SEC. 21

SHEET 14 OF 16 SHEETS



# GARDNERVILLE RANCHOS UNIT No. 6

DRAWING NUMBER  
Gardnerville Ranchos 6  
Sheet 15 of 16  
PLAN HOLD CORPORATION • IRVINE, CALIFORNIA  
ENGINEER BY NUMBER 00048

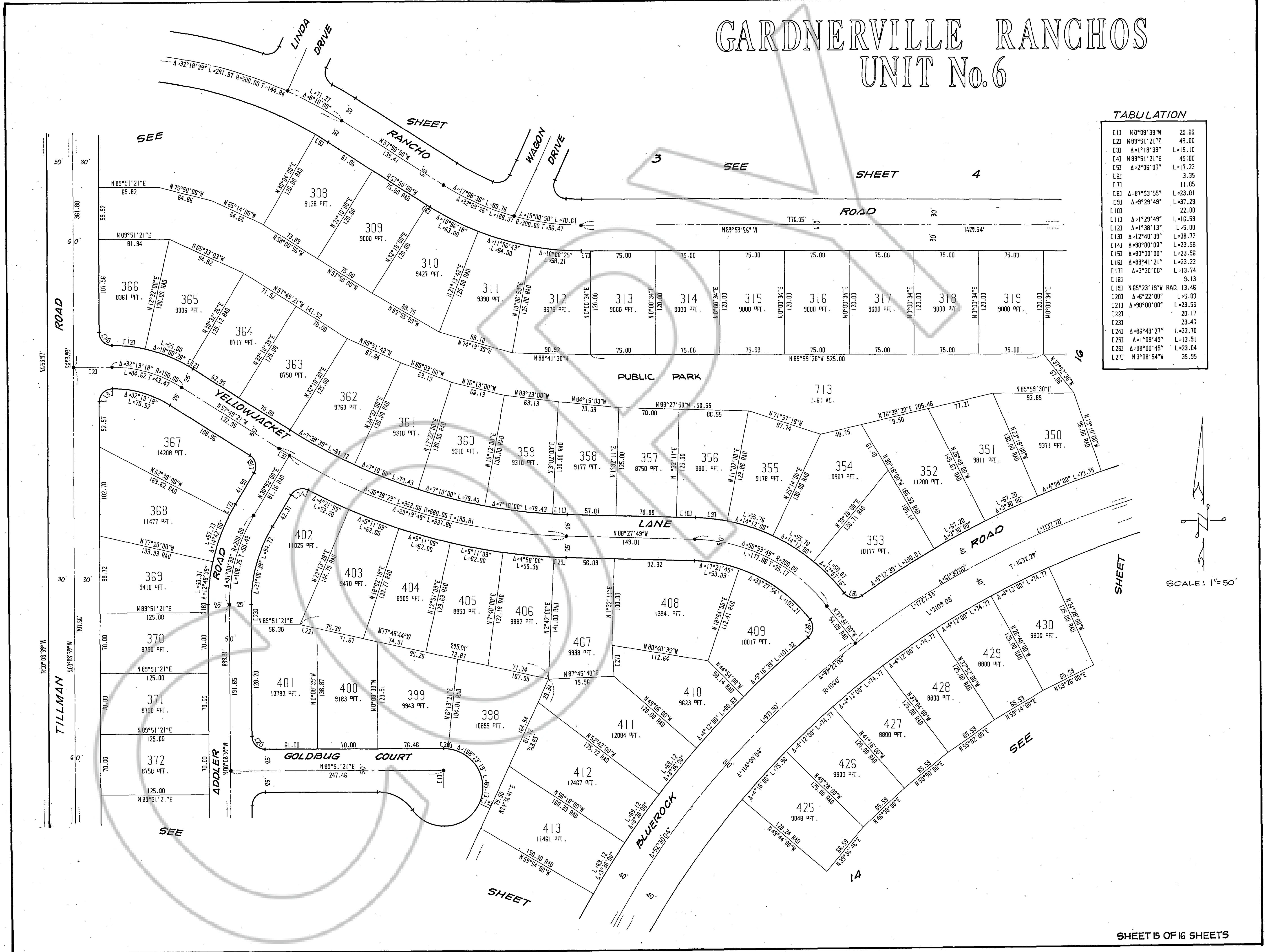
DRAWING NUMBER

DRAWING NUMBER

DRAWING NUMBER

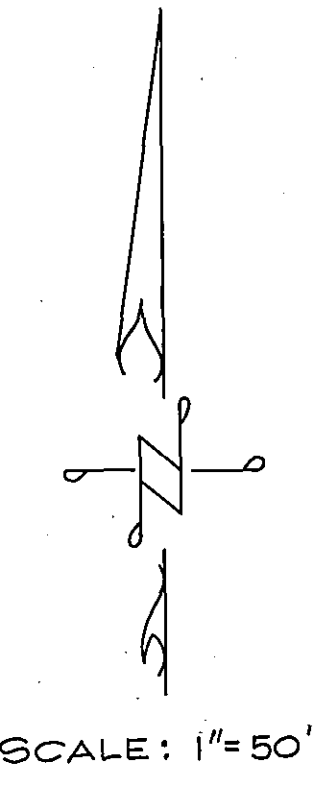
PLAN HOLD CORPORATION • IRVINE, CALIFORNIA  
ENGINEER BY NUMBER 00048

PLAN HOLD CORPORATION • IRVINE, CALIFORNIA  
ENGINEER BY NUMBER 00048



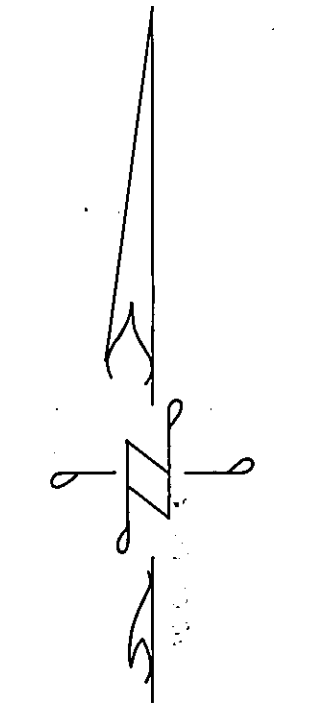
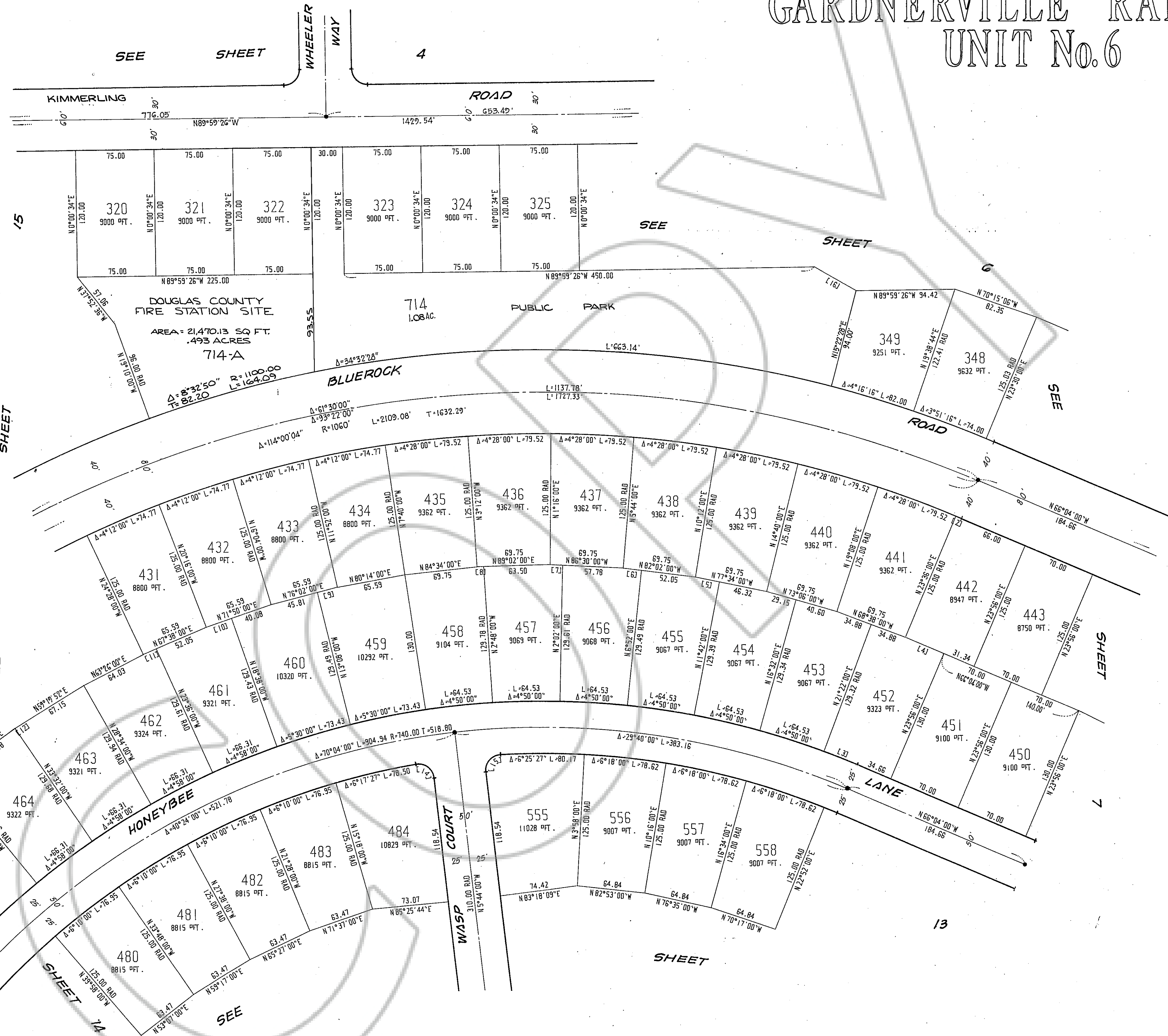
**TABULATION**

C13	N0°08'39"W	20.00
C20	N89°51'21"E	45.00
C30	A=1°18'39"	L=15.10
C43	N89°51'21"E	45.00
E53	A=2°06'00"	L=17.23
C63		3.35
C73		11.05
E83	A=87°53'55"	L=23.01
E93	A=9°29'49"	L=37.29
C103		22.00
L113	A=1°29'49"	L=16.59
L123	A=1°38'13"	L=5.00
L143	A=12°40'39"	L=38.72
L153	A=90°00'00"	L=23.56
L163	A=90°00'00"	L=23.56
L173	A=88°41'21"	L=23.22
L183	A=3°30'00"	L=13.74
L193		9.13
L203	N65°23'19"W RAD.	13.46
L213	A=6°22'00"	L=5.00
L223	A=90°00'00"	L=23.56
L233		20.17
L243	A=86°43'27"	L=22.70
L253	A=1°09'49"	L=13.91
L263	A=88°00'45"	L=23.04
L273	N3°08'54"W	35.95





# GARDNERVILLE RANCHOS UNIT No. 6



### TABULATION

LINE	BEARING	LENGTH (FT)	AREA (SQ. FT)
L13	N 17°48'00\"	42.72	
L23	A=0°20'00\"	L=5.93	
L31	A=2°34'00\"	L=34.27	
L43	N 66°05'18\"	39.87	
L53		23.43	
L63		17.71	
L73		11.98	
L83		6.25	
L93		19.79	
L103		25.51	
L113		13.54	
L123		10.42	
L133	N 50°50'00\"	22.39	
L143	A=93°16'33\"	L=24.42	
L153	A=93°16'33\"	L=24.42	
L163	N 59°15'19\"	45.68	

DRAWING NUMBER  
Gardnerville Ranchos #6  
Sheet 16 of 16  
PLAN HOLD CORPORATION • IRVINE, CALIFORNIA  
REGISTERED PROFESSIONAL ENGINEER

DRAWING NUMBER  
PLAN HOLD CORPORATION • IRVINE, CALIFORNIA  
REGISTERED PROFESSIONAL ENGINEER

DRAWING NUMBER  
PLAN HOLD CORPORATION • IRVINE, CALIFORNIA  
REGISTERED PROFESSIONAL ENGINEER

DRAWING NUMBER  
PLAN HOLD CORPORATION • IRVINE, CALIFORNIA  
REGISTERED PROFESSIONAL ENGINEER