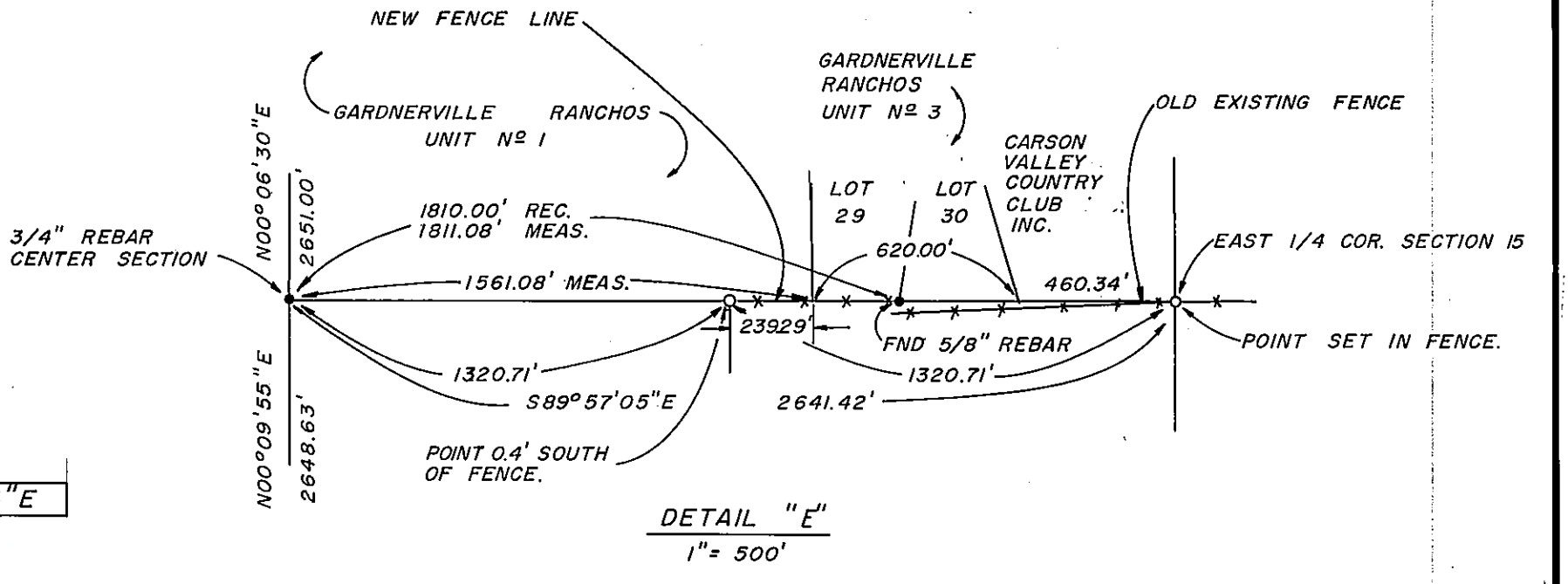
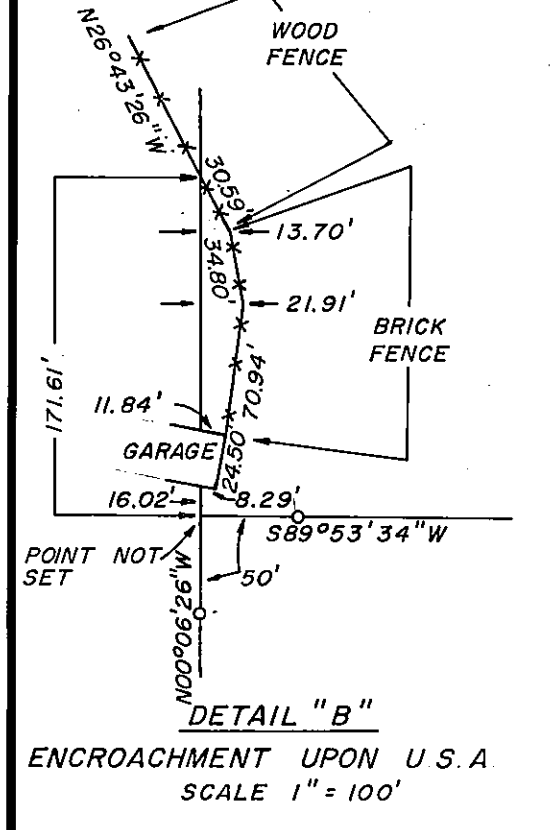


HIGHWAY RIGHT-OF-WAY CURVE DATA					
NO.	RADIUS	DELTA	ARC LG.	TANGENT CH. LG.	CH. LG.
1	4960.00'	05° 30' 11"	476.39	238.38'	476.21'
2	4960.00'	13° 27' 00"	1164.34	584.86'	1161.67'
3	3040.00'	13° 20' 00"	707.44	355.33'	705.85'

HIGHWAY RIGHT-OF-WAY DATA		
NO.	BEARING	DIST.
4	N 36° 39' 39" W	1993.31'
5	N 23° 12' 39" W	1288.59'
6	S 28° 35' 55" W	25.36'
7	S 36° 39' 39" E	144.46'
8	S 36° 38' 37" E	225.08'
9	S 36° 39' 39" E	1993.31'
10	S 36° 47' 17" E	240.32'
11	S 23° 03' 38" E	237.67'
12	S 23° 12' 39" E	1099.92'
13	S 00° 13' 57" E	204.93'

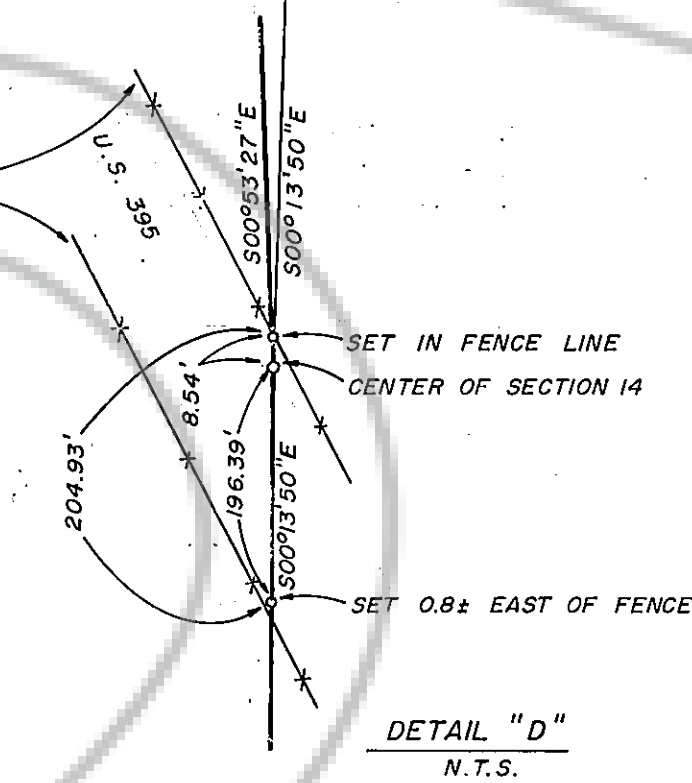


DETAIL "A"
SCALE 1"=400'



DETAIL "B"
ENCROACHMENT UPON U.S.A.
SCALE 1"=100'

DETAIL "C"
N.T.S.



DETAIL "D"
N.T.S.

DETAIL "F"
N.T.S.

DETAIL "G"
N.T.S.

DETAIL "H"
N.T.S.

- LEGEND:**
- ◆ ACCEPTED POINT FOR SECTION CORNER
 - * POSITIONS BY PROPORINATE MEASUREMENT
 - ◆ ACCEPTED POINT FOR SECTION 1/4 CORNER
 - SET 2" I.P. CAPPED & MARKED R.L.S. 1688

APPROX & EAST FORK CARSON RIVER COURSES		
NO.	BEARING	DIST.
1	N 21° 50' 17" W	482.00'
2	S 27° 27' 05" E	791.11'
3	S 13° 51' 02" E	1183.79'
4	S 75° 50' 11" E	793.97'
5	S 41° 37' 09" E	516.33'
6	S 16° 22' 20" E	1104.37'
7	S 52° 26' 17" E	875.66'
8	S 85° 49' 45" E	1188.31'
9	S 56° 47' 21" E	275.92'
10	S 60° 42' 21" E	164.19'
11	S 48° 39' 06" E	853.01'
12	S 18° 14' 42" E	421.27'
13	S 33° 04' 19" E	501.67'
14	S 42° 55' 47" E	553.51'
15	S 47° 17' 15" E	387.40'
16	S 24° 02' 39" E	330.82'
17	S 08° 46' 43" W	321.85'
18	S 30° 26' 54" W	382.33'
19	S 33° 11' 10" W	554.95'

WASHOE TRIBE OF NEVADA AND CALIFORNIA CERTIFICATION:
THIS IS TO CERTIFY THAT, AS TRUSTOR'S OF THE PROPERTY KNOWN AS THE WASHOE RANCH AND THE DRESSLERVILLE COLONY, WE HAVE EMPLOYED THE MURRAY-McCORMICK ENVIRONMENTAL GROUP OF NEVADA, UNDER THEIR LAND SURVEYING DIVISION, TO SUBDIVIDE PORTIONS OF SECTIONS 11, 14, 15, 23, 24, 25, AND 26 T.12N., R.20E., M.D.M. THIS PLAT, SHOWING SAID DESCRIBED SUBDIVISION HAS BEEN CAREFULLY REVIEWED AND IS ACCEPTED BY US.

Robert Frank
ROBERT FRANK, TRIBAL CHAIRMAN FOR WASHOE TRIBE OF NEVADA AND CALIFORNIA

LAND SURVEYOR'S CERTIFICATION
I, DAVID R. MILLARD, DO HEREBY CERTIFY THAT THIS MAP, CONSISTING OF ONE SHEET, IS A TRUE AND ACCURATE RECORD OF THE LANDS SURVEYED AT THE REQUEST OF THE WASHOE TRIBE OF NEVADA AND CALIFORNIA. RECORDS WERE OBTAINED FROM THE DOUGLAS COUNTY RECORDERS OFFICE, NEVADA STATE HIGHWAY DEPARTMENT, DOUGLAS COUNTY ENGINEERING OFFICE, THE BUREAU OF INDIAN AFFAIRS AND THE NEVADA LAND OFFICE AND SUCH INFORMATION SO OBTAINED HAS BEEN INCORPORATED INTO THIS RECORD OF SURVEY. THE LAND OWNED BY THE UNITED STATES OF AMERICA, IN TRUST FOR THE WASHOE TRIBE OF NEVADA AND CALIFORNIA, IS WITHIN PORTIONS OF THE FOLLOWING SECTIONS: NW 1/4 SECTION 25; N 1/2 NE 1/4 SECTION 26; SECTION 23; E 1/2 SE 1/4 SECTION 15; W 1/2 SECTION 14; SW 1/4 SECTION 11; AND THE SW 1/4 SW 1/4 SECTION 24 ALL IN T.12N.; R.20E. M.D.M. COUNTY OF DOUGLAS, STATE OF NEVADA. THIS SURVEY WAS COMPLETED ON JUNE 1, 1973.



David R. Millard
DAVID R. MILLARD
P.E. AND R.L.S. 1688

BASIS OF BEARING
NEVADA STATE HIGHWAY DEPARTMENT CENTERLINE OF U.S. HIGHWAY 395 GRID BEARING N37°59'25"W STATION "X" 123+86.19 ROTATED 0° 41' 34" COUNTERCLOCKWISE TO GEODETIC AZIMUTH. ALL DISTANCES SHOWN HEREON ARE GROUND DISTANCES.

RECORDED AT REQUEST OF: Murray McCormick
ON 6-7-73 AT 10 MIN. PAST 11 A.M.
OFFICIAL RECORDS OF DOUGLAS COUNTY, NEVADA FEE 2.50 per page
NO. 673 PAGE 270
PATRICIA J. STANLEY, RECORDER BY Patricia J. Stanley

RECORD OF SURVEY
FOR
WASHOE TRIBE OF NEVADA AND CALIFORNIA
PORTION OF SECTIONS 11, 14, 15, 23, 24, 25 AND 26
T.12N., R.20E., M.D.M.
DOUGLAS COUNTY, NEVADA
THE MURRAY-McCORMICK ENVIRONMENTAL GROUP
OF NEVADA 70 LINDEN ST./RENO, NEVADA
ECOSYSTEMS ANALYSIS-PLANNING-LAND SURVEYS AND ENGINEERING