

ENGINEERS PLANNERS ECONOMISTS

**CORNELL, HOWLAND, HAYES & MERRYFIELD
CLAIR A. HILL & ASSOCIATES**

1525 Court Street P.O. Box 2088, Redding, California 96001, Telephone: 916/243-5831

Redding Regional Office

DESCRIPTION FOR
TAHOE-DOUGLAS DISTRICT
Utility Easement to be acquired from:
MOREAU, WEST and BETH

2 October 1973
R-3685.02
1318-07D-004

The Southwest 7.50 feet, of Lot 4, Zephyr Cove No. One in Section 10,
T. 13 N., R. 18 E., M.D.M., Douglas County, Nevada.

Exhibit "A"

77779

Checked:

	By	Date
Typing	Dk	10-3-73
Traverse		
Map	SAH	TMS

BOOK 175 PAGE 1081

It is suggested that this description be referred to a title company before incorporating it in any document.



ENGINEERS PLANNERS ECONOMISTS

CORNELL, HOWLAND, HAYES & MERRYFIELD
CLAIR A. HILL & ASSOCIATES

1525 Court Street P.O. Box 2088, Redding, California 96001, Telephone: 916/243-5831

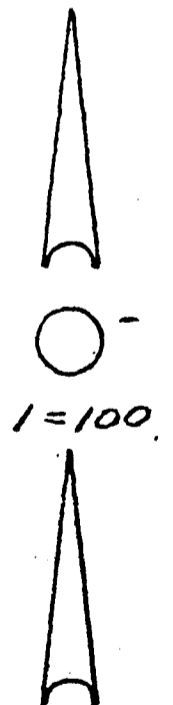
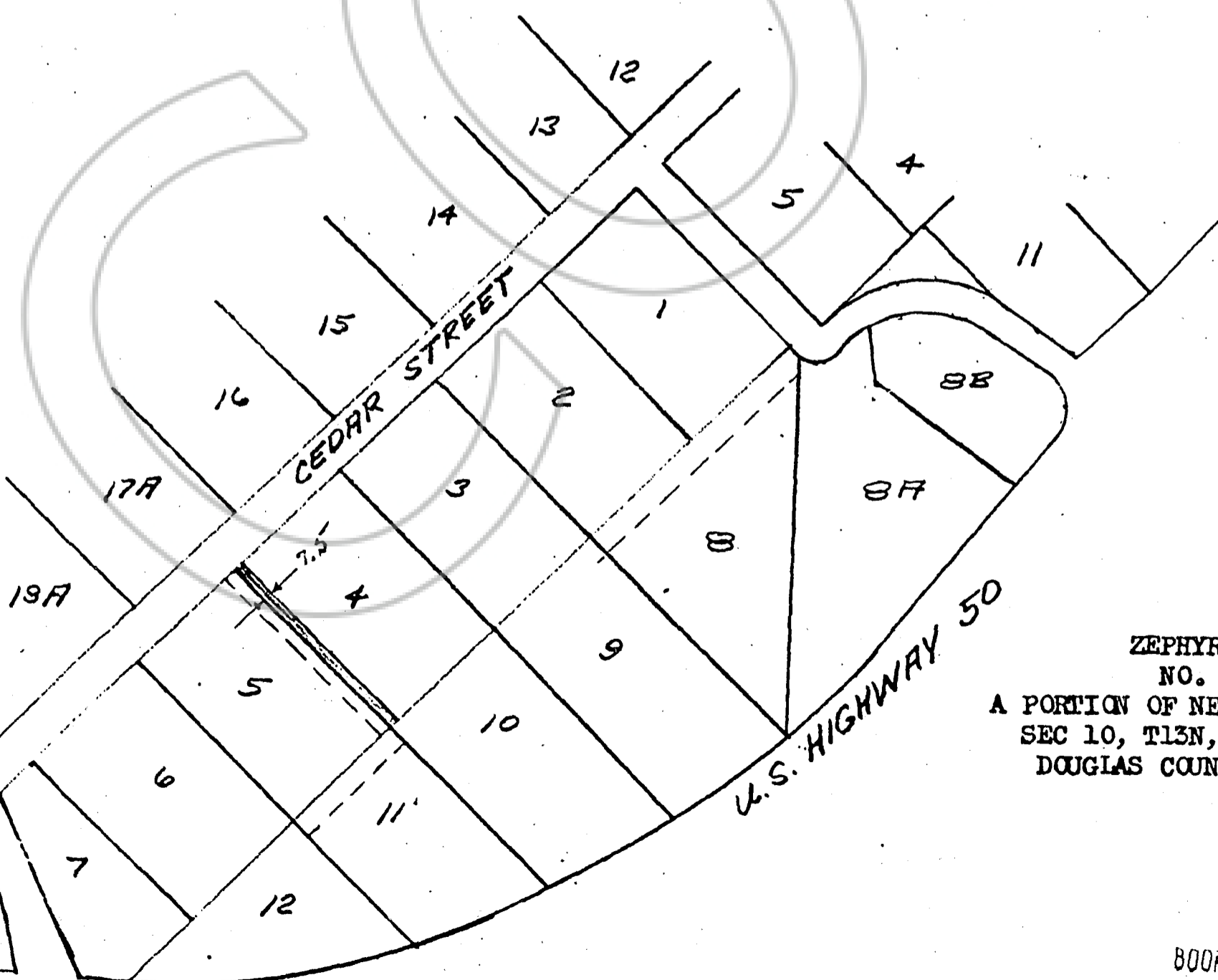
Redding Regional Office

DESCRIPTION FOR
TAHOE-DOUGLAS DISTRICT
Utility Easement to be acquired from:
MOREAU, WEST and BETH

2 October 1973

R-3685.02

1318-07D-004



ZEPHYR COVE
NO. ONE
A PORTION OF NE 1/4 OF SW 1/4
SEC 10, T13N, R18E, MDM
DOUGLAS COUNTY, NEVADA

77779