

ENGINEERS PLANNERS ECONOMISTS

**CORNELL, HOWLAND, HAYES & MERRYFIELD
CLAIR A. HILL & ASSOCIATES**

1525 Court Street P.O. Box 2088, Redding, California 96001, Telephone: 916/243-5831

Redding Regional Office

DESCRIPTION FOR
TAHOE DOUGLAS DISTRICT
Utility easement to be acquired from:
ALPHA HARDWARE & SUPPLY COMPANY

2 October 1973

R-3685.02

1318-07F-014A

The Easterly 15.00 feet of Parcel lying East of East boundary of Lot 14,
Zephyr Cove No. One in Section 10, T. 13 N., R. 18 E., M.D.M., Douglas County,
Nevada.

Exhibit "A"

77787

Checked:

	By	Date
Typing	SJ	TJB 10-3-73
Traverse		
Map	SPM TJB	✓

BOOK 175 PAGE 1105



ENGINEERS PLANNERS ECONOMISTS

CORNELL, HOWLAND, HAYES & MERRYFIELD
CLAIR A. HILL & ASSOCIATES

1525 Court Street P.O. Box 2088, Redding, California 96001, Telephone: 916/243-5831

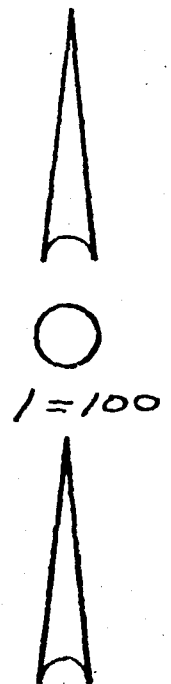
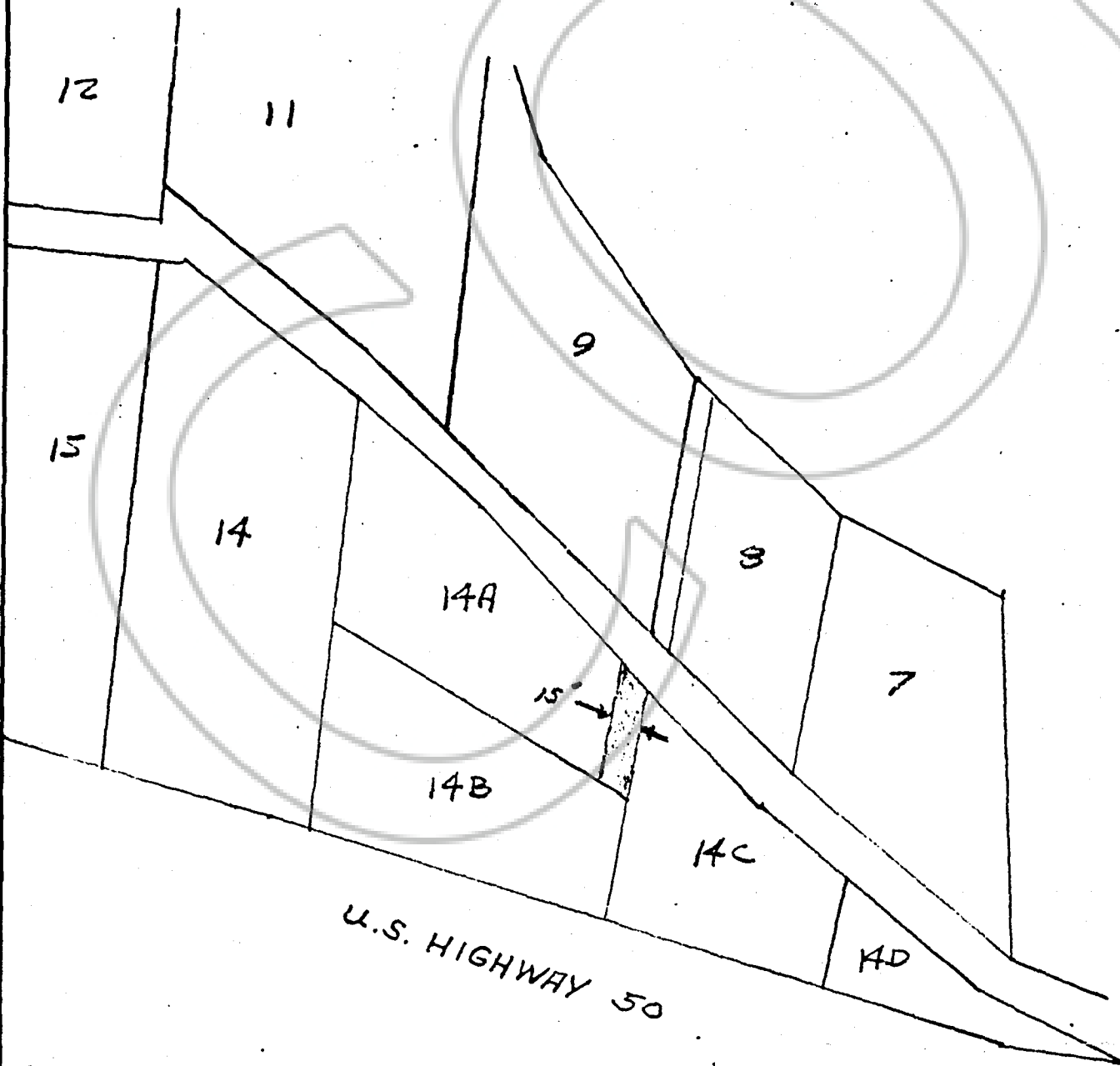
Redding Regional Office

DESCRIPTION FOR
TAHOE DOUGLAS DISTRICT
Utility easement to be acquired from:
ALPHA HARDWARE & SUPPLY COMPANY

2 October 1973

R-3685.02

1318-07F-014A



ZEPHYR COVE
NO. ONE
A PORTION OF NW 1/4 OF SW 1/4
SEC 10, T13N, R18E, MDM
DOUGLAS COUNTY, NEVADA

77787