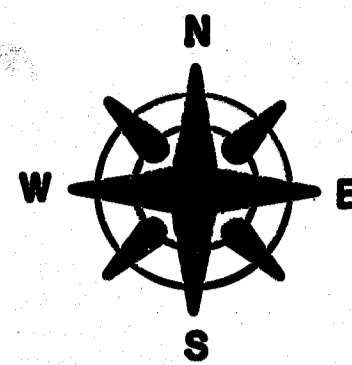
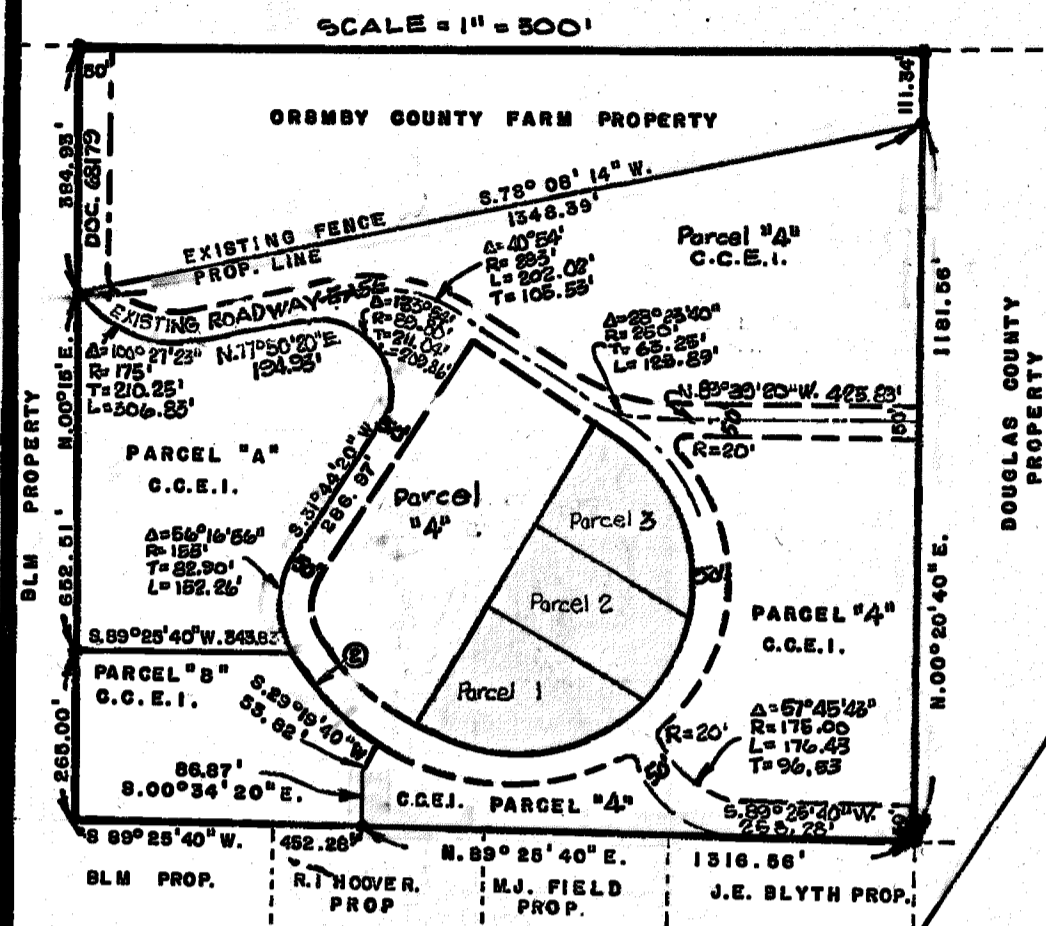


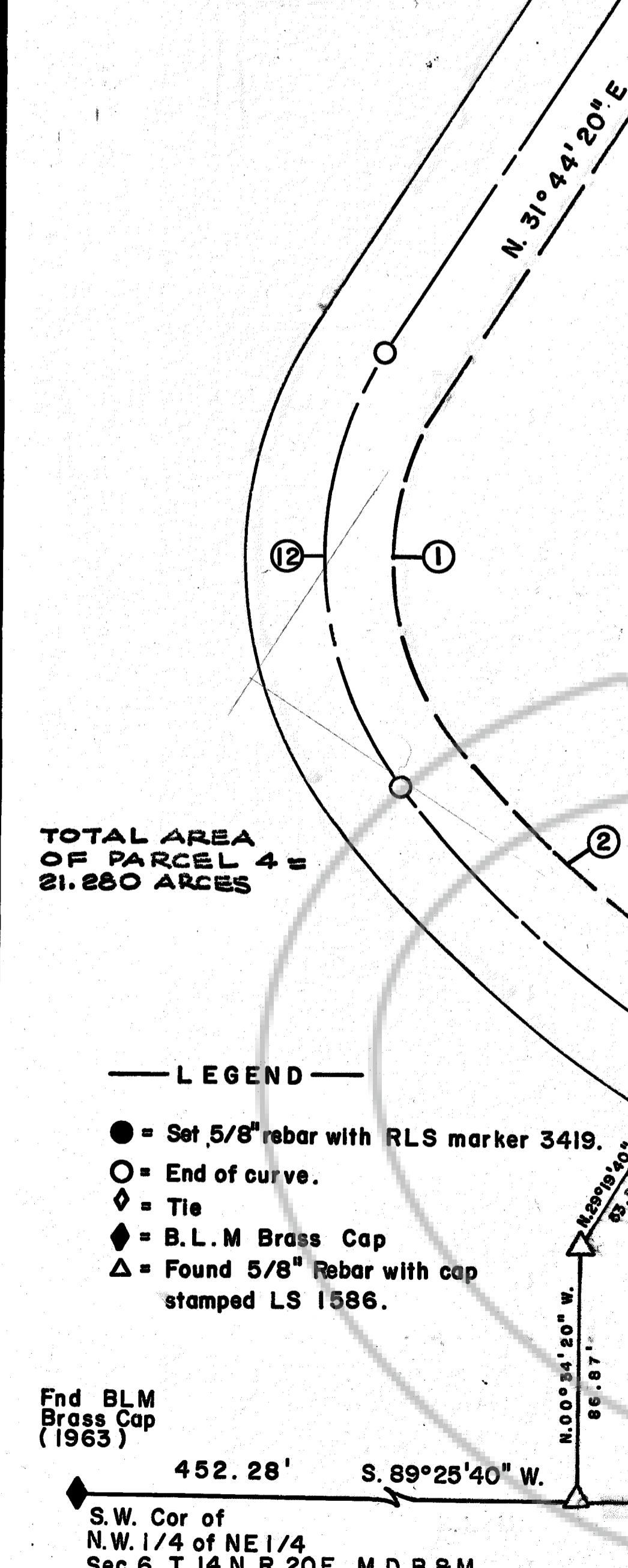
SCALE: 1" = 40'



NE 1/4, Sec. 6, T. 14 N., R. 20 E., M. D. B. & M.



SCALE: 1" = 500'



TOTAL AREA OF PARCEL 4 = 21.280 ACRES

LEGEND

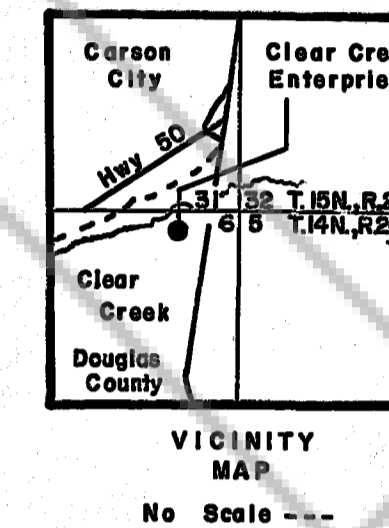
- = Set 5/8" rebar with RLS marker 3419.
- = End of curve.
- ◇ = Tie
- ◆ = B. L. M. Brass Cap
- △ = Found 5/8" Rebar with cap stamped LS 1586.

End BLM Brass Cap (1963)
 S.W. Cor of N.W. 1/4 of NE 1/4 Sec. 6, T. 14 N., R. 20 E., M. D. B. & M.

NOTE:

Easements for Utility purposes of 7.5 feet in width adjacent to each front lot line and 5.0 feet in width adjacent to each side and rear lot line are to be dedicated.

CURVE NO.	DELTA	RADIUS	LENGTH	TANGENT	LENGTH CHORD
1	70°45'00"	108.00'	129.66'	74.55'	121.57'
2	20°20'15"	370.00'	131.35'	66.37'	130.65'
3	08°18'28"	370.00'	53.65'	26.67'	53.60'
4	46°06'18"	370.00'	297.75'	187.45'	289.76'
5	18°20'44"	255.00'	91.65'	41.18'	81.30'
6	33°18'10"	255.00'	148.22'	76.27'	146.14'
7	78°51'08"	255.00'	337.58'	198.70'	313.47'
8	127°30'00"	255.00'	567.45'	517.09'	457.41'
9	127°30'00"	280.00'	623.08'	567.78'	502.25'
10	74°45'00"	370.00'	482.71'	282.63'	449.20'
11	74°45'00"	395.00'	515.35'	301.73'	479.55'
12	70°45'00"	130.00'	160.53'	92.30'	150.52'



OWNER'S CERTIFICATE

This is to certify that the undersigned, Clear Creek Enterprises, Inc., is the owner of the parcels shown on this map, and that all easements for Utility Installation and Access as shown hereon are permanent easements are granted for the stated purposes.

Phil Roventini
 General Manager --- Clear Creek Enterprises, Inc.

On this 4th day of April, 1977, Phil Roventini, known to me to be General Manager of Clear Creek Enterprises, Inc. did personally appear before me and say that he executed the foregoing certificate freely and voluntarily for the uses and purposes stated herein.

Phil Roventini Robert A. Gardner
 Clear Creek Enterprises, Inc. GENERAL MANAGER Notary Public
My Commission Expires May 2, 1977

COUNTY CLERK'S CERTIFICATE

I, Yvonne Bernard, County Clerk in and for the County of Douglas, State of Nevada, do hereby certify that this Parcel Map was approved and accepted this 7th day of July, 1977, by the Board of Commissioners of Douglas County.

Yvonne Bernard
 County Clerk

RECORDER'S CERTIFICATE

Filed this 21st day of JULY, 1977, at 1:43 p. m., in Book 777 of Parcel Maps at page 1034, at the request of Clear Creek Ent. Inc., Document No. 11246.

Patricia J. Williams
 County Recorder

COUNTY ENGINEER'S CERTIFICATE

I, Robert A. Gardner, Engineer in and for the County of Douglas, State of Nevada, hereby certify that I, have examined this map and that all conditions, local ordinances, and other reviewing agencies have been complied with.

Robert A. Gardner 7/5/77
 Douglas County Engineer

SURVEYOR'S CERTIFICATE

I, Frank W. Gentry, Jr. do hereby certify that this is a true and accurate plat of the lands represented hereon as taken from the field notes of a survey made under my supervision at the instance of Clear Creek Enterprises, Inc., this survey was completed on the 4th day, of April, 1977. The monuments are of the character and occupy the position indicated hereon and are sufficient to enable this survey to be retraced.

Frank W. Gentry, Jr.
 Nevada R.L.S. No. 3419
 No. 3419

UTILITY COMPANIES

The easements shown on this plat have been checked and approved by:
Sierra Pacific Power Company 4/6/77
Continental Telephone 4/6/77
Clear Creek Water Co.
Southwest Gas 04.06.77

PARCEL MAP # 2
 FOR
 CLEAR CREEK ENTERPRISES, INC.
 A RESUBDIVISION OF PARCEL "C" OF
 PARCEL MAP FOR CLEAR CREEK ENTERPRISES DOCUMENT NUMBER 86444.

F.W. Gentry & Associates
 5861 South Carson Street
 Carson City, Nevada - 89701

Drawn By: L. Carpenter
 Checked By: HUL
 Date: 4 April 77