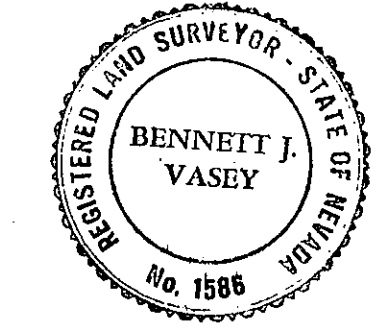


SURVEYOR'S CERTIFICATE:

I, B. J. VASEY, DO HEREBY CERTIFY THAT THIS IS A TRUE AND ACCURATE PLAT OF THE LANDS SHOWN HEREON, TAKEN FROM RECORDED MAPS OF SURVEYS STATED AND THAT IT IS TECHNICALLY CORRECT.



B. J. Vasey
B.J. VASEY R.L.S. 1588

COUNTY ENGINEER'S CERTIFICATE:

THE UNDERSIGNED HEREBY CERTIFIES THAT HE IS THE DULY APPOINTED COUNTY ENGINEER AND THAT HE HAS EXAMINED THE ANNEXATION MAP SHOWN HEREON AND FOUND IT SUBSTANTIALLY CORRECT AND THAT ALL PROVISIONS OF THE LAWS OF THE STATE OF NEVADA AND THE COUNTY OF DOUGLAS HAVE BEEN MET.

Robert A. Gardner 4/28/78
ROBERT A. GARDNER R.C.E. 2665

COUNTY COMMISSIONER'S CERTIFICATE:

THE PLAT SHOWN HEREON HAS BEEN REVIEWED AND ACCEPTED TO PETITION FOR ANNEXATION TO THE TOWN OF MINDEN ON THIS 4th DAY OF May 1978.

Garry D. Stone
GARRY STONE CHAIRMAN

TOWN OF MINDEN

THE PARCELS OF LAND SHOWN HEREON HAVE BEEN REVIEWED AND ACCEPTED BY THE TOWN OF MINDEN

James W. Olson 2/1/78

**MINDEN - GARDNERVILLE
SANITATION DISTRICT**

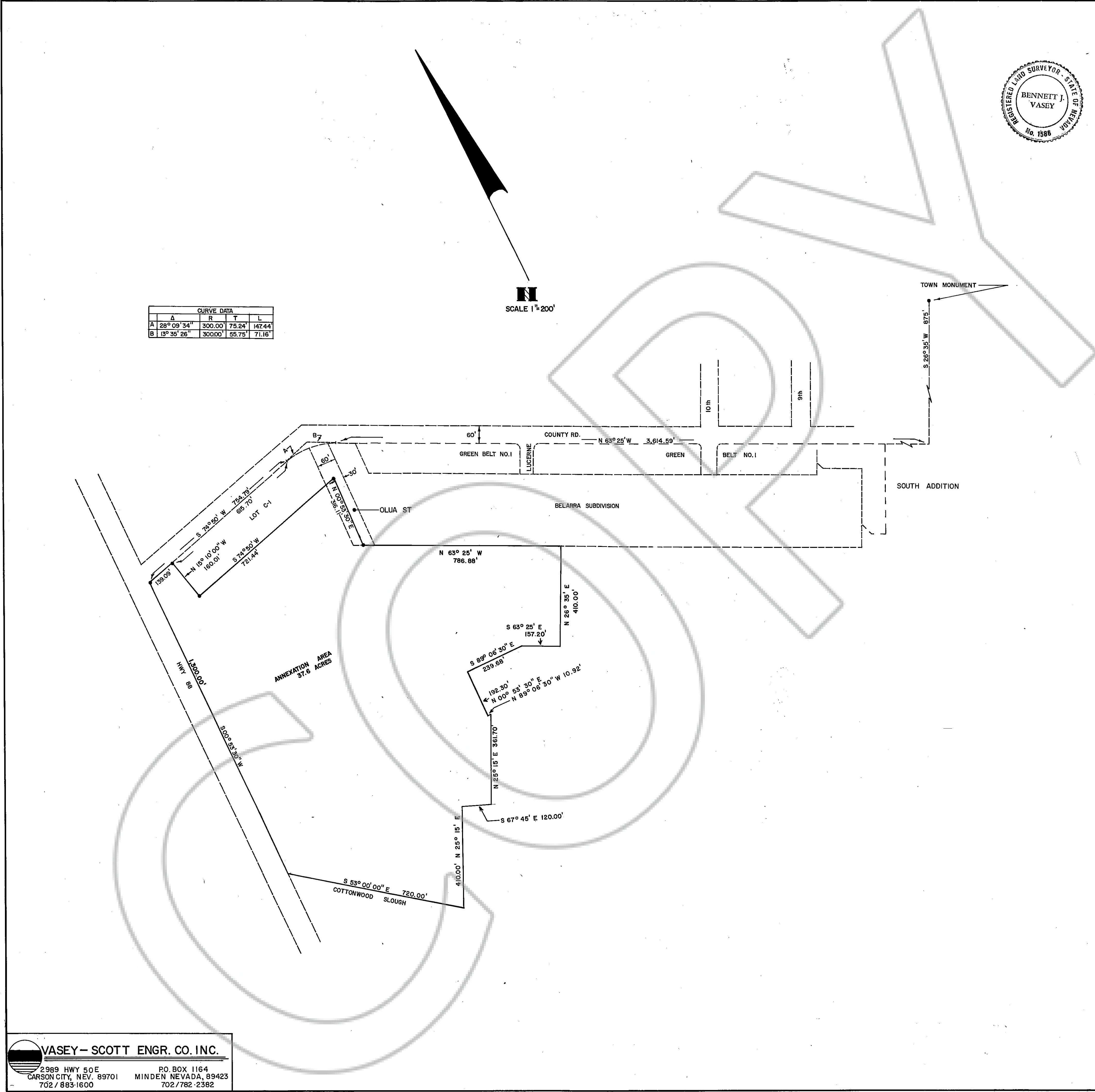
THE PARCELS OF LAND SHOWN HEREON HAVE BEEN REVIEWED AND ACCEPTED BY THE MINDEN - GARDNERVILLE SANITATION DISTRICT.

Ken P. Bell 4/14/78

RECORDER'S CERTIFICATE:

FILED FOR RECORD AT THE REQUEST OF Duane E. Mack
ON THIS 12th DAY OF May 1978, AT 20
MIN. PAST 9 O'CLOCK A.M. IN THE OFFICIAL RECORDS OF
DOUGLAS COUNTY, NEVADA. FILE NO. 20801
BOOK 578 PAGE 845

Wanda Chitt
DOUGLAS COUNTY RECORDER



CURVE DATA				
A	R	T	L	
A	28° 09' 34"	300.00	75.24	147.44
B	13° 35' 26"	300.00	55.75	71.16

N
SCALE 1"=200'

VASEY-SCOTT ENGR. CO. INC.
2989 HWY 50 E P.O. BOX 1164
CARSON CITY, NEV. 89701 MINDEN NEVADA, 89423
702/883-1600 702/782-2382

ANNEXATION MAP
DUANE E. MACK
TO THE
TOWN OF MINDEN
AND THE
MINDEN - GARDNERVILLE
SANITATION DISTRICT