

DRAWING NUMBER
Kingsbury Pines And
Sheet 1 of 2
PLAN HOLD CORPORATION • IRVINE, CALIFORNIA
REGISTERED PROFESSIONAL ENGINEER
REGISTERED LAND SURVEYOR

DRAWING NUMBER
PLAN HOLD CORPORATION • IRVINE, CALIFORNIA
REGISTERED PROFESSIONAL ENGINEER
REGISTERED LAND SURVEYOR

DRAWING NUMBER
PLAN HOLD CORPORATION • IRVINE, CALIFORNIA
REGISTERED PROFESSIONAL ENGINEER
REGISTERED LAND SURVEYOR

DRAWING NUMBER
PLAN HOLD CORPORATION • IRVINE, CALIFORNIA
REGISTERED PROFESSIONAL ENGINEER
REGISTERED LAND SURVEYOR

AMENDED MAP OF KINGSBURY PINES

A PORTION OF THE S.W. 1/4 OF SECTION 24, T.13N., R.18E.
DOUGLAS COUNTY, NEVADA

OWNER'S CERTIFICATE:

KNOW ALL MEN BY THESE PRESENTS THAT RALPH B. CRANDALL, KATHERINE B. CRANDALL AND GERALD J. CHAZAN DO HEREBY REPRESENT THAT THEY ARE THE OWNERS OF THE LAND DESCRIBED BY THIS MAP CONSISTING OF TWO SHEETS AND THAT THEY APPROVE AND ACCEPT THIS MAP OF SAID LANDS AS SHOWN IN ACCORDANCE WITH AND FOR THE PURPOSES SET FORTH IN THE NEVADA REVISED STATUTES 116 AND 278 AND ALL SUBSEQUENT AMENDMENTS THERETO AND DOUGLAS COUNTY ORDINANCES NO. 16 AND DO HEREBY DEDICATE TO ANY AND ALL PUBLIC PURPOSES THOSE PORTIONS OF SAID LANDS DESIGNATED ON THIS MAP AS STREETS AND OTHER PUBLIC WAYS AND PUBLIC PLACES SHOWN HEREON AND ALSO OFFER FOR DEDICATION AND DO HEREBY DEDICATE FOR PARTICULAR PURPOSES THE FOLLOWING:

LOT A - COMMON AREA AND EASEMENT FOR INGRESS AND EGRESS AND FOR THE INSTALLATION, USE, MAINTENANCE, REPAIR AND REPLACEMENT OF PUBLIC UTILITIES INCLUDING SEWER, GAS, ELECTRIC, TELEPHONE, WATER LINES AND TV CABLE AS DESIGNATED AND DESCRIBED ARE HEREBY CREATED OVER, UNDER AND ACROSS THE DESCRIBED REAL ESTATE.

Ralph B. Crandall Jr. Katherine B. Crandall Gerald J. Chazan
RALPH B. CRANDALL JR. KATHERINE B. CRANDALL GERALD J. CHAZAN

STATE OF NEVADA
COUNTY OF DOUGLAS
ON January 23, 1979, PERSONALLY APPEARED BEFORE ME, A NOTARY PUBLIC, RALPH B. CRANDALL WHO ACKNOWLEDGES THAT HE DID EXECUTE THE ABOVE INSTRUMENT.

MY COMMISSION EXPIRES MAY 12, 1981

John H. Speck
NOTARY PUBLIC
JOHN H. SPECK
Notary Public - State of Nevada
Douglas County
My Commission Expires May 12, 1981

STATE OF NEVADA
COUNTY OF DOUGLAS
ON January 23, 1979, PERSONALLY APPEARED BEFORE ME, A NOTARY PUBLIC, KATHERINE B. CRANDALL WHO ACKNOWLEDGES THAT SHE DID EXECUTE THE ABOVE INSTRUMENT.

MY COMMISSION EXPIRES MAY 12, 1981

John H. Speck
NOTARY PUBLIC
JOHN H. SPECK
Notary Public - State of Nevada
Douglas County
My Commission Expires May 12, 1981

STATE OF NEVADA
COUNTY OF DOUGLAS
ON January 23, 1979, PERSONALLY APPEARED BEFORE ME, A NOTARY PUBLIC, GERALD J. CHAZAN WHO ACKNOWLEDGES THAT HE DID EXECUTE THE ABOVE INSTRUMENT.

MY COMMISSION EXPIRES MAY 12, 1981

John H. Speck
NOTARY PUBLIC
JOHN H. SPECK
Notary Public - State of Nevada
Douglas County
My Commission Expires May 12, 1981

SEWER, WATER AND ACCESS EASEMENT:

THE UNDERSIGNED HEREBY DEDICATES THE EASEMENT SHOWN ON THIS MAP FOR INGRESS AND EGRESS TO 'KINGSBURY PINES' ACROSS THE DESCRIBED REAL PROPERTY.

Carole Terry
CAROLE TERRY

STATE OF NEVADA
COUNTY OF DOUGLAS
ON April 3, 1979, PERSONALLY APPEARED BEFORE ME, A NOTARY PUBLIC, CAROLE TERRY WHO ACKNOWLEDGES THAT SHE DID EXECUTE THE ABOVE INSTRUMENT.

MY COMMISSION EXPIRES April 6, 1980

Joel F. Anderson
NOTARY PUBLIC
JOEL F. ANDERSON
Notary Public - State of Nevada
Douglas County
My Commission Expires April 6, 1980

UTILITIES APPROVAL:

THE UTILITY EASEMENTS ON THIS MAP HAVE BEEN CHECKED AND APPROVED AS ADEQUATE FOR THE INSTALLATION OF ELECTRIC, TELEPHONE, WATER AND GAS SERVICES

Paul W. Cooper 1-26-79
SIERRA PACIFIC POWER CO.
William Deffen 1-26-79
KINGSBURY GENERAL IMPROVEMENT DIST.
John H. Speck 1-30-79
KINGSBURY FIRE PROTECTION DIST.
John L. Vaughan 2-1-79
CONTINENTAL TELEPHONE CO.
Frank Stueck 03-12-79
SOUTHWEST GAS CORP.

THIS FINAL MAP IS APPROVED BY THE HEALTH DIVISION OF THE DEPARTMENT OF HUMAN RESOURCES CONCERNING SEWAGE DISPOSAL, WATER POLLUTION, WATER QUALITY AND WATER SUPPLY FACILITIES IN ACCORDANCE WITH NEVADA REVISED STATUTES. THIS APPROVAL PREDICATES COMMUNITY WATER SUPPLY AND COMMUNITY SEWAGE DISPOSAL.

Albert F. Forte 1/30/79
HEALTH DIVISION

THIS FINAL MAP IS APPROVED BY THE DIVISION OF WATER RESOURCES OF THE DEPARTMENT OF CONSERVATION AND NATURAL RESOURCES CONCERNING WATER QUANTITY SUBJECT TO THE REVIEW OF APPROVAL ON FILE IN THIS OFFICE.

Robert W. Pennington
DIVISION OF WATER RESOURCES

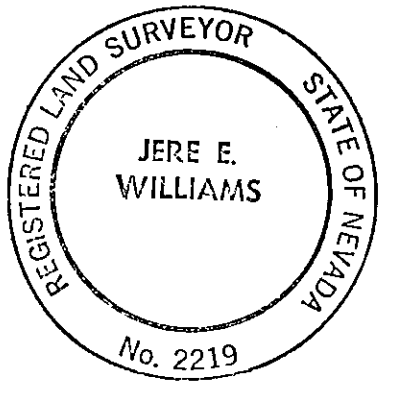
KINGSBURY GENERAL IMPROVEMENT DISTRICT RELINQUISHES ALL RIGHTS AND TITLE TO THE SEWER AND WATER EASEMENTS AS SHOWN ON THE MAP ENTITLED 'KINGSBURY PINES' RECORDED ON JUNE 6, 1978 AS DOCUMENT NO. 21552 AND THE UTILITY EASEMENT RECORDED ON MAY 4, 1977 IN DOUGLAS COUNTY, NEVADA AND ACCEPTS IN LIEU OF SAID EASEMENTS THE EASEMENT AS SHOWN ON THIS 'AMENDED MAP OF KINGSBURY PINES'.

William Deffen 4-3-79
KINGSBURY GENERAL IMPROVEMENT DISTRICT

SURVEYOR'S CERTIFICATE:

- I, JERE E. WILLIAMS, A REGISTERED LAND SURVEYOR IN THE STATE OF NEVADA, CERTIFY THAT:
1. THIS A TRUE AND ACCURATE REPRESENTATION OF THE LANDS SURVEYED UNDER MY SUPERVISION AT THE INSTANCE OF RALPH B. CRANDALL JR.
 2. THE LANDS SURVEYED LIE WITHIN SECTION 24, T.13 N., R.18 E., M.D.S. #M. AND WAS COMPLETED IN JULY, 1977.
 3. THIS PLAT COMPLIES WITH THE APPLICABLE STATE STATUTES AND ANY LOCAL ORDINANCES.
 4. THE MONUMENTS ARE OF THE CHARACTER SHOWN AND OCCUPY THE POSITIONS INDICATED.

Jere E. Williams 1-30-79
JERE E. WILLIAMS R.L.S. 2219



TITLE CERTIFICATE:

THIS IS TO CERTIFY THAT RALPH B. CRANDALL, KATHERINE B. CRANDALL AND GERALD J. CHAZAN ARE THE ONLY PARTIES HAVING RECORD TITLE INTEREST IN THE TRACT OF LAND REPRESENTED ON THIS MAP

John H. Speck
Douglas County TITLE Co.

PLANNING COMMISSION CERTIFICATE:

REVIEWED, APPROVED AND RECOMMENDED TO THE COUNTY COMMISSIONERS OF DOUGLAS COUNTY BY THE DOUGLAS COUNTY PLANNING COMMISSION ON THIS 31st DAY OF MAY, 1977.

Dallas W. Pennington
CHAIRMAN, PLANNING COMMISSION OF THE COUNTY OF DOUGLAS, STATE OF NEVADA

COUNTY ENGINEER'S CERTIFICATE:

I, ROBERT A. GARDNER, ENGINEER IN AND FOR THE COUNTY OF DOUGLAS, STATE OF NEVADA, HEREBY CERTIFY I HAVE EXAMINED THIS MAP ENTITLED 'AMENDED MAP OF KINGSBURY PINES' AND THAT SAID MAP IS SUBSTANTIALLY AS IT APPEARS ON THE TENTATIVE MAP AND THAT ALL CONDITIONS OF N.R.S. 278.010 TO N.R.S. 278.630 INCLUSIVE AND LOCAL ORDINANCES HAVE BEEN COMPLIED WITH AND I AM SATISFIED THE SAME IS TECHNICALLY CORRECT AND THAT THE MONUMENTS AS SHOWN ARE OF THE CHARACTER AND OCCUPY THE POSITIONS INDICATED.

Robert A. Gardner 1/23/79
ENGINEER IN AND FOR THE COUNTY OF DOUGLAS, STATE OF NEVADA.

COUNTY CERTIFICATE:

I, YVONNE BERNARD, COUNTY CLERK IN AND FOR THE COUNTY OF DOUGLAS, STATE OF NEVADA, DO HEREBY CERTIFY THAT THIS MAP ENTITLED 'AMENDED MAP OF KINGSBURY PINES' WAS PRESENTED TO THE BOARD OF COMMISSIONERS OF DOUGLAS COUNTY AT A REGULAR MEETING THEREOF HELD ON THE 17th DAY OF April, 1979, AND THAT SAID BOARD OF COMMISSIONERS DID THEREON APPROVE AND ACCEPT THIS MAP.

I FURTHER CERTIFY THAT ALL BONDS AS REQUIRED BY LAW TO ACCOMPANY THIS MAP HAVE BEEN APPROVED BY SAID BOARD OF COMMISSIONERS AND FILED IN MY OFFICE. IN WITNESS WHEREOF I HERETO SET MY HAND THIS 27th DAY OF April, 1979.

Yvonne Bernard
COUNTY CLERK IN AND FOR THE COUNTY OF DOUGLAS, STATE OF NEVADA
By: Barbara J. Price, Chief Deputy

RECORDER'S CERTIFICATE:

FILED FOR RECORD AT THE REQUEST OF RALPH CRANDALL ON THE 2nd DAY OF MAY, 1979 AT 1 MINUTES PAST 2 O'CLOCK P.M. AS DOCUMENT NO. 22082 IN BOOK 379 OF MAPS AT PAGE 135, RECORDS OF DOUGLAS COUNTY, NEVADA.

Sandra M. Lewis
COUNTY RECORDER IN AND FOR THE COUNTY OF DOUGLAS, STATE OF NEVADA

CREEGAN & D'ANGELO
CONSULTING ENGINEERS
ZEPHYR COVE, NEVADA

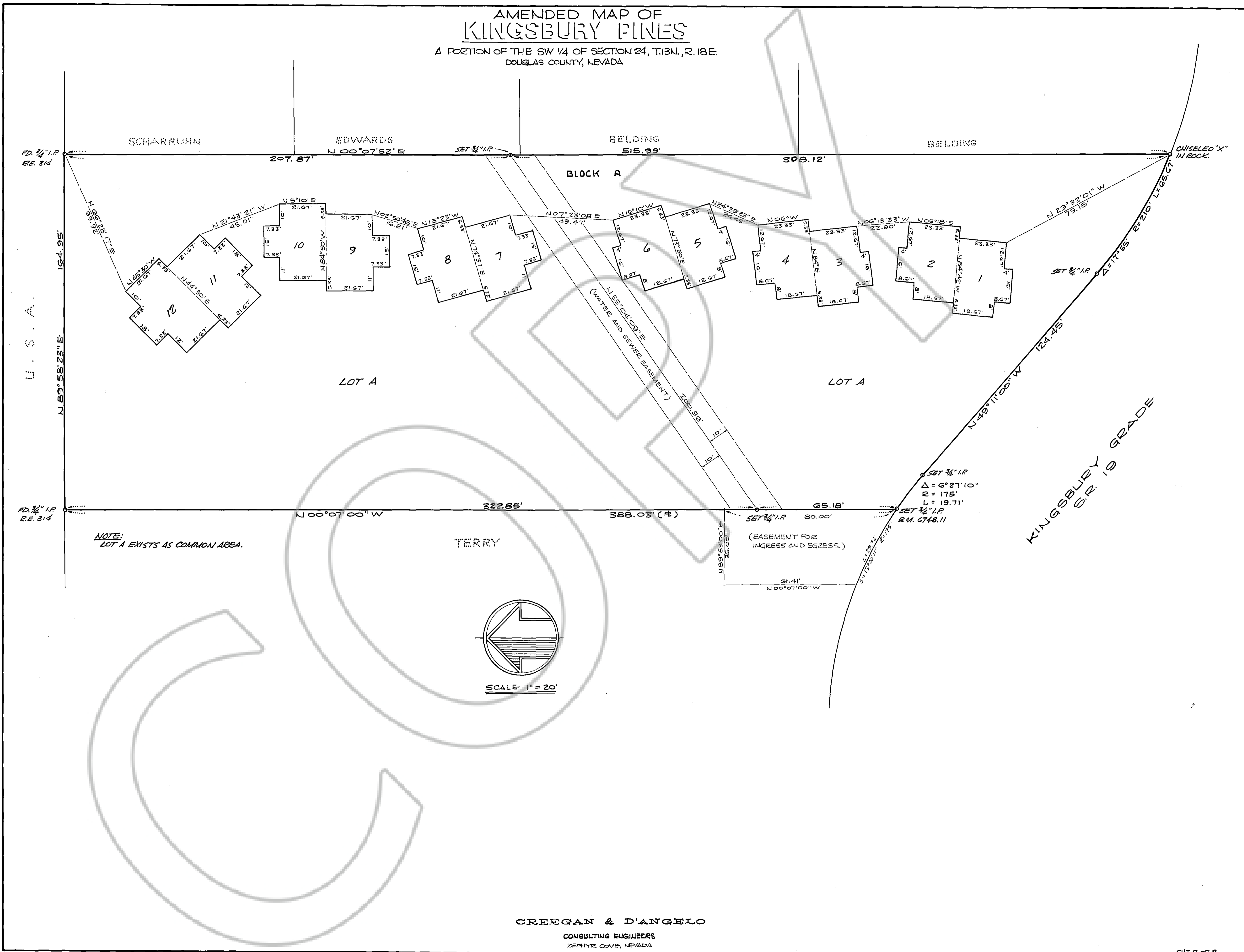
DRAWING NUMBER
Kingsbury Pines And
Sheet 2 of 2
PLAN HOLD CORPORATION • IRVINE, CALIFORNIA
REGISTERED PROFESSIONAL ARCHITECT
REGISTERED PROFESSIONAL ENGINEER

DRAWING NUMBER
PLAN HOLD CORPORATION • IRVINE, CALIFORNIA
REGISTERED PROFESSIONAL ARCHITECT
REGISTERED PROFESSIONAL ENGINEER

DRAWING NUMBER
PLAN HOLD CORPORATION • IRVINE, CALIFORNIA
REGISTERED PROFESSIONAL ARCHITECT
REGISTERED PROFESSIONAL ENGINEER

DRAWING NUMBER
PLAN HOLD CORPORATION • IRVINE, CALIFORNIA
REGISTERED PROFESSIONAL ARCHITECT
REGISTERED PROFESSIONAL ENGINEER

AMENDED MAP OF
KINGSBURY PINES
A PORTION OF THE SW 1/4 OF SECTION 24, T.13N., R. 18E.
DOUGLAS COUNTY, NEVADA



CREEGAN & D'ANGELO
CONSULTING ENGINEERS
ZEPHYRUS COVE, NEVADA