



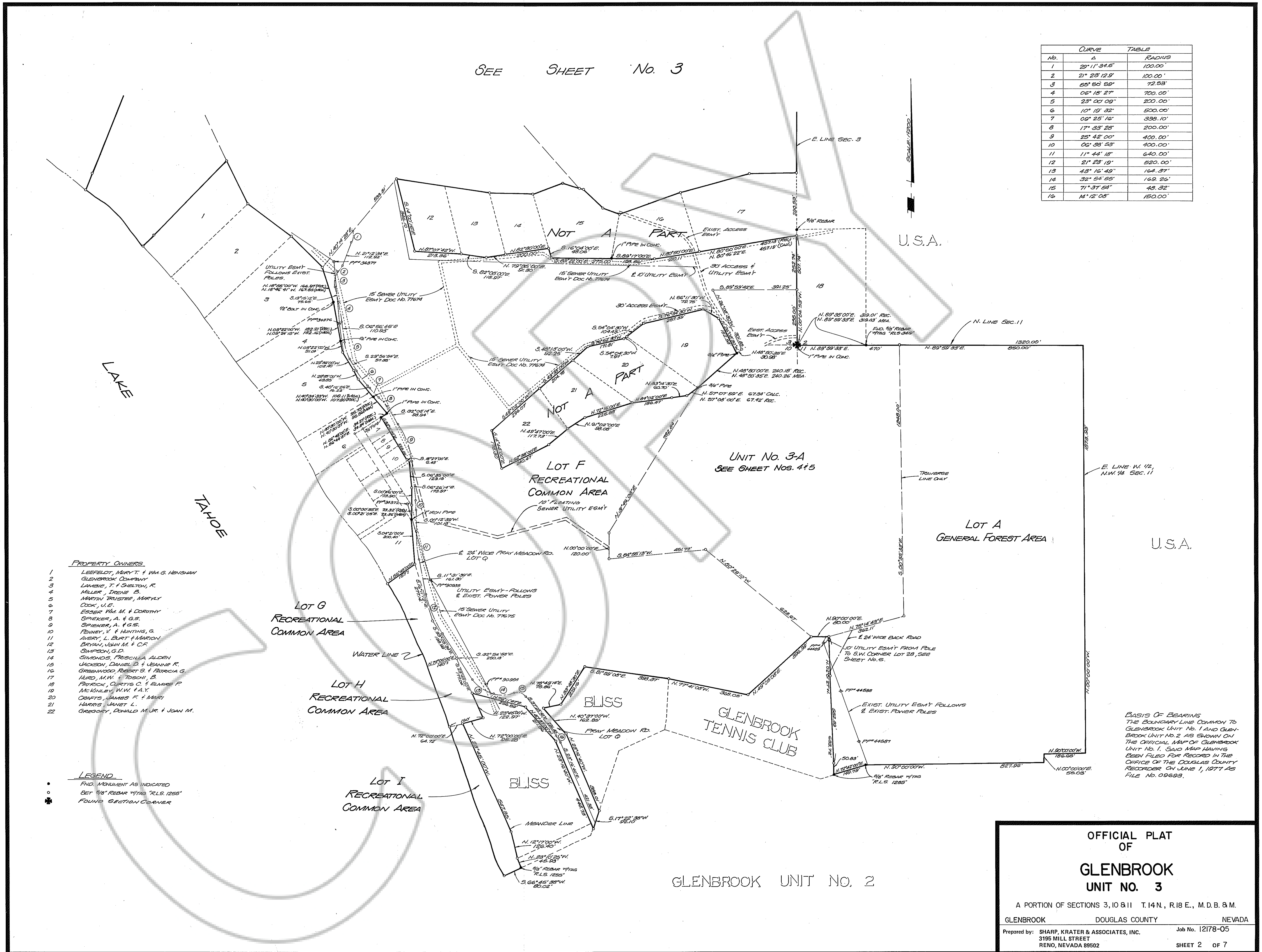


DRAWING NUMBER  
Glenbrook # 3  
Sheet 2 of 7

DRAWING NUMBER  
PLAN HOLD CORPORATION • IRVINE, CALIFORNIA  
RECORDED BY NUMBER 02048

DRAWING NUMBER  
PLAN HOLD CORPORATION • IRVINE, CALIFORNIA  
RECORDED BY NUMBER 02048

DRAWING NUMBER  
PLAN HOLD CORPORATION • IRVINE, CALIFORNIA  
RECORDED BY NUMBER 02048



SEE SHEET No. 3

CURVE TABLE		
No.	Δ	RADIUS
1	25° 11' 34.5"	100.00'
2	21° 28' 12.5"	100.00'
3	65° 50' 50"	72.53'
4	06° 18' 27"	700.00'
5	23° 00' 09"	200.00'
6	10° 10' 32"	500.00'
7	08° 25' 15"	339.10'
8	17° 33' 28"	200.00'
9	25° 42' 00"	400.00'
10	06° 38' 53"	400.00'
11	11° 44' 18"	640.00'
12	21° 23' 15"	820.00'
13	43° 16' 49"	164.37'
14	32° 54' 55"	162.26'
15	71° 37' 54"	49.32'
16	14° 12' 08"	150.00'

- PROPERTY OWNERS**
- 1 LEBERLOTT, MARY T. & WM. G. HENNING
  - 2 GLENBROOK COMPANY
  - 3 LAMBE, T. & SHELTON, K.
  - 4 MILLER, IRENE B.
  - 5 MARTIN TRUSTEE, MARVELY COOK, U.E.
  - 6 EDGAR, Wm. M. & DOROTHY SPIEKER, A. & G.S.
  - 7 SPIEKER, A. & G.S.
  - 8 PENNEY, V. & HUNTING, G.
  - 9 AVERY, L. BURT & MARGON
  - 10 BRYAN, JOHN M. & C.F. SIMPSON, G.D.
  - 11 SIMMONS, FRISCELLA ALDEN
  - 12 JACKSON, DANIEL D. & VERNIE K. GREENWOOD, ROBERT S. & PATRICIA G.
  - 13 HIRD, M.W. & TOSCHI, B.
  - 14 PATRICK, CURTIS C. & BLAINE P. MCKINLEY, W.W. & A.Y.
  - 15 CRAFTS, JAMES F. & MARI HARRIS, JANET L.
  - 16 GREGORY, DONALD M. JR. & JOHN M.

**LEGEND**

- FIND MONUMENT AS INDICATED
- BET 9/8" REBAR WITH "R.L.S. 1255"
- ✱ FOUND SECTION CORNER

**OFFICIAL PLAT OF GLENBROOK UNIT NO. 3**

A PORTION OF SECTIONS 3, 10 & 11 T.14N., R.18 E., M.D.B. & M.

GLENBROOK DOUGLAS COUNTY NEVADA

Prepared by: SHARP, KRATER & ASSOCIATES, INC. 3195 HILL STREET RENO, NEVADA 89502

Job No. 12178-05 SHEET 2 OF 7

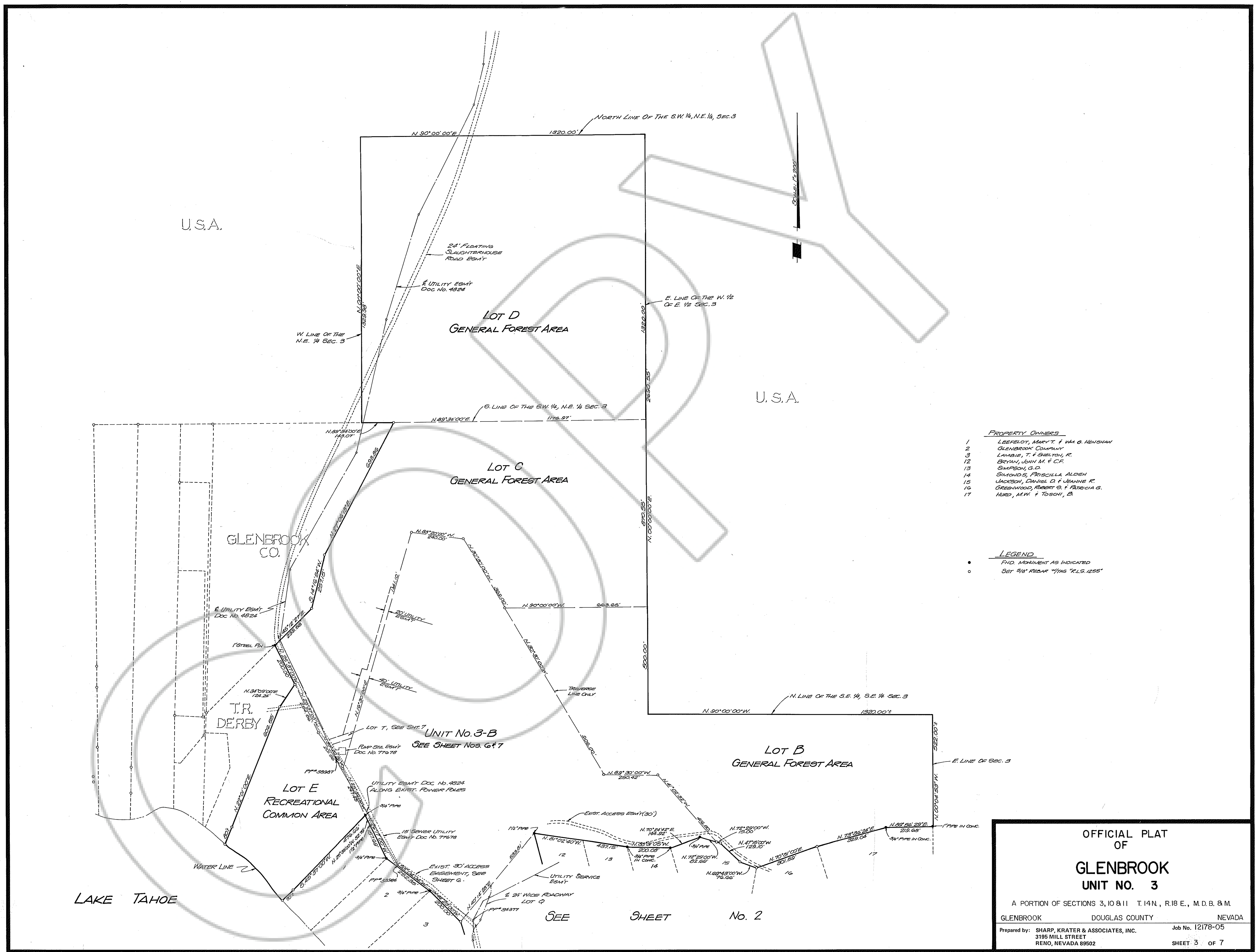


DRAWING NUMBER  
Glenbrook # 3  
Sheet 3 of 7  
PLAN HOLD CORPORATION • IRVINE, CALIF. 92614  
RECORDED BY NUMBER 07048  
EXPIRES DATE OF RECORD 08/01/07

DRAWING NUMBER  
PLAN HOLD CORPORATION • IRVINE, CALIFORNIA  
RECORDED BY NUMBER 07048  
EXPIRES DATE OF RECORD 08/01/07

DRAWING NUMBER  
PLAN HOLD CORPORATION • IRVINE, CALIFORNIA  
RECORDED BY NUMBER 07048  
EXPIRES DATE OF RECORD 08/01/07

DRAWING NUMBER  
PLAN HOLD CORPORATION • IRVINE, CALIFORNIA  
RECORDED BY NUMBER 07048  
EXPIRES DATE OF RECORD 08/01/07



- PROPERTY OWNERS**
- 1 LEEFLOTT, MARY T. & WM. G. HENSHAW
  - 2 GLENBROOK COMPANY
  - 3 LAMBIE, T. & SHELTON, R.
  - 12 BRYAN, JOHN M. & C.F. SIMPSON, S.D.
  - 13 SIMPSON, S.D.
  - 14 SIMMONS, PRISCILLA ALDEN
  - 15 JACKSON, DANIEL O. & JEANNE R. GREENWOOD, ROBERT G. & PATRICIA S.
  - 16 HURD, MARY & TOSCHI, B.
  - 17

- LEGEND**
- FND. MONUMENT AS INDICATED
  - SET 3/4" RIBBAR 1/4" I.P.S. 1255'

OFFICIAL PLAT  
OF  
**GLENBROOK  
UNIT NO. 3**  
A PORTION OF SECTIONS 3, 10 & 11 T. 14N., R. 18 E., M. D. B. & M.  
GLENBROOK DOUGLAS COUNTY NEVADA  
Prepared by: SHARP, KRATER & ASSOCIATES, INC. 3195 HILL STREET RENO, NEVADA 89502 Job No. 12178-05  
SHEET 3 OF 7





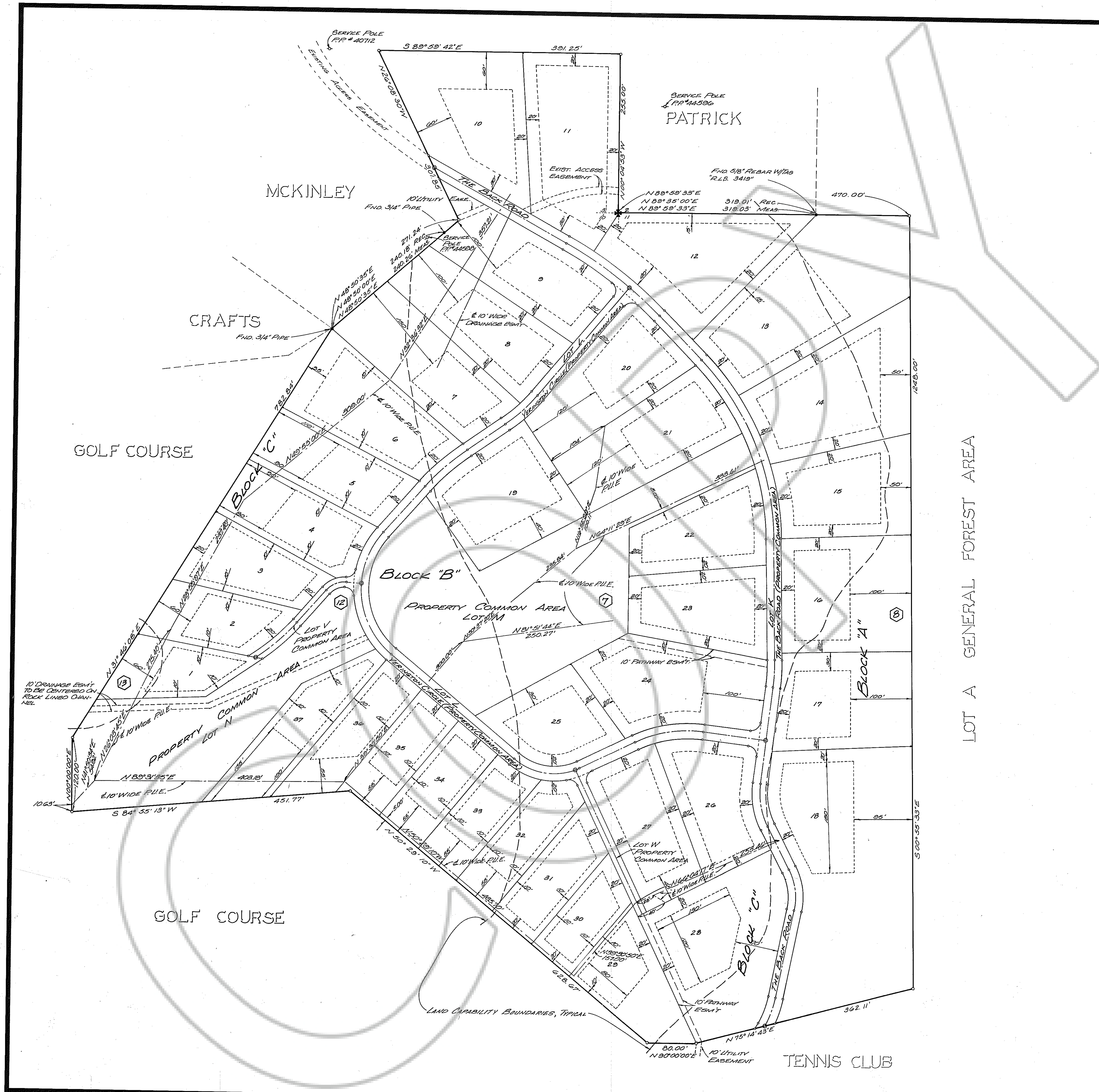


DRAWING NUMBER  
**Glenbrook # 3**  
 3A Sheet 5 of 7  
 PLAN HOLD CORPORATION • IRVINE, CALIFORNIA  
 REGISTERED PROFESSIONAL LAND SURVEYOR

DRAWING NUMBER  
 PLAN HOLD CORPORATION • IRVINE, CALIFORNIA  
 REGISTERED PROFESSIONAL LAND SURVEYOR

DRAWING NUMBER  
 PLAN HOLD CORPORATION • IRVINE, CALIFORNIA  
 REGISTERED PROFESSIONAL LAND SURVEYOR

DRAWING NUMBER  
 PLAN HOLD CORPORATION • IRVINE, CALIFORNIA  
 REGISTERED PROFESSIONAL LAND SURVEYOR



ALLOWABLE IMPERVIOUS SURFACES COVERAGE

LAND CAPABILITY AREA MAP ZONE	DESCRIPTION	ALLOWABLE PER LOT	TOTAL
MAP ZONE 7	LOTS 7, 8, 9, 10, 20, 21 AND 32	4627 S.F.	82,280 S.F.
	LOTS 10 THRU 16 AND 22 THRU 25	6427 S.F.	80,078 S.F.
	LOT 20, 30 AND 31	4627 S.F.	13,881 S.F.
MAP ZONE 8	LOTS 17, 18	6250 S.F.	12,500 S.F.
MAP ZONE 12	LOTS 1 THRU 6 AND 33 THRU 37	4753 S.F.	52,283 S.F.
MAP ZONE 13	LOTS 1 & 2	0 S.F.	0 S.F.

- LEGEND**
- FOUND MONUMENT AS INDICATED
  - SET 5/8" REBAR W/ TAG "R.L.S. 1255"
  - ✱ FOUND SECTION CORNER
  - SET 5/8" REBAR W/ TAG "R.L.S. 1255"
  - Ⓢ LAND CAPABILITY MAP ZONE DESIGNATION
  - ⊙ SET 2 1/2" DIA. BRASS CAP IN STREET MONUMENT WALL
  - Ⓜ BUILDING ENVELOPE

**OFFICIAL PLAT  
 OF  
 GLENBROOK  
 UNIT NO. 3-A**

A PORTION OF SECTIONS 3, 10 & 11 T. 14 N., R. 18 E., M. D. B. & M.  
 GLENBROOK DOUGLAS COUNTY NEVADA  
 3155 MILL STREET  
 RENO, NEVADA 89502

Job No. 12178-05  
 SHEET 5 OF 7

10-78 TELETYPE-POST TELESTAR 1513  
 REORDER #68-714

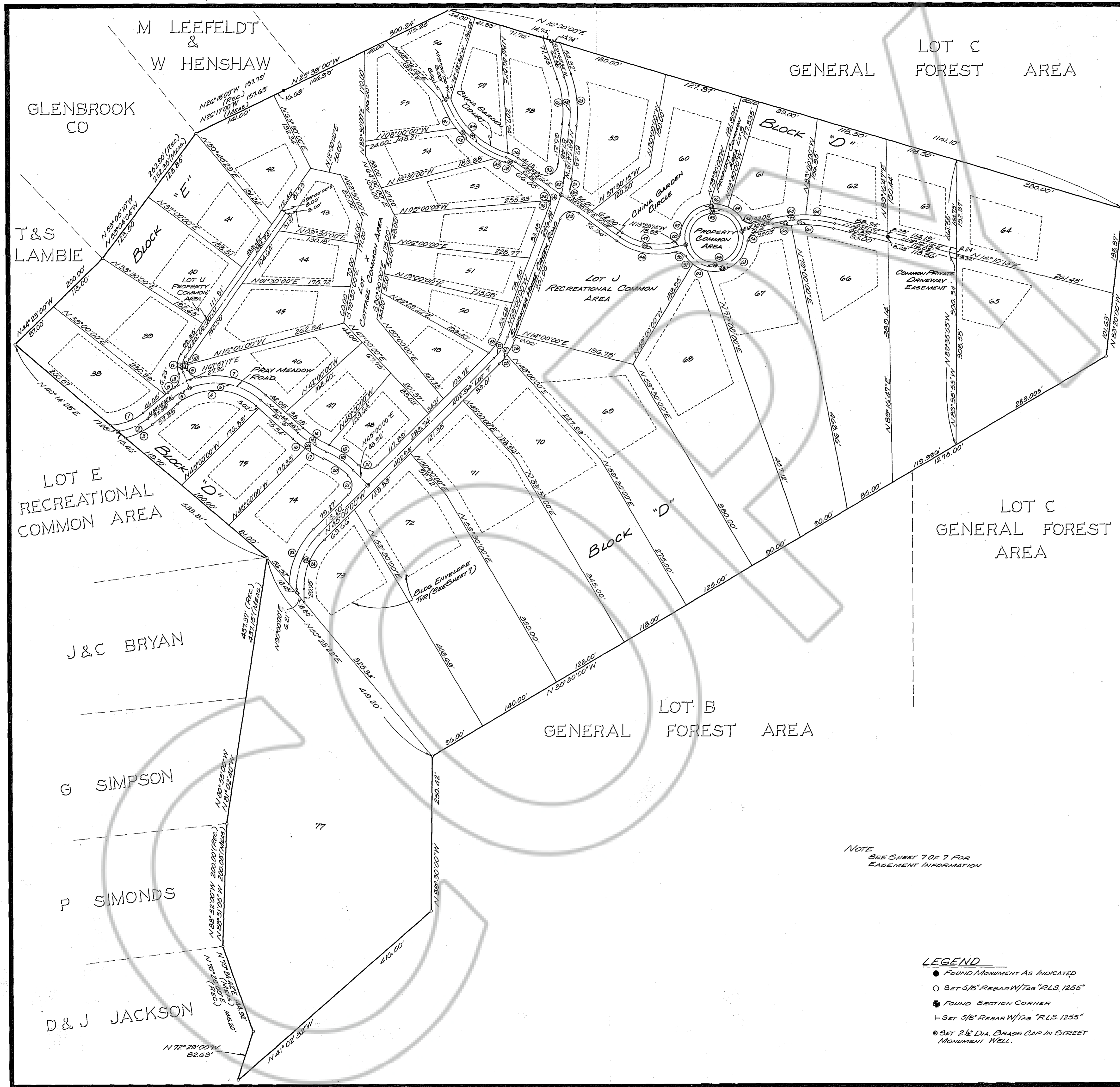


DRAWING NUMBER  
30  
Glenbrook #3  
Sheet 6 of 7  
FLY HOLE CORPORATION • IRVINE, CALIFORNIA  
REGISTERED PROFESSIONAL ENGINEER

DRAWING NUMBER  
FLY HOLE CORPORATION • IRVINE, CALIFORNIA  
REGISTERED PROFESSIONAL ENGINEER

DRAWING NUMBER  
FLY HOLE CORPORATION • IRVINE, CALIFORNIA  
REGISTERED PROFESSIONAL ENGINEER

DRAWING NUMBER  
FLY HOLE CORPORATION • IRVINE, CALIFORNIA  
REGISTERED PROFESSIONAL ENGINEER



SCALE 1" = 80'

**CURVE DATA TABLE**

Cv.No	DELTA	RADIUS	LENGTH	TANGENT
1	38°12'21"	88.00'	38.68'	30.48'
2	30°46'32"	100.00'	53.71'	27.52'
3	25°30'03"	112.00'	49.85'	25.34'
4	80°30'00"	98.00'	137.69'	82.96'
5	16°42'49"	110.00'	32.09'	16.16'
6	63°47'11"	110.00'	122.46'	68.45'
7	53°00'08"	122.00'	112.84'	60.83'
8	05°55'44"	122.00'	12.62'	6.32'
9	106°33'22"	18.24'	53.02'	24.45'
10	29°42'18"	18.24'	9.42'	4.84'
11	57°02'43"	26.24'	26.13'	14.26'
12	57°02'41"	34.24'	34.09'	18.61'
13	79°12'53"	18.24'	25.22'	13.09'
14	17°18'46"	166.80'	50.40'	25.40'
15	17°18'46"	178.80'	54.03'	27.22'
16	07°20'11"	190.80'	24.45'	12.23'
17	09°58'35"	190.80'	33.22'	16.65'
18	20°34'18"	162.00'	55.17'	29.40'
19	20°34'18"	150.00'	53.86'	27.22'
20	20°34'18"	138.00'	49.55'	25.04'
21	90°00'00"	21.92'	34.43'	21.92'
22	41°38'02"	137.00'	99.55'	52.09'
23	45°00'00"	125.00'	98.17'	51.78'
24	45°00'00"	113.00'	88.75'	46.81'
25	09°42'31"	112.00'	18.98'	9.51'
26	14°17'29"	112.00'	27.94'	14.04'
27	24°00'00"	100.00'	41.89'	21.25'
28	24°00'00"	88.00'	36.86'	18.71'
29	104°25'16"	20.00'	36.45'	25.79'
30	64°03'11"	15.00'	16.77'	9.38'
31	03°22'46"	262.00'	15.45'	7.73'
32	06°11'54"	250.00'	27.05'	13.54'
33	119°13'35"	20.00'	41.65'	34.18'
34	56°51'23"	20.00'	19.85'	10.83'
35	18°43'21"	20.00'	6.54'	3.30'
36	18°25'16"	58.00'	13.65'	6.41'
37	18°25'16"	50.00'	16.08'	8.11'
38	18°25'16"	42.00'	13.50'	6.81'
39	54°00'00"	142.00'	133.83'	72.35'
40	54°00'00"	150.00'	141.37'	76.43'
41	18°15'47"	158.00'	50.36'	25.40'
42	29°13'17"	158.00'	80.58'	41.19'
43	06°30'56"	158.00'	17.97'	8.99'
44	25°05'07"	192.00'	84.06'	42.72'
45	25°05'07"	180.00'	78.81'	40.05'
46	25°05'07"	168.00'	73.55'	37.38'
47	48°54'30"	102.00'	87.07'	46.59'
48	48°54'30"	110.00'	93.90'	50.02'
49	48°54'30"	118.00'	100.73'	53.66'
50	70°55'50"	14.81'	18.33'	10.55'
51	17°58'28"	55.00'	17.25'	8.70'
52	28°15'37"	55.00'	27.13'	13.85'
53	95°30'49"	55.00'	91.69'	60.57'
54	70°49'04"	15.00'	18.54'	10.66'
55	32°44'36"	55.00'	31.43'	16.16'
56	31°57'51"	55.00'	30.68'	15.75'
57	77°02'27"	55.00'	79.95'	49.78'
58	180°00'00"	47.00'	147.65'	
59	180°00'00"	39.00'	122.52'	
60	08°18'49"	202.00'	29.31'	14.68'
61	19°20'38"	202.00'	68.20'	34.43'
62	27°39'27"	210.00'	101.37'	51.69'
63	14°44'26"	218.00'	36.09'	28.20'
64	12°55'01"	218.00'	49.15'	24.68'
65	136°15'40"	18.24'	43.38'	43.44'
66	17°18'46"	190.80'	57.65'	29.05'
67	24°00'00"	112.00'	46.91'	23.81'
68	75°34'44"	20.00'	26.38'	13.51'
69	141°44'34"	55.00'	136.07'	158.60'
70	54°00'00"	158.00'	148.91'	80.51'
71	27°39'27"	202.00'	97.51'	49.72'
72	27°39'27"	218.00'	103.23'	53.66'

NOTE  
SEE SHEET 7 OF 7 FOR  
EASEMENT INFORMATION

- LEGEND**
- FOUND MONUMENT AS INDICATED
  - SET 5/8" REBAR W/TAG "R.L.S. 1255"
  - ✱ FOUND SECTION CORNER
  - └ SET 5/8" REBAR W/TAG "R.L.S. 1255"
  - ⊙ SET 2 1/2" DIA. BRASS CAP IN STREET MONUMENT WELL.

**OFFICIAL PLAT  
OF  
GLENBROOK  
UNIT NO. 3-B**

A PORTION OF SECTION 3 T.14N., R.18E., M.D.B. & M.

GLENBROOK      DOUGLAS COUNTY      NEVADA

Prepared by: SHARP, KRATER & ASSOCIATES, INC.      Job No. 12178-05  
3195 MILL STREET      RENO, NEVADA 89502      SHEET 6 OF 7

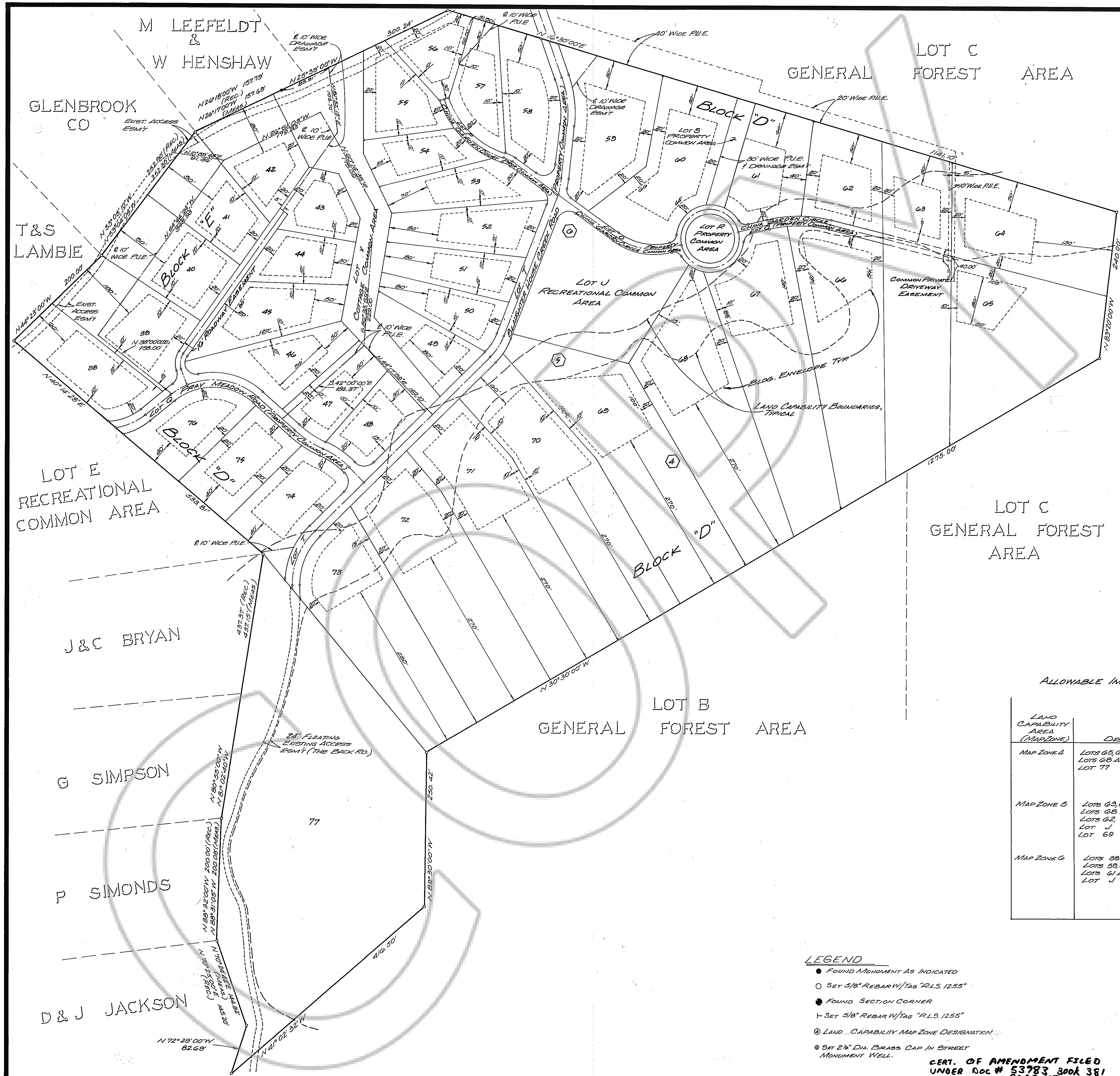


DRAWING NUMBER  
**Glenbrook #3**  
 30 Sheet 7 of 7  
 PLAN HOLD CORPORATION • IRVINE, CALIFORNIA  
 RECORD BY NUMBER 07048  
 RECORD DATE OF FILE 03/13/11

DRAWING NUMBER  
 PLAN HOLD CORPORATION • IRVINE, CALIFORNIA  
 RECORD BY NUMBER 07048  
 RECORD DATE OF FILE 03/13/11

DRAWING NUMBER  
 PLAN HOLD CORPORATION • IRVINE, CALIFORNIA  
 RECORD BY NUMBER 07048  
 RECORD DATE OF FILE 03/13/11

DRAWING NUMBER  
 PLAN HOLD CORPORATION • IRVINE, CALIFORNIA  
 RECORD BY NUMBER 07048  
 RECORD DATE OF FILE 03/13/11



SCALE 1"=80'

ALLOWABLE IMPERVIOUS SURFACES COVERAGE

LAND CAPABILITY AREA (MAP ZONE)	DESCRIPTION	ALLOWABLE PER LOT	TOTAL
MAP ZONE 4	LOTS 65, 66, 69, 70 AND 71	4700 S.F.	23,500 S.F.
	LOTS 68 AND 72	1000 S.F.	2,000 S.F.
	LOT 77	7520 S.F.	7520 S.F.
MAP ZONE 5	LOTS 63, 64, 67 AND 73	5223 S.F.	20,892 S.F.
	LOTS 68 AND 72	5000 S.F.	10,000 S.F.
	LOTS 62, 70 AND 71	423 S.F.	1,269 S.F.
	LOT J	800 S.F.	800 S.F.
	LOT 69	600 S.F.	600 S.F.
MAP ZONE 6	LOTS 68 THRU 69	3525 S.F.	80,325 S.F.
	LOTS 69, 70, 74, 75, 76	6025 S.F.	25,125 S.F.
	LOTS 61 AND 62	4700 S.F.	9,400 S.F.
	LOT J	17,000 S.F.	17,000 S.F.

- LEGEND**
- FOUND MONUMENT AS INDICATED
  - SET 5/8" REBAR W/TAG "R.L.S. 1255"
  - ⊕ FOUND SECTION CORNER
  - ⊥ SET 5/8" REBAR W/TAG "R.L.S. 1255"
  - Ⓞ LAND CAPABILITY MAP ZONE DESIGNATION
  - ⊙ SET 2 1/2" DIA. BRASS CAP IN STREET MONUMENT WELL.

CERT. OF AMENDMENT FILED  
 UNDER Doc # 53783 BOOK 381  
 PAGE 717

OFFICIAL PLAT  
 OF  
**GLENBROOK**  
 UNIT NO. 3-B  
 A PORTION OF SECTION 3 T.14N., R.18E., M.D.B. & M.  
 GLENBROOK DOUGLAS COUNTY NEVADA  
 Prepared by: SHARP, KRATER & ASSOCIATES, INC. Job No. 12178-05  
 3195 MILL STREET RENO, NEVADA 89502 SHEET 7 OF 7