

DRAWING NUMBER  
C.E.S.

PLAN HOLD CORPORATION • IRVINE, CALIFORNIA  
REGISTERED PROFESSIONAL ENGINEER  
REGISTERED NUMBER 10704

DRAWING NUMBER

PLAN HOLD CORPORATION • IRVINE, CALIFORNIA  
REGISTERED PROFESSIONAL ENGINEER  
REGISTERED NUMBER 10704

DRAWING NUMBER

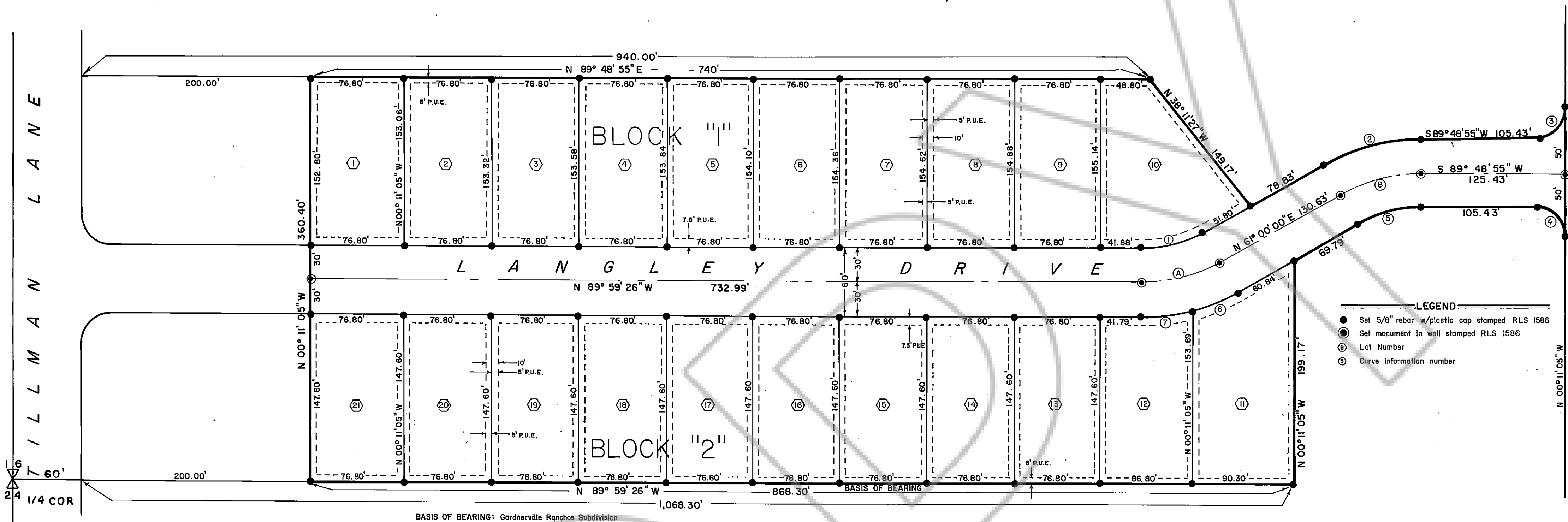
PLAN HOLD CORPORATION • IRVINE, CALIFORNIA  
REGISTERED PROFESSIONAL ENGINEER  
REGISTERED NUMBER 10704

DRAWING NUMBER

PLAN HOLD CORPORATION • IRVINE, CALIFORNIA  
REGISTERED PROFESSIONAL ENGINEER  
REGISTERED NUMBER 10704

# C.E.S. Subdivision

LOCATED WITHIN  
SECTION 16  
TOWNSHIP 12 NORTH, RANGE 20 EAST,  
MDB&M  
DOUGLAS COUNTY, NEVADA



BASIS OF BEARING: Gardnerville Ranches Subdivision  
Unit No. 5 Map, North Line of the NE 1/4, Section 21,  
Township 12 North, Range 20 East, M.D.B. & M., Docu-  
ment No. 35914 dated April 10, 1967.

### OWNERS' CERTIFICATE

Know all men by these presents, that C.E. Swift and C.E.S. Investments, Inc., a Nevada Corporation, owners of the parcel of land described and shown hereon, hereby consents to the preparation and recording of this map in accordance with and for the uses set forth in the Nevada Revised Statutes, Chapters 116 and 278 and subsequent amendments thereto, and Douglas County Code 16, and does hereby offer and convey for dedication to the County of Douglas, State of Nevada, for the use of the public those portions of said lands designated on this map as avenues and other public ways and does hereby offer and dedicate for particular purposes the rights-of-way and easements as shown for gas, water, sewer and drainage pipes, for poles, guys and anchors for conductor wire and conduit for electrical and telephone service, together with any all appurtenances thereto, on, across and under all land lying outside the individual sites shown hereon. In witness whereof, said corporation has caused its corporate name and seal to be affixed hereto, and this instrument to be executed by its duly authorized officer.

*C.E. Swift*  
C. E. Swift, Individual  
*C.E. Swift*  
C. E. Swift, President  
C. E. S. Investments, Inc.

State of Nevada ss.  
Carson City  
On Feb 26, 1980, personally appeared before me, a Notary Public, C. E. Swift, President of C.E.S. Investments, Inc., who acknowledged that he executed the above instrument.

GERALDINE B. TYSON  
Notary Public - State of Nevada  
County of Carson  
My Commission Expires April 26, 1981

### TITLE CERTIFICATE

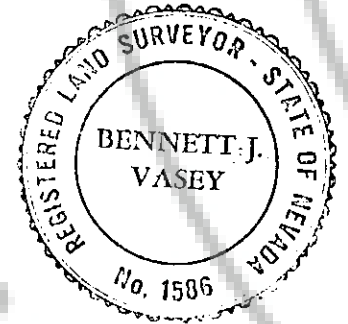
This is to certify that C. E. Swift and C.E.S. Investments, Inc. are the only parties having record title interest in the tract of land shown on this map.

*Margaret E Zinke* 4/27/1980  
Silver State Title Company Date

**VASEY ENGINEERING CO., INC.**  
VALLEY PROFESSIONAL CENTER  
P.O. Box 1164 Minden, Nevada 89423  
(702) 782-2382 (702) 782-5642  
Date JANUARY 1980 Drawn By MFR  
Job No. M-268 Approved By B.J.V.

### SURVEYOR'S CERTIFICATE

I, B. J. Vasey, a Registered Land Surveyor in the State of Nevada, certify that:  
1. This is a true and accurate representation of the lands surveyed under my supervision at the instance of C. E. Swift and C. E. S. Investments, Inc., the owners.  
2. The lands surveyed lie within Section 16, Township 12 North, Range 20 East, Mount Diablo Baseline and Meridian and the survey was completed on APRIL 28, 1980.  
3. This plat complies with the applicable state statutes and any local ordinances.  
4. The monuments will be of the character shown and occupy the positions indicated by APRIL 30, 1981, and that an appropriate performance bond has been posted with Douglas County to assure their installation.



*B. J. Vasey* 28 APRIL 1980  
B. J. Vasey, R.L.S. No. 1506 Date

### COUNTY ENGINEER'S CERTIFICATE

I, Warner C. Phillips, Engineer in and for the County of Douglas, State of Nevada, do hereby certify that I have examined this final map entitled "C.E.S. Subdivision" and that said map is substantially the same as it appears on the Tentative Map, that all conditions of state laws and local ordinances have been complied with and that I am satisfied the same is technically correct.

*Warner C Phillips* June 30, 1980  
Warner C. Phillips Date  
Douglas County Engineer

### COUNTY CERTIFICATE

State of Nevada ss.  
County of Douglas  
I, Yvonne Bernard, Clerk in and for the County of Douglas, State of Nevada, do hereby certify that the above and foregoing plat entitled "C.E.S. Subdivision" was presented to the Board of Commissioners of Douglas County, at a regular meeting thereof, held on the 22 day of MAY, 1980, and that said Board of Commissioners did thereon, by resolution duly passed and adopted at said meeting, approve this final map and accept the dedications as designated hereon. In witness whereof, I have set my hand this 18 day of July, 1980.

*Yvonne Bernard*  
Clerk in and for the County of Douglas, State of Nevada  
*By: Barbara J. ...*

### PLANNING COMMISSION CERTIFICATE

Reviewed, approved and recommended to the County Commissioners of Douglas County by the Douglas County Planning Commission and the map substantially complies with the Tentative Map.

Dated this 30th day of June, 1980.  
*James B. ...*  
Douglas County Planning Director

### HEALTH DEPARTMENT CERTIFICATE

This final map is approved by the Division of Health of the Department of Human Resources concerning sewage disposal, water pollution, water quality and water supply facilities in accordance with Nevada Revised Statutes. This approval predicates community water supply and community sewage disposal.

*James A. Maston* 2/26/80  
Division of Health Date

### DIVISION OF WATER RESOURCES CERTIFICATE

This final map is approved by the Division of Water Resources of the Department of Conservation and Natural Resources concerning water quantity, subject to the review of approval on file in this office.

*Robert W. ...* 2-26-80  
Division of Water Resources Date

### FIRE DEPARTMENT CERTIFICATE

The firefighting facilities and accesses shown on these plans are hereby approved by the Douglas County Fire Department.

*Robert W. ...* 6-26-80  
Douglas County Fire Department Date

### UTILITY COMPANIES' CERTIFICATE

The easements as shown on this map, unless otherwise indicated, are utility easements to be used for the specific purpose of electrical and telephone service and are hereby checked and approved.

*Steven A. ...* 6-25-80  
Sierra Pacific Power Company Date  
*U. ...* 6-25-80  
Continental Telephone Company Date

CURVE DATA							
Right-of-Way Curves				Center Line Curves			
Curve No.	Δ	R	L T	Curve No.	Δ	R	L T
1	28°00'34"	110'	25.69' 28.46'	A	28°00'34"	140'	36.22'
2	28°48'55"	170'	65.50' 43.67'	B	28°48'55"	140'	70.41'
3	90°00'00"	20'	31.42' 20.00'				
4	90°00'00"	20'	31.42' 20.00'				
5	28°48'55"	110'	65.32' 28.26'				
6	13°39'44"	170'	40.54' 20.38'				
7	18°20'50"	170'	45.54' 22.97'				

### TAX CERTIFICATE

*MARGARET ZINKE*, hereby certify that according to the Records of the County of Douglas, State of Nevada, there are no liens against this subdivision or any part thereof for unpaid state, county, municipal, or local taxes or special assessments not yet payable, provided that the final map is accepted for record and filed prior to the next succeeding lien date.

*Margaret E Zinke* 6-27-1980  
Silver State Title Company Date

### RECORDER'S CERTIFICATE

Filed for record at the request of *C.E. SWIFT* on the 2 day of July, 1980, at 19 minutes past 9 o'clock A.M., as Instrument No. 45276 in Book 720 of Maps, Page 111, in the Official Records of Douglas County, Nevada.

*Trina ...*  
Douglas County Recorder

**CERTIFICATE OF AMENDMENT**  
FILED 8-13-82 DOC# 70146  
BOOK 882 PAGE 575

**CERTIFICATE OF AMENDMENT**  
FILED 8-13-82 DOC# 70147  
BOOK 882 PG 576