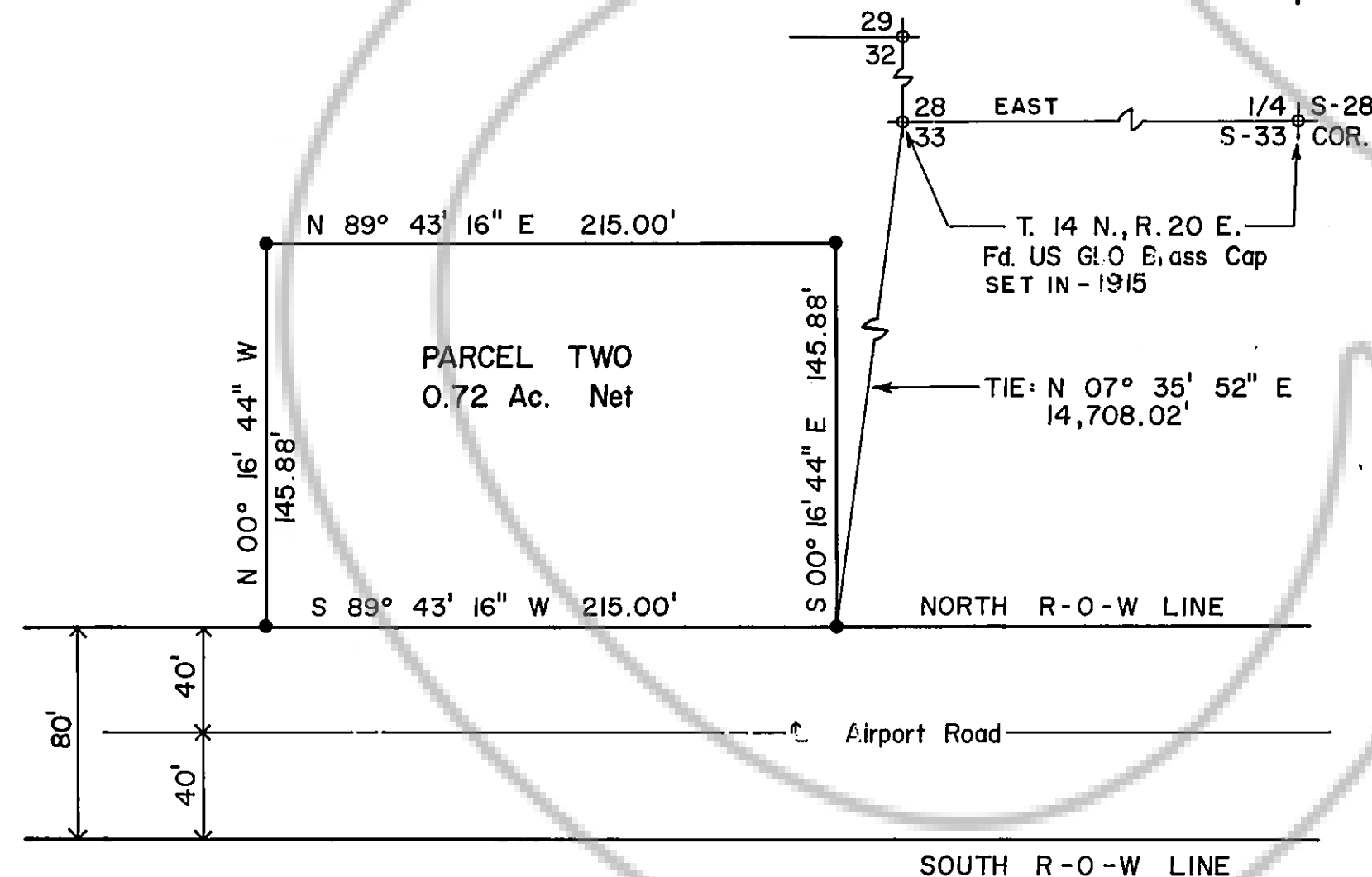
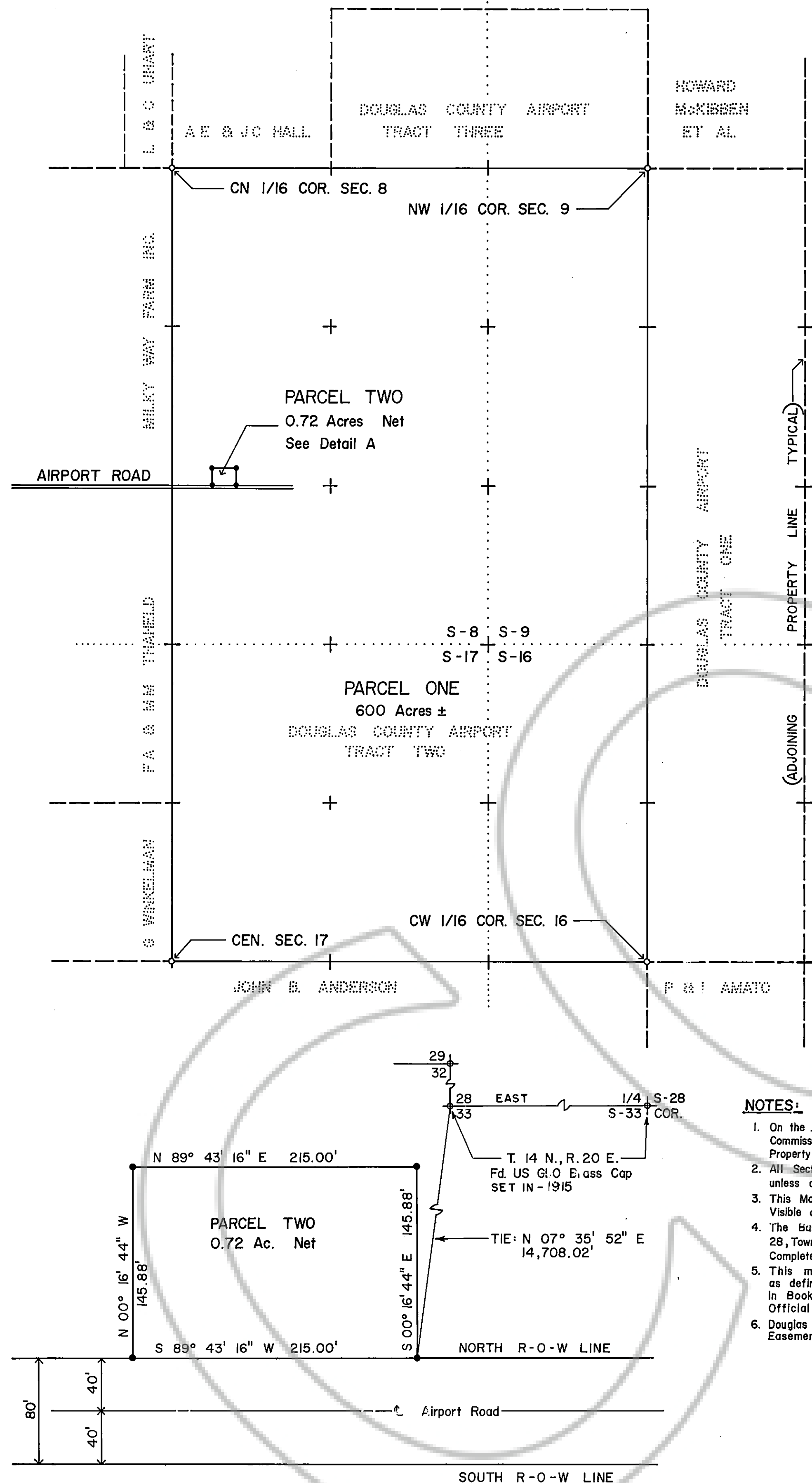




# PARCEL MAP NUMBER ONE FOR DOUGLAS COUNTY, NEVADA

LOCATED IN A PORTION OF SECTIONS 8,9,16 & 17 TOWNSHIP 13 NORTH, RANGE 20 EAST MOUNT DIABLO BASE LINE AND MERIDIAN

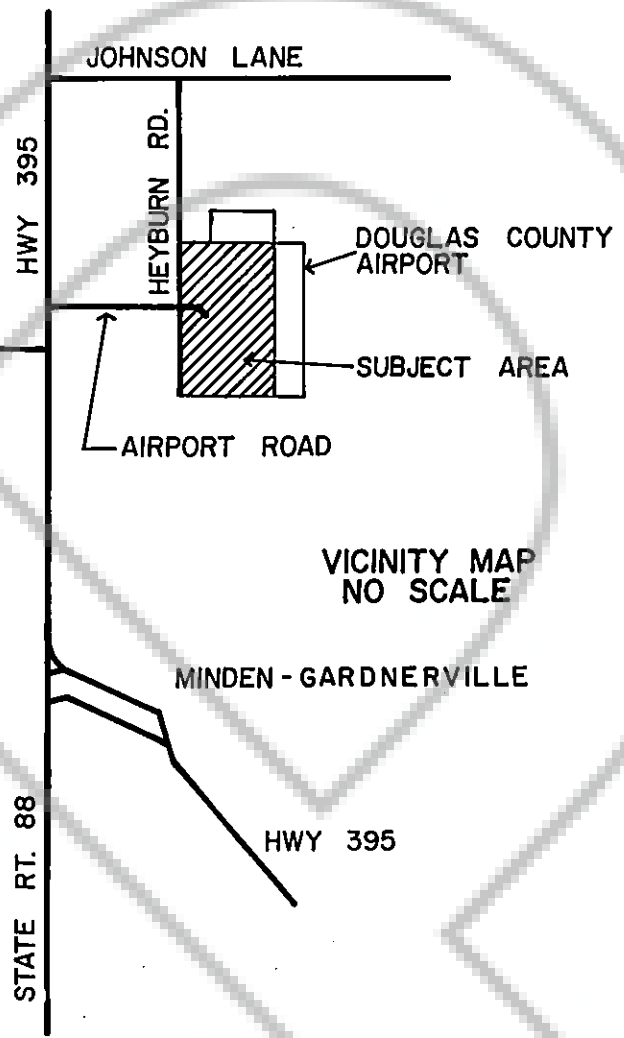


### NOTES:

- On the 6th day of NOVEMBER, 1980, The Douglas County Planning Commission Waived the Survey Requirement for the Perimeter of the Airport Property Per the Provisions of NRS 278.463.
- All Section Designations are per Township 13 North, Range 20 East, M.D.B. & M., unless otherwise noted, unsurveyed.
- This Map is Subject to all Rights-of-Way, Easements, and Reservations, Visible or of Public Record.
- The Basis of Bearing for this Survey is the South Section Line of Section 28, Township 14 North, Range 20 East, M.D.B. & M., per the GLO Survey Completed June 22, 1915.
- This map is a division of Tract Two of the Douglas County Airport as defined in Book W at Page 237; Tracts One and Three are recorded in Book W, Page 236 and Book W, Page 475 respectively, all of the Official Douglas County Records.
- Douglas County grants by these presents a five foot Public Utility Easement along the interior perimeter of Parcel One.

### LEGEND

- Set 5/8" Rebar w/Tag Stamped rLS 1586
- Nothing Found or Set.
- ◆ Monument as Described.
- ..... Section Line, Unsurveyed
- + Subsectional Corner, Unsurveyed
- R-O-W Right of Way Line



### OWNER'S CERTIFICATE

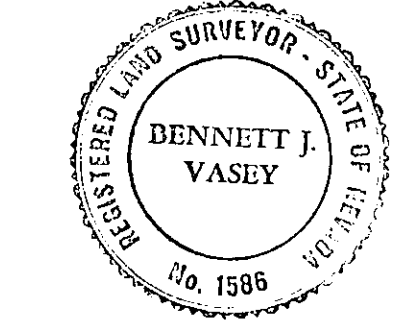
I, KENNETH KJER, Chairman of the Douglas County Board of Commissioners, do hereby certify that Douglas County, Nevada, is the legal owner of the tract of land designated on this map; and, that this map was prepared at the request of the aforesaid Commissioners; furthermore, Douglas County grants permanent easements for utility installation and access as shown on this map.

*Kenneth Kjer*  
KENNETH KJER, CHAIRMAN  
DOUGLAS COUNTY BOARD OF COMMISSIONERS

ATTEST *Yvonne Bernard*  
YVONNE BERNARD  
DOUGLAS COUNTY CLERK

### SURVEYOR'S CERTIFICATE

I, B.J. VASEY, a Registered Land Surveyor in the State of Nevada, certify that: this is a true and accurate representation of the lands surveyed under my supervision at the instance of Douglas County; the lands surveyed lie within Sections 8,9,16 & 17, Township 13 North, Range 20 East, M.D.B. & M.; the survey was completed on the 6th day of NOVEMBER, 1980; this plat complies with the applicable state statutes and local ordinances; the monuments are of the character shown and occupy the positions indicated.



*B.J. Vasey*  
B.J. VASEY R.L.S. 1586

### PLANNING COMMISSION CERTIFICATE

I, LAUNA MARTIN, Secretary to the Douglas County Planning Commission, do hereby certify that this Parcel Map was approved and accepted this 29th day of JANUARY, 1981, by the Douglas County Planning Commission.

*Launa R. Martin* 7/13/81  
LAUNA MARTIN SECRETARY

### COUNTY ENGINEER'S CERTIFICATE

I, WARNER C. PHILLIPS, Engineer in and for Douglas County, Nevada, hereby certify that I have examined this map and all conditions, local ordinances, and other reviewing agencies have been complied with.

*Warner C. Phillips* 7/13/81  
WARNER C. PHILLIPS COUNTY ENGINEER

### UTILITY CERTIFICATE

We, Sierra Pacific Power Company and Continental Telephone Company hereby accept and approve the easements shown on this map. This approval does not guarantee accessibility for service.

*Stewart Row* 7-2-81  
SIERRA PACIFIC POWER COMPANY

*H. Feltner* 07-06-81  
CONTINENTAL TELEPHONE COMPANY

### RECORDER'S CERTIFICATE

Filed for record this 17th day of JULY, 1981, at 33 minutes past 1 o'clock P.M. in Book 781 of Official Records at Page 1219 as Document Number 58339. Recorded at the request of Douglas County, Nevada.

*John R. Lowry* Deputy  
DOUGLAS COUNTY RECORDER

PARCEL MAP NUMBER ONE FOR DOUGLAS COUNTY, NEVADA  
LOCATED IN A PORTION OF SECTIONS 8,9,16 & 17, T.13 N., R.20 E., M.D.B. & M.  
DOUGLAS COUNTY, NEVADA SHEET 1 of 1