

SURVEYORS CERTIFICATE

I, Bruce R. Scott, a Registered Land Surveyor in the state of Nevada, certify that:

1. This is a true and accurate representation of the lands surveyed under my supervision at the instance of Douglas County, Nevada.
2. The lands surveyed lie within Sections 8,9,16,17, T.13N, R.20E. M.D.B. & M. and the survey was completed on June 30, 1983.
3. This plat complies with the applicable state statutes and any local ordinances.
4. The monuments are of the character shown and occupy the positions indicated.

Bruce R. Scott
 Bruce R. Scott R.L.S. 3579

RECORDER'S CERTIFICATE

Filed for record this 13th day of July 1983, at 2:23 P.M. in book 283 of official records, at page 2235, document no. 84118 recorded at the request of Douglas County, Nevada.

Carol A. Deane (Deputy)
 Douglas County Recorder

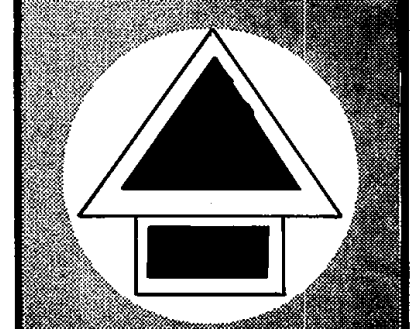
LEGEND

- UNLESS OTHERWISE NOTED:
- ◆ Found Section Corner as noted.
 - ▲ Found 1/4 Corner as noted.
 - Set 5/8" R Bar W/Alum. Cap R.L.S. 3579
 - ◇ Calculated Section Corner (nothing set)
 - ⊠ Calculated 1/4 Corner (nothing set)
 - (R) Record information per Map Document No. 75477
 - (M) Measured information
 - Found as noted.

Basis of Bearing: The north line of section 15, T.13N, R.20E. per Map Document No. 75477, (N89°22'38"W).

RECORD OF SURVEY NO. 8
FOR
DOUGLAS COUNTY
NEVADA

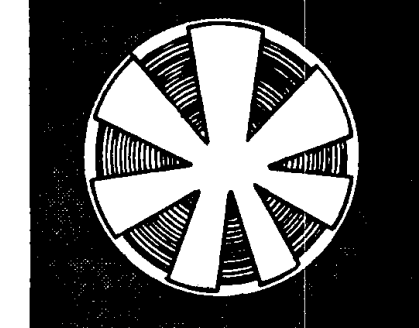
LOCATED IN SECTIONS 8,9,16,17
 T.13N. R.20E.
 DOUGLAS COUNTY
 NEVADA

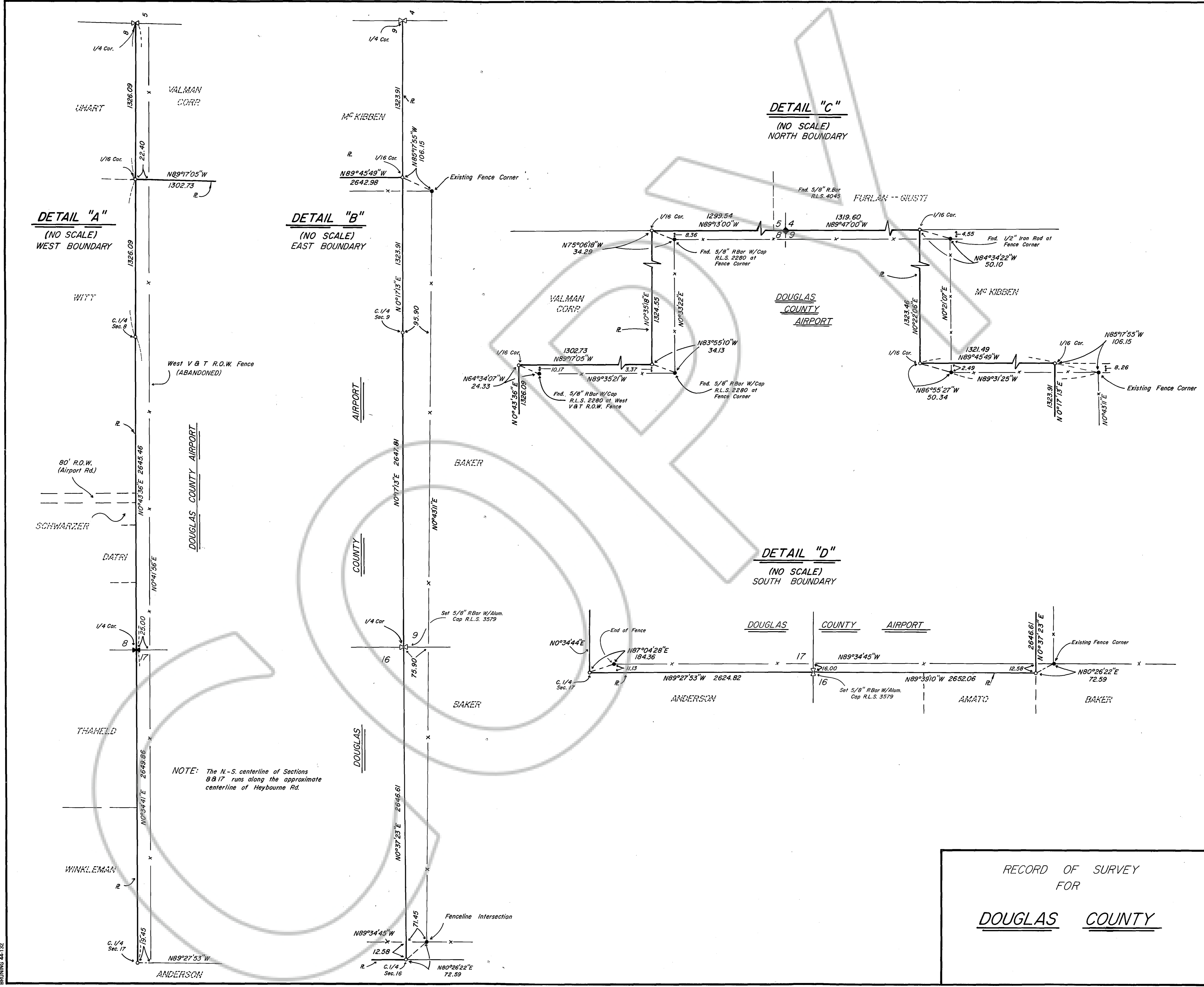


NORTH
 1" = 600'

RESOURCE CONCEPTS INC.
 (702) 883 - 1600
 340 North Minnesota Street, Carson City, Nevada 89701
 ENGINEERING · ECONOMICS
 RESOURCE PLANNING

Sheet / of 2





DETAIL "A"
(NO SCALE)
WEST BOUNDARY

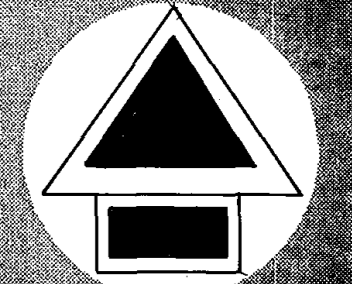
DETAIL "B"
(NO SCALE)
EAST BOUNDARY

DETAIL "C"
(NO SCALE)
NORTH BOUNDARY

DETAIL "D"
(NO SCALE)
SOUTH BOUNDARY

NOTE: The N-S centerline of Sections 8 & 17 runs along the approximate centerline of Heybourne Rd.

RECORD OF SURVEY
FOR
DOUGLAS COUNTY



NORTH

RESOURCE CONCEPTS INC.
340 North Minnesota Street, Carson City, Nevada 89701
(702) 883 - 1600

ENGINEERING · ECONOMICS
RESOURCE PLANNING

Sheet 2 of 2

