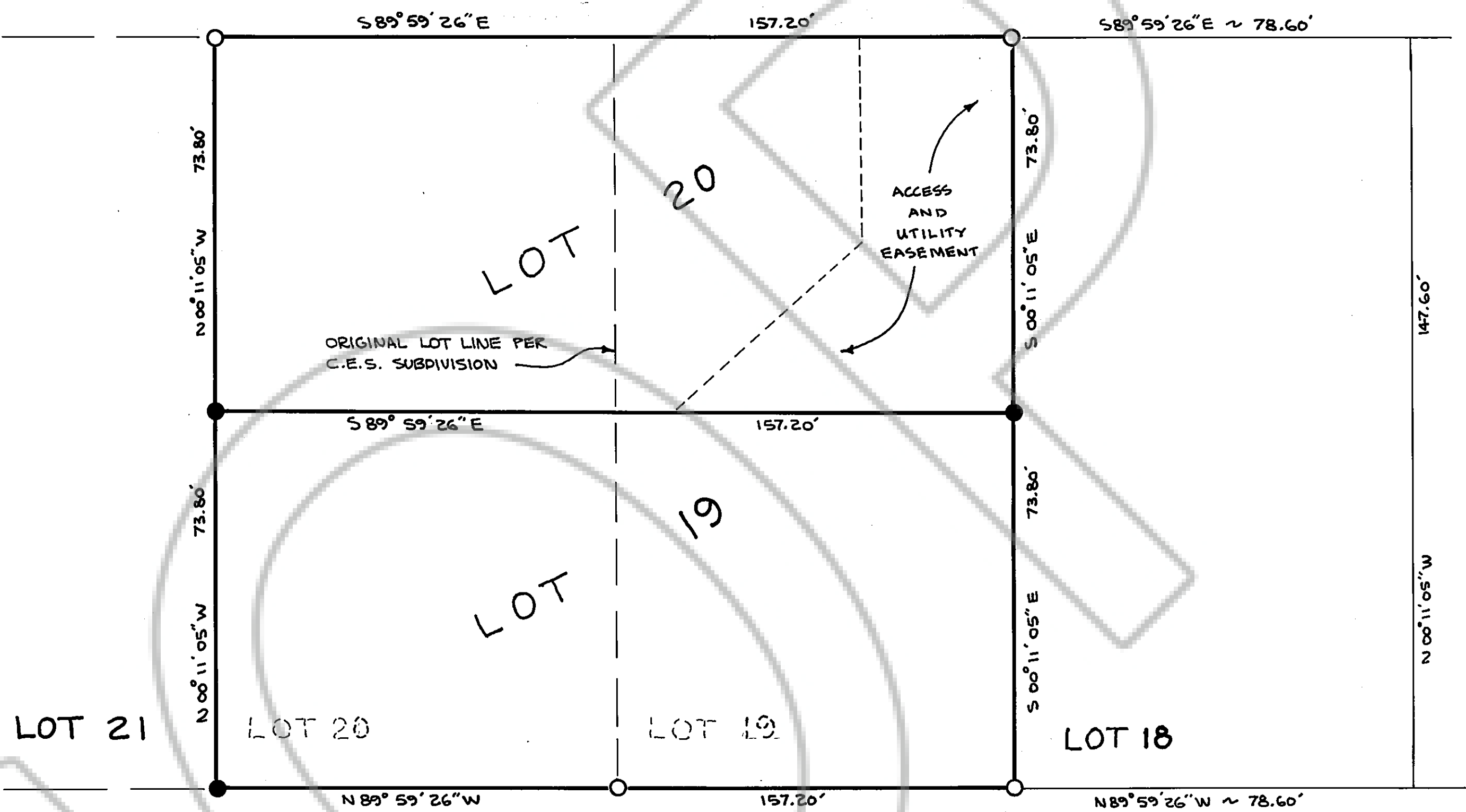


L A N G L E Y

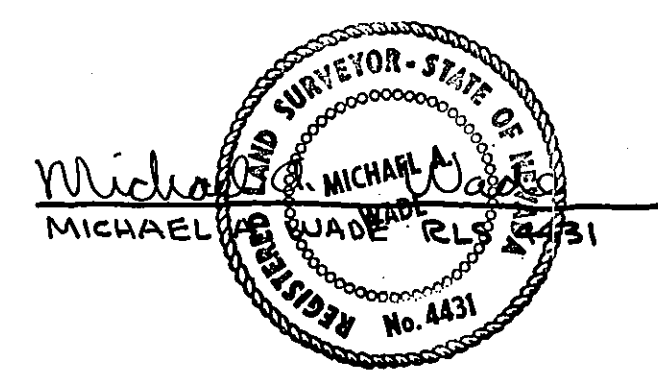
D R I V E



1" = 20'



**SURVEYOR'S CERTIFICATE:**  
 I, MICHAEL A. WADE, A REGISTERED LAND SURVEYOR IN THE STATE OF NEVADA, CERTIFY THAT: THIS IS A TRUE AND ACCURATE REPRESENTATION OF THE LANDS SURVEYED UNDER MY SUPERVISION AT THE INSTANCE OF GIL ROBERTS; THE LANDS SURVEYED LIE WITHIN SECTION 16 OF TOWNSHIP 12 NORTH, RANGE 20 EAST, M.D.B. & M., AND THE SURVEY WAS COMPLETED ON MAY 4, 1984; THIS PLAT COMPLIES WITH THE APPLICABLE STATE STATUTES AND ANY LOCAL ORDINANCES; AND, THE MONUMENTS ARE OF THE CHARACTER SHOWN AND OCCUPY THE POSITIONS INDICATED.



**RECORDER'S CERTIFICATE:**  
 FILED FOR RECORD THIS 2<sup>ND</sup> DAY OF JULY, 1984, AT 29 MINUTES PAST FOUR O'CLOCK P.M., IN BOOK 584 OF OFFICIAL RECORDS, AT PAGE 314; DOCUMENT NUMBER 100377 RECORDED AT THE REQUEST OF GIL ROBERTS.

*Paul J. Swift (Deputy)*  
 DOUGLAS COUNTY RECORDER

**NOTE:** THIS RECORD OF SURVEY REFLECTS THE BOUNDARY LINE ADJUSTMENT OF CALVIN E. SWIFT TRUST AS RECORDED IN BOOK 584 AT PAGE 150 OF THE OFFICIAL RECORDS OF DOUGLAS COUNTY, AS DOCUMENT NO. 100281.

- LEGEND:**
- - SET 5/8" REBAR W/ RLS 4431 TAG
  - - FOUND 5/8" REBAR W/ PLASTIC CAP STAMPED H & V ENGR - RLS 2161

**BASIS OF BEARINGS:**  
 C.E.S. SUBDIVISION, DOCUMENT NO. 45876, RECORDED JULY, 1980 IN BOOK 780, PAGE 100, OFFICIAL RECORDS, DOUGLAS COUNTY, NEVADA.

RECORD OF SURVEY  
 FOR  
 CALVIN E. SWIFT TRUST  
 REFLECTING LOT LINE ADJUSTMENT OF LINE THAT IS COMMON TO LOTS 19 & 20 OF C.E.S. SUBDIVISION  
 A PORTION OF SECTION 16, T12N, R20E, M. D. B. & M. NEVADA  
 DOUGLAS COUNTY

CONSULTING ENGINEERING SERVICES, INC.  
 P.O. BOX 1989 MINDEN, NEVADA 89423  
 (702) 265-3899