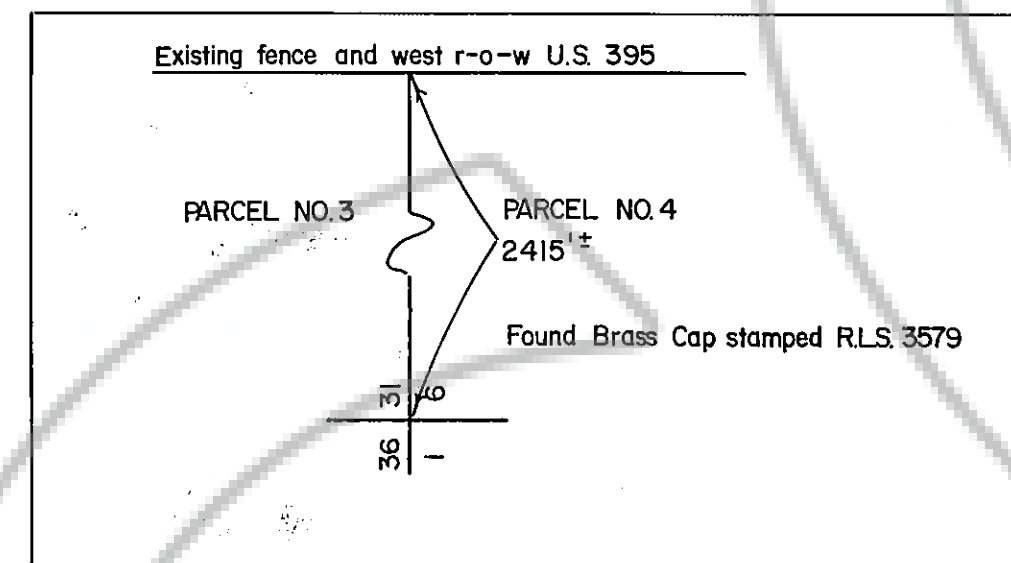
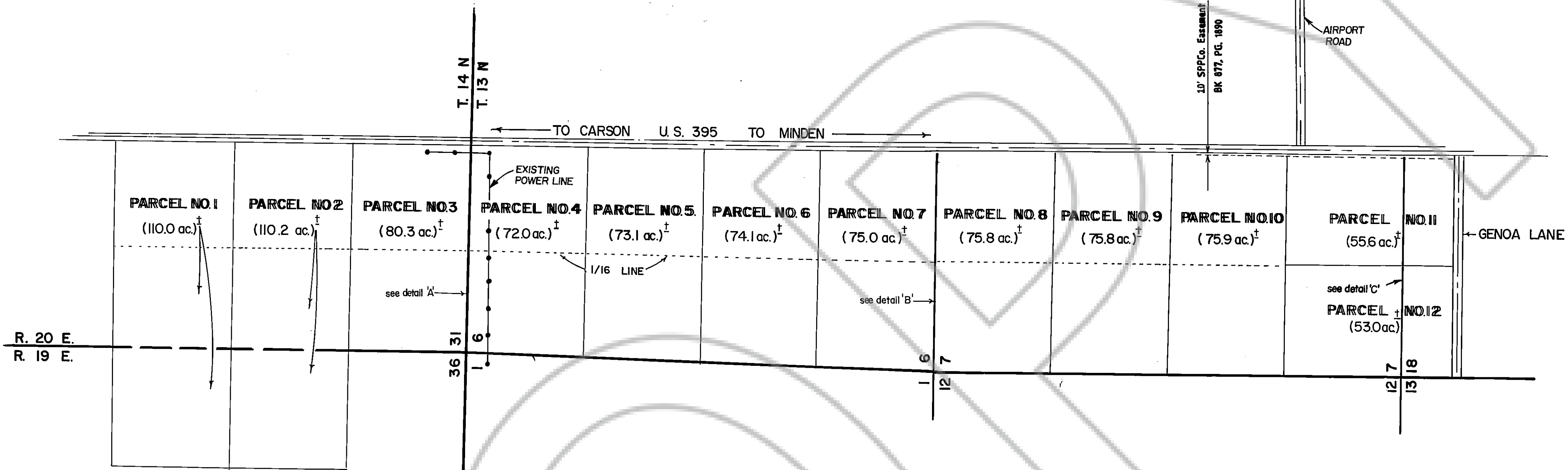
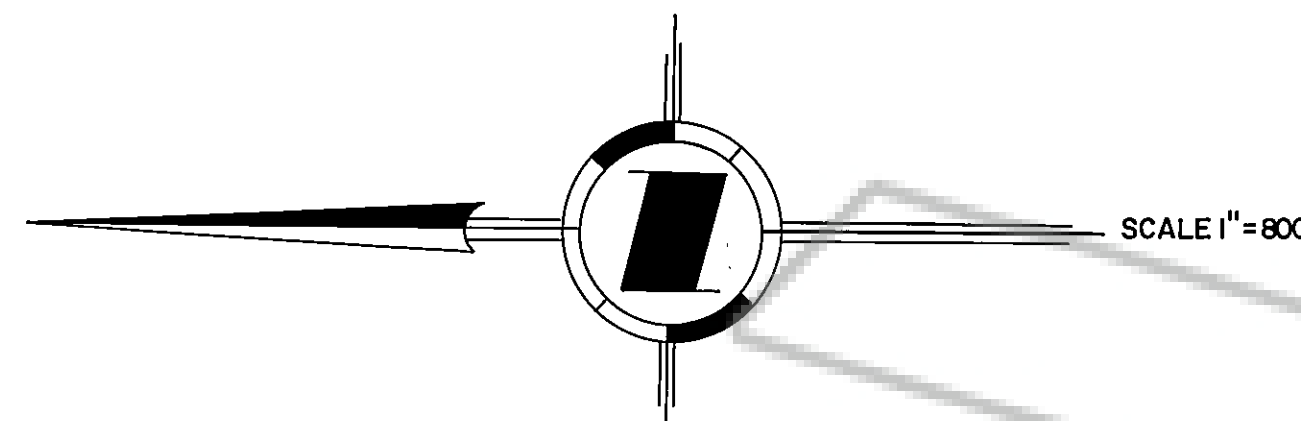
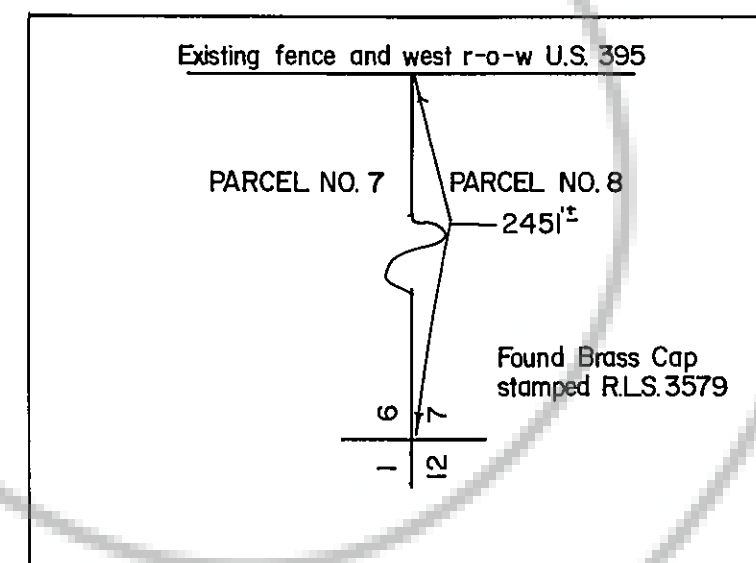


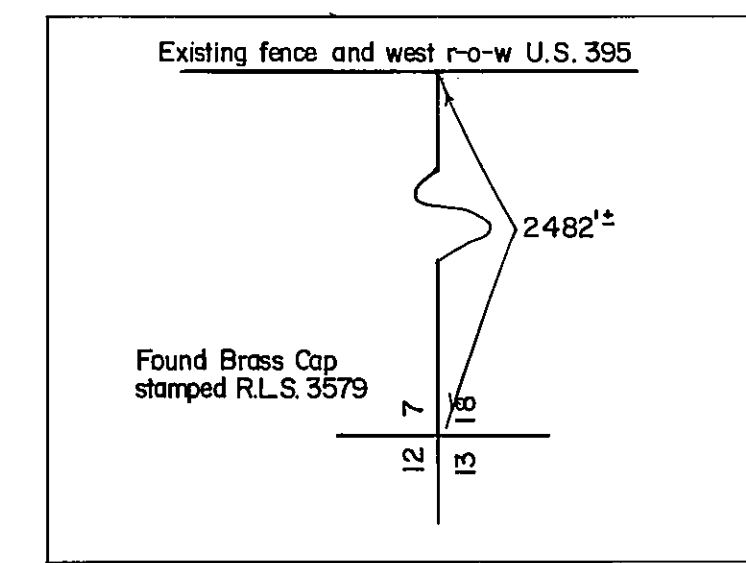
PARCEL NO.	DESCRIPTION (PER U.S.G.S. SURVEY DATED 1861.)
1	SE1/4 NW1/4, SW1/4 NW1/4, SEC. 31 T14N R20E. and SE1/4 NE1/4, SEC. 36 T. 14 N. R. 19 E.
2	NE1/4 SW1/4, NW1/4 SW1/4, SEC. 31 T14N R20E. and NE1/4 SE1/4, SEC. 36 T. 14 N. R. 19 E.
3	SE1/4 SW1/4, SW1/4 SW1/4, SEC. 31 T14N R20E.
4	NE1/4 NW1/4, NW1/4 NW1/4, SEC. 6 T. 13 N. R. 20E.
5	SE1/4 NW1/4, SW1/4 NW1/4, SEC. 6 T. 13 N. R. 20E.
6	NE1/4 SW1/4, NW1/4 SW1/4, SEC. 6 T. 13 N. R. 20E.
7	SE1/4 SW1/4, SW1/4 SW1/4, SEC. 6 T. 13 N. R. 20E.
8	NE1/4 NW1/4, NW1/4 NW1/4, SEC. 7 T. 13 N. R. 20E.
9	SE1/4 NW1/4, SW1/4 NW1/4, SEC. 7 T. 13 N. R. 20E.
10	NE1/4 SW1/4, NW1/4 SW1/4, SEC. 7 T. 13 N. R. 20E.
11	SE1/4 SW1/4, SEC. 7 and that portion of the E1/2 of the W1/2 of SEC. 18 T. 13 N. R. 20E. WEST of U.S. 395 and NORTH of GENOA LANE.
12	SW1/4 SW1/4, SEC. 7 and that portion of the W1/2 of the W1/2 of SEC. 18 T. 13 N. R. 20E. WEST of U.S. 395 and NORTH of GENOA LANE.



DETAIL 'A' no scale



DETAIL 'B' no scale



DETAIL 'C' no scale

NOTE:
1. 7.5' Utility Easement on all Road Frontages and 5.0' Utility Easement on all Side and Rear Lot Lines.

VASEY ENGINEERING CO., INC.
 Post Office Box 1164 • Minden, Nevada 89423
 702/782-2382 • 782-5642 • 882-5417
 Date APRIL 85 Drawn By MB
 Job No. M-699 Approved By B.J.V.

OWNERS CERTIFICATE
 THIS IS TO CERTIFY THAT THE UNDERSIGNED, ARNOLD SETTELMAYER, PRESIDENT OF SETTELMAYER RANCHES INC. IS THE LEGAL OWNER OF THIS PARCEL, AND DO HEREBY GRANT PERMANENT EASEMENTS FOR UTILITY INSTALLATION, DRAINAGE, AND PUBLIC RIGHT-OF-WAY AS DESIGNATED ON THIS MAP:
Arnold Settelmeier
 ARNOLD SETTELMAYER
 PRESIDENT OF SETTELMAYER RANCHES INC.

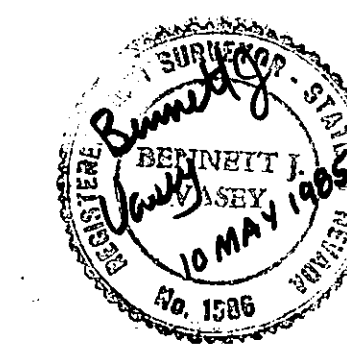
STATE OF NEVADA
 COUNTY OF DOUGLAS } ss
 ON THE 13 DAY OF May, 1985, PERSONALLY APPEARED BEFORE ME A NOTARY PUBLIC, ARNOLD SETTELMAYER, KNOWN BY ME TO BE THE PRESIDENT OF SETTELMAYER RANCHES INC., WHO ACKNOWLEDGED THAT HE EXECUTED THE ABOVE INSTRUMENT ON BEHALF OF SAID SETTELMAYER RANCHES INC.

Gloria K. Lash
 GLORIA K. LASH
 Notary Public Nevada
 Douglas County
 My Appointment Expires Jul. 7, 1985
 Notary Public

PLANNING COMMISSION CERTIFICATE
 I, LAUNA MARTIN, SECRETARY TO THE DOUGLAS COUNTY PLANNING COMMISSION, DO HEREBY CERTIFY THAT THIS MAP OF DIVISION OF LAND INTO LARGE PARCELS WAS APPROVED AND ACCEPTED ON THIS 27 DAY OF June, 1985 BY THE AFORESAID COMMISSION.
Launa Martin 9/25/85
 LAUNA MARTIN - SECRETARY

COUNTY CLERK'S CERTIFICATE
 I, YVONNE BERNARD, DOUGLAS COUNTY CLERK, DO HEREBY CERTIFY THAT THIS MAP WAS PRESENTED BEFORE THE BOARD OF COUNTY COMMISSIONERS ON THE 18th DAY OF July, 1985.
Yvonne Bernard 8/26/85
 YVONNE BERNARD - DOUGLAS COUNTY CLERK
John J. ...

SURVEYOR'S CERTIFICATE
 I, B.J. VASEY, A REGISTERED LAND SURVEYOR IN THE STATE OF NEVADA, CERTIFY:
 1. THIS MAP WAS PREPARED FROM DEEDS, RECORD INFORMATION ON FILE AT THE DOUGLAS COUNTY RECORDER, AT THE INSTANCE OF SETTELMAYER RANCHES INC.
 2. THE LANDS SHOWN LIES WITHIN A PORTION OF SECTIONS 6, 7, 18 T. 13 N. R. 20 E. AND SECTION 31 T. 14 N. R. 20 E. & SECTION 36 T. 14 N. R. 19 E. AND THE SURVEY WAS COMPLETED ON MAY 10, 1985.
 3. THIS MAP COMPLIES WITH THE APPLICABLE STATE STATUTES AND ANY LOCAL ORDINANCES AND THE PARCELS CONTAIN THE ACREAGE SHOWN.
B.J. Vasey
 B.J. VASEY R.L.S. 1586



RECORDER'S CERTIFICATE
 FILED FOR RECORD AT THE REQUEST OF *Settelmeier Ranches Inc.* ON THIS 26 DAY OF Aug. 1985 AT 2:11 MINUTES PAST 1 O'CLOCK P.M. OFFICIAL RECORDS OF DOUGLAS COUNTY, NEVADA. DOCUMENT NO. 122119 BOOK 225 PAGE 2632.
Suzanne Beaudreau
 DOUGLAS COUNTY RECORDER

DIVISION OF LAND INTO LARGE PARCELS
 FOR
 SETTELMAYER RANCHES, INC.
 LOCATED IN PORTIONS OF
 SEC. 36, T. 14 N. R. 19 E., SEC. 31 T. 14 N. R. 20 E., SEC. 6, 7, 18 T. 13 N. R. 20 E.
 M.D.B. & M.
 DOUGLAS COUNTY, NEVADA