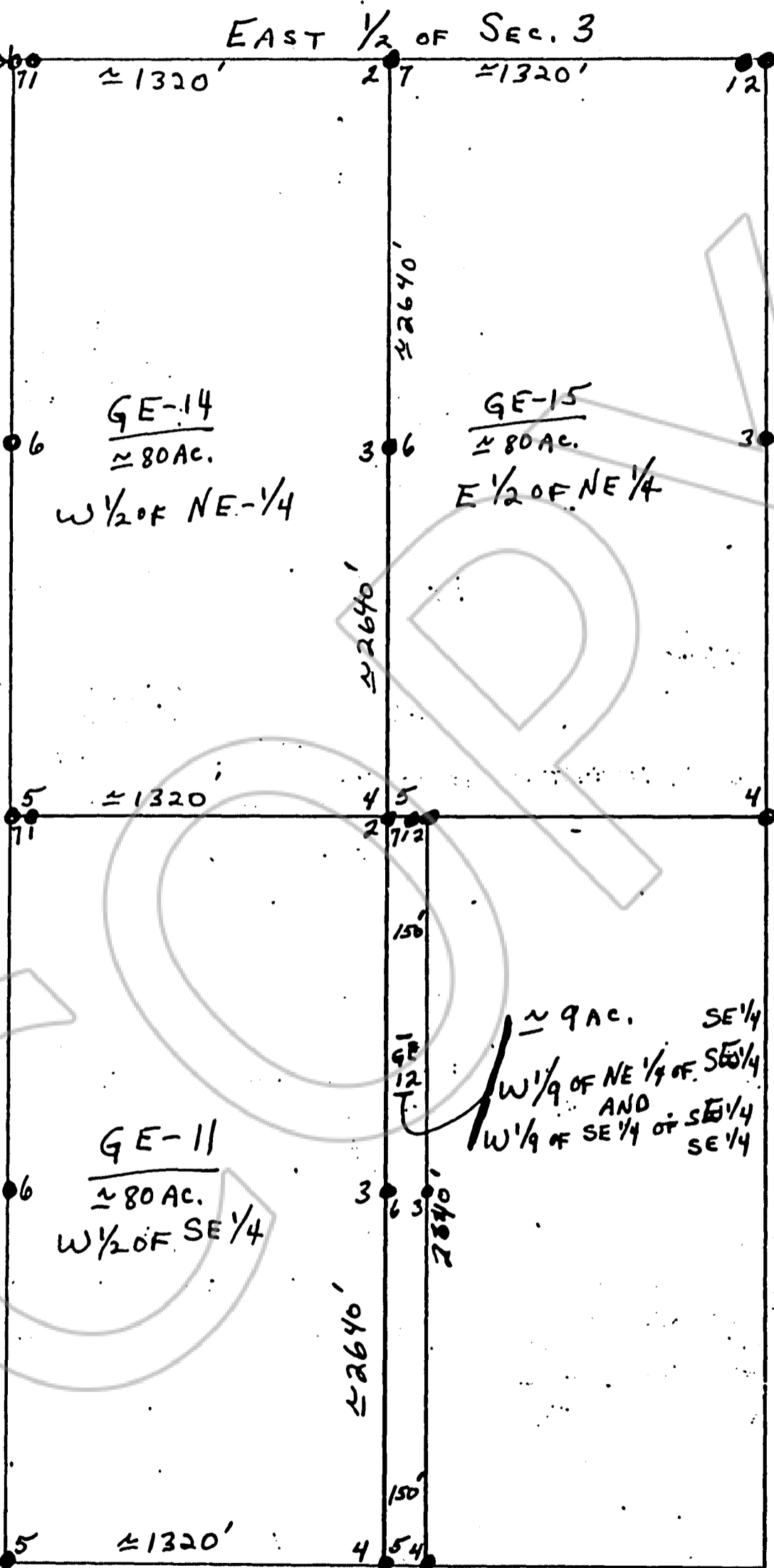


MAP OF GE SERIES OF PLACER CLAIMS

THE NAME OF THIS CLAIM IS GE-14



33/34
4/3



1" = 500'

⊗ = USGS BRASSCAP

CLAIM POSTS ARE PVC PIPE AT LEAST 3" IN DIA., AT LEAST 4' LONG WITH TAGS ATTACHED OF ALUMINUM, INSCRIBED.

MON.

- 1 = LOC. MON.
- 2 = NE COR.
- 3 = E. CNTR
- 4 = SE COR.
- 5 = SW COR.
- 6 = W. CNTR.
- 7 = NW COR.

GE-11
≈ 80 AC.
W 1/2 OF SE 1/4

≈ 9 AC. SE 1/4
W 1/9 OF NE 1/4 OF SE 1/4
AND
W 1/9 OF SE 1/4 OF SE 1/4

SEC. 3 T12N R21E M.D. DIABLO B&M DOUGLAS CO., NEV.

GARDNERVILLE (EAGLE) MINING DISTRICT - PARTIALLY SURVEYED & PROTRAC.

LOC. JAN. 8, 1988 BY MAYNARD C. CAMPBELL & ASSOC.

170544

COPY

REQUESTED BY
M. Campbell
IN OFFICIAL RECORDS OF
ALBERTA CANADA

'88 JAN -8 P3:21

SUZANNE DEAUDREAU
RECORDER

800 Bk DEPUTY

170544

800 **188** PAGE **1098**