

OWNER'S CERTIFICATE

THIS IS TO CERTIFY THAT THE UNDERSIGNED, GREGORY W. AND HOLLIS LYNN PAINTER AND JERRY L. AND ANNA M. BLADES, ARE THE LEGAL OWNERS OF THIS PARCEL AND DO HEREBY GRANT PERMANENT EASEMENTS FOR UTILITY INSTALLATION, DRAINAGE, AND PUBLIC ROAD RIGHT-OF-WAY AS DESIGNATED ON THIS MAP.

Gregory W. Painter
GREGORY W. PAINTER
Hollis Lynn Painter
HOLLIS LYNN PAINTER
Jerry L. Blades
JERRY L. BLADES
Anna M. Blades
ANNA M. BLADES

COUNTY OF DOUGLAS S.S.
STATE OF NEVADA

ON THIS 3 DAY OF April 1988, GREGORY W. AND HOLLIS LYNN PAINTER AND JERRY L. AND ANNA M. BLADES DID PERSONALLY APPEAR BEFORE ME, A NOTARY PUBLIC, AND EXECUTED THE ABOVE INSTRUMENT.

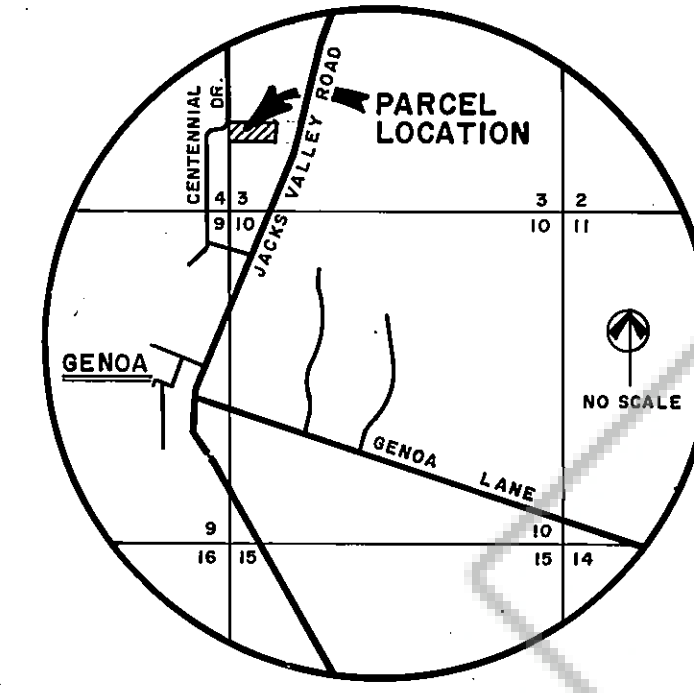
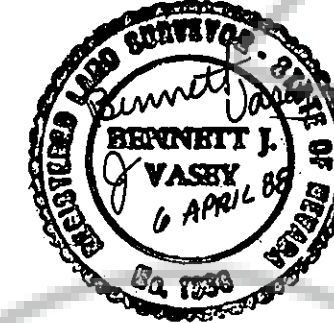
Gloria K. Lash
NOTARY PUBLIC



SURVEYOR'S CERTIFICATE

I, B. J. VASEY, A REGISTERED LAND SURVEYOR IN THE STATE OF NEVADA CERTIFY:
1) THIS MAP WAS PREPARED FROM DEEDS, RECORD INFORMATION ON FILE AT DOUGLAS COUNTY RECORDER, AT THE INSTANCE OF GREGORY W. AND HOLLIS LYNN PAINTER AND JERRY L. AND ANNA M. BLADES.
2) THE LAND SHOWN LIES WITHIN THE W1/2 SW1/4 SECTION 3, T.13N., R.19E., M.D.B. & M. AND THE SURVEY WAS COMPLETED ON MARCH 08, 1988.
3) THIS MAP COMPLIES WITH THE APPLICABLE STATE STATUTES AND LOCAL ORDINANCES.
4) THE MONUMENTS ARE OF THE CHARACTER SHOWN AND OCCUPY THE POSITIONS INDICATED.

B. J. Vasey
B. J. VASEY R.L.S. 1586



CHIEF PLANNING OFFICIAL

I, JOHN RENZ, CHIEF PLANNING OFFICIAL, DO HEREBY CERTIFY THAT I HAVE EXAMINED THIS MAP, AND THAT IT IS IN SUBSTANTIAL CONFORMANCE WITH ALL APPLICABLE PROVISIONS OF STATE STATUTES AND COUNTY CODES.

John Renz 4-12-88
JOHN RENZ
CHIEF PLANNING OFFICIAL

COUNTY ENGINEER'S CERTIFICATE

I, MARK V. GONZALES, DOUGLAS COUNTY ENGINEER, DO HEREBY CERTIFY THAT I HAVE EXAMINED THIS MAP AND APPROPRIATE FINANCIAL SECURITY HAS BEEN POSTED WITH THE COUNTY TO INSURE THE COMPLETION OF ALL PHYSICAL IMPROVEMENTS AS REQUIRED BY THE PARCEL MAP REGULATIONS, AND I AM SATISFIED THAT THIS MAP IS TECHNICALLY CORRECT.

Mark V. Gonzales 4-12-88
MARK V. GONZALES
DOUGLAS COUNTY ENGINEER

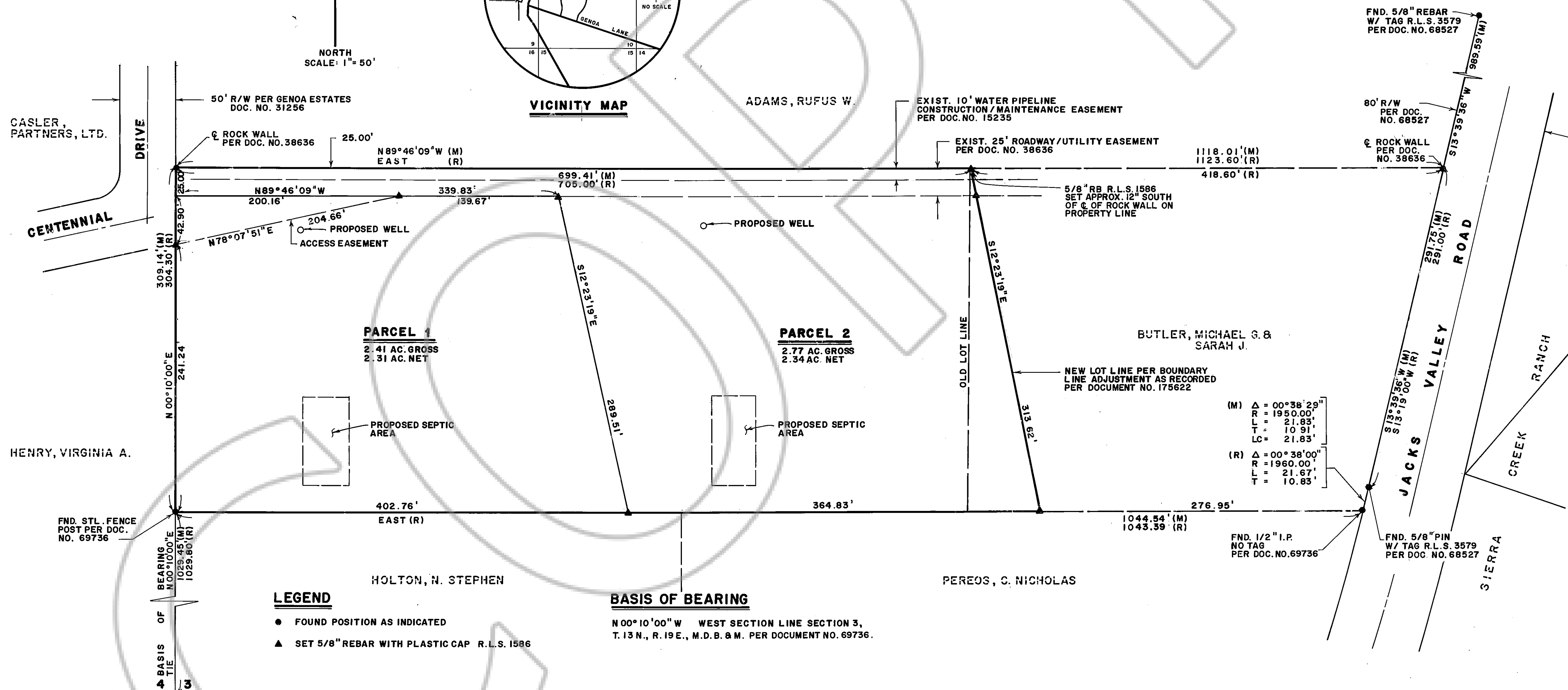
TITLE CERTIFICATE

THIS IS TO CERTIFY THAT GREGORY W. AND HOLLIS LYNN PAINTER AND JERRY L. AND ANNA M. BLADES ARE THE ONLY PARTIES HAVING RECORD INTEREST IN THE TRACTS OF LAND EMBRACED WITHIN THE GRAPHIC BORDER SHOWN ON THIS PLAT. THERE ARE LIENS AND/OR MORTGAGE HOLDERS OF RECORD. 2 DEEDS OF TRUSTS BOTH IN FAVOR OF MICHAEL G. AND SARAH J. BUTLER R.L.S. 1586 DATED 2-4-88 IN BOOK 283 PAGES 312 AND 313. Original Costa Vice Pres. Trust Nevada Title Co.

COUNTY CLERK'S CERTIFICATE

I, BARBARA REED, DOUGLAS COUNTY CLERK, DO HEREBY CERTIFY THAT THIS MAP WAS PRESENTED BEFORE THE BOARD OF COUNTY COMMISSIONERS ON THE 2nd DAY OF April 1988 AND WAS APPROVED AND ACCEPTED.

Barbara Reed
BARBARA REED
DOUGLAS COUNTY CLERK



LEGEND

- FOUND POSITION AS INDICATED
- ▲ SET 5/8" REBAR WITH PLASTIC CAP R.L.S. 1586

NOTES

- TOTAL ACREAGE: 5.18 ACRES
ACCESS EASEMENT 0.53 ACRES
NET ACREAGE 4.65 ACRES
- A 7.5' PUBLIC UTILITY EASEMENT SHALL EXIST ALONG ALL ROAD FRONTS. A 5' PUBLIC UTILITY EASEMENT SHALL EXIST ALONG ALL SIDE AND REAR LOT LINES.
- ANY FURTHER DIVISION OF THESE PARCELS MAY BE SUBJECT TO SUBDIVISION IMPROVEMENTS AS PROVIDED UNDER N.R.S. 278.462(3).

UTILITY COMPANIES' CERTIFICATE

WE, THE UNDERSIGNED COMPANIES, HEREBY ACCEPT AND APPROVE THE PUBLIC UTILITY EASEMENTS AS SHOWN ON THIS PLAT. THIS APPROVAL DOES NOT GUARANTEE ACCESSIBILITY FOR SERVICE.

Sierra Pacific Power Company 3-11-88
SIERRA PACIFIC POWER COMPANY
Continental Telephone Company 3-18-88
CONTINENTAL TELEPHONE COMPANY

RECORDER'S CERTIFICATE

FILED FOR RECORD THIS 13th DAY OF April 1988
AT 04 MINUTES PAST 4 O'CLOCK P.M. IN
BOOK 488, PAGE 1311, DOCUMENT NO.
176047, IN THE OFFICIAL RECORDS OF DOUGLAS COUNTY,
NEVADA. RECORDED AT THE REQUEST OF GREGORY W. AND HOLLIS
LYNN PAINTER AND JERRY L. AND ANNA M. BLADES.
Erin Pedovich Deputy
DOUGLAS COUNTY RECORDER

PARCEL MAP
FOR
GREGORY AND HOLLIS PAINTER
AND
JERRY AND ANNA BLADES
LOCATED IN THE W1/2 SW 1/4 OF
SECTION 3, T.13N., R.19E., M.D.B. & M.
DOUGLAS COUNTY, NEVADA

VASEY ENGINEERING CO., INC.
Post Office Box 1164 • Minden, Nevada 89423
702/782-2382 • 782-5642 • 882-5417
Date 03-88 Drawn By LMB
Job No. M-972 Approved By _____