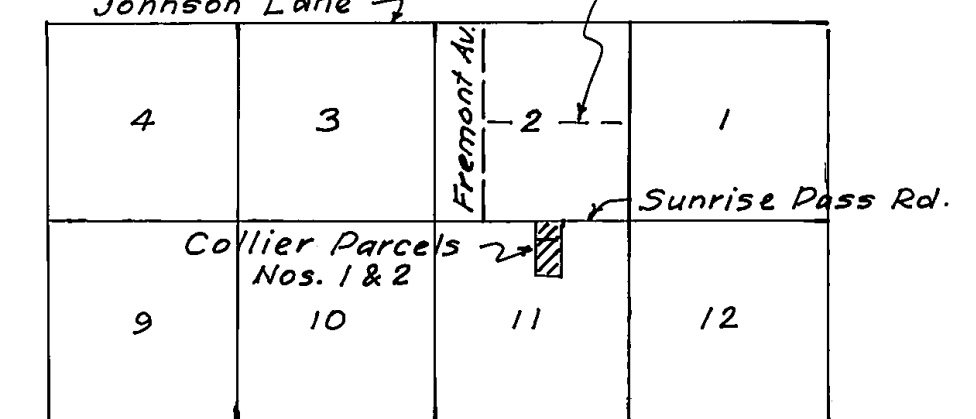
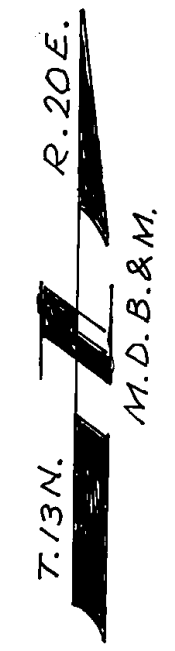


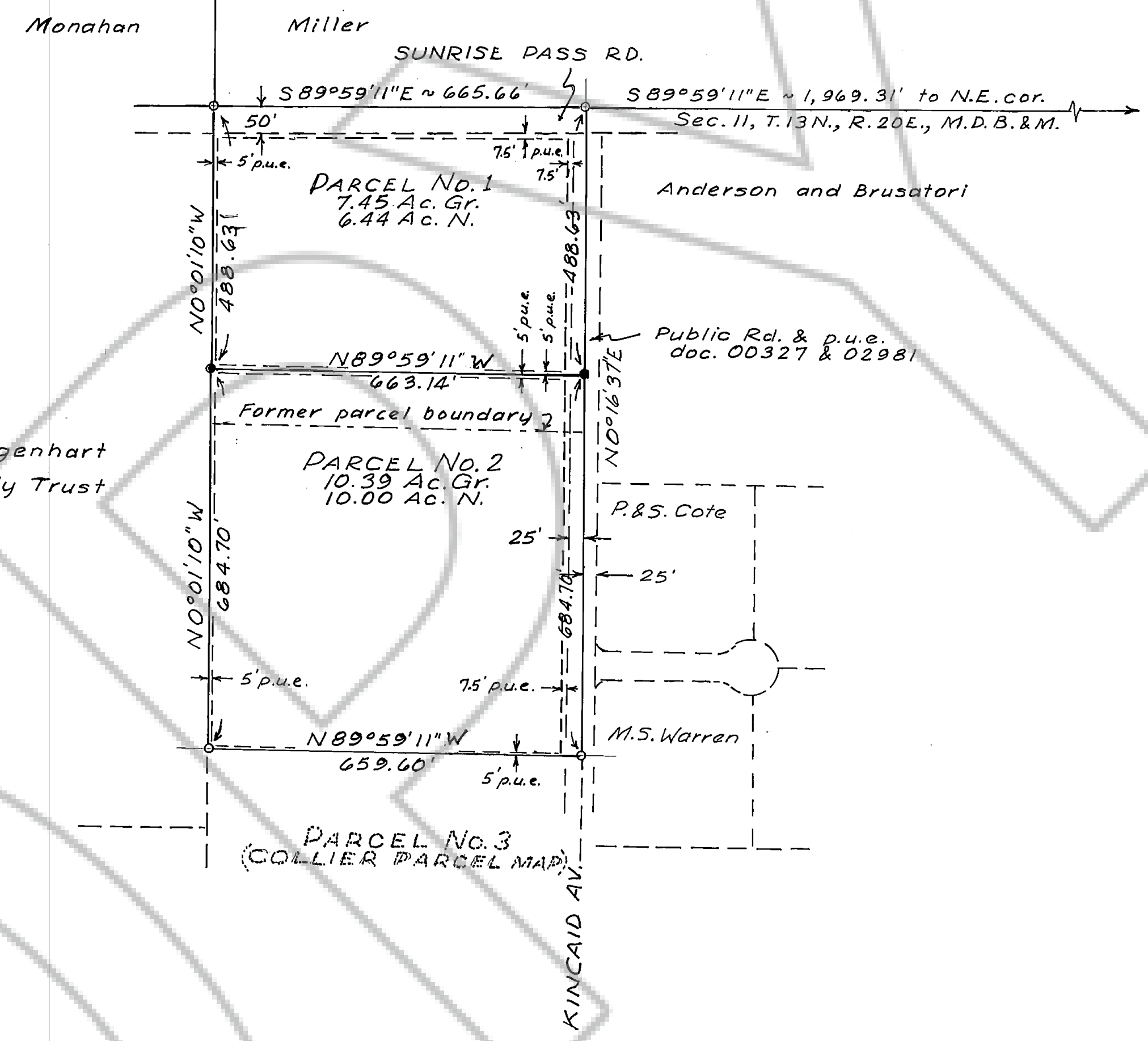
So. line Pioneer Hgts. Subd.
Basis of Bearing ~ N 89° 58' E



VICINITY MAP
1" = 1 mile



SCALE: 1" = 200'



LEGEND

- FOUND 5/8" REBAR TAGGED "R.L.S. 446"
- SET " " " " " "

BASIS OF BEARING:

SOUTH LINE OF PIONEER HEIGHTS
SUBDIVISION: "N 89° 58' E"

NOTES:

THIS MAP WAS PREPARED FROM
DOC. NO. 193135, PARCEL MAP FOR
ROY & MARY COLLIER, ADJUSTING
THE BOUNDARY BETWEEN PARCELS
NO. 1 AND NO. 2 AS SHOWN.

FURTHER DIVISION OF THESE PARCELS
WILL REQUIRE DEVELOPMENT TO SUB-
DIVISION STANDARDS AS STATED IN
NRS 278.462 (3).

SURVEYOR'S CERTIFICATE

I, R.C. DOWNER, A REGISTERED LAND SURVEYOR IN THE STATE
OF NEVADA, CERTIFY THAT:
(1) THIS IS A TRUE AND ACCURATE REPRESENTATION OF THE
LANDS SURVEYED UNDER MY SUPERVISION AT THE INSTANCE
OF LARRY D. GRIM.
(2) THE LAND SHOWN LIES WITHIN THE NW 1/4 NE 1/4 OF SEC. 11, T. 13N.,
R. 20E., M.D.B. & M., AND THE SURVEY WAS COMPLETED ON FEB. 3, 1989.
(3) THIS MAP COMPLIES WITH THE APPLICABLE STATE STATUTES
AND LOCAL ORDINANCES.
(4) THE MONUMENTS ARE OF THE CHARACTER SHOWN AND OCCUPY
THE LOCATIONS INDICATED.

Robert C. Downer
R.C. DOWNER R.L.S. 446



RECORDER'S CERTIFICATE:

FILED FOR RECORD THIS 22 DAY OF
February, 1989, AT 27 MINUTES PAST
12 O'CLOCK P.M. IN BOOK 289
PAGE 2335, DOCUMENT NO. 196699
IN THE OFFICIAL RECORDS OF DOUGLAS
COUNTY, NEVADA, AT THE REQUEST OF
LARRY D. GRIM.

Suzanne Beaudreau By *Paula Kennedy*
DOUGLAS COUNTY RECORDER
(deputy)

RECORD OF SURVEY
TO ACCOMPANY LOT LINE ADJUSTMENTS
LARRY D. AND GWYN N. GRIM
LOCATED WITHIN THE NW 1/4, NE 1/4
OF SEC. 11, T. 13N., R. 20E., M.D.B. & M.
DOUGLAS COUNTY, NV.