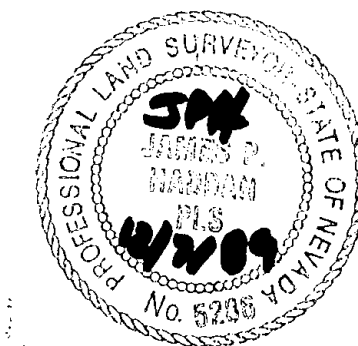


**SURVEYOR'S CERTIFICATE:**

I, JAMES P. HADDAN, A PROFESSIONAL LAND SURVEYOR IN THE STATE OF NEVADA, CERTIFY THAT THIS IS A TRUE AND ACCURATE REPRESENTATION OF THE LANDS SURVEYED UNDER MY SUPERVISION AT THE INSTANCE OF DON A. AND ELEANOR E. LEVASSEUR, THE LANDS SURVEYED LIE WITHIN SECTION 34, TOWNSHIP 14 NORTH, RANGE 20 EAST, M.D.B.M., AND THE SURVEY WAS COMPLETED ON NOVEMBER 27, 1989; THIS PLAT COMPLIES WITH THE APPLICABLE STATE STATUTES AND LOCAL ORDINANCES, AND THE MONUMENTS ARE OF THE CHARACTER SHOWN AND OCCUPY THE POSITIONS INDICATED.

*James P. Haddan* 12-7-89  
 JAMES P. HADDAN, P.L.S. 5286 DATE



**NOTE:**

(1) THE PURPOSE OF THIS MAP IS TO REFLECT LOT LINE ADJUSTMENT BETWEEN PARCELS 2A, 2B, 2C & 2D OF PARCEL MAP RECORDED AS DOCUMENT NO. 211196 IN THE DOUGLAS COUNTY RECORDER'S OFFICE.

**BASIS OF BEARINGS:**

THE NORTH LINE OF THE NW 1/4 SECTION 34, T. 14 N., R. 20 E., M.D.B.M., AS SHOWN ON PARCEL MAP RECORDED AS DOCUMENT NO. 28899 IN THE OFFICIAL RECORDS OF THE DOUGLAS COUNTY RECORDER IN 89° 57' E)

**LEGEND:**

- INDICATES FOUND STREET MONUMENT IN WELL
- SET 5/8" REBAR WITH PLASTIC CAP NO 5286
- FOUND IRON PIN AS DESCRIBED

**RECORDER'S CERTIFICATE:**

FILED FOR RECORD THIS 24th DAY OF December 19 89, AT 17 MINUTES PAST 12 O'CLOCK P.M. IN BOOK 1283 OF OFFICIAL RECORDS, AT PAGE 272, DOCUMENT NO. 216190 RECORDED AT THE REQUEST OF DON A. AND ELEANOR E. LEVASSEUR.

*Camela Kronenberg, Deputy*  
 DOUGLAS COUNTY RECORDER

TOTAL AREA = 5.00 ACRES

**RECORD OF SURVEY FOR**

**DON A. AND ELEANOR E. LEVASSEUR**

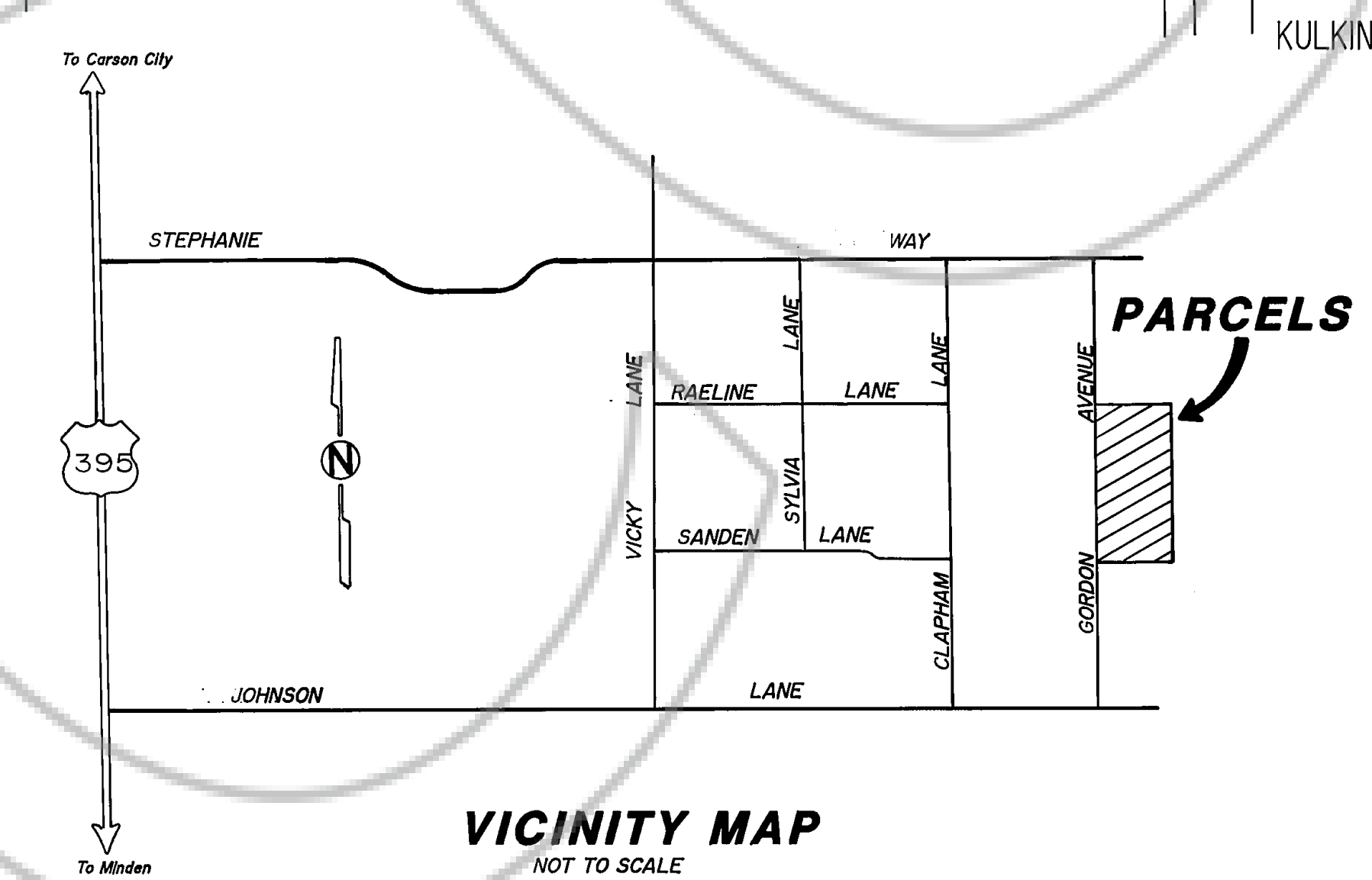
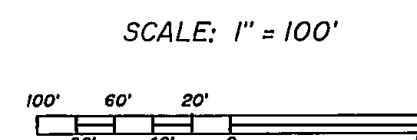
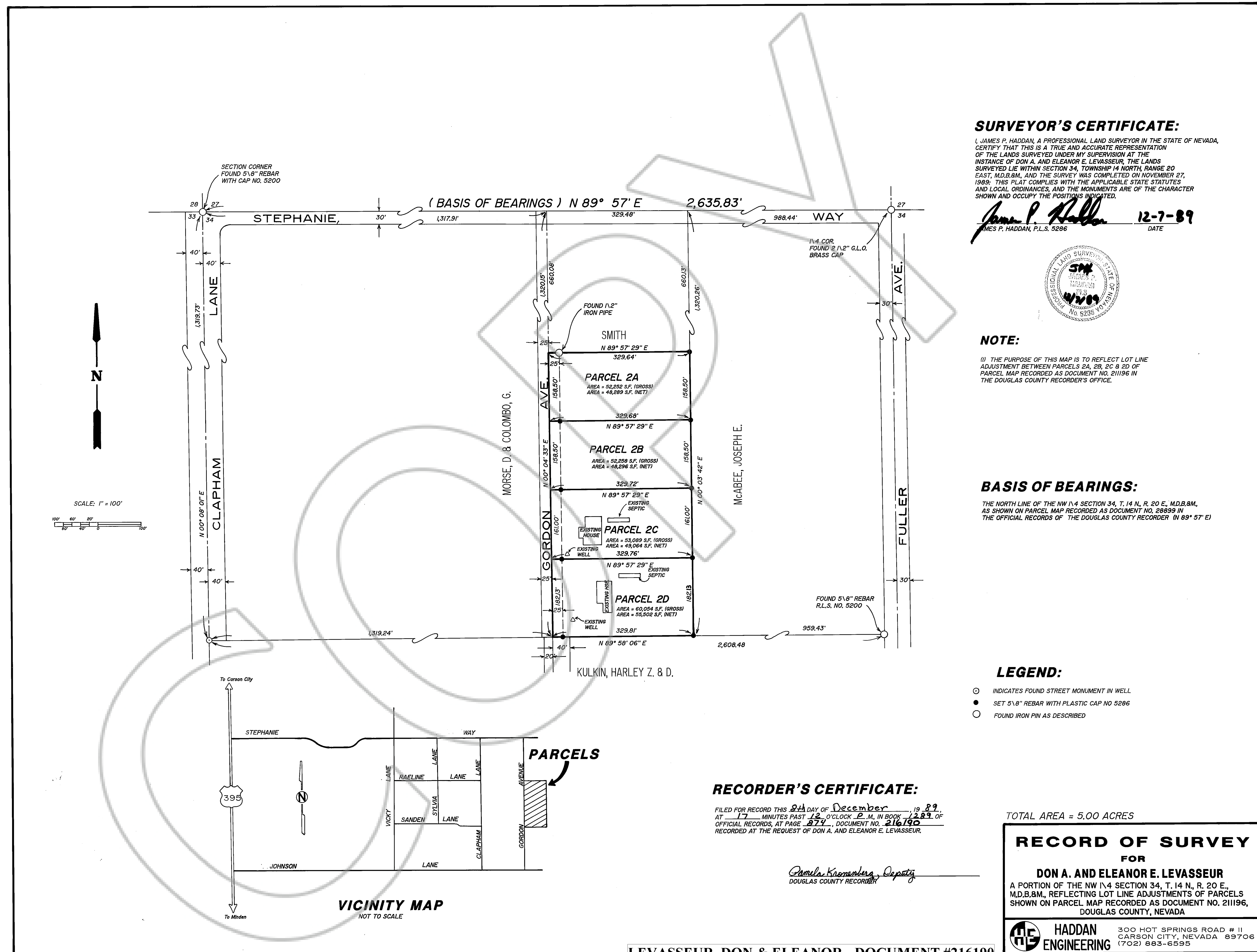
A PORTION OF THE NW 1/4 SECTION 34, T. 14 N., R. 20 E., M.D.B.M., REFLECTING LOT LINE ADJUSTMENTS OF PARCELS SHOWN ON PARCEL MAP RECORDED AS DOCUMENT NO. 211196, DOUGLAS COUNTY, NEVADA



**HADDAN ENGINEERING**  
 300 HOT SPRINGS ROAD # 11  
 CARSON CITY, NEVADA 89706  
 (702) 883-6595

LEVASSEUR, DON & ELEANOR - DOCUMENT #216190

34-14-20 Levasseur doc 216190



**VICINITY MAP**  
 NOT TO SCALE