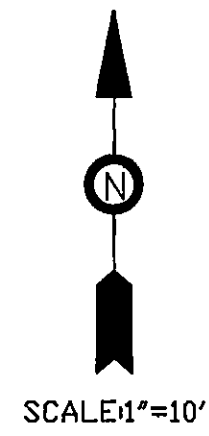
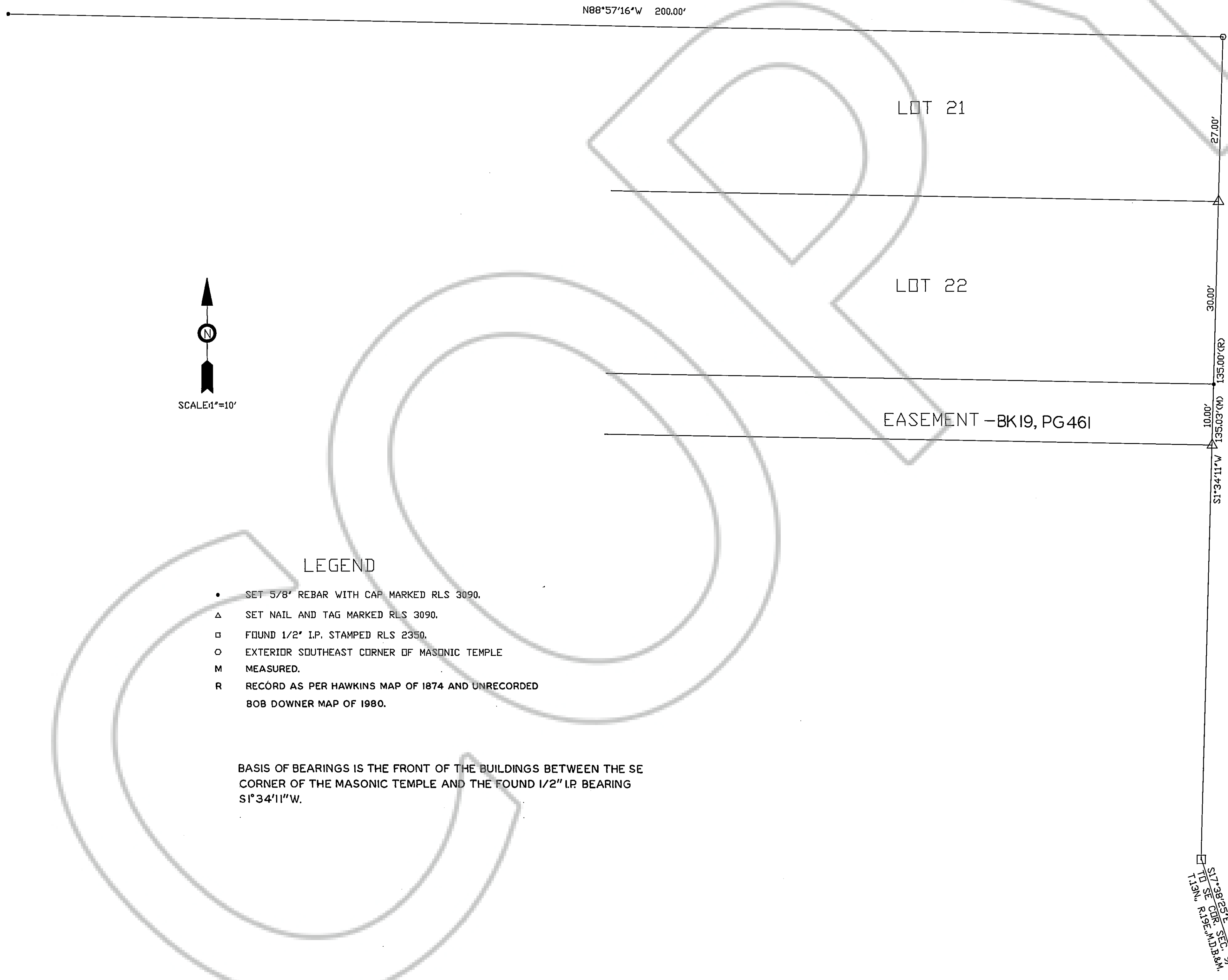


VICINITY MAP  
NOT TO SCALE



LEGEND

- SET 5/8" REBAR WITH CAP MARKED RLS 3090.
- △ SET NAIL AND TAG MARKED RLS 3090.
- FOUND 1/2" I.P. STAMPED RLS 2350.
- EXTERIOR SOUTHEAST CORNER OF MASONIC TEMPLE
- M MEASURED.
- R RECORD AS PER HAWKINS MAP OF 1874 AND UNRECORDED BOB DOWNER MAP OF 1980.

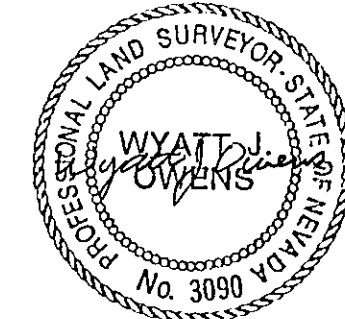
BASIS OF BEARINGS IS THE FRONT OF THE BUILDINGS BETWEEN THE SE CORNER OF THE MASONIC TEMPLE AND THE FOUND 1/2" I.P. BEARING S1°34'11"W.

SURVEYOR'S CERTIFICATE

I, WYATT J. OWENS, A REGISTERED LAND SURVEYOR IN THE STATE OF NEVADA CERTIFY THAT:

1. THIS IS A TRUE AND ACCURATE REPRESENTATION OF THE LANDS SURVEYED UNDER MY SUPERVISION AT THE INSTANCE OF RONALD BOMMARITO.
2. THE LAND SHOWN LIES WITHIN SECTION(S) 9 OF T.13 N., R.19 E., M.D.B.&M. AND THE SURVEY WAS COMPLETED ON FEBRUARY 2, 1990.
3. THIS MAP COMPLIES WITH THE APPLICABLE STATE STATUTES AND LOCAL ORDINANCES.
4. THE MONUMENTS ARE OF THE CHARACTER SHOWN AND OCCUPY THE POSITIONS INDICATED.

*Wyatt J. Owens*  
WYATT J. OWENS, RLS 3090



RECORDER'S CERTIFICATE

FILED FOR RECORD THIS 20th DAY OF February, 1990 AT 12 MINUTES PAST 3 O'CLOCK P.M. IN BOOK 292, PAGE 2145, DOCUMENT #220421 IN THE OFFICIAL RECORDS OF Douglas COUNTY, NEVADA AT THE REQUEST OF WYATT J. OWENS.

Suzanne Beaudreau BY *Amelia Krenenberg*  
COUNTY RECORDER DEPUTY

RECORD OF SURVEY  
FOR  
RONALD DEAN BOMMARITO  
WITHIN SECTION 9, T.13 N., R. 19 E., M.D.B.&M.  
DOUGLAS COUNTY, NEVADA