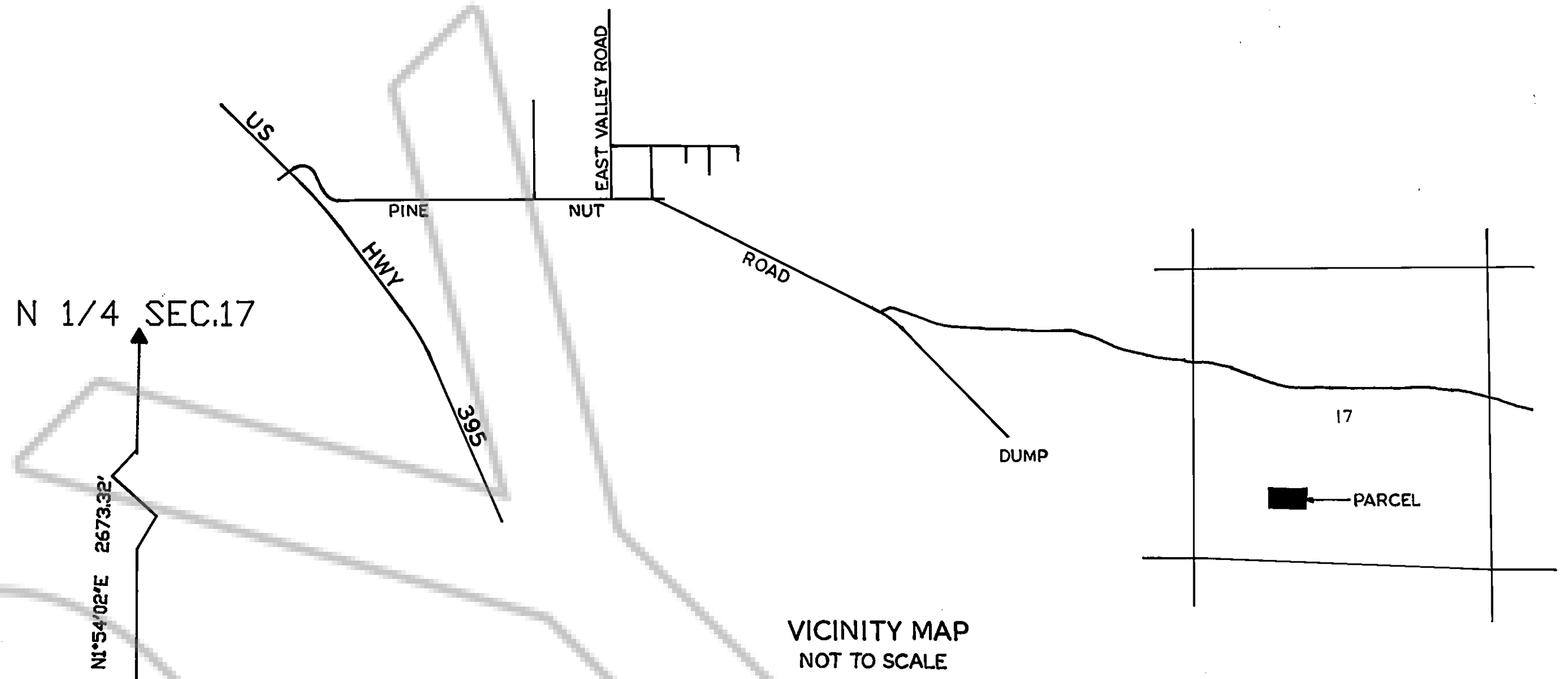
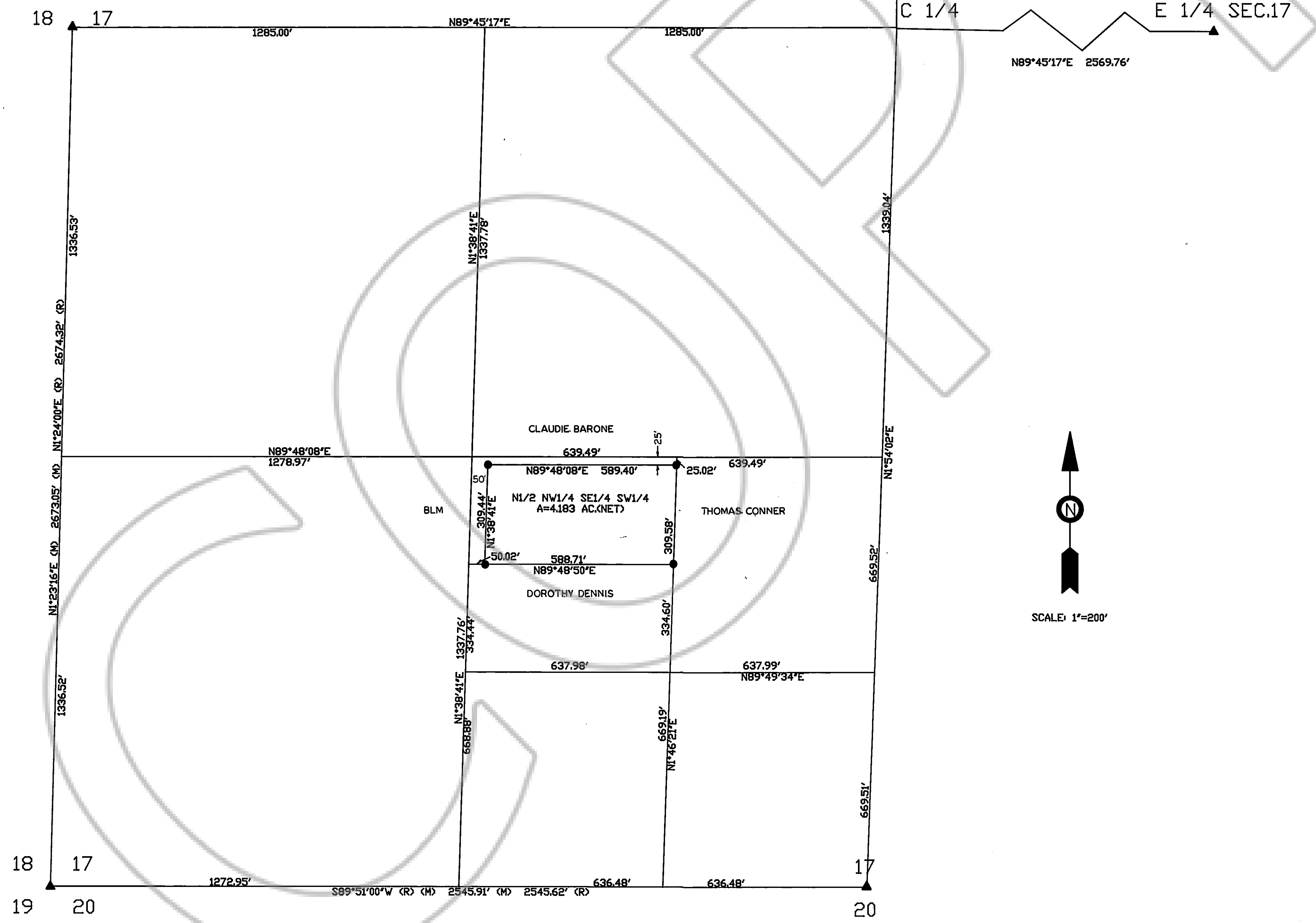


- LEGEND**
- SET 5/8" REBAR WITH CAP MARKED RLS 3090.
 - ▲ FOUND BLM BRASS CAP (1973).
 - (R) RECORD AS PER BLM SURVEY OF 1973.
 - (M) MEASURED

BASIS OF BEARINGS IS THE SOUTH LINE OF THE SECTION WHICH BEARS S89°51'00"W AS PER RECORD MAP DOCUMENT #199060, RECORDED IN BOOK 389, PAGE 3832.

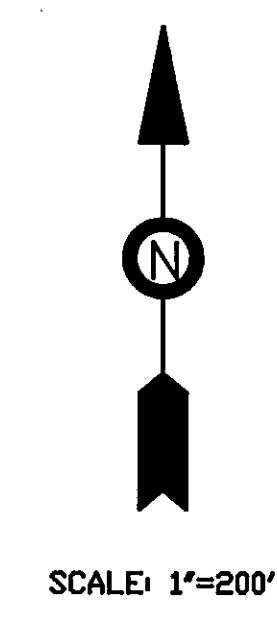


SURVEYOR'S CERTIFICATE

I, WYATT J. OWENS, A PROFESSIONAL LAND SURVEYOR IN THE STATE OF NEVADA CERTIFY THAT:

1. THIS IS A TRUE AND ACCURATE REPRESENTATION OF THE LANDS SURVEYED UNDER MY SUPERVISION AT THE INSTANCE OF THOMAS NELSON.
2. THE LAND SHOWN LIES WITHIN SECTION(S) 17 OF T.12N., R.21E., M.D.B.&M. AND THE SURVEY WAS COMPLETED ON APRIL 7, 1990.
3. THIS MAP COMPLIES WITH THE APPLICABLE STATE STATUTES AND LOCAL ORDINANCES.
4. THE MONUMENTS ARE OF THE CHARACTER SHOWN AND OCCUPY THE POSITIONS INDICATED.

Wyatt J. Owens
WYATT J. OWENS, PLS 3090



RECORDER'S CERTIFICATE

FILED FOR RECORD THIS 11 DAY OF April 1990 AT 02 MINUTES PAST 11 O'CLOCK A.M. IN BOOK 190 PAGE 1288, DOCUMENT # 223659 IN THE OFFICIAL RECORDS OF Douglas County, NEVADA AT THE REQUEST OF WYATT J. OWENS.

S. Beaudreau COUNTY RECORDER BY *S. Davis* DEPUTY

RECORD OF SURVEY FOR THOMAS SIGURD NELSON WITHIN SECTION 17 T.12N., R.21E., M.D.B.&M. DOUGLAS COUNTY, NEVADA