

DRAWING NUMBER
Mountain View
Estates Unit 4
Lot 2
PLAN HOLD CORPORATION • IRVINE, CALIFORNIA
RECORDED BY NUMBER 0204A

DRAWING NUMBER
PLAN HOLD CORPORATION • IRVINE, CALIFORNIA
RECORDED BY NUMBER 0204A

DRAWING NUMBER
PLAN HOLD CORPORATION • IRVINE, CALIFORNIA
RECORDED BY NUMBER 0204A

DRAWING NUMBER
PLAN HOLD CORPORATION • IRVINE, CALIFORNIA
RECORDED BY NUMBER 0204A

FINAL MAP

MOUNTAIN VIEW ESTATES UNIT 4

LOCATED IN THE S 1/2 SW1/4 NW1/4 NW 1/4 SECTION 34,
T.14 N., R.20E., M.D.B. & M.

OWNER'S CERTIFICATE

KNOW ALL MEN BY THESE PRESENTS, THAT THE UNDERSIGNED, PHILIP V. CARTER, OWNERS OF RECORD TITLE INTEREST, HEREBY CONSENT TO THE PREPARATION AND RECORDING OF THIS MAP IN ACCORDANCE WITH AND FOR THE USES AND PURPOSES SET FORTH IN THE NEVADA REVISED STATUTES, CHAPTERS 116 AND 278 AND SUBSEQUENT AMENDMENTS THERETO, AND DOUGLAS COUNTY CODE 16, AND DOES HEREBY OFFER AND CONVEY FOR DEDICATION TO THE COUNTY OF DOUGLAS, STATE OF NEVADA, FOR THE USE OF THE PUBLIC THOSE PORTIONS OF SAID LANDS DESIGNATED ON THIS MAP AS PUBLIC WAYS AND DOES HEREBY OFFER AND DEDICATE FOR PARTICULAR PURPOSES THE RIGHT OF WAY AND EASEMENTS AS SHOWN FOR GAS, WATER SEWER, AND DRAINAGE PIPES, FOR POLES, ANCHORS AND GUYS FOR CONDUCTOR WIRE AND CONDUIT FOR ELECTRICAL AND TELEPHONE SERVICE TOGETHER WITH ANY AND ALL APPURTENANCES THERETO, ON, ACROSS, AND UNDER ALL LAND LYING OUTSIDE THE INDIVIDUAL SITES SHOWN HEREON.

STATE OF NEVADA SS Philip V. Carter
COUNTY OF DOUGLAS

ON THE 31 DAY OF FEB. 1990, PERSONALLY APPEARED BEFORE ME, A NOTARY PUBLIC, KNOWN BY ME TO BE PHILIP V. CARTER WHO ACKNOWLEDGED THAT HE EXECUTED THE ABOVE INSTRUMENT.

Carol Costa
NOTARY PUBLIC
CAROL COSTA
Notary Public - Nevada
Douglas County
My Appointment Expires Nov. 14, 1992

SURVEYOR'S CERTIFICATE

I, ALLEN A. ANDERSON, A PROFESSIONAL LAND SURVEYOR IN THE STATE OF NEVADA, CERTIFY THAT:
1) THIS IS A TRUE AND ACCURATE REPRESENTATION OF THE LANDS SURVEYED UNDER MY SUPERVISION AT THE INSTANCE OF PHILIP V. CARTER.

- 2) THE LANDS SURVEYED LIE WITHIN A PORTION OF SECTION 34, T.14 N., R.20E., M.D.B. & M., AND THE SURVEY WAS COMPLETED ON OR BEFORE SEPTEMBER 09, 1989.
- 3) THE PLAT COMPLIES WITH THE APPLICABLE STATE STATUTES AND ANY LOCAL ORDINANCES.
- 4) THE MONUMENTS ARE OF THE CHARACTER SHOWN AND OCCUPY THE POSITIONS INDICATED, BY SEPTEMBER 09, 1989, AND THAT AN APPROPRIATE LETTER OF CREDIT HAS BEEN POSTED WITH DOUGLAS COUNTY TO ASSURE THEIR INSTALLATION.

Allen A. Anderson
ALLEN A. ANDERSON FLS 7459
AAA SURVEYING

PLANNING COMMISSION CERTIFICATE

IT IS HEREBY CERTIFIED THAT THE ABOVE AND FOREGOING PLAT ENTITLED MOUNTAIN VIEW ESTATES UNIT 4, WAS PRESENT BEFORE THE DOUGLAS COUNTY PLANNING COMMISSION ON THE 30th DAY OF March, 1990, AND WAS DULY APPROVED. FURTHERMORE THE OFFER OF DEDICATION FOR ALL PUBLIC WAYS WAS REJECTED WITH THE RESERVATION TO ACCEPT SAID OFFER AT A LATER DATE.

Joan Patrick
JOAN PATRICK, CHAIRMAN

CHIEF PLANNING OFFICIAL

I, JOHN RENZ, CHIEF PLANNING OFFICIAL, DO HEREBY CERTIFY THAT I HAVE REVIEWED THIS MAP AND THAT IT IS IN SUBSTANTIAL COMPLIANCE WITH THE TENTATIVE MAP AS DENIED BY THE DOUGLAS COUNTY PLANNING COMMISSION ON THE 30th DAY OF March, 1989, AND WAS APPEALED TO THE DOUGLAS COUNTY BOARD OF COMMISSIONERS ON THE 20th DAY OF April, 1989, AND WAS APPROVED.

John Renz 4-13-90
JOHN RENZ DATE
CHIEF PLANNING OFFICIAL

COUNTY ENGINEER'S CERTIFICATE

I, MARK V. GONZALES, DOUGLAS COUNTY ENGINEER, DO HEREBY CERTIFY THAT I HAVE EXAMINED THIS FINAL MAP ENTITLED MOUNTAIN VIEW ESTATES UNIT 4, AND A LETTER OF CREDIT HAS BEEN PROVIDED TO INSURE THAT REQUIRED PUBLIC IMPROVEMENTS ARE MADE.

Mark V. Gonzales 4-12-90
MARK V. GONZALES DATE
DOUGLAS COUNTY ENGINEER

FIRE DEPARTMENT APPROVAL

THE FIREFIGHTING FACILITIES AND ACCESSES SHOWN ON THESE PLANS ARE HEREBY APPROVED BY THE EAST FORK FIRE PROTECTION DISTRICT.

Warren Gay 4-12-90
WARREN GAY DATE
DEPUTY FIRECHIEF/FIRE MARSHALL
EAST FORK FIRE PROTECTION DISTRICT

UTILITY COMPANIES' CERTIFICATE

THE EASEMENTS AS SHOWN ON THIS MAP, UNLESS OTHERWISE INDICATED, ARE UTILITY EASEMENTS TO BE USED FOR THE SPECIFIC PURPOSE OF ELECTRICAL, TELEPHONE AND GAS SERVICE AND ARE HEREBY CHECKED AND APPROVED. THIS APPROVAL DOES NOT GUARANTEE ACCESSIBILITY FOR SERVICE.

- Sierra Pacific Power Company 11-15-89
SIERRA PACIFIC POWER COMPANY DATE
- Continental Telephone Company 11-15-89
CONTINENTAL TELEPHONE COMPANY DATE
- Southwest Gas Company 11-16-89
SOUTHWEST GAS COMPANY DATE

COUNTY TAX COLLECTOR CERTIFICATE

I, BARBARA J. REED, DOUGLAS COUNTY CLERK TREASURER AND EX-OFFICIO TAX COLLECTOR, DO HEREBY CERTIFY THAT PHILIP CARTER HAS PAID TAXES CURRENT TO THIS DATE, AND THERE ARE NO DELINQUENT TAXES DUE ON THIS PROPERTY. ADV 21-160-14

Barbara J. Reed 4/13/90
BARBARA J. REED
DOUGLAS COUNTY CLERK TREASURER and
EX-OFFICIO TAX COLLECTOR

HEALTH DEPARTMENT APPROVAL

THIS FINAL MAP IS APPROVED BY THE DIVISION OF HEALTH OF THE DEPARTMENT OF HUMAN RESOURCES CONCERNING SEWAGE DISPOSAL, WATER POLLUTION, WATER QUALITY AND WATER SUPPLY FACILITIES IN ACCORDANCE WITH NEVADA REVISED STATUTES. THIS APPROVAL PREDICATED COMMUNITY WATER SUPPLY AND INDIVIDUAL SEWAGE DISPOSAL.

Jeffrey Fontaine 21 FEB 90
JEFFREY FONTAINE DATE
DIVISION OF HEALTH

DIVISION OF WATER RESOURCES APPROVAL

THIS FINAL MAP IS APPROVED BY THE DIVISION OF WATER RESOURCES OF THE DEPARTMENT OF CONSERVATION AND NATURAL RESOURCES CONCERNING WATER QUANTITY SUBJECT TO THE REVIEW OF APPROVAL ON FILE IN THIS OFFICE.

Keith Becci 12 JAN 90
KEITH BECCI DATE
DIVISION OF WATER RESOURCES

TITLE CERTIFICATE

IS TO CERTIFY THAT PHILIP V. CARTER IS THE ONLY PARTY HAVING RECORD INTEREST IN THE TRACTS OF LAND SHOWN WITHIN THE GRAPHIC BORDER SHOWN ON THIS PLAT. THE FOLLOWING IS A COMPLETE LIST OF LIENS AND/OR MORTGAGE HOLDERS OF RECORD. WILLIAM KOLSTAD, RECORDED IN BOOK 1089, AT PAGE 4257, DOUGLAS COUNTY RECORDS.

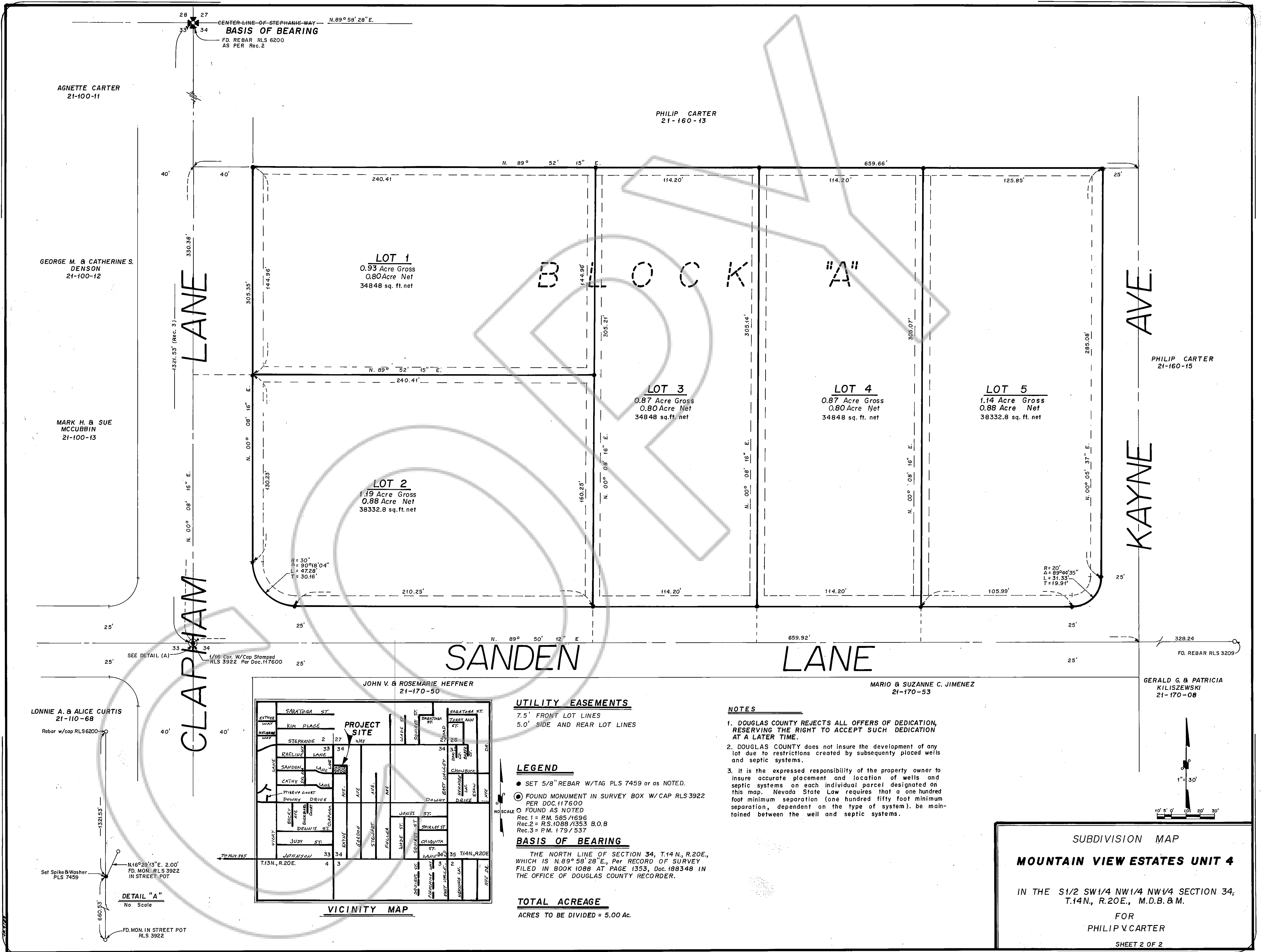
Carol Costa
FIRST NEVADA TITLE Co. CAROL COSTA
VICE PRES

RECORDER'S CERTIFICATE

FILED FOR RECORD THIS 13th DAY OF April 1990 AT 53 MINUTES PAST 2 O'CLOCK P. M., IN BOOK 490 OF OFFICIAL RECORDS, AT PAGE 1894, DOCUMENT NO. 223927 RECORDED AT THE REQUEST OF PHILIP V. CARTER.

Pamela Kraenbergh Deputy
DOUGLAS COUNTY RECORDER

SUBDIVISION MAP
MOUNTAIN VIEW ESTATES UNIT 4
IN THE S1/2 SW1/4 NW1/4 NW1/4 SECTION 34,
T.14N., R.20E., M.D.B. & M.
FOR
PHILIP V. CARTER
SHEET 1 OF 2



SUBDIVISION MAP
MOUNTAIN VIEW ESTATES UNIT 4
 IN THE S1/2 SW1/4 NW1/4 NW1/4 SECTION 34,
 T.14N, R.20E., M.D.B. & M.
 FOR
 PHILIP V. CARTER
 SHEET 2 OF 2