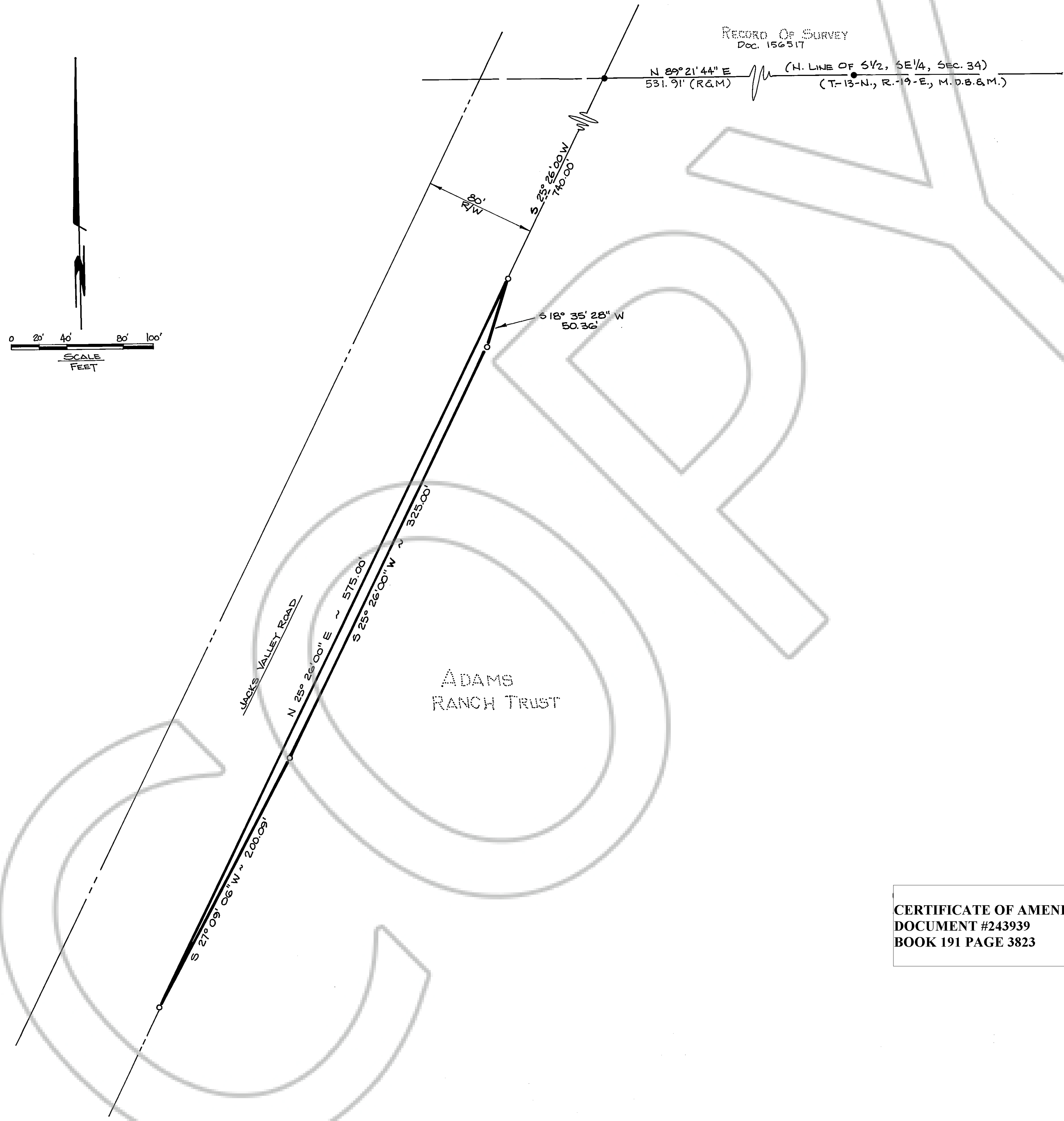


RECORD OF SURVEY
Doc. 156517
N 89° 21' 44" E 531.91' (R&M) (N. LINE OF S 1/2, SE 1/4, SEC. 34)
(T-13-N., R-19-E., M.D.B.&M.)



LEGEND

- FOUND 5/8" REBAR AND ALUMINUM CAP R.L.S. 3579.
- SET 5/8" PIN AND CAP P.L.S. 2351.

BASIS OF BEARING

THE NORTH LINE OF S 1/2, SE 1/4 OF SECTION 34, T-13-N., R-19-E., M.D.B.&M.; DOCUMENT NO. 156517.

SURVEYOR'S CERTIFICATE

- I, WILLIAM F. HENDRICKS A PROFESSIONAL LAND SURVEYOR IN THE STATE OF NEVADA CERTIFY THAT:
1. THIS IS A TRUE AND ACCURATE REPRESENTATION OF THE LANDS SURVEYED UNDER MY SUPERVISION AT THE INSTANCE OF DOUGLAS COUNTY.
 2. THE LANDS SURVEYED LIE WITHIN SECTION 34, T-13-N., R-19-E., M.D.B.&M. IN NEVADA AND THE SURVEY WAS COMPLETED ON MAY 2, 1990.
 3. THIS PLAT COMPLIES WITH THE APPLICABLE STATE STATUTES AND ANY LOCAL ORDINANCES.
 4. THE MONUMENTS ARE OF THE CHARACTER SHOWN AND WILL OCCUPY THE POSITIONS INDICATED.

William F. Hendricks
WILLIAM F. HENDRICKS
LAND SURVEYOR
No. 2351
2357

RECORDER'S CERTIFICATE

FILED FOR RECORD THIS 12th DAY OF June, 1990 AT 14 MINUTES PAST 4 O'CLOCK P.M. IN BOOK 690, OF OFFICIAL RECORDS, AT PAGE 1649, DOCUMENT NO. 227991, RECORDED AT THE REQUEST OF DOUGLAS COUNTY.

CERTIFICATE OF AMENDMENT
DOCUMENT #243939
BOOK 191 PAGE 3823

Kathy Lu Jordan Deputy
DOUGLAS COUNTY RECORDER

RECORD OF SURVEY #22 FOR DOUGLAS COUNTY LOCATED WITHIN SECTION 34, T-13-N., R-19-E., M.D.B.&M.		
PREPARED BY: WILLIAM F. HENDRICKS, P.L.S. LAND SURVEYORS P.O. BOX 5745 SPARKS, NEVADA 89432 PHONE 702-359-2552		
SCALE: 1" = 40'	DATE: MAY 7, 1990	SHEET: 1 OF 1
DRAWN BY: B. DUC		