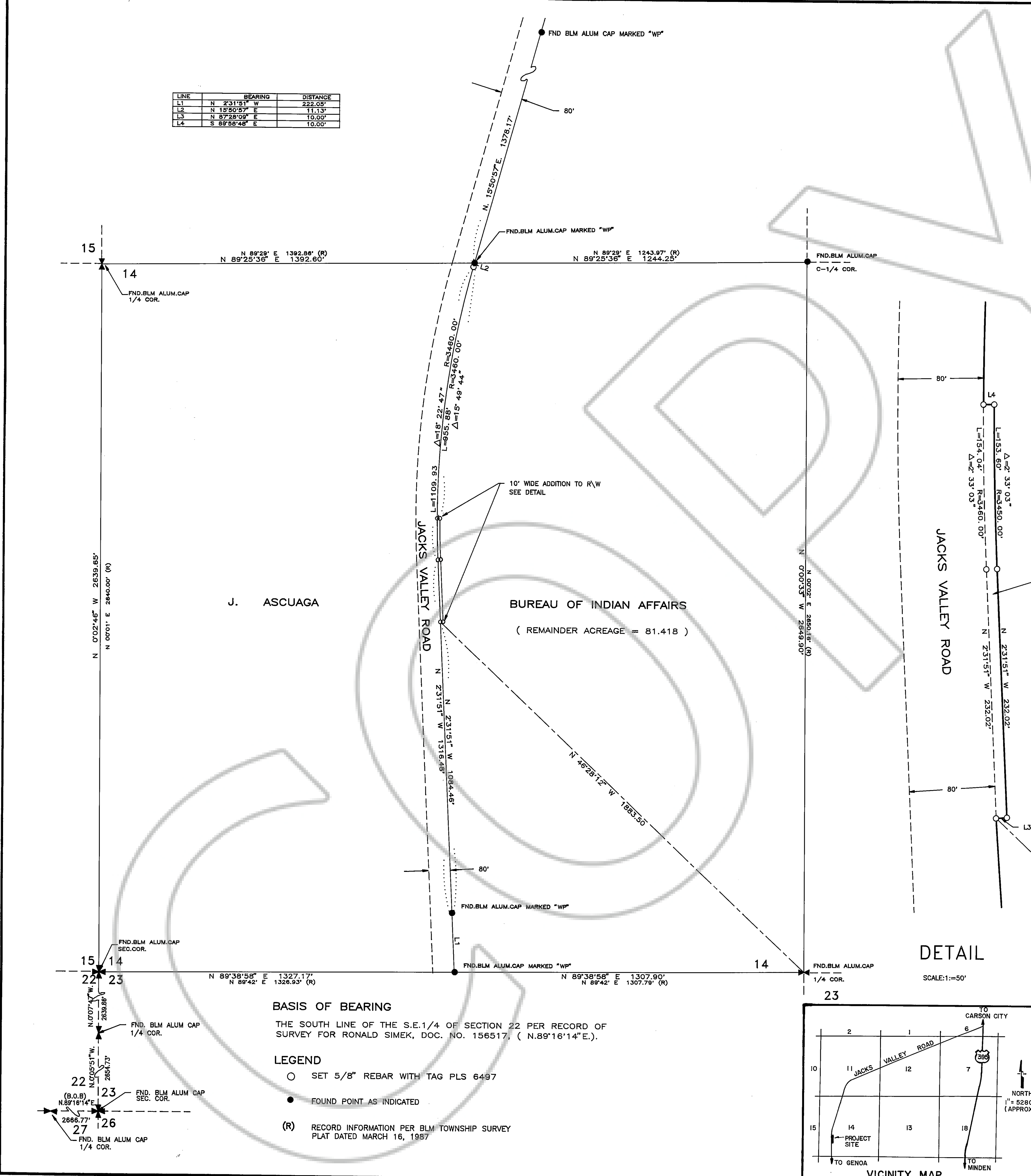


LINE	BEARING	DISTANCE
L1	N 231°15' W	222.00'
L2	N 15°50'57" E	11.13'
L3	N 87°28'09" E	10.00'
L4	S 89°58'45" E	10.00'



### SURVEYOR'S CERTIFICATE

I, DARRYL M. HARRIS, A PROFESSIONAL LAND SURVEYOR IN THE STATE OF NEVADA, CERTIFY THAT:

- THIS IS A TRUE AND ACCURATE REPRESENTATION OF THE LANDS SURVEYED UNDER MY SUPERVISION AT THE INSTANCE OF DOUGLAS COUNTY.
- THE LANDS SURVEYED LIE WITHIN THE SW 1/4 OF SECTION 14, T.14 N. R.19 E., M.D.B. & M. AND THE SURVEY WAS COMPLETED ON OCTOBER 31, 1990.
- THIS PLAT COMPLIES WITH THE APPLICABLE STATE STATUTES AND ANY LOCAL ORDINANCES.
- THE MONUMENTS ARE OF THE CHARACTER SHOWN AND OCCUPY THE POSITIONS INDICATED.

*Darryl M. Harris*  
 DARRYL M. HARRIS  
 PROFESSIONAL LAND SURVEYOR NO. 6497

### RECORDER'S CERTIFICATE

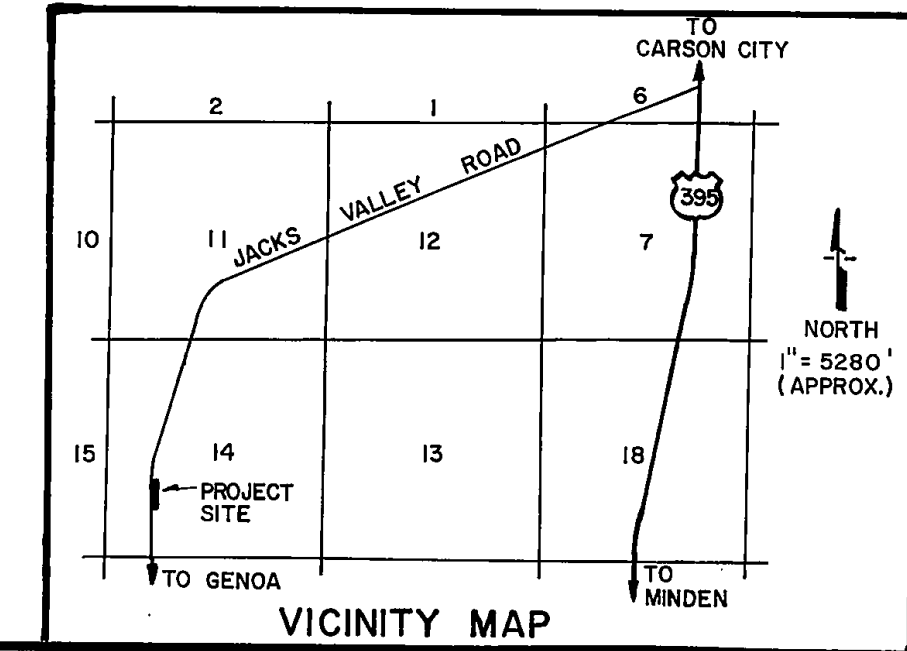
FILED FOR RECORD THIS 28th DAY OF January, 1991 AT 19 MINUTES PAST 9 O'CLOCK A. M. IN BOOK 191 OF THE OFFICIAL RECORDS, PAGE 3314, DOCUMENT NO. 243666. RECORDED AT THE REQUEST OF DOUGLAS COUNTY.

*Kathy Lee Jordan* - Deputy  
 DOUGLAS COUNTY RECORDER

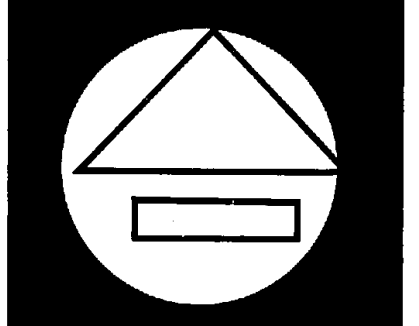
Certificate of Amendment  
 Recorded 2/12/91  
 Doc # 244733  
 Book 291 Page 1265

### DETAIL

SCALE: 1"=50'



RECORD OF SURVEY #24 FOR  
**DOUGLAS COUNTY**  
 LOCATED WITHIN THE SW 1/4 SEC. 14, T.14 N., R.19 E., M.D.B. & M. DOUGLAS COUNTY, NEVADA



**NORTH**

Scale 1"=200'

**RESOURCE CONCEPTS INC.**  
 340 North Minnesota Street, Carson City, Nevada 89701  
 (702) 883 - 1600  
**ENGINEERING · SURVEYING  
 RESOURCE PLANNING**

Sheet 1 of 1

