



DRAWING NUMBER  
Wildflower Ridge #3-B  
Sheet 2 of 2  
PLAN HOLD CORPORATION • IRVINE, CALIFORNIA  
REGISTERED PROFESSIONAL LAND SURVEYOR

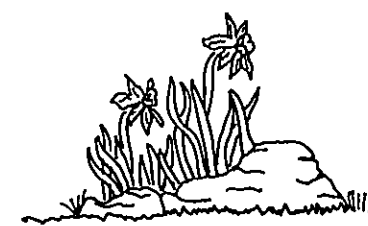
DRAWING NUMBER  
PLAN HOLD CORPORATION • IRVINE, CALIFORNIA  
REGISTERED PROFESSIONAL LAND SURVEYOR

DRAWING NUMBER  
PLAN HOLD CORPORATION • IRVINE, CALIFORNIA  
REGISTERED PROFESSIONAL LAND SURVEYOR

DRAWING NUMBER  
PLAN HOLD CORPORATION • IRVINE, CALIFORNIA  
REGISTERED PROFESSIONAL LAND SURVEYOR

NOTE :

- DOUGLAS COUNTY DOES NOT INSURE THE DEVELOPMENT OF ANY LOT DUE TO RESTRICTIONS CREATED BY SUBSEQUENTLY PLACED WELLS AND SEPTIC SYSTEMS.
- IT IS THE EXPRESSED RESPONSIBILITY OF THE PROPERTY OWNER TO INSURE ACCURATE PLACEMENT AND LOCATION OF WELLS AND SEPTIC SYSTEMS ON EACH INDIVIDUAL PARCEL DESIGNATED ON THIS MAP. NEVADA STATE LAW REQUIRES THAT A ONE HUNDRED FOOT MINIMUM SEPARATION (ONE HUNDRED FIFTY FOOT MINIMUM SEPARATION, DEPENDENT ON THE TYPE OF SYSTEM), BE MAINTAINED BETWEEN THE WELL AND SEPTIC SYSTEMS.



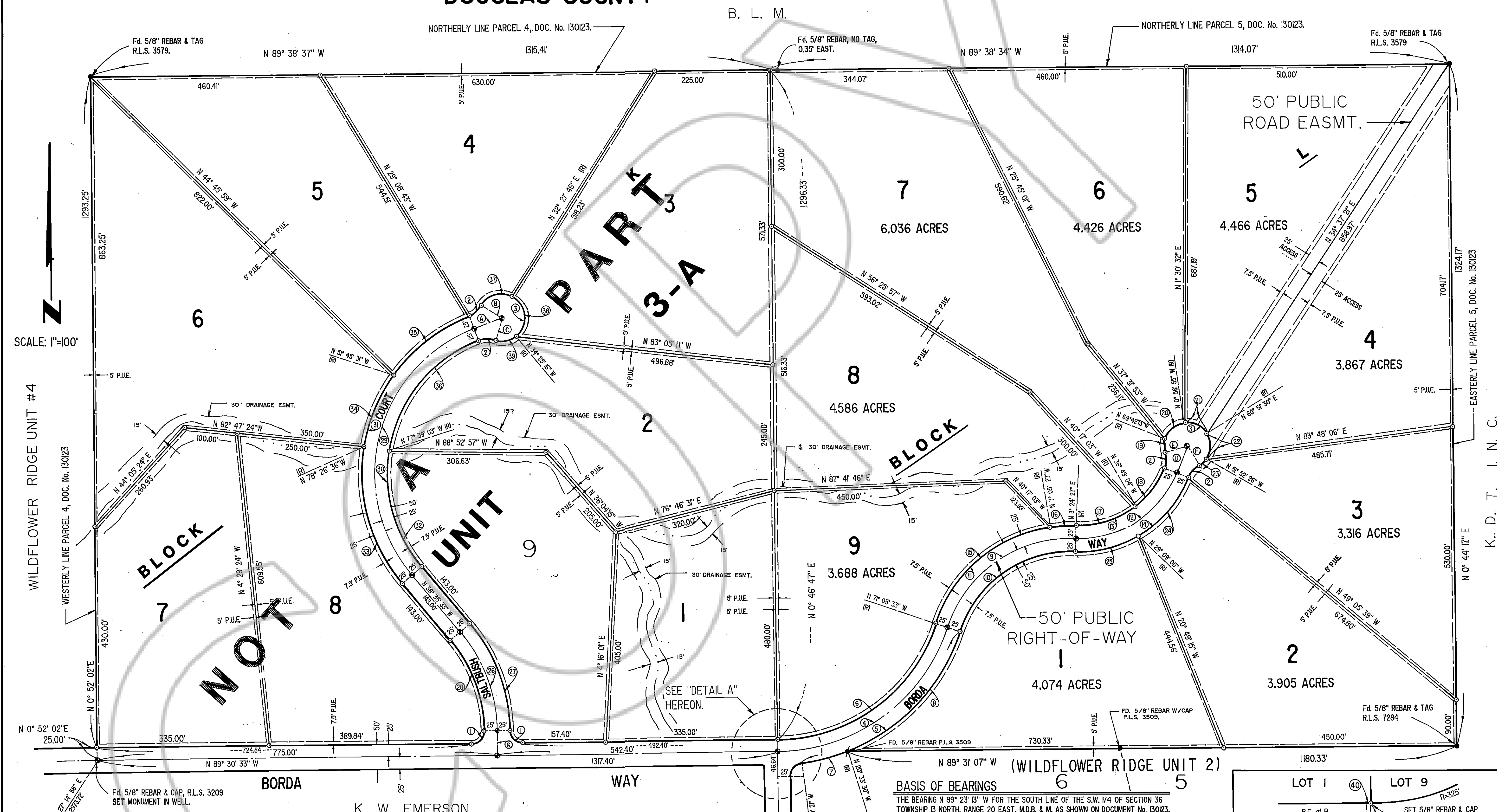
# WILDFLOWER RIDGE UNIT 3-B

BEING A SUBDIVISION IN THE NORTH 1/2 OF SECTION 36,  
TOWNSHIP 13 NORTH, RANGE 20 EAST, M.D.B. & M.

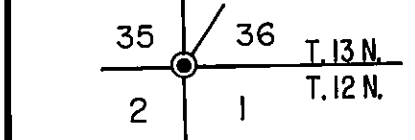
ALSO BEING A SUBDIVISION OF PARCELS 4 & 5 OF DOCUMENT  
NUMBER 130123.

DOUGLAS COUNTY

NEVADA



SCALE: 1"=100'

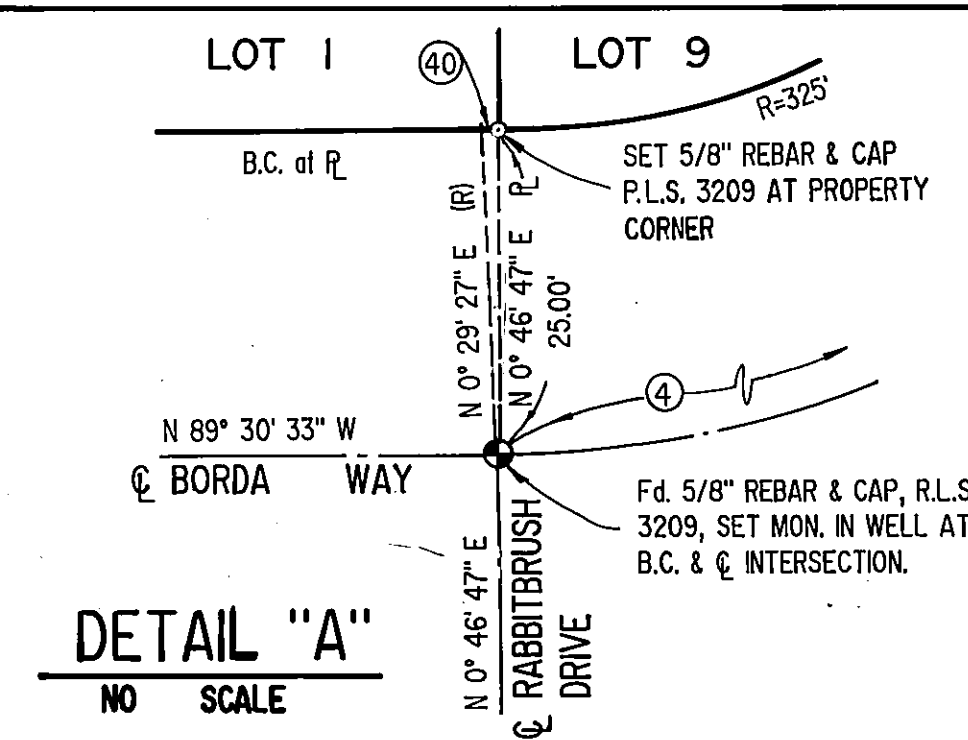


No.	BEARING	DISTANCE
A	N 70°29'27" E	58.31'
B	N 57°22'22" W (R)	45.00'
C	N 18°21'16" E (R)	45.00'
D	N 21°54'27" E	58.31'
E	N 74°02'38" E (R)	45.00'
F	N 30°13'44" W (R)	45.00'
G	N 0°29'27" E	50.00'

CURVE DATA											
No.	Δ	R	T	Ch.	No.	Δ	R	T	Ch.		
1	90°00'00"	25'	39.27'	25.00'	35.36'	18	31°22'29"	175'	95.83'	49.15'	94.64'
2	37°51'49"	50'	33.04'	17.15'	32.44'	19	38°15'09"	45'	28.47'	14.73'	28.00'
3	255°43'38"	45'	200.85'			20	68°45'19"	45'	54.00'	30.79'	58.92'
4	71°35'00"	350'	437.28'	252.35'	409.39'	21	61°48'25"	45'	48.54'	26.94'	46.22'
5	64°26'12"	375'	421.74'	236.32'	399.86'	22	67°16'04"	45'	52.83'	29.94'	49.85'
6	71°33'40"	325'	405.92'	234.23'	380.04'	23	21°38'42"	45'	17.00'	8.60'	16.90'
7	13°54'09"	375'	90.99'	45.72'	90.77'	24	38°56'33"	225'	152.93'	79.55'	150.00'
8	50°32'03"	375'	330.74'	177.00'	320.13'	25	32°33'27"	225'	127.85'	65.70'	126.14'
9	74°30'00"	250'	323.07'	180.10'	302.65'	26	38°15'09"	300'	205.51'	106.87'	201.52'
10	74°30'00"	225'	292.56'	171.09'	272.38'	27	39°15'00"	325'	222.64'	115.89'	218.31'
11	74°30'00"	275'	357.57'	209.11'	332.91'	28	39°15'00"	275'	188.39'	98.06'	184.72'
12	71°30'00"	200'	249.58'	143.98'	233.70'	29	109°15'00"	300'	572.03'	422.53'	489.23'
13	71°30'00"	175'	218.38'	125.98'	204.49'	30	109°15'00"	275'	524.36'	387.32'	449.46'
14	71°30'00"	225'	280.78'	161.98'	262.91'	31	109°15'00"	325'	619.70'	457.74'	530.09'
15	64°00'06"	275'	305.18'	171.84'	291.46'	32	51°06'30"	275'	245.30'	131.49'	237.25'
16	104°29'04"	275'	50.32'	25.25'	50.25'	33	50°18'57"	325'	285.41'	152.64'	276.32'
17	40°07'31"	175'	122.56'	63.31'	120.07'	34	26°41'05"	325'	151.36'	77.08'	150.00'

BASIS OF BEARINGS  
THE BEARING N 89°23'13" W FOR THE SOUTH LINE OF THE S.W. 1/4 OF SECTION 36 TOWNSHIP 13 NORTH, RANGE 20 EAST, M.D.B. & M. AS SHOWN ON DOCUMENT No. 130123, RECORDS OF DOUGLAS COUNTY, WAS USED AS THE BASIS OF BEARINGS ON THIS MAP.

- NOTES:
- FOUND AS SHOWN
  - SET 5/8" DIA. REBAR & PLASTIC CAP, "P.L.S. 3209".
  - SET MON. IN WELL WITH TRAFFIC COVER MARKED "SURVEY".
  - PUBLIC UTILITY EASEMENTS.
  - THE TOTAL AREA BEING SUBDIVIDED BY THIS MAP IS 39.90 ACRES.
  - PUBLIC UTILITY EASEMENTS ARE 5' ALONG INTERIOR AND REAR LOT LINES AND 7.5' ADJACENT TO STREETS, UNLESS OTHERWISE STATED.



SHEET 2 OF 2 SHEETS

DOCUMENT #252108