

COUNTY TAX COLLECTOR'S CERTIFICATE

I, BARBARA J REED, DOUGLAS COUNTY CLERK-TREASURER AND EX-OFFICIO TAX COLLECTOR, DO HEREBY CERTIFY THAT ALL PROPERTY TAXES ON THIS LAND FOR THE FISCAL YEAR HAVE BEEN PAID. *ANN 29-030-03*

Barbara J Reed 4/21/85
 BARBARA J REED
 DOUGLAS COUNTY CLERK-TREASURER
By [Signature] Deputy

OWNERS CERTIFICATE

I, ARNOLD SETTELMAYER, PRESIDENT OF SETTELMAYER RANCHES INC., DO CERTIFY THAT I AM THE LEGAL OWNER OF THIS PARCEL, & DO HEREBY GRANT EASEMENTS FOR DRAINAGE AND PRIVATE ROAD ACCESS AS DESIGNATED ON THIS MAP.

Arnold Settelmeyer
 ARNOLD SETTELMAYER — PRESIDENT
 SETTELMAYER RANCHES INC.

STATE OF NEVADA } ss
 COUNTY OF DOUGLAS }
 ON THE 13 DAY OF September, 1985, PERSONALLY APPEARED BEFORE ME, A NOTARY PUBLIC, ARNOLD SETTELMAYER, KNOWN BY ME TO BE THE PRESIDENT OF SETTELMAYER RANCHES INC., WHO ACKNOWLEDGED THAT HE EXECUTED THE ABOVE INSTRUMENT ON BEHALF OF SAID SETTELMAYER RANCHES INC.

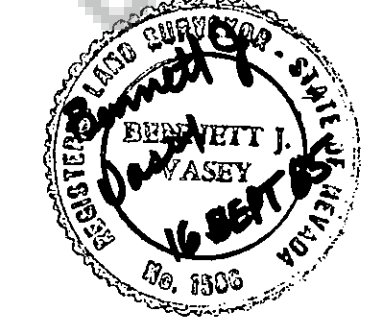
Gloria K. Lash
 GLORIA K. LASH
 NOTARY PUBLIC



SURVEYOR'S CERTIFICATE

I, B.J. VASEY, A REGISTERED LAND SURVEYOR IN THE STATE OF NEVADA, CERTIFY: 1. THIS MAP WAS PREPARED FROM DEEDS, RECORD INFORMATION ON FILE AT THE DOUGLAS COUNTY RECORDER, AT THE INSTANCE OF SETTELMAYER RANCHES INC. 2. THE LAND SHOWN LIES WITHIN A PORTION OF SECTIONS 14, 23, 24 T12N R20E. AND THE SURVEY WAS COMPLETED ON SEPTEMBER 4th, 1985. 3. THIS MAP COMPLIES WITH THE APPLICABLE STATE STATUES AND ANY LOCAL ORDINANCES.

B.J. Vasey
 B.J. VASEY R.L.S. 1984



WATER ENGINEER'S CERTIFICATE

I, RICH DREW, DOUGLAS COUNTY WATER ENGINEER, CERTIFY THAT THIS MAP IS IN COMPLIANCE WITH DOUGLAS COUNTY ORDINANCE 16.32.085.

Rich Drew 4/19/85
 RICH DREW DATE
 DOUGLAS COUNTY WATER ENGINEER

COUNTY CLERKS CERTIFICATE

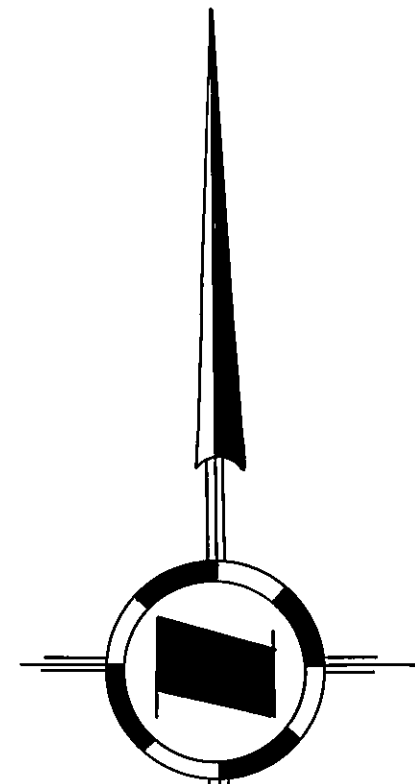
I, BARBARA REED, DOUGLAS COUNTY CLERK, DO HEREBY CERTIFY THAT THIS MAP WAS APPROVED BY THE DOUGLAS COUNTY BOARD OF COMMISSIONERS ON 21st DAY OF November, 1985.

Barbara Reed
 BARBARA REED
 DOUGLAS COUNTY CLERK

RECORDER'S CERTIFICATE

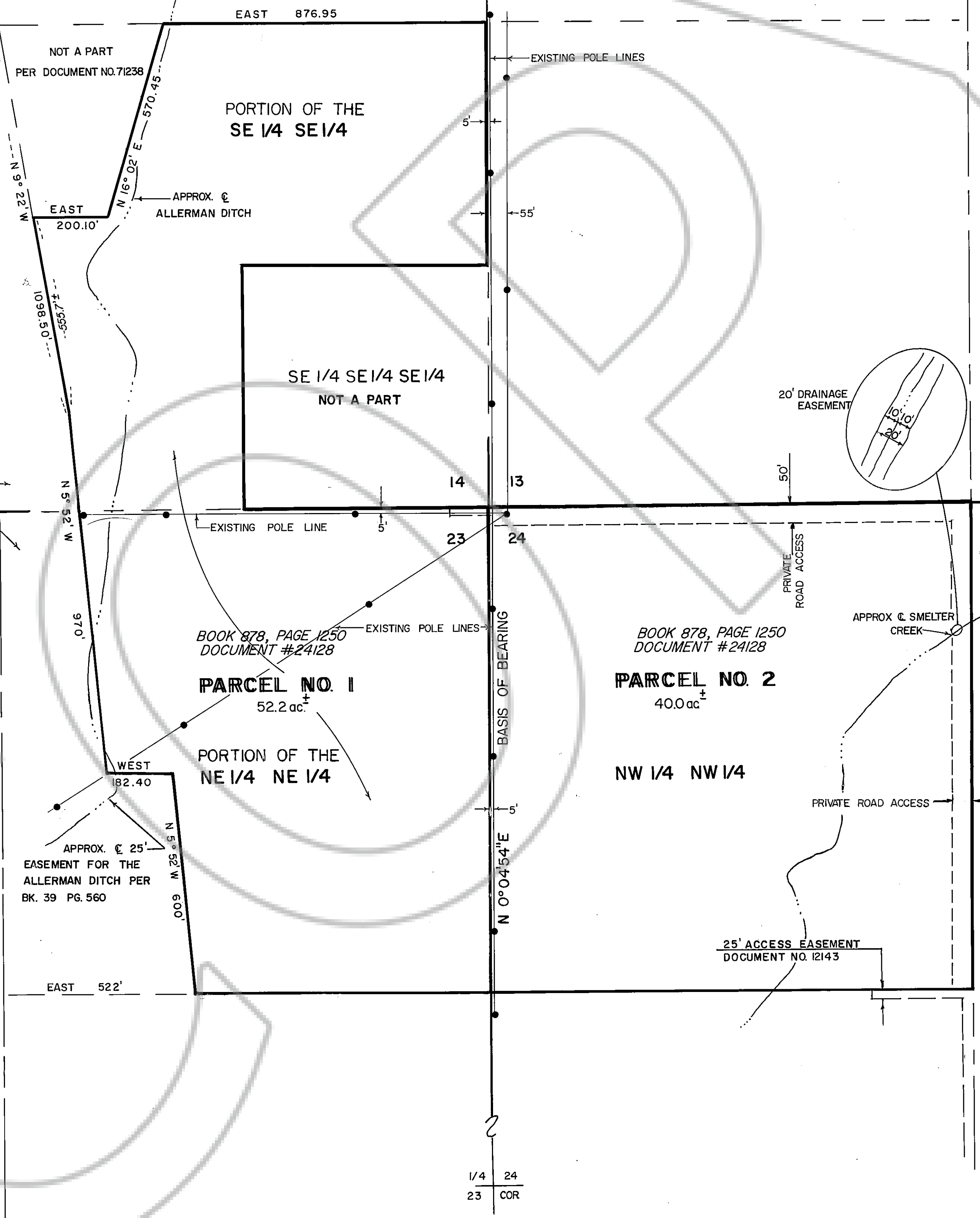
FILED FOR RECORD THIS 21st DAY OF April, 1985 AT 02 MINUTES PAST 4 O'CLOCK P.M. IN BOOK 493, OF OFFICIAL RECORDS, PAGE 4062, DOCUMENT # 305248 RECORDED AT THE REQUEST OF ARNOLD SETTELMAYER.

Linda Slater
 DOUGLAS COUNTY RECORDER



NOTES

BASIS OF BEARING: N 0° 04' 54" E
 THE WEST ONE-QUARTER SECTION LINE OF THE NORTHWEST ONE-QUARTER OF SECTION 14, T12N, R20E, MDB&M PER THE RECORD OF SURVEY FOR WASHOE TRIBE OF NEVADA & CALIFORNIA SHOWN IN BOOK 673 - PAGE 270 AS DOCUMENT #66702.
 TOTAL SITE: 92.2± ac.
 ACERAGE: BASED UPON THE TOWNSHIP PLAT APPROVED ON JUNE 28th, 1862 BY THE SURVEYOR GENERAL'S OFFICE



VASEY ENGINEERING CO., INC.
 Post Office Box 1164 • Minden, Nevada 89423
 702/782-2382 • 782-5642 • 882-5417
 Date SEPT 85 Drawn By MB.
 Job No. M-731 Approved By B.J.V.

DIVISION OF LAND INTO LARGE PARCELS
 FOR
SETTELMAYER RANCHES, INC.
 LOCATED IN PORTIONS OF
 SECTIONS 14, 23, 24 T12N R20E.
 M.D.B.&M.
 DOUGLAS COUNTY, NEVADA