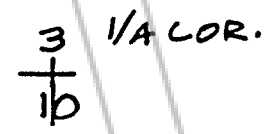
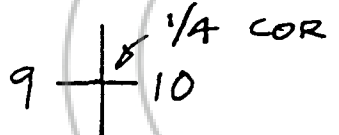
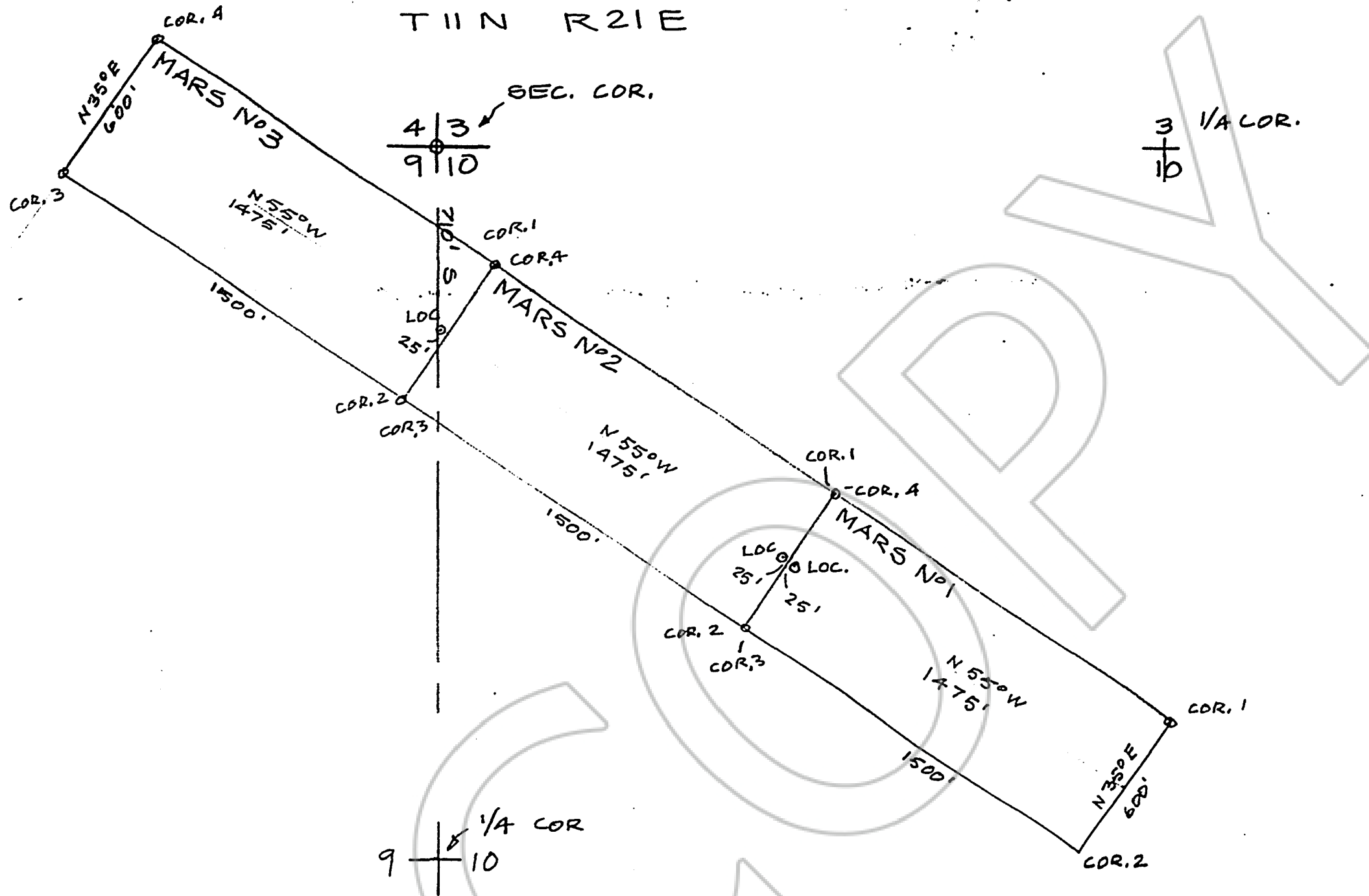
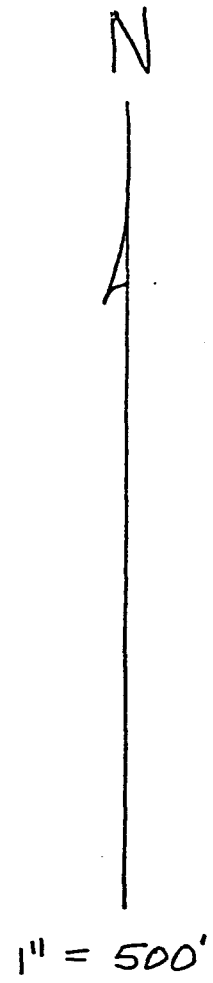


T11N R21E



LOCATION MAP - MARS No 1, 2, 3 LODE CLAIMS  
 LOCATED JULY 25, 1994  
 PARKER MINING CORPORATION  
 10000 PARKWAY, SUITE 100, SAN FRANCISCO, CA 94107



OFFICIAL RECORDS OF  
 DOUGLAS COUNTY, NEVADA  
 Sidney Alderman  
 '94 AUG 10 AM 10:57

SUZANNE BEAUREGARD, RECORDER  
 BY: RJ 459

343722  
 BK 0894 PG 1702