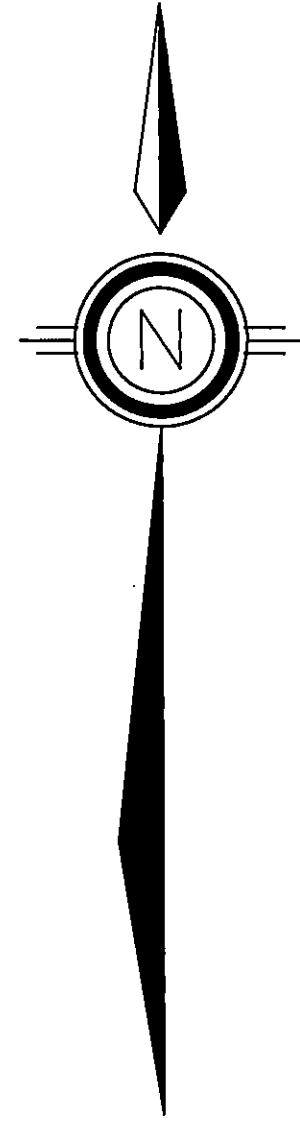


NORTHWEST 1/4, SECTION 29, T.10N., R.22E., M.D.B.&M.

SCALE: 1" = 200'



THIS MAP REPRESENTS A SURVEY OF (D1) & (D2).

LEGEND

- SET 5/8" REBAR WITH CAP MARKED PLS 9393
- ✕ FOUND GLO BRASS CAP QUARTER CORNER OR AS NOTED
- ✕ FOUND GLO BRASS CAP SECTION CORNER
- (R1) RECORD INFORMATION PER RECORD OF SURVEY MAP RECORDED AS FILE #196344 IN BOOK 289 AT PAGE 1596.
- (R2) RECORD INFORMATION PER TOPAZ - SUNRISE ESTATES MAP RECORDED AS DOC. #39898.
- (R3) RECORD INFORMATION PER PARCEL MAP RECORDED AS DOC. #70805 IN BOOK 982 AT PAGE 335.
- (R4) RECORD INFORMATION PER RECORD OF SURVEY MAP RECORDED AS DOC. #213119 IN BOOK 1089 AT PAGE 1974.
- (R5) RECORD INFORMATION PER PARCEL MAP RECORDED AS DOC. #213715 IN BOOK 1089 AT PAGE 3300.
- (R6) RECORD INFORMATION PER PARCEL MAP RECORDED AS DOC. #61372 IN BOOK 1081 AT PAGE 1120.
- (R7) RECORD INFORMATION PER RECORD OF SURVEY MAP RECORDED AS DOC. #36528.
- (D1) RECORD INFORMATION PER DEED RECORDED AS DOC. #331719 IN BOOK 394 AT PAGE 1172.
- (D2) RECORD INFORMATION PER DEED RECORDED AS DOC. #71573 IN BOOK 274 AT PAGE 165.
- (M) MEASURED

BASIS OF BEARINGS

THE BASIS OF BEARINGS OF THIS MAP IS THE WEST LINE OF THE NORTHWEST QUARTER OF SECTION 29, T.10N., R.22E., M.D.B.&M.. SAID LINE BEARS N01°4'E AS PER (R7).

SURVEYOR'S CERTIFICATE

I, DAVID A. OWENS, A PROFESSIONAL LAND SURVEYOR IN THE STATE OF NEVADA, CERTIFY THAT:

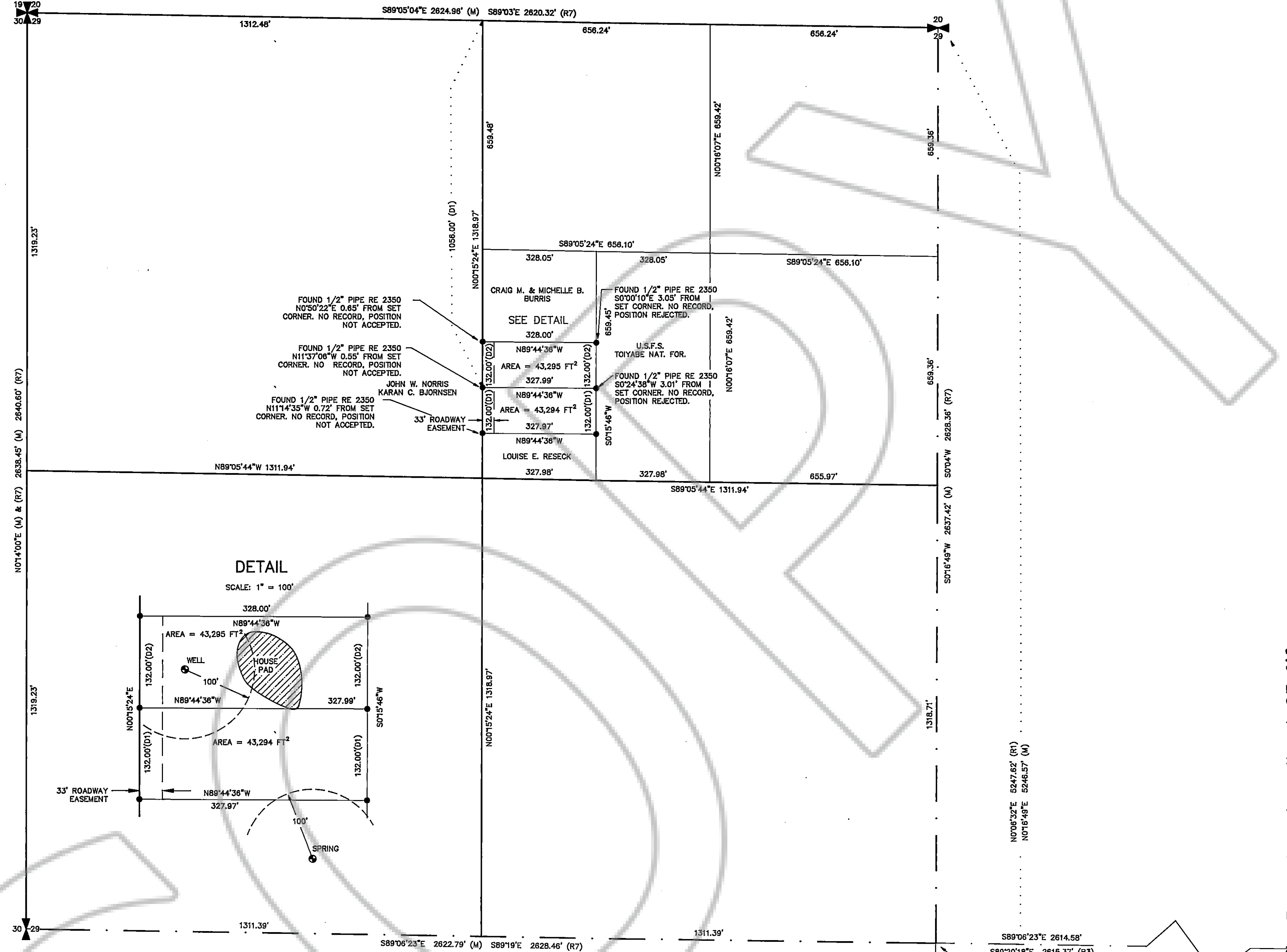
- THIS PLAT REPRESENTS THE RESULTS OF A SURVEY CONDUCTED UNDER MY DIRECT SUPERVISION AT THE INSTANCE OF ESTEL & BARBARA BACK.
- THE LANDS SURVEYED LIE WITHIN SECTION 29, TOWNSHIP 10, NORTH, RANGE 22, EAST, M.D.B.&M. AND THE SURVEY WAS COMPLETED ON AUGUST 8, 1994.
- THIS PLAT COMPLIES WITH THE APPLICABLE STATE STATUTES AND ANY LOCAL ORDINANCES IN EFFECT ON THE DATE THAT THE GOVERNING BODY GAVE IT'S FINAL APPROVAL.
- THE MONUMENTS DEPICTED ON THE PLAT ARE OF THE CHARACTER SHOWN, OCCUPY THE POSITIONS INDICATED AND ARE OF SUFFICIENT NUMBER AND DURABILITY.

David A. Owens 11 August
DAVID A. OWENS, PLS 9393 DATE

RECORDER'S CERTIFICATE

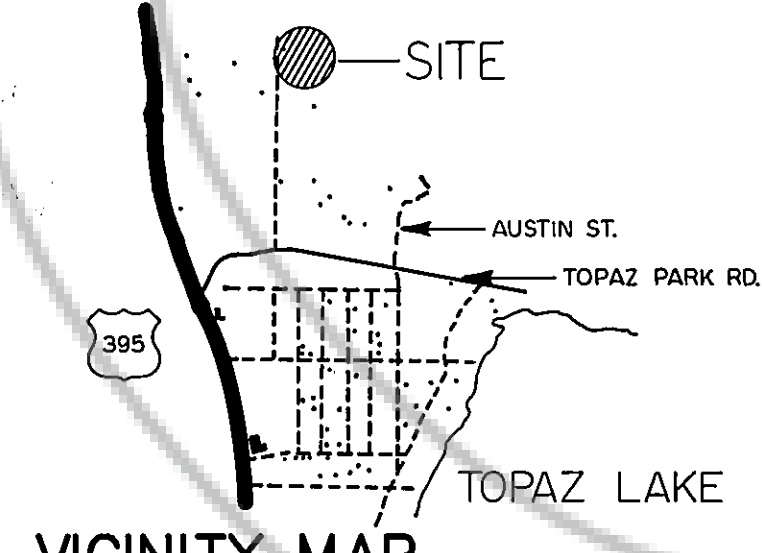
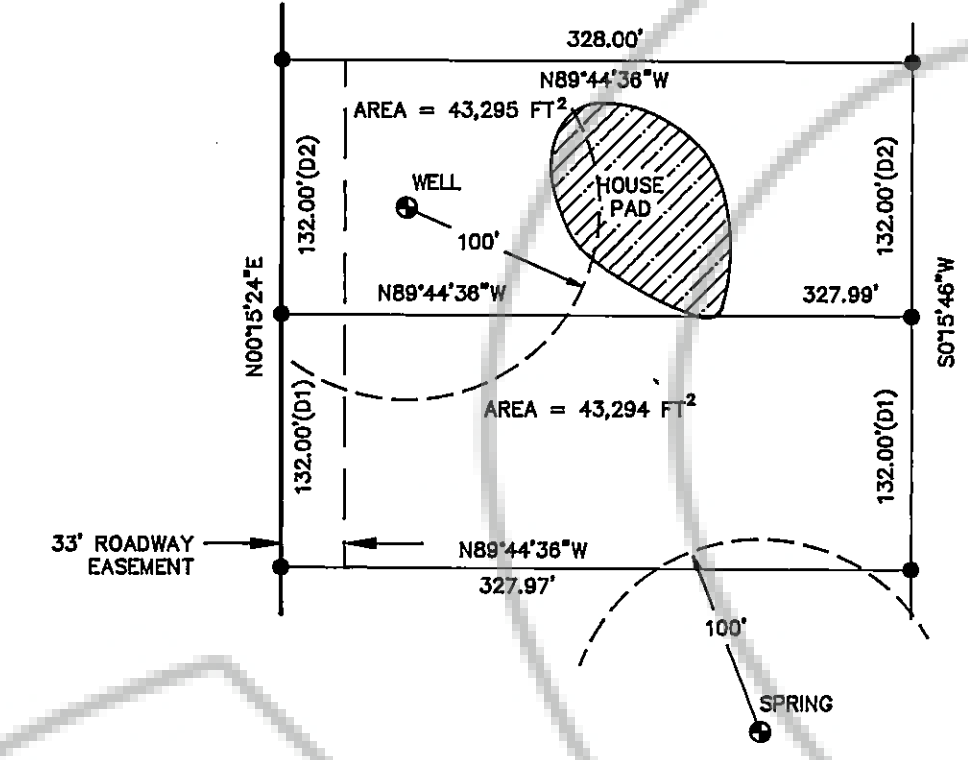
FILED FOR RECORD THIS 11th DAY OF August 1994 AT 37 MINUTES PAST 12 O'CLOCK P.M. IN BOOK 879 OF OFFICIAL RECORDS PAGE 1982 DOCUMENT NUMBER 343820 RECORDED AT THE REQUEST OF WYATT J. OWENS.

Kathy Le Jordan Deputy
DOUGLAS COUNTY RECORDER



DETAIL

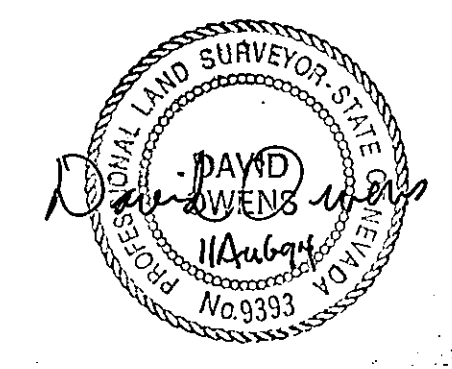
SCALE: 1" = 100'



NOTE: THE JUNIOR - SENIOR RIGHTS OF ALL FOUR PARCELS WHICH WERE CREATED FROM THE PATENT OF THE W1/2SW1/4NE1/4NW1/4 OF SECTION 29 BY JERRY & WINONA MANN RECORDED IN BOOK 16 AT PAGE 534 AS DOCUMENT #22150 IN MARCH, 1983 WERE RETRACED. APN 39-070-09 HAS SENIOR RIGHTS FOLLOWED BY -08, -10 THEN -07. THUS -08 & 09 GET THE FULL WIDTH IN THE NORTH - SOUTH DIRECTION CALLED FOR ON (D1) & (D2), AND THE ENTIRE WIDTH OF THE ALQUOT 1/4 ACRE PARCEL IN THE EAST - WEST DIRECTION.

THE DEED CALLS OF "BEGINNING AT A POINT WHICH IS 1320.00 FEET EAST AND 1056.00 FEET SOUTH OF THE SECTION CORNER COMMON TO SECTIONS 19, 20, 30 & 29" (FROM D1) AND THE SIMILAR CALL ON (D2) ARE ASSUMED TO MEAN ALONG THE CORRESPONDING ALQUOT SECTIONAL LINES (THE NORTH LINE OF THE NW 1/4 AND THE EAST LINE OF THE NW 1/4 OF THE NW 1/4). THE INTENT OF THE PARTIES TO THE DEEDS WAS TO SELL LAND WITHIN THE PATENTED LAND, AND A GEOMETRICALLY PERFECT SECTION WAS ASSUMED. HOWEVER, THESE CALLS YIELD TO THE INTENTIONS OF THE PARTIES TO THE DEEDS.

MR. BOB DOWNER WAS CONSULTED REGARDING THE DOCUMENTATION OF THE FOUND 1/2" PIPES SHOWN ON THIS MAP. HE WAS UNABLE TO PRODUCE MAPS OR CALCULATIONS SHOWING HOW THE PIPES WERE SET, THEREFORE THE PIPE POSITIONS WERE REJECTED, SINCE THEY WERE UNCALLED FOR MONUMENTS WITH NO SUPPORTING DOCUMENTATION.



RECORD OF SURVEY
FOR
ESTEL & BARBARA BACK & KATHLEEN T. PRICE
WITHIN THE W 1/2 SW 1/4 NE 1/4 NW 1/4,
SECTION 29, T. 10N., R.22E., M.D.B.&M.
DOUGLAS COUNTY, NEVADA