

DRAWING NUMBER  
Silver Ranch Unit # 2A  
Page 1 of 3  
PLAN HOLD CORPORATION • IRVINE, CALIFORNIA  
RECORDED BY NUMBER OTHER  
FURNISH LIST OF PLANS TO BE FILED

DRAWING NUMBER  
PLAN HOLD CORPORATION • IRVINE, CALIFORNIA  
RECORDED BY NUMBER OTHER  
FURNISH LIST OF PLANS TO BE FILED

DRAWING NUMBER  
PLAN HOLD CORPORATION • IRVINE, CALIFORNIA  
RECORDED BY NUMBER OTHER  
FURNISH LIST OF PLANS TO BE FILED

DRAWING NUMBER  
PLAN HOLD CORPORATION • IRVINE, CALIFORNIA  
RECORDED BY NUMBER OTHER  
FURNISH LIST OF PLANS TO BE FILED

# FINAL MAP SILVER RANCH UNIT 2-A

A PORTION OF SECTIONS 8 AND 9, T.12N., R20E. M.D.B.&M.  
DOUGLAS COUNTY, NEVADA

### OWNER'S CERTIFICATE

KNOW ALL MEN BY THESE PRESENTS, THAT THE UNDERSIGNED, SIERRA NEVADA LANDCO, A NEVADA CORPORATION, OWNER OF RECORD TITLE INTEREST, DOES HEREBY CONSENT TO THE PREPARATION AND RECORDING OF THIS MAP IN ACCORDANCE WITH AND FOR THE USES AND PURPOSES SET FORTH IN THE NEVADA REVISED STATUTES, CHAPTERS 116 AND 278 AND SUBSEQUENT AMENDMENTS THERETO, AND DOUGLAS COUNTY CODE 16, AND DOES HEREBY OFFER AND CONVEY FOR DEDICATION TO THE COUNTY OF DOUGLAS, STATE OF NEVADA, FOR THE USE OF THE PUBLIC THOSE PORTIONS OF SAID LANDS DESIGNATED ON THIS MAP AS SILVER RANCH DRIVE AND DOES HEREBY OFFER AND DEDICATE FOR PARTICULAR PURPOSES THE RIGHTS OF WAY AND EASEMENTS AS SHOWN FOR GAS, WATER, SEWER, AND DRAINAGE FACILITIES; FOR POLES, ANCHORS AND GUYS FOR CONDUCTOR WIRE, AND CONDUIT FOR ELECTRICAL, TELEVISION AND TELEPHONE SERVICE; TOGETHER WITH ANY AND ALL APPURTENANCES THERETO, ON, ACROSS, AND UNDER ALL LAND LYING OUTSIDE THE INDIVIDUAL SITES SHOWN HEREON.

*Richard L. Cable*  
SIERRA NEVADA LANDCO INC, A NEVADA CORPORATION  
RICHARD L. CABLE, PRESIDENT

STATE OF NEVADA SS  
COUNTY OF DOUGLAS



ON THE 10<sup>th</sup> DAY OF June, 1994, PERSONALLY APPEARED BEFORE ME, A NOTARY PUBLIC, RICHARD L. CABLE, PERSONALLY KNOWN (OR PROVED) TO ME TO BE THE PERSON WHOSE NAME IS SUBSCRIBED TO THE ABOVE INSTRUMENT, WHO ACKNOWLEDGED THAT HE EXECUTED THE ABOVE INSTRUMENT.

*Judy A. Coelich*  
NOTARY PUBLIC

### SURVEYOR'S CERTIFICATE

I, FRED R. NAGEL, A PROFESSIONAL LAND SURVEYOR IN THE STATE OF NEVADA, CERTIFY:

- 1) THIS IS A TRUE AND ACCURATE REPRESENTATION OF THE LANDS SURVEYED UNDER MY SUPERVISION AT THE REQUEST OF RICHARD L. CABLE.
- 2) THE LAND SURVEYED LIES WITHIN PORTIONS OF SECTIONS 8 AND 9, TOWNSHIP 12 NORTH, RANGE 20 EAST, M.D.B.&M, AND THE SURVEY WAS COMPLETED ON JUNE 1, 1994.
- 3) THIS MAP COMPLIES WITH THE APPLICABLE STATE STATUTES AND LOCAL ORDINANCES.
- 4) THE MONUMENTS ARE OF THE CHARACTER SHOWN AND OCCUR AT THE POSITIONS INDICATED.

*Fred R. Nagel*  
FRED R. NAGEL, P.L.S. 3884



### FIRE DEPARTMENT APPROVAL

THE FIREFIGHTING FACILITIES AND ACCESSES SHOWN ON THESE PLANS ARE HEREBY APPROVED BY THE EAST FORK FIRE PROTECTION DISTRICT.

*John Warren Gay*  
JOHN WARREN GAY, DEPUTY FIRE CHIEF  
EAST FORK FIRE PROTECTION DISTRICT

### CHIEF PLANNING OFFICIAL

ACTING  
I, JOHN DOUGHTY, CHIEF PLANNING OFFICIAL, DO HEREBY CERTIFY THAT I HAVE REVIEWED THIS MAP AND THAT IT IS IN SUBSTANTIAL COMPLIANCE WITH THE TENTATIVE MAP AS APPROVED BY THE DOUGLAS COUNTY PLANNING COMMISSION ON THE 30th DAY OF MAY, 1990.

*John Doughty*  
JOHN DOUGHTY, ACTING  
CHIEF PLANNING OFFICIAL  
DATE 8/30/94

### COUNTY ENGINEER'S CERTIFICATE

I, CHRIS M. TSCHIRHART, <sup>REGISTERED</sup> DOUGLAS COUNTY ENGINEER, DO HEREBY CERTIFY THAT I HAVE EXAMINED THIS FINAL MAP ENTITLED SILVER RANCH UNIT 3-A, AND THAT THE REQUIRED IMPROVEMENTS HAVE BEEN SATISFACTORILY COMPLETED.

*Chris M. Tschirhart*  
CHRIS M. TSCHIRHART, P.E.  
ACTING DOUGLAS COUNTY ENGINEER  
DATE 8-30-94

### PLANNING COMMISSION CERTIFICATE

IT IS HEREBY CERTIFIED THAT THIS PLAT WAS PRESENTED BEFORE THE DOUGLAS COUNTY PLANNING COMMISSION ON THE 25<sup>th</sup> DAY OF August, 1994 AND WAS DULY APPROVED. FURTHERMORE, THE OFFER OF DEDICATION FOR ALL PUBLIC WAYS WAS REJECTED WITH THE RESERVATION TO ACCEPT SAID OFFER AT A LATER TIME.

*Joan Patrick*  
JOAN PATRICK, CHAIRMAN  
DOUGLAS COUNTY PLANNING COMMISSION  
DATE 8/24/94

### TAX COLLECTOR'S CERTIFICATE

I, BARBARA J. REED, DOUGLAS COUNTY CLERK-TREASURER AND EX-OFFICIO TAX COLLECTOR, DO HEREBY CERTIFY THAT ALL PROPERTY TAXES ON THIS LAND FOR THE FISCAL YEAR HAVE BEEN PAID. APN 27-140-16  
27-140-15

*Barbara J. Reed*  
BARBARA J. REED  
DOUGLAS COUNTY CLERK-TREASURER  
DATE 8-31-94

### TITLE CERTIFICATE

THIS IS TO CERTIFY THAT THE PARTY AS LISTED WITHIN THE OWNERS CERTIFICATE IS THE ONLY PARTY HAVING RECORD INTEREST IN THE TRACTS OF LAND EMBRACED WITHIN THE GRAPHIC BORDER SHOWN ON THIS PLAT. THE FOLLOWING IS A LIST OF LIENS AND/OR MORTGAGE HOLDERS OF RECORD:

- DEED OF TRUST BOOK 890, PAGE 4831, DOC No. 233501
- DEED OF TRUST BOOK 1293, PAGE 5721, DOC No. 325992

*Janice K. Condon*  
JANICE K. CONDON, SUPERVISOR  
WESTERN TITLE COMPANY, INC.  
DATE 5-12-94

### UTILITY COMPANYS' CERTIFICATE

THE EASEMENTS AS SHOWN ON THIS MAP, UNLESS OTHERWISE INDICATED, ARE UTILITY EASEMENTS TO BE USED FOR THE SPECIFIC PURPOSE OF ELECTRICAL, TELEPHONE AND GAS SERVICE AND ARE HEREBY CHECKED AND APPROVED. THIS APPROVAL DOES NOT GUARANTEE ACCESSIBILITY FOR SERVICE.

*Richard A. ...*  
SIERRA PACIFIC POWER COMPANY  
DATE 6/16/94

*Diana Payne*  
CONTEL OF NEVADA  
DATE 6-10-94

*Chae Wilson*  
SOUTHWEST GAS CORPORATION  
DATE 6-14-94

### HEALTH DEPARTMENT APPROVAL

THIS FINAL MAP IS APPROVED BY THE DIVISION OF HEALTH OF THE DEPARTMENT OF HUMAN RESOURCES CONCERNING SEWAGE DISPOSAL, WATER POLLUTION, WATER QUALITY AND WATER SUPPLY FACILITIES IN ACCORDANCE WITH NEVADA REVISED STATUTES. THIS APPROVAL PREDICATES COMMUNITY WATER SUPPLY AND COMMUNITY SEWAGE DISPOSAL.

*John ...*  
DIVISION OF HEALTH  
DATE June 8, 94

### DIVISION OF WATER RESOURCES APPROVAL

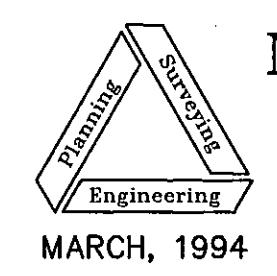
THIS FINAL MAP IS APPROVED BY THE DIVISION OF WATER RESOURCES OF THE DEPARTMENT OF CONSERVATION AND NATURAL RESOURCES CONCERNING WATER QUANTITY SUBJECT TO THE REVIEW OF APPROVAL ON FILE IN THIS OFFICE.

*Joan K. P.E.*  
DIVISION OF WATER RESOURCES  
DATE 6/9/94

### RECORDER'S CERTIFICATE

FILED FOR RECORD THIS 2 DAY OF September, 1994, AT 46 MINUTES PAST 12 O'CLOCK P.M. IN BOOK 994, OF OFFICIAL RECORDS, PAGE 348 DOCUMENT No. 345409 RECORDED AT THE REQUEST OF Sierra Nevada Landco Inc

*James James - Deputy*  
DOUGLAS COUNTY RECORDER



NST Engineering, Inc.  
1495 Riverside Drive  
Susanville, CA 96130  
(916) 257-5173  
MARCH, 1994  
JOB No. 93-27

DRAWING NUMBER  
Silveranch Unit #2A  
Page 2 of 3

PLAN HOLD CORPORATION • IRVINE, CALIFORNIA  
REGISTERED BY NUMBER 070248  
REVISION SIZE OF PRINT ON THIS DATE

DRAWING NUMBER

PLAN HOLD CORPORATION • IRVINE, CALIFORNIA  
REGISTERED BY NUMBER 070248  
REVISION SIZE OF PRINT ON THIS DATE

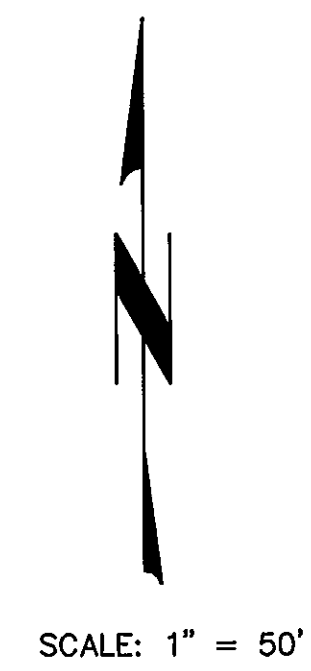
DRAWING NUMBER

PLAN HOLD CORPORATION • IRVINE, CALIFORNIA  
REGISTERED BY NUMBER 070248  
REVISION SIZE OF PRINT ON THIS DATE

DRAWING NUMBER

PLAN HOLD CORPORATION • IRVINE, CALIFORNIA  
REGISTERED BY NUMBER 070248  
REVISION SIZE OF PRINT ON THIS DATE

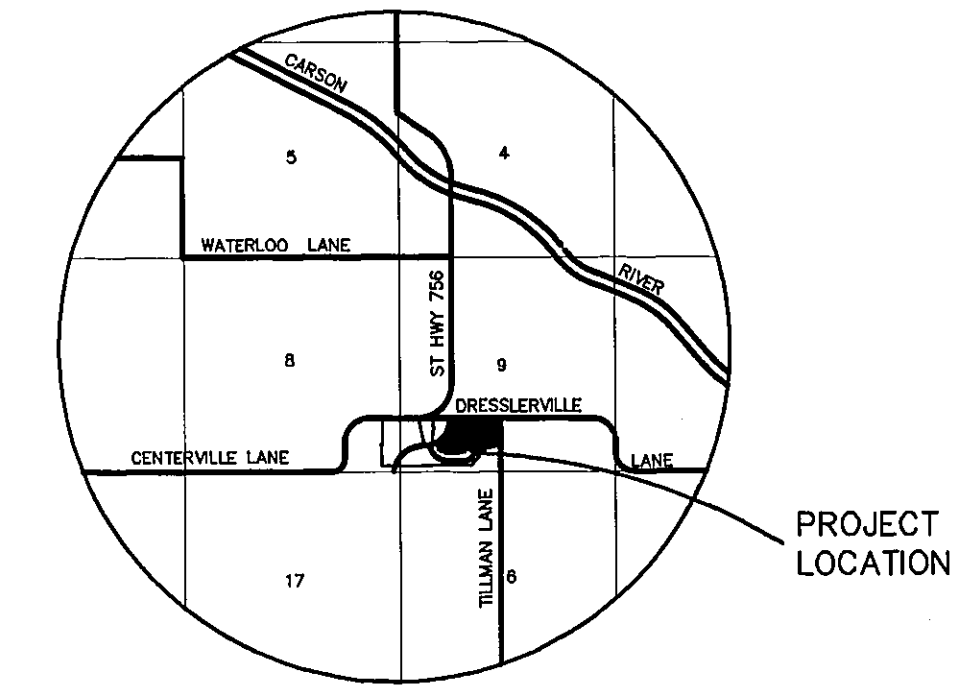
# FINAL MAP SILVERANCH UNIT 2-A



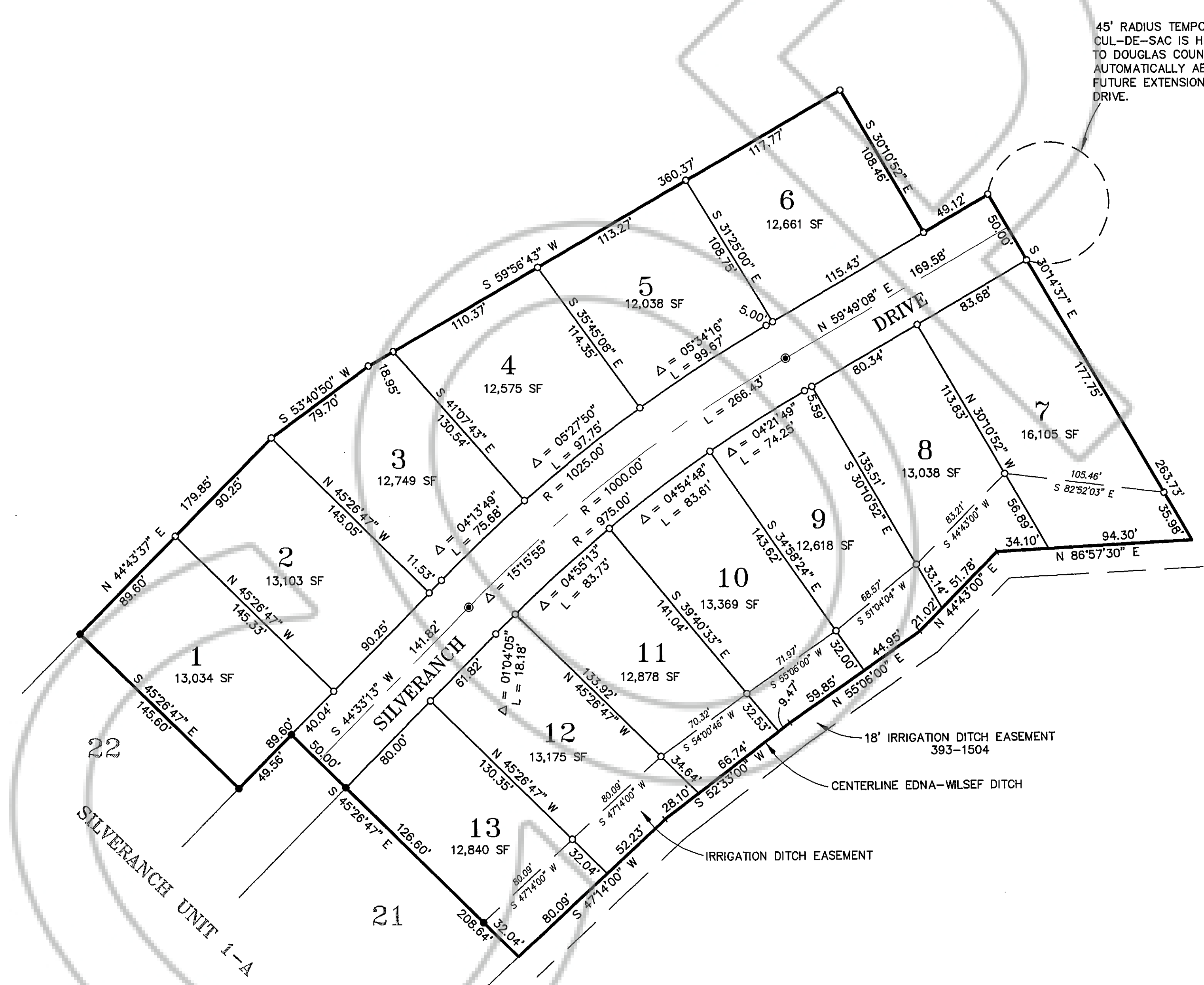
SCALE: 1" = 50'

## BASIS OF BEARINGS

THE BASIS OF BEARINGS FOR THIS PROJECT IS THE NORTHEASTERLY LINE OF LOT 21, AS SAID LINE IS SHOWN IN BOOK 194, OF OFFICIAL RECORDS, AT PAGE 256, AS N 45°26'47" W.



VICINITY MAP



45' RADIUS TEMPORARY CUL-DE-SAC IS HEREBY DEDICATED TO DOUGLAS COUNTY AND TO BE AUTOMATICALLY ABANDONED UPON FUTURE EXTENSION OF SILVERANCH DRIVE.

## NOTES

A 7.5' PUBLIC UTILITY EASEMENT IS HEREBY CREATED ALONG ALL FRONT LOT LINES AND A 5' PUBLIC UTILITY EASEMENT IS HEREBY CREATED ALONG ALL SIDE AND REAR LOT LINES.

THIS MAP IS SUBJECT TO EASEMENTS AS SET FORTH IN THE PRELIMINARY TITLE REPORT PREPARED BY TICOR TITLE INSURANCE COMPANY, ORDER No. B54324JC, DATED MARCH 11, 1993.

TOTAL SITE = 28.49 ACRES  
UNIT 2-A = 4.57 ACRES  
REMAINDER PCL B = 23.92 ACRES  
SILVERANCH DRIVE = 0.66 ACRES

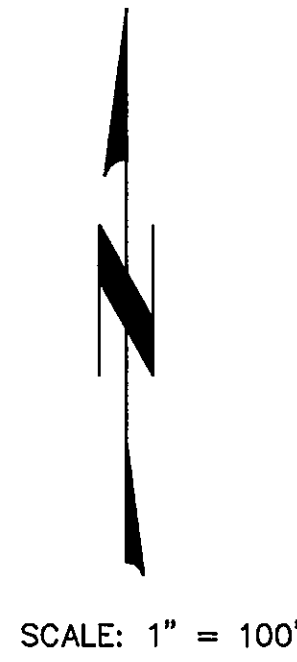
## LEGEND

- FOUND MON. PER 194 OR 256 EXCEPT AS NOTED
- SET 5/8" REBAR W/ CAP STAMPED PLS 3884
- ⊙ SET STANDARD SURVEY MONUMENT IN WELL

**NST Engineering, Inc.**  
1495 Riverside Drive  
Susanville, CA 96130  
(916) 257-5173  
MAY, 1994

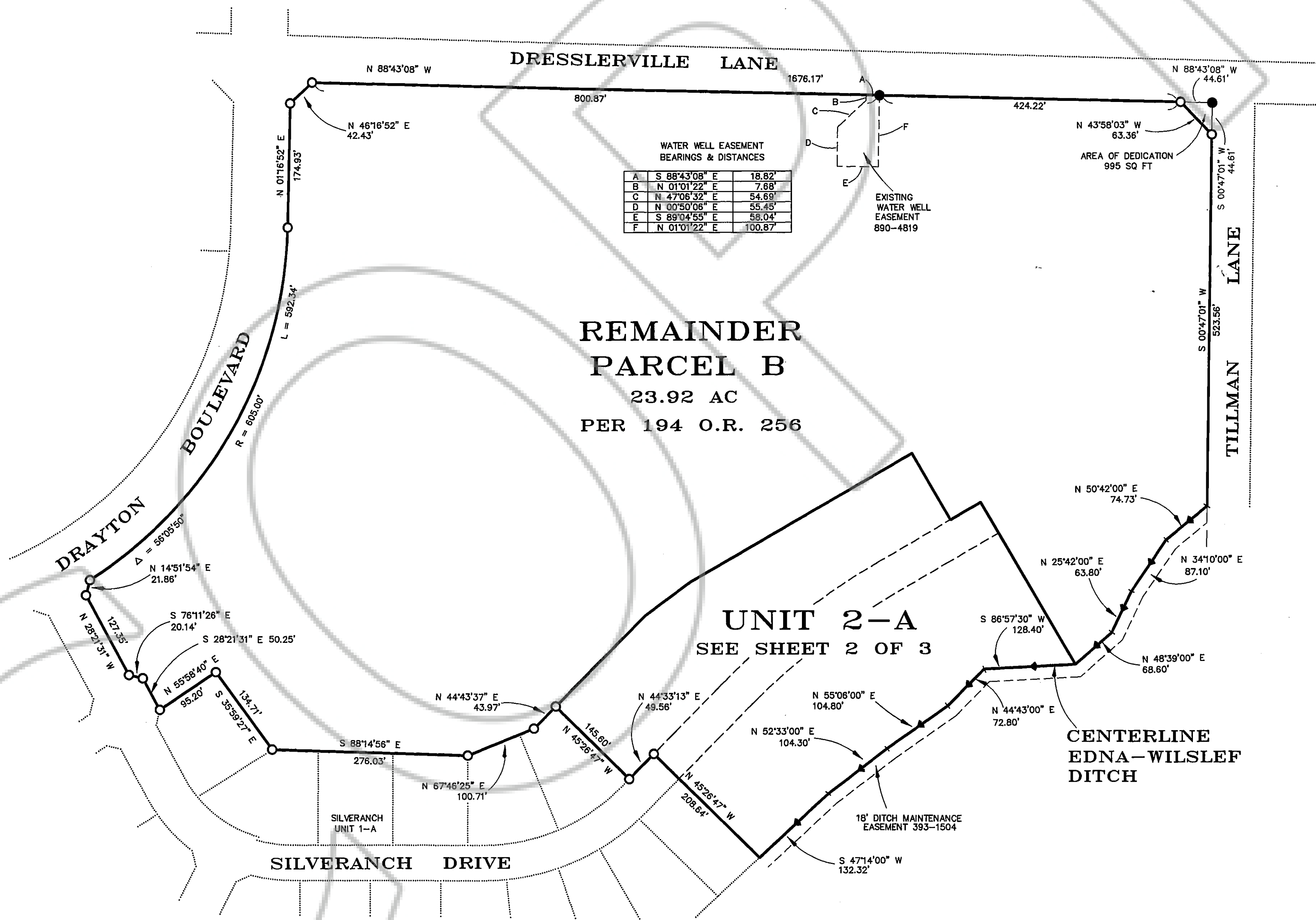
JOB No. 93-27

# FINAL MAP SILVER RANCH UNIT 2-A



WATER WELL EASEMENT  
BEARINGS & DISTANCES

A	S 88°43'08" E	18.82'
B	N 01°01'22" E	7.88'
C	N 47°08'32" E	54.68'
D	N 00°50'08" E	55.45'
E	S 89°04'53" E	59.04'
F	N 01°01'22" E	100.87'

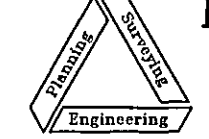


DRAWING NUMBER  
Silver Ranch Unit #2A  
Page 3 of 3  
PLAN HOLD CORPORATION • IRVINE, CALIFORNIA  
REGISTERED PROFESSIONAL ENGINEER

DRAWING NUMBER  
PLAN HOLD CORPORATION • IRVINE, CALIFORNIA  
REGISTERED PROFESSIONAL ENGINEER

DRAWING NUMBER  
PLAN HOLD CORPORATION • IRVINE, CALIFORNIA  
REGISTERED PROFESSIONAL ENGINEER

DRAWING NUMBER  
PLAN HOLD CORPORATION • IRVINE, CALIFORNIA  
REGISTERED PROFESSIONAL ENGINEER


**NST Engineering, Inc.**  
 1495 Riverside Drive  
 Susanville, CA 96150  
 (916) 257-5173

JUNE, 1994 JOB No. 93-27

SHEET 3 OF 3

DOCUMENT #345409