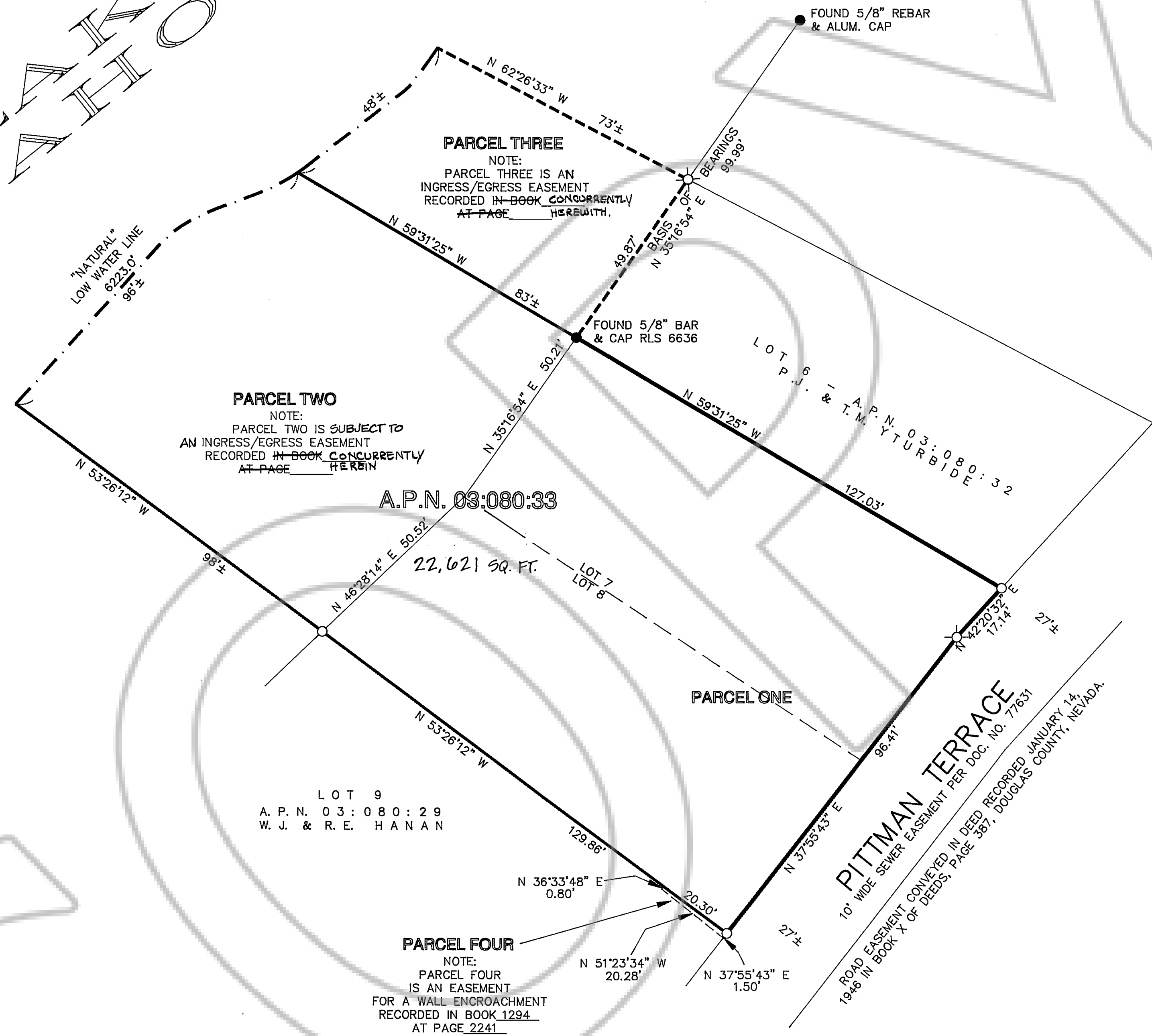
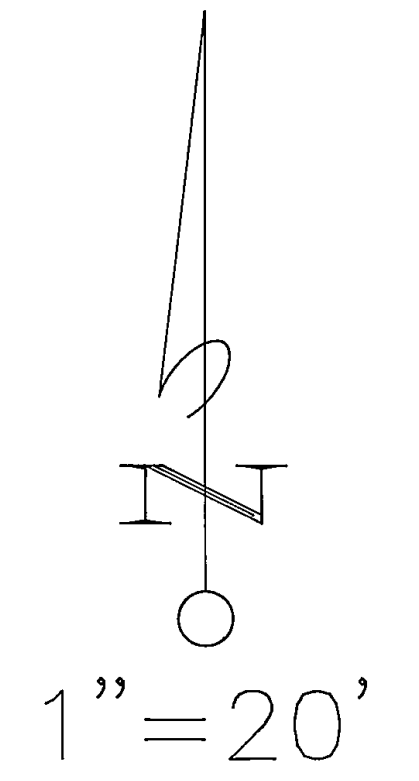


TAHOE



**BASIS OF BEARINGS**  
 THE MERIDIAN OF THIS SURVEY IS IDENTICAL TO THAT RECORD OF SURVEY, FILED FOR RECORD ON AUGUST 28, 1989, IN THE DOUGLAS COUNTY RECORDERS OFFICE AS DOCUMENT No. 209569.

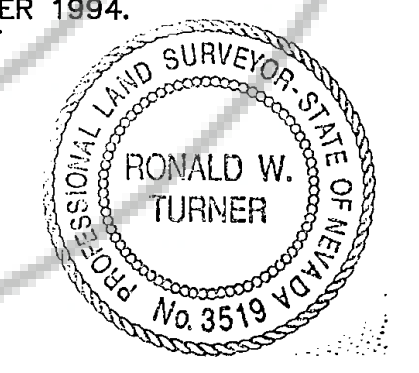
**LEGEND**

- FOUND AS NOTED
- SET 5/8" BAR & WIRED TAG PLS 3519
- ⊗ SET 3/4" IP W/PLUG PLS 3519

**SURVEYOR'S CERTIFICATE**

I, RONALD W. TURNER, A PROFESSIONAL LAND SURVEYOR IN THE STATE OF NEVADA, CERTIFY THAT:  
 1. THIS IS A TRUE AND ACCURATE REPRESENTATION OF THE LANDS SURVEYED UNDER MY SUPERVISION AT THE INSTANCE OF SELVIN PASSEN.  
 2. THE LANDS SURVEYED LIE WITHIN A PORTION OF SECTION 27, T.14N., R.18E., M.D.M., AND THE SURVEY WAS COMPLETED ON 20 OCTOBER 1994.  
 3. THIS PLAT COMPLIES WITH THE APPLICABLE STATE STATUTES AND ANY ANY LOCAL ORDINANCE.  
 4. THE MONUMENTS ARE OF THE CHARACTER SHOWN AND OCCUPY THE POSITIONS INDICATED.

*Ronald W. Turner* 1/4/95  
 RONALD W. TURNER, P.L.S. 3519



**RECORDER'S CERTIFICATE**

FILED FOR RECORD THIS 4 DAY OF January 1995, AT 18 MINUTES PAST 4 O'CLOCK P.M. IN BOOK 192 PAGE 7402, DOCUMENT NO. 353750 IN THE OFFICIAL RECORD OF DOUGLAS COUNTY, NEVADA AT THE REQUEST OF SELVIN PASSEN, MD.

*Amela Kuenenbauer, Deputy*  
 DOUGLAS COUNTY RECORDER

**RECORD OF SURVEY**  
 FOR  
**SELVIN PASSEN**  
 A PORTION OF LOT 2,  
 SEC. 27, T.14N., R.18E., M.D.M.  
 BEING LOTS 7 & 8,  
 SUBDIVISION No. 1, CAVE ROCK COVE LTD. TRACT  
 DOUGLAS COUNTY, NEVADA  
 TURNER & ASSOC. STATELINE, Nv.

DEC., 1994  
 SCALE: 1"=20'  
 JOB No. 94212

PASSEN, SELVIN - DOCUMENT #353750

27-14-18 PASSEN  
 DOC 353750